

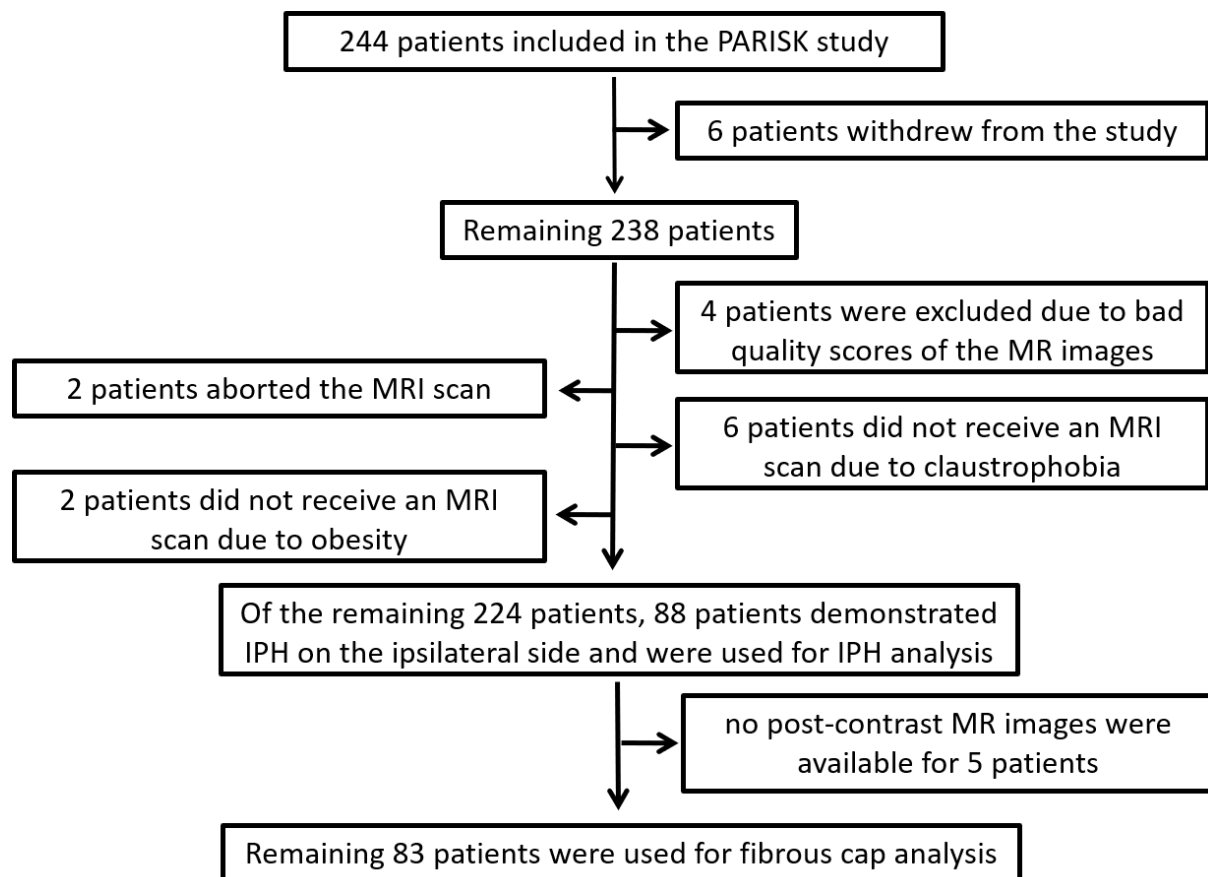
Supplementary Table 1. Clinical characteristics of patients with IPH on MRI

	(n= 88)
Age, mean in years (\pm SD)	71.1 (\pm 7.3)
Sex, male (%)	76 (86)
BMI (kg/m ²) (\pm SD)	26.2 (\pm 3.8)
Degree of stenosis, mean percentage (\pm SD)	22.3 (\pm 17.6)
Range of degree of stenosis, min-max percentage	0 - 64
Hypertension, yes (%)	57 (65)
Hypercholesterolemia, yes (%)	51 (58)
Previous antiplatelet agent use, yes (%) ^a	44 (51)
Previous antihypertensive use, yes (%) ^a	57 (66)
Previous statin use, yes (%) ^a	42 (48)
Diabetes Mellitus, yes (%) ^b	18 (21)
Current smoking, yes (%) ^c	12 (14)
History of ischemic stroke, yes (%)	23 (26)
History of ischemic heart disease, yes (%)	21 (24)
History of peripheral artery disease, yes (%) ^c	11 (13)

Data are presented as absolute number of patients (%), and mean \pm SD. ^a 1-missing data on previous antiplatelet use, previous antihypertensive use and previous statin use, ^b 2-missing data on diabetes

mellitus. ^c 3-missing data about current smoking status and history of peripheral artery disease.

IPH=intraplaque hemorrhage, SD = standard deviation, BMI=Body Mass Index



Supplementary Figure 1. Patient selection flowchart