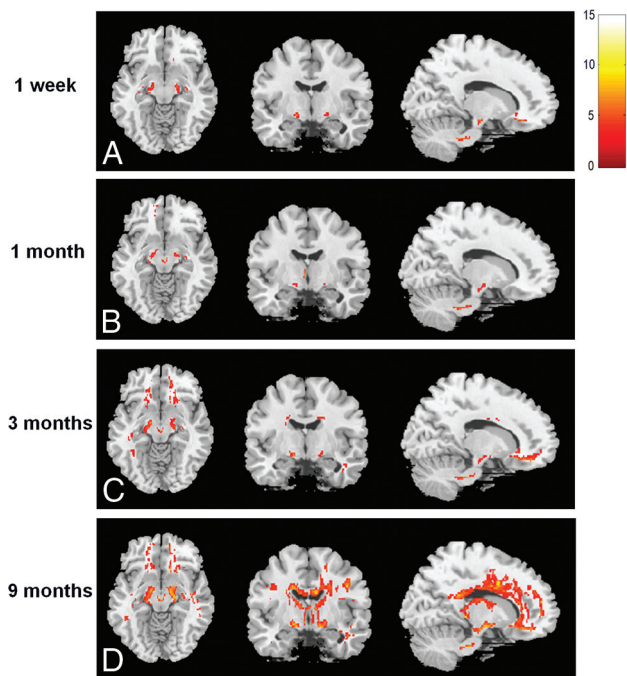
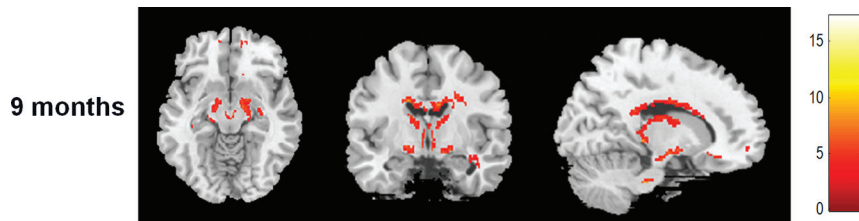


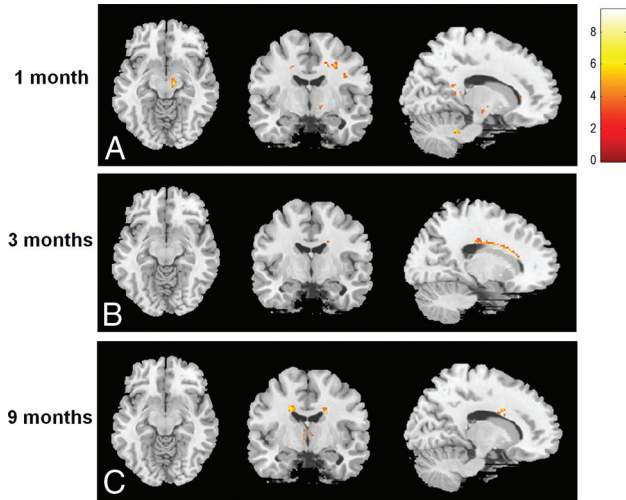
**ON-LINE FIG 1.** The voxelwise comparison of RD values between patients with WMLs and healthy controls. The yellow-to-red areas indicate regions with values that were significantly increased in the patients, and the color bar on the right-hand side indicates *T* values.



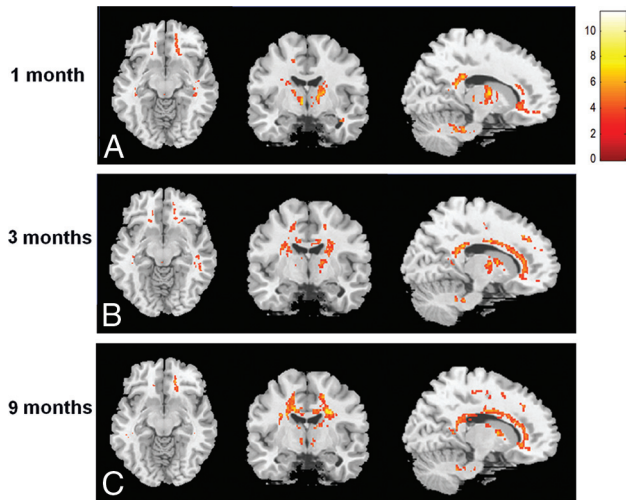
**ON-LINE FIG 2.** The voxelwise comparison of MD values between patients with WMLs and healthy controls. The yellow-to-red areas indicate regions with values that were significantly increased in the patients, and the color bar on the right-hand side indicates *T* values.



**ON-LINE FIG 3.** The voxelwise comparison of AD values between patients with WMLs and healthy controls. The yellow-to-red areas indicate regions with values that were significantly increased in the patients, and the color bar on the right-hand side indicates  $T$  values. No significant difference was noted at 1 week and 1 and 3 months after CO intoxication.

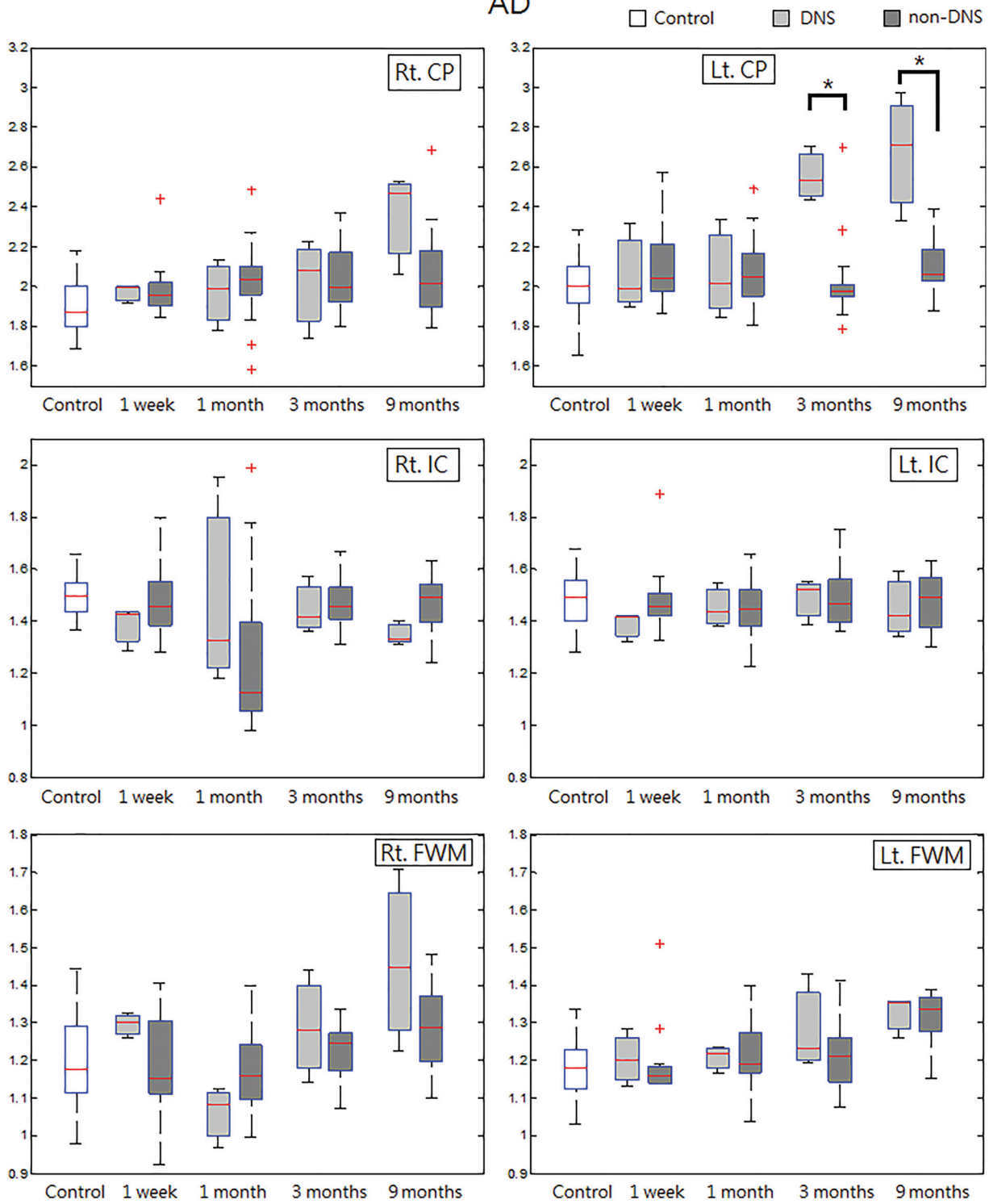


**ON-LINE FIG 4.** The voxelwise comparison of AK values between patients with WMLs and healthy controls. The yellow-to-red areas indicate regions with values that were significantly decreased in the patients, and the color bar on the right-hand side indicates  $T$  values. No significant difference was noted at 1 week after CO intoxication.



**ON-LINE FIG 5.** The voxelwise comparison of RK values between patients with WMLs and healthy controls. The yellow-to-red areas indicate regions with values that were significantly decreased in the patients, and the color bar on the right-hand side indicates  $T$  values. No significant difference was noted at 1 week after CO intoxication.

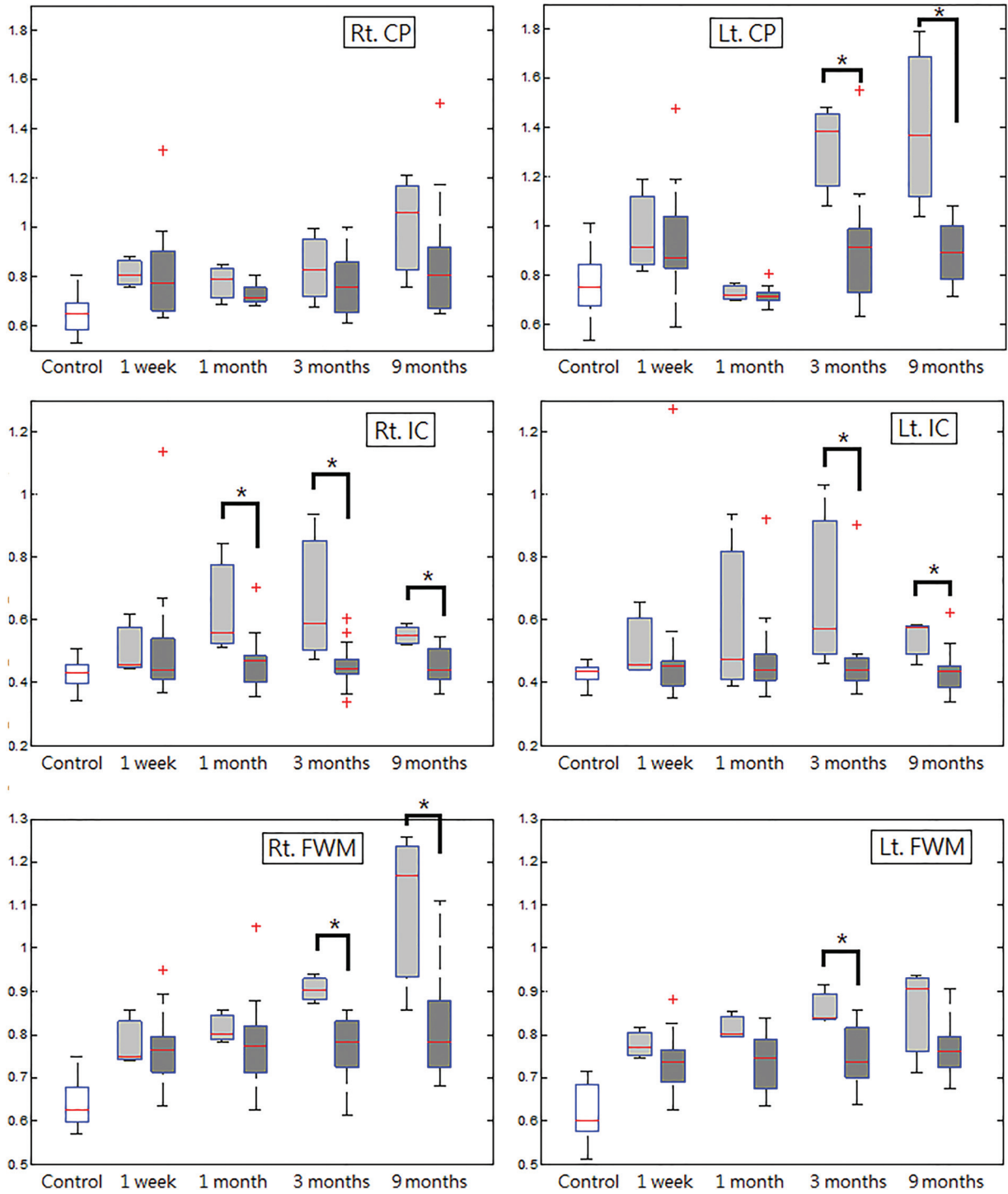
# AD



**ON-LINE FIG 6.** The longitudinal comparisons of AD values between patients with and without DNS in the bilateral CP, IC, and FWM. The unit for AD is  $10^{-3} \text{ mm}^2/\text{s}$ . The asterisk indicates  $P < .05$ ; Rt., right; Lt., left.

RD

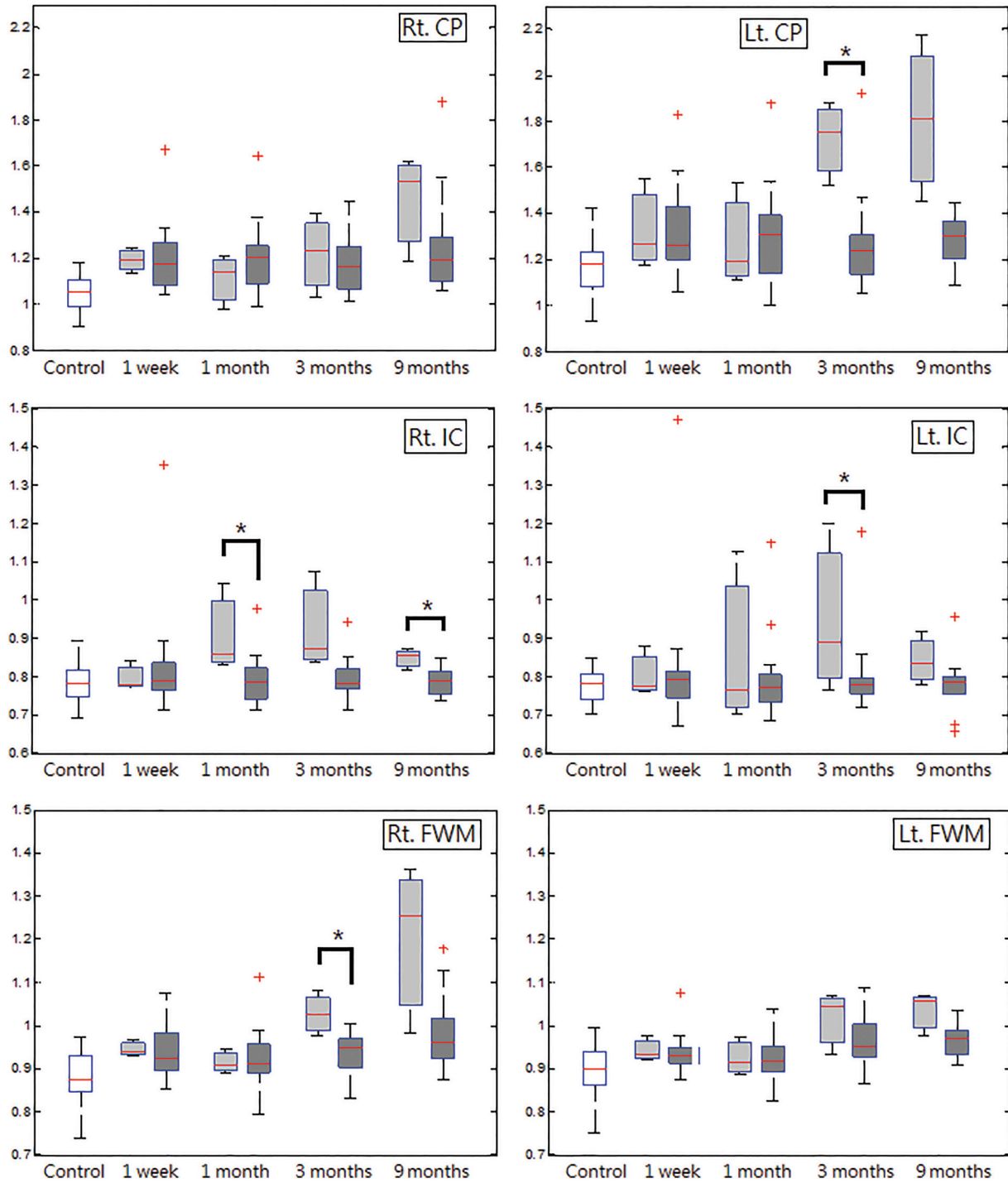
□ Control    □ DNS    ■ non-DNS



**ON-LINE FIG 7.** The longitudinal comparisons of RD values between patients with and without DNS in the bilateral CP, IC, and FWM. The unit for RD is  $10^{-3} \text{ mm}^2/\text{s}$ . The asterisk indicates  $P < .05$ ; Rt., right; Lt., left.

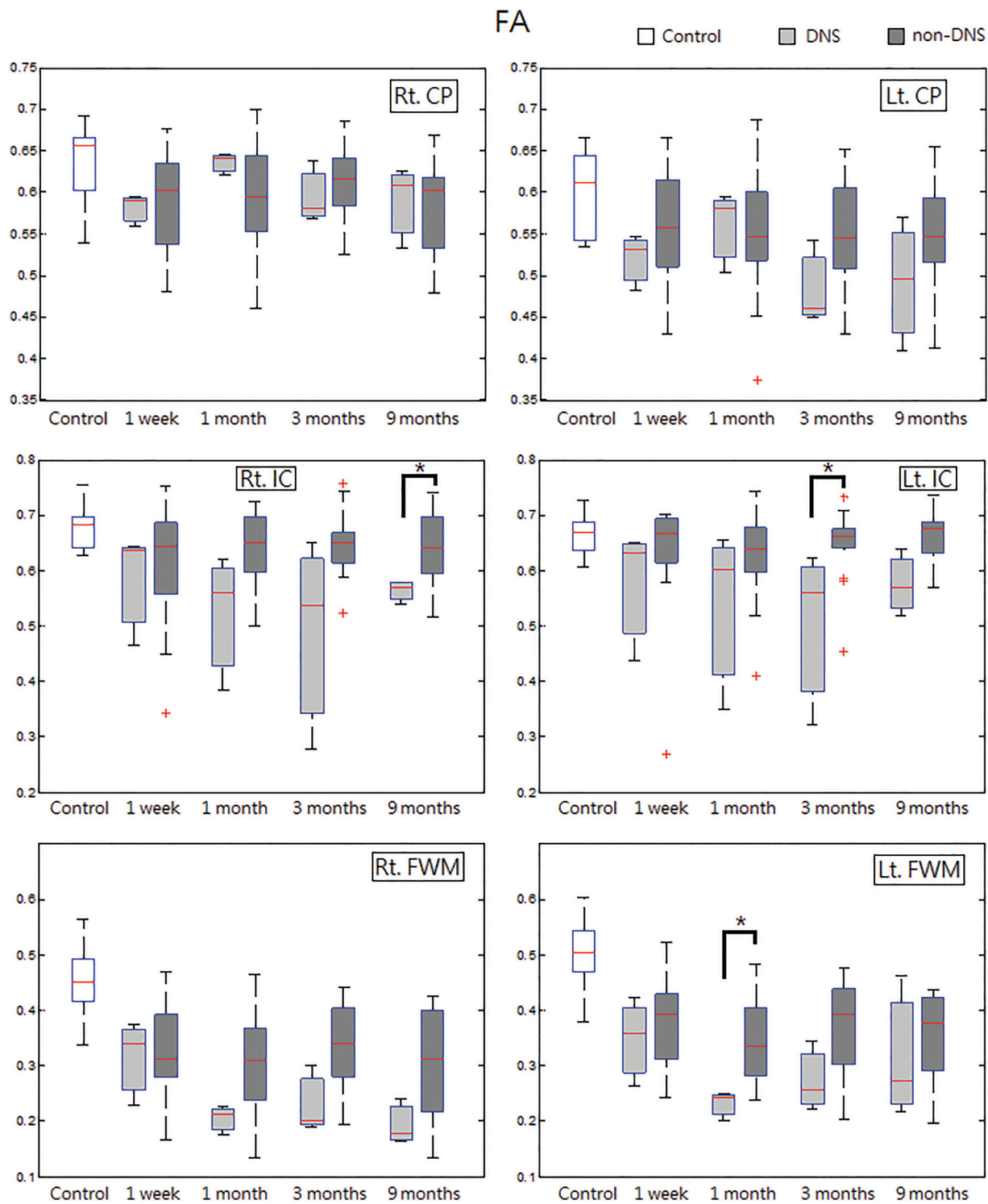
MD

Control DNS non-DNS



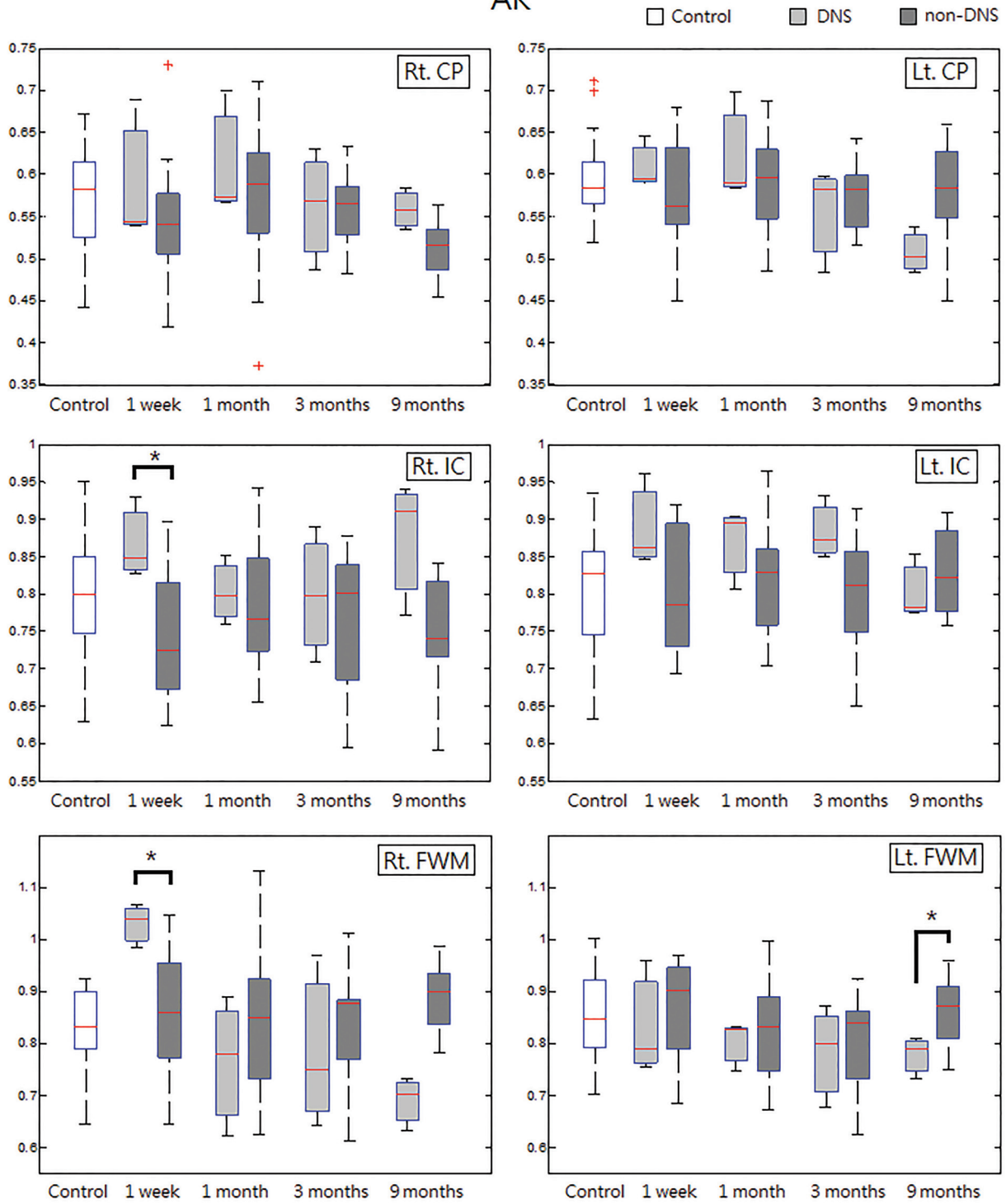
**ON-LINE FIG 8.** The longitudinal comparisons of MD values between patients with and without DNS in the bilateral CP, IC, and FWM. The unit for MD is  $10^{-3} \text{ mm}^2/\text{s}$ . The asterisk indicates  $P < .05$ ; Rt., right; Lt., left.





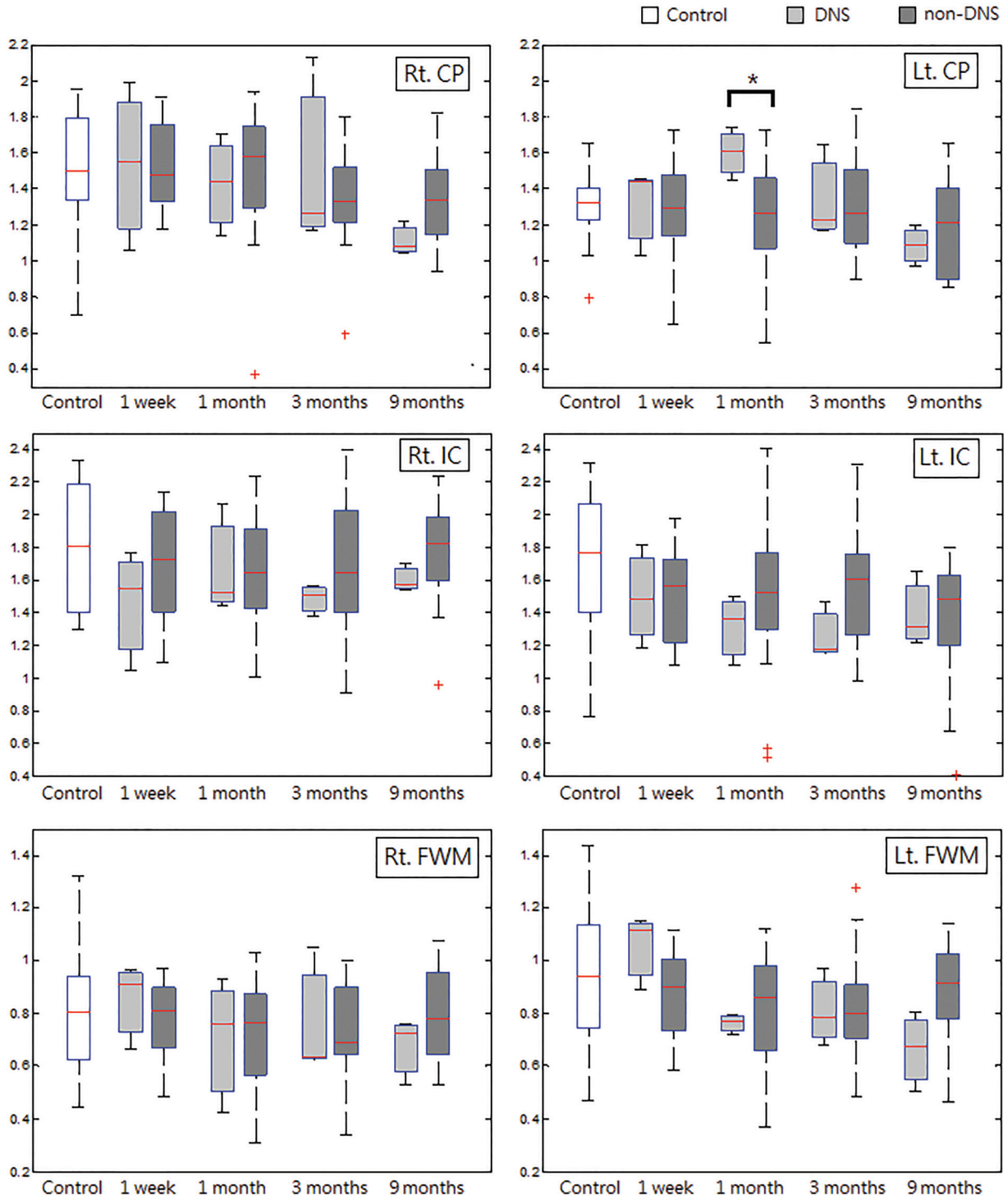
**ON-LINE FIG 9.** The longitudinal comparisons of FA values between patients with and without DNS in the bilateral CP, IC, and FWM. The asterisk indicates  $P < .05$ ; Rt., right; Lt., left.

# AK



**ON-LINE FIG 10.** The longitudinal comparisons of AK values between patients with and without DNS in the bilateral CP, IC, and FWM. The asterisk indicates  $P < .05$ ; Rt., right; Lt., left.

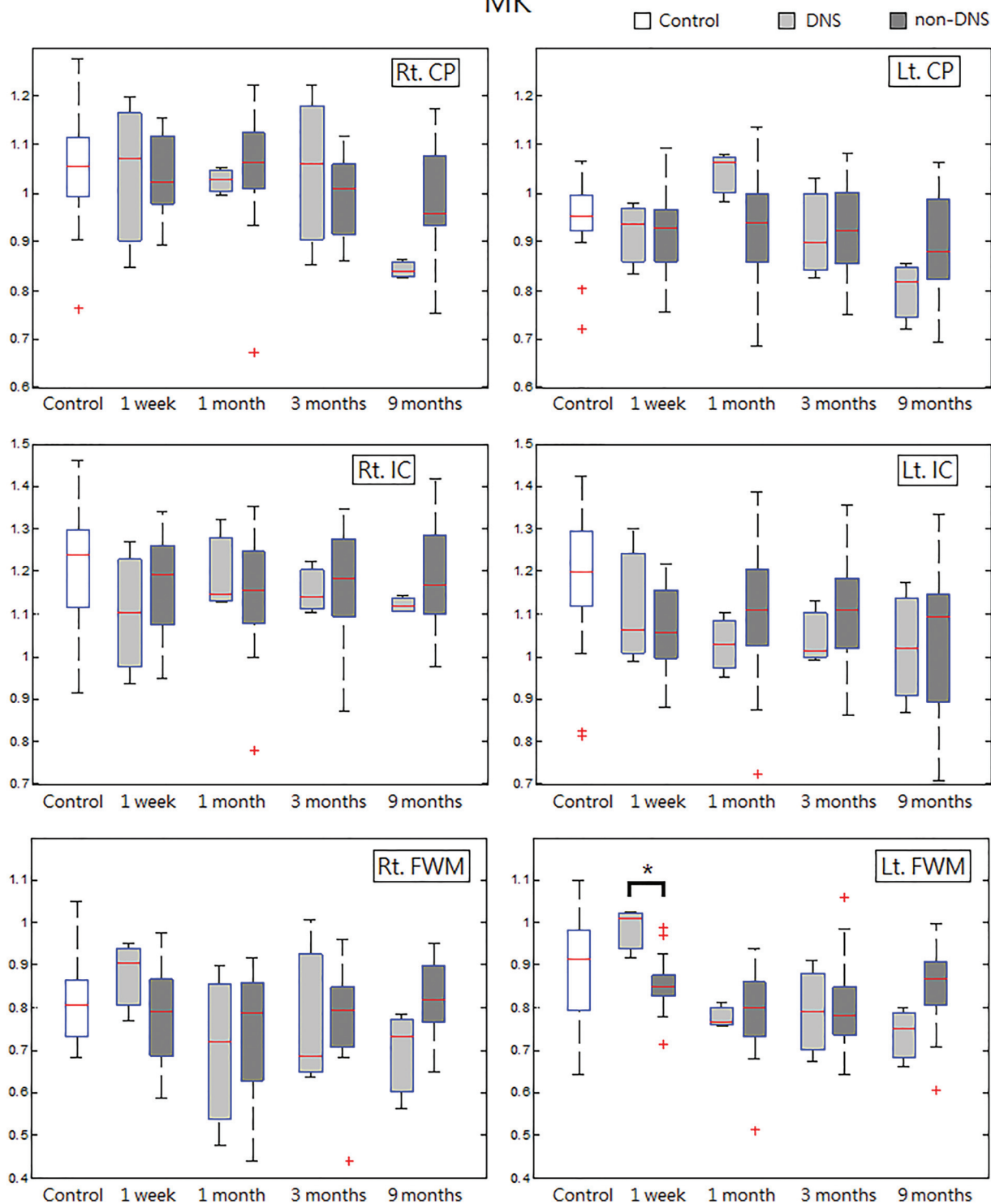
# RK



**ON-LINE FIG 11.** The longitudinal comparisons of RK values between patients with and without DNS in the bilateral CP, IC, and FWM. The asterisk indicates  $P < .05$ ; Rt., right; Lt., left.



# MK



**ON-LINE FIG 12.** The longitudinal comparisons of MK values between patients with and without DNS in the bilateral CP, IC, and FWM. The asterisk indicates  $P < .05$ ; Rt., right; Lt., left.