

Table S1. Clinical and neuroimaging characteristics stratified by 90-day functional Outcome

Variables	All patients (n = 295)	Favorable outcome (n=156)	Unfavorable outcome (n=139)	<i>P</i> value
Age (years)*	71.0 (63.0, 78.0)	69.0 (61.0, 75.0)	73.0 (67.0, 79.0)	< 0.001
Male, n (%)	171 (58.0%)	99 (63.5%)	72 (51.8%)	0.043
LSW to admission time, min*	270 (143, 432)	253 (121, 447)	297 (180, 428)	0.147
≤ 6 h, n (%)	186 (63.1%)	104 (66.7%)	82 (59.0%)	
> 6 h, n (%)	109 (36.9%)	52 (33.3%)	57 (41.0%)	
Large artery occlusion, n (%)				0.737
MCA-M1	196 (66.4%)	100 (64.1%)	96 (69.1%)	
MCA-M2	54 (18.3%)	32 (20.5%)	22 (15.8%)	
ICA	16 (5.4%)	8 (5.1%)	8 (5.8%)	
ICA+MCA-M1	29 (9.8%)	16 (10.3%)	13 (9.4%)	
NIHSS _{admission} *	10 (6, 16)	11 (6, 16)	16 (12, 21)	< 0.001
ASPECTS*	7 (6, 9)	8 (7, 9)	6 (4, 8)	< 0.001
ASPECTS-NWU (%)*	6.83 (5.04, 8.76)	5.73 (3.18, 7.50)	8.00 (6.52, 10.03)	< 0.001
Treatment, n (%)				0.325
Intravenous thrombolysis	32 (10.8%)	15 (9.6%)	17 (12.2%)	
Mechanical thrombectomy	140 (47.5%)	71 (45.5%)	69 (49.6%)	
Bridging therapy	76 (25.8%)	47 (30.1%)	29 (20.9%)	
Standard medical therapy	47 (15.9%)	23 (14.7%)	24 (17.3%)	
Vessel recanalization, n (%)	184 (62.4%)	118 (75.6%)	66 (47.5%)	< 0.001

Note: *Data are expressed as median, IQR (interquartile range presented as the 25th and 75th percentile).

Abbreviations: NIHSS_{admission}, National Institutes of Health Stroke Scale scores at admission; LSW, last seen well; MCA, middle cerebral artery; ICA, internal carotid artery; ASPECTS, Alberta Stroke Program Early CT Score; NWU, net water uptake.

Table S2. Clinical and neuroimaging predictors for a 90-day favorable outcome in a subgroup of patients with low ASPECTS (≤ 5)

Variables	Favorable outcome (n=18)	Unfavorable outcome (n=50)	<i>P</i> value	OR (95% CI)*
Age (years) ^a	64.3 \pm 13.6	70.5 \pm 11.7	0.072	
Male, n (%)	16 (88.9%)	30 (60.0%)	0.025	17.90 (2.17, 147.51)
NIHSS _{admission} ^b	19 (13, 21)	16 (14, 23)	0.621	
LSW to admission time, min ^b	276 (186, 574)	289 (194, 430)	0.147	
Large artery occlusion, n (%)			0.896	
MCA-M1	13 (72.2%)	30 (60.0%)		
MCA-M2	2 (11.1%)	10 (20.0%)		
ICA	1 (5.6%)	3 (6.0%)		
ICA+MCA-M1	2 (11.1%)	7 (14.0%)		
ASPECTS ^b	4 (4, 5)	4 (3, 5)	0.154	
ASPECTS-NWU (%) ^a	8.44 \pm 1.44	10.15 \pm 3.12	0.003	0.56 (0.34, 0.92)
Treatment, n (%)			0.050	
Intravenous thrombolysis	0 (0.0%)	7 (14.0%)		
Mechanical thrombectomy	11 (61.1%)	22 (44.0%)		
Bridging therapy	7 (38.9%)	12 (24.0%)		
Standard medical therapy	0 (0.0%)	9 (18.0%)		
Vessel recanalization, n (%)	18 (100.0%)	21 (42.0%)	< 0.001	

Note: ^a Data are expressed as mean \pm standard deviation. ^b Data are expressed as median, IQR (interquartile range presented as the 25th and 75th percentile). *OR value calculated from multivariable analysis.

Abbreviations: NIHSS_{admission}, National Institutes of Health Stroke Scale scores at admission; LSW, last seen well; MCA, middle cerebral artery; ICA, internal carotid artery; ASPECTS, Alberta Stroke Program Early CT Score; NWU, net water uptake; OR, odds ratio; CI, confidence interval.

Representative cases with good or poor neurological outcomes at 90 days.

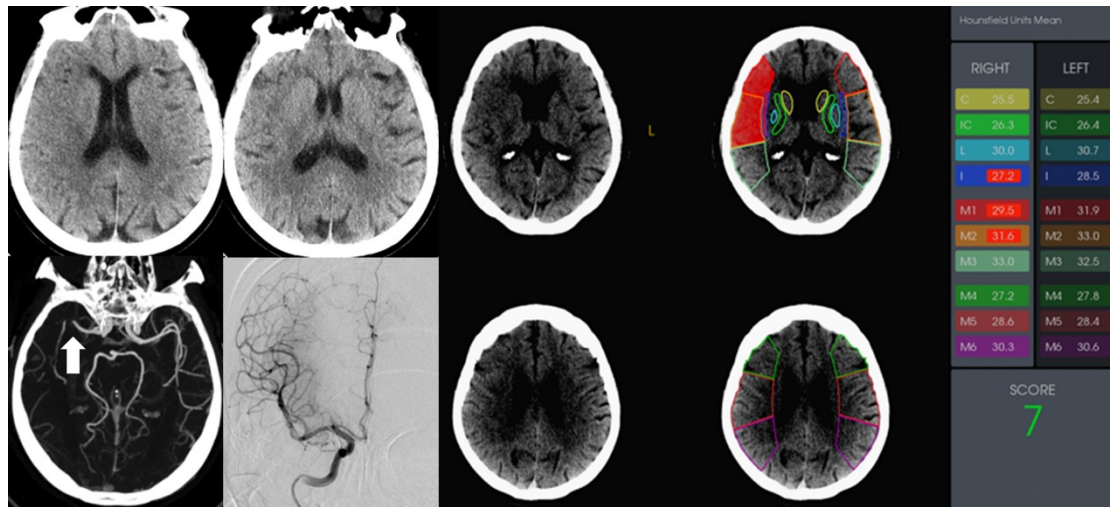


Figure S1. A patient with acute ischemic stroke due to occlusion of the M1 segment of the right middle cerebral artery. The NIHSS and ASPECTS at admission are 12 and 7, respectively. The mean value of ASPECTS-NWU at admission CT is 5.5%. Complete revascularization (mTICI grade 3) is achieved after mechanical thrombectomy. This patient has a favorable outcome, with an mRS score of 2 at 90 days.

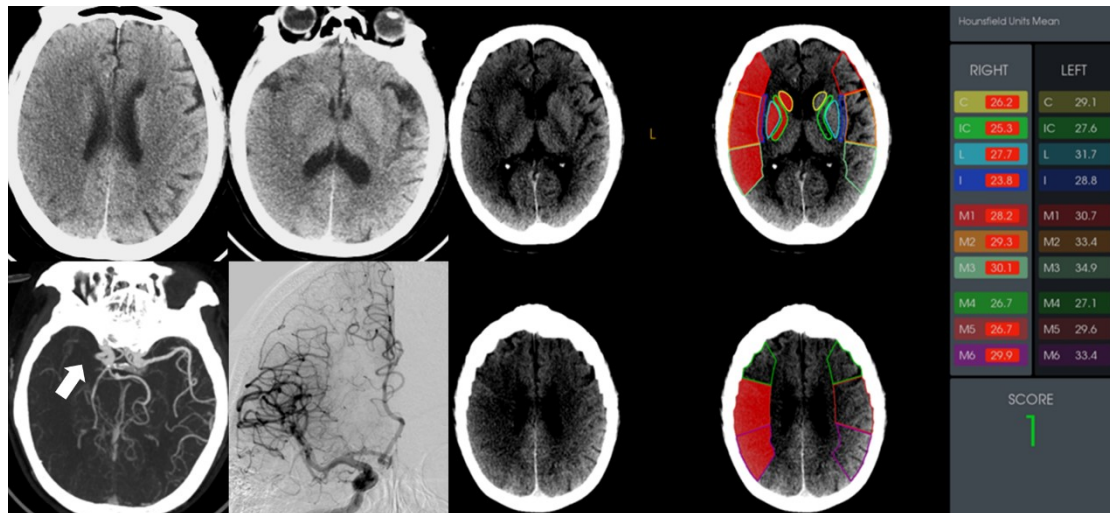


Figure S2. A patient with acute ischemic stroke due to occlusion of the M1 segment of the right middle cerebral artery. The NIHSS and ASPECTS at admission are 21 and 1, respectively. The mean value of ASPECTS-NWU at admission CT is 11.5%. This patient has an unfavorable outcome, with an mRS score of 4 at 90 days, despite good recanalization (mTICI grade 2b).