



Get Clarity On Generics

Cost-Effective CT & MRI Contrast Agents



FRESENIUS
KABI

WATCH VIDEO

AJNR

Clinical and Radiologic Characteristics of Deep Lumbosacral Dural Arteriovenous Fistulas

F. Jablawi, O. Nikoubashman, G.A. Schubert, M. Dafotakis, F.-J. Hans and M. Mull

This information is current as of August 14, 2025.

AJNR Am J Neuroradiol published online 28 December 2017

<http://www.ajnr.org/content/early/2017/12/28/ajnr.A5497>

Clinical and Radiologic Characteristics of Deep Lumbosacral Dural Arteriovenous Fistulas

 F. Jablawi,  O. Nikoubashman,  G.A. Schubert,  M. Dafotakis,  F.-J. Hans, and  M. Mull



ABSTRACT

BACKGROUND AND PURPOSE: Spinal dural arteriovenous fistulas located in the deep lumbosacral region are rare and the most difficult to diagnose among spinal dural arteriovenous fistulas located elsewhere in the spinal dura. Specific clinical and radiologic features of these fistulas are still inadequately reported and are the subject of this study.

MATERIALS AND METHODS: We retrospectively evaluated all data of patients with spinal dural arteriovenous fistulas treated and/or diagnosed in our institution between 1990 and 2017. Twenty patients with deep lumbosacral spinal dural arteriovenous fistulas were included in this study.

RESULTS: The most common neurologic findings at the time of admission were paraparesis (85%), sphincter dysfunction (70%), and sensory disturbances (20%). Medullary T2 hyperintensity and contrast enhancement were present in most cases. The filum vein and/or lumbar veins were dilated in 19/20 (95%) patients. Time-resolved contrast-enhanced dynamic MRA indicated a spinal dural arteriovenous fistula at or below the L5 vertebral level in 7/8 (88%) patients who received time-resolved contrast-enhanced dynamic MRA before DSA. A bilateral arterial supply of the fistula was detected via DSA in 5 (25%) patients.

CONCLUSIONS: Clinical symptoms caused by deep lumbosacral spinal dural arteriovenous fistulas are comparable with those of spinal dural arteriovenous fistulas at other locations. Medullary congestion in association with an enlargement of the filum vein or other lumbar radicular veins is a characteristic finding in these patients. Spinal time-resolved contrast-enhanced dynamic MRA facilitates the detection of the drainage vein and helps to localize deep lumbosacral-located fistulas with a high sensitivity before DSA. Definite detection of these fistulas remains challenging and requires sufficient visualization of the fistula-supplying arteries and draining veins by conventional spinal angiography.

ABBREVIATIONS: AV = arteriovenous; CE-MRA = time-resolved contrast-enhanced dynamic MRA; FV = filum terminale vein; lsSDAVF = deep lumbosacral spinal dural arteriovenous fistula; SDAVF = spinal dural arteriovenous fistula

Despite being the most common spinal vascular malformation, spinal dural arteriovenous fistulas (SDAVFs) are rare and still underdiagnosed entities.^{1,2} The incidence of SDAVF in the general population is 5–10/million/year.^{3–5}


A recent meta-analysis of all case series that included >5 patients concluded that men were affected 5 times more often than women and that the mean age at the time of diagnosis was

55–60 years.⁶ If not treated properly, SDAVFs are associated with a considerable morbidity with progressive spinal cord symptoms.^{1,7,8} The clinical presentation of an SDAVF can be ascribed to venous congestion due to pathologic arteriovenous (AV) shunts in most cases.⁹ Initial symptoms are often non-specific.³ They include gait difficulties, symmetric or asymmetric sensory symptoms such as paraesthesia in 1 or both feet, diffuse or patchy sensory loss, and radicular pain.⁶ More than 80% of all SDAVFs are located between T6 and L2, but SDAVFs can occur anywhere along the dura of the spinal canal.⁷ According to various reports, fistulas in the sacral region occur in approximately 4% of patients with SDAVFs.^{6,10} However, larger series dealing with SDAVFs located in the deep lumbosacral region (lsSDAVF) are still lacking in the literature. The purpose of our study was to evaluate the clinical and radiologic data of 20 patients with lsSDAVFs presenting to our center between 1990 and 2017.

Received June 5, 2017; accepted after revision October 2.

From the Departments of Diagnostic and Interventional Neuroradiology (F.J., O.N., M.M.), Neurosurgery (G.A.S.), Diagnostic and Interventional Radiology (O.N.), and Neurology (M.D.), RWTH Aachen University Hospital, Aachen, Germany; and Department of Neurosurgery (F.-J.H.), Paracelsus Kliniken, Osnabrück, Germany.

Please address correspondence to Michael Mull, MD, Department of Diagnostic and Interventional Neuroradiology, RWTH Aachen University Hospital, Pauwelsstr 30, 52074 Aachen, Germany; e-mail: mmull@ukaachen.de

 Indicates article with supplemental on-line photo.

<http://dx.doi.org/10.3174/ajnr.A5497>

MATERIALS AND METHODS

After obtaining permission from our local ethics board, we retrospectively evaluated the medical and radiologic reports of the RWTH Aachen University Hospital for patients diagnosed with SDAVF between January 1990 and March 2017. SDAVFs located above the L5 vertebral level and arteriovenous malformations of the filum terminale were excluded from our analysis.

Two experienced physicians analyzed the radiologic data blinded to all clinical data. A reference standard for statistical analysis was established in a consensus reading.

The extension of the T2 signal hyperintensity and the medullary contrast enhancement were qualified by the number of vertebral levels shown to be affected on T1 and T2 MR images. The appearance of the perimedullary veins was rated subjectively as absent, mild, or prominent due to their tortuous and dilated appearance on the T1 and T2 images.

The neurologic status was assessed according to the Aminoff-Logue disability score (AL-score). We re-evaluated the documented neurologic status at the time of admission (AL-score), the duration of symptoms from onset until diagnosis, as well as previous misdiagnosis and treatment.

Diagnostic Tools

MR Imaging/MRA. Before admission to our center, all 20 patients underwent extensive spinal DSA and/or MR imaging (0.5T and/or 1.5T). Two experienced physicians analyzed the radiologic data blinded to all clinical data. A reference standard for statistical analysis was established in a consensus reading.

The extension of the T2 signal hyperintensity and the medullary contrast enhancement was qualified by the number of vertebral levels shown to be affected on T1 and T2 MR images. The appearance of the perimedullary veins was rated subjectively as absent, mild, or prominent due to their tortuous and dilated appearance in the T1 and T2 images.

Moreover, 8/19 patients who were admitted after time-resolved contrast-enhanced MR angiography (CE-MRA) in our institution underwent additional spinal CE-MRA (1.5T) before DSA. MRA was performed on a clinical 1.5T MR imaging system with a phased array spine coil. The MR imaging protocol included 3 different pulse sequences: First, T2-weighted survey images were acquired to depict the course of the spinal cord as an anatomic reference. Second, MR fluoroscopy, performed with administration of a 2-mL test bolus of gadolinium-based contrast agent (gadopentetate dimeglumine; vial concentration, 0.5 mol/L), was used to determine the optimal scan delay between contrast injection and the start of the MRA acquisition. Finally, we performed a dynamic 2-phase 3D fast-spoiled gradient-echo pulse sequence with 45 mL of contrast agent. These 2 phases served to distinguish relatively early contrast enhancement, which mainly involves (normal and/or pathologic) arteries and arterialized veins, from later enhancement in which arteries and arterialized veins but also normal veins are visualized together. The number of sections was individually adjusted (range, 75–85 mm; 45–51 mm) to include the vertebral column, usually from T3 to S5. The precise evaluation was then achieved by MPR and maximum intensity projection. If initial CE-MRA findings were suspicious for a fistula zone, we performed additional coronal and axial contrast-

enhanced T1-weighted images focused on the suspected fistula region. Further details about our spinal CE-MRA technique have been previously described.^{1,11}

DSA. After re-evaluation of all previous spinal angiographic examinations performed elsewhere before admission to our center, we finally focused our further DSA examinations on the lumbosacral region.

DSA was performed with a femoral approach in a dedicated biplanar neuroangiographic suite. Standardized angiography included selective manual injections of 4–5 mL of 300 mg/mL of iodinated nonionic contrast medium into the lumbar and intercostal arteries. Furthermore, injections into both vertebral arteries, the costocervical arteries, the thyrocervical trunks, and the arterial feeders of the sacral region were added. Imaging was in the anteroposterior direction with 2 frames per second. Oblique and lateral views were added to elucidate the morphology of the AV shunt as well as the intradural course of the draining veins. Film sequences of at least 5–20 seconds were obtained. In 2 patients, in whom lsSDAVF was previously diagnosed elsewhere before referral to our center, our DSA examinations included solely the deep lumbosacral region.

Statistics

Pearson χ^2 tests and Fisher exact tests were used when applicable. Student *t* tests and Mann-Whitney *U* tests were used when applicable after testing for data distribution with a Shapiro-Wilk test. *P* values with an α level of $\leq .05$ were significant. All statistical analyses were performed with SPSS 23 software (IBM, Armonk, New York).

RESULTS

We identified 194 patients with SDAVFs located anywhere along the spine. Twenty (10.3%) of these patients had lsSDAVFs and were included in our study.

Clinical Features

Table 1 provides an overview of clinical findings in all 20 patients included in this study. Seventeen of 20 (85%) patients were men. The mean age was 63 ± 5 years (median, 63.5 years; range, 53–78 years). Overall, 16 (80%) patients experienced a gradual onset and progressive deterioration of neurologic function. The remaining 4 (20%) patients had a rapid deterioration of their motor function in the lower extremities within a mean period of 2.5 months (range, 1–4 months) and presented with a severe motor disability at time of admission.

However, the most common neurologic finding at time of admission at our institution was subjective and objective gait disturbances of the lower extremities. Paresis in the lower extremities was present in 17 (85%) patients. The remaining 3 patients (15%) had a slowly progressive ataxia and hypesthesia without manifest motor deficits. Sensory symptoms in various severities were documented in 18 (90%) patients and comprised diffuse loss of sensation and/or paresthesia in the lower extremities. One (case 15) of these 18 patients had dysesthesia from the T12 level downward. Fourteen (70%) patients presented with a sphincter dysfunction at time of admission to our institution.

The mean time between clinical onset and diagnosis in all 20 patients was 15 ± 12 months (median, 15 months; range, 1–36

Table 1: Clinical presentation of patients with deep lumbosacral spinal dural arteriovenous fistulas

Case No.	Age (yr)/Sex	Duration of Symptoms (mo)	Symptoms at Time of Diagnosis	AL-Score	Previous Diagnosis and Treatment
1	66, M	24	Paraparesis 3/5 ^a , sensory transverse lesion L5, sphincter dysfunction	3	Lumbar disc prolapse: discectomy L4–5
2	56, M	36	Paraparesis 3/5, sensory transverse lesion L2	3	
3	63, M	24	Paraparesis 2–3/5, sensory transverse lesion L1, sphincter dysfunction	4	
4	60, M	30	Paraparesis 4/5, sensory transverse lesion L4, sphincter dysfunction	3	Lumbar disc prolapse: discectomy L3–4, L4–5
5	71, M	14	Distal accentuated paraparesis 3/5, mild hypesthesia of the right leg	3	
6	66, M	18	Paraparesis 3/5, sensory transverse lesion L5, sphincter dysfunction	4	Lumbar spinal stenosis: dorsal decompression L1–2
7	55, M	2	Paraplegia and anesthesia below T8, sphincter dysfunction	5	
8	67, M	26	Paraparesis 4/5, sensory transverse lesion T12, sphincter dysfunction	2	Intramedullary tumor: biopsy
9	73, M	9	Paraparesis 3/5, sensory transverse lesion T5, sphincter dysfunction	4	Intramedullary tumor: biopsy
10	70, M	3	Paraparesis 3/5, sensory transverse lesion S1, sphincter dysfunction	4	
11	69, M	6	Paraparesis 1–2/5, sensory transverse lesion L4, sphincter dysfunction	5	
12	67, F	12	No paresis, hypesthesia below T11, ataxia	1	
13	63, M	1	Paraparesis 3/5, sphincter dysfunction	3	
14	61, M	11	Distal accentuated paraparesis 3/5, hypesthesia of the right leg, ataxia, sphincter dysfunction	3	Lumbar spinal stenosis: dorsal decompression and discectomies L4–5, L5–S1
15	67, F	9	Paraparesis 4/5, dysesthesia below T12, paresthesia on the dorsum of the left foot	2	Lumbar disc prolapse: discectomy L5–S1
16	63, M	ND	No paresis, sensory transverse lesion L1, ataxia, sphincter dysfunction	1	Repeat insufficient embolizations of lsSDAVF
17	55, M	10	Monoparesis left foot	1	Lumbar stenosis: dorsal decompression
18	78, M	4	Spastic paraparesis 3/5, paresthesia in both feet, sphincter dysfunction	4	
19	74, M	24	Paresis of the left leg 4/5, diffuse paresthesia of the lower extremities	2	
20	53, F	6	No paresis, diffuse paresthesia of the lower extremities, mild ataxia, mild sphincter dysfunction	1	

Note:—AL-Score indicates Aminoff-Logue disability score; ND, no data.

^a Muscle strength grade.

Table 2: Radiologic features of deep lumbosacral spinal dural arteriovenous fistulas

Case No.	MRI/MRA						DSA	
	Shunt Location	T2/T1 Hyperintensity (Extension)	Contrast Enhancement (Extension)	Perimedullary Vein Enlargement (Extension)	Prominent FV	Prominent Lumbar Vein	DSA until Diagnosis	Arterial Feeder
1	S1R	T7-conus	T9–T10	Mild, T7–T8	No	No	4	Iliolumbar artery R
2	L5 R	T9–T11	T5–T11	Mild, T5–T11	No	Yes	4	Iliolumbar artery R
3	S1 L	T8-conus	Absent	Absent	Yes	No	4	Middle sacral artery L
4	S1R	T9-conus	Absent	Mild, T10–T12	Yes	No	3	Iliolumbar artery R
5	S1R	T3-conus	ND	ND	Yes	No	3	Iliolumbar artery R
6	L5 L	T8-conus	T9-conus	Mild, T10–T12	No	Yes	2	L5 L
7	S1R	T6-conus	T8–T12	Mild, T7–T11	No	Yes	2	Lateral sacral artery L
8	S2 R	T10–T12	T11–T12	Mild, T11–T12	Yes	No	3	Lateral sacral artery R
9	L5 L	T4-conus	T9–T12	Absent	No	Yes	3	L4 L
10	S1R	T4-conus	Absent	Severe, T6-conus	Yes	No	2	Lateral sacral artery R
11	S1R	T6-conus	T12–L1	Mild, T6-conus	No	Yes	5	Iliolumbar artery bilateral
12	S3 R	T10-conus	T12	Severe, T7-conus	Yes	No	3	Lateral sacral artery bilateral
13	S1R	T2-conus	T12-conus	Mild, T8-conus	Yes	No	4	Iliolumbar artery R
14	S2 L	T5-conus	T7-conus	Mild, T8–L3	Yes	No	4	Iliolumbar artery bilateral
15	S1 L	T5-conus	Absent	Severe, T7-conus	Yes	No	2	Lateral sacral artery L
16	S2 L	Absent	T10–L1	Absent	Yes	No	2	Iliolumbar artery L
17	S1 L	T5-conus	T4–L1	Mild, T3–T4	Yes	No	2	Iliolumbar artery bilateral
18	S2 L	T8–T12	T8–T11	Mild, T9–T12	Yes	No	5	Iliolumbar artery bilateral
19	L5 R	T8-conus	T8-conus	Severe, T6–T12	No	Yes	2	Iliolumbar artery R
20	S2 R	T12-conus	T9-conus	Mild, T7–T11	No	Yes	1	Lateral sacral artery

Note:—R indicates right; L, left; ND, no data.

months). The mean Aminoff-Logue disability score at time of admission was 3 ± 1.5 (median, 3; range, 1–5).

Overall, 9 of 20 (45%) patients had undergone other treatments before admission to our institution. Six of these 9 patients underwent microsurgical lumbar dorsal decompression and/or discectomy due to the assumption of a spinal degenerative disease. Two other patients underwent a biopsy with the assumption of an intramedullary tumor. The remaining patient was admitted to our center due to recurrence of the lsSDAVF after repeat endovascular treatment performed elsewhere.

Radiologic Findings

Table 2 provides an overview of radiologic findings in all 20 patients.

On preoperative MR imaging, there was a medullary T2-weighted hyperintense signal in all except 1 patient (95%) (mean, 7 vertebral levels; range, 0–13 vertebral levels). The signal alteration involved the conus medullaris in 16 (80%) patients. There was intramedullary contrast enhancement in 15 (75%) patients (mean, 3 vertebral levels; range, 1–10 vertebral levels). Another 16 (85%) patients presented with an enlargement of the perimedul-

lary veins in the upper thoracic and/or thoracolumbar region in various extensions (mean, 4 vertebral levels; range, 0–7 vertebral levels). The filum terminale vein (FV) was dilated in 12 (60%) patients; in another 7 (35%) patients, other dilated lumbar veins were detected. In the remaining patient, no pathologic changes of the FV or the lumbar radicular veins were obvious in the presence of dilated perimedullary veins.

All 20 patients underwent repeat spinal DSA until a definite diagnosis was established (mean, 3 DSAs; range, 2–5 DSAs).

Overall, 8 (40%) patients received preoperative spinal CE-MRA, which revealed no evidence of an SDAVF in the upper thoracic or thoracolumbar region. However, in 7 of these 8 (88%) patients, CE-MRA demonstrated a prominent FV or lumbar radicular vein in the MIP, and MPR images suggested fistula localization in the deep lumbosacral region.

In 4 (20%) patients, the dilated perimedullary veins in the thoracolumbar region were microsurgically exposed and the direction of flow was assessed via Doppler sonography. The subsequent DSA was focused on the lumbosacral region, and a lsSDAVF could be identified in all 4 patients.

DSA revealed, in 17 (85%) patients, an arterial supply via the arches of the internal iliac arteries, namely the iliolumbar ($n = 11$) and the lateral sacral arteries ($n = 6$). The remaining 3 patients presented with an arterial supply via the middle sacral artery and the L4 and L5 segmental arteries, respectively.

In 5 (25%) of these 20 patients, DSA demonstrated a bilateral arterial supply via both the iliolumbar arteries ($n = 4$) and lateral sacral arteries ($n = 1$). There were no major complications related to angiography.

DISCUSSION

Because most studies that deal with lsSDAVFs are case reports and smaller case series, more comprehensive studies are lacking.¹² Thus, it was our aim to describe the clinical and radiologic features of lsSDAVFs in a series of 20 consecutive patients who presented to our institution. In the literature, the sacral region was considered a rare location for SDAVFs (4%).^{10,13} However, the incidence of lsSDAVF in our recent series accounts for up to 10.3% of patients with SDAVF. This higher rate of lsSDAVFs in our series is explained by the large number of patients with suspected SDAVFs who were referred to our institution as a tertiary referral center for spinal vascular diseases. Moreover, our current study also included SDAVFs localized at the L5 vertebral level ($n = 4$).

Nonetheless, to the best of our knowledge, our study represents, at the time of this writing, the largest single-center series dealing with clinical and radiologic features of lsSDAVF.

Clinical Features

The clinical presentations of SDAVFs of various locations are often nonspecific and may mimic a variety of conditions.^{14–16} Initial symptoms reported in the literature range from low back pain to complete spastic paraplegia.^{4,15,17} Comparing our recent findings with a previous analysis of SDAVFs presented to our center between 1989 and 2002, we observed no essential differentiations between clinical symptoms caused by lsSDAVFs and those caused by SDAVFs in other locations.¹⁸ Similar to patients with SDAVFs

in other locations, most patients in our recent study had a slightly progressive paraparesis, sensory abnormalities, and sphincter dysfunctions at time of admission.¹⁸

Moreover, the relatively high rate of misdiagnosis in patients with lsSDAVFs (40%) demonstrates the difficulties in detecting the suspected fistula and the broad spectrum of probable differential diagnoses.

These difficulties, in turn, may lead to clinically relevant delays until the correct diagnosis is established. It has been hypothesized that clinical symptoms become more severe the longer the correct diagnosis and treatment are delayed and the venous congestion persists.^{4,10,19} We could not identify a significant correlation between symptom duration and the severity of morbidity for all 20 patients ($P = .41$). Nevertheless, intraindividual progressive deterioration of symptoms was present in all our patients.

Radiologic Findings

Consistent with findings of fistulas in other locations, typical MR imaging findings in our series were a combination of intramedullary edema and dilated perimedullary vessels.^{9,20} In most cases, the spinal cord demonstrated contrast enhancement reflecting a disturbance of the blood-cord barrier in the presence of venous congestion.^{1,21,22}

Nevertheless, the enlargement of the perimedullary veins was absent and mild in 14 (70%) patients and prominent in only 4 (20%) patients. Additionally, dilated FV or radicular veins in the deep lumbosacral region were the hallmark of lsSDAVFs in our MR images and were present in 95% of patients.

In all 7 of 8 (88%) patients who underwent CE-MRA, the arterialized FV and lumbar veins appeared even more prominent than the enlarged perimedullary veins in the respective cases. Moreover, the multiplanar reconstruction of CE-MRA images in our series allowed a sufficient differentiation between FV and other lumbar veins. At least 3-mm sagittal sections in T1/T2 MR images are necessary to identify these veins.

The prominent appearance of the FV in patients with lsSDAVF has been previously discussed in a few reports.^{20,23} However, our recent findings demonstrate that the deep lumbosacral course of either a prominent arterialized FV or other lumbar radicular veins combined with typical medullary congestion should always evoke the differential diagnosis of an AV shunt in this region, even in the absence of prominent perimedullary veins (Figure).

One of the milestones in the diagnostic evaluation of spinal vascular malformations was the development of time-resolved contrast-enhanced MR angiography.^{1,11} In a series reported by Mull et al,¹ the MRA-derived level of the feeding artery in SDAVFs agreed with DSA findings in 14 of 19 cases, including 2 patients with lsSDAVF at the S1–2 level. In the remaining 5 cases, a mismatch of only 1 vertebral level (not side) was noted for the feeding artery.

CE-MRA facilitates localizing the AV shunt by focusing the DSA on the assumed fistula region, resulting in a shorter intervention time, less contrast agent application, and a lower exposure dose.^{1,11}

In fact, the need for microsurgical exploration to identify the blood flow in the arterialized veins in the thoracolumbar region

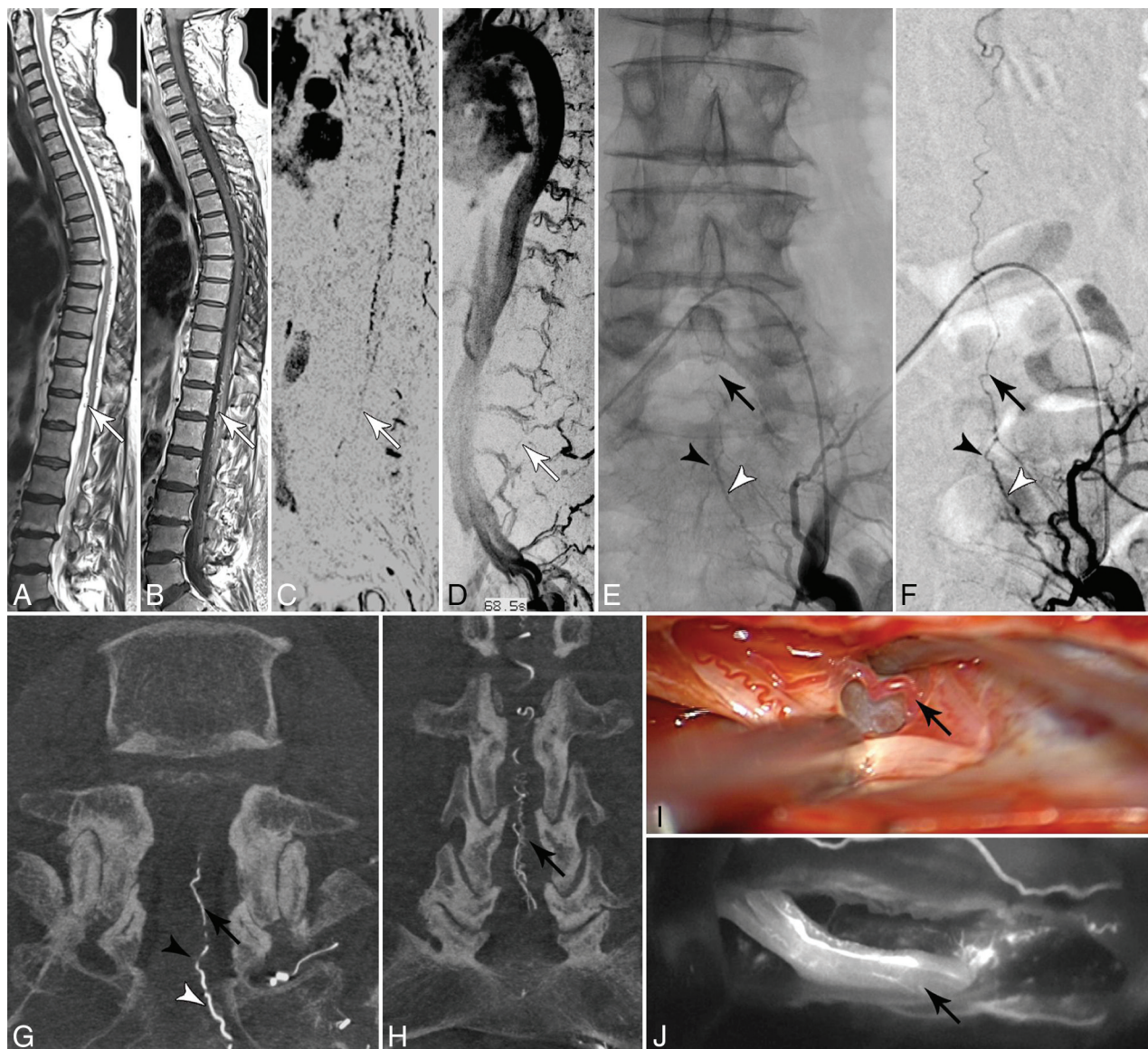


FIGURE. A and B, Sagittal T2- and contrast-enhanced T1-weighted images reveal congestive myelopathy and dilated perimedullary veins (white arrows). C and D, Spinal CE-MRA shows dilated radicular veins in the lumbar region suspicious for an SDAVF in the lumbosacral region (white arrows). E–H, DSA examinations identify the fistula in the dural sleeve of the left S2 root (black arrowhead) supplied via the lateral sacral artery (white arrowhead). Note the upward draining sacral radicular vein (black arrow). I and J, Intraoperative indocyanine green angiography confirms the intradural course of the arterialized draining vein (black arrow) embedded at the ventral side of the S2 nerve root.

decreased in our series after establishment of the CE-MRA technique in our center.

Due to our recent experience, we found that more advanced 4D-MRA techniques with better time resolution may provide additional information about the flow direction in the intradural arterialized veins.

DSA remains the criterion standard for the definite diagnosis of SDAVF.^{1,3,14,21} Whenever a spinal AV shunt is suspected, an angiography of all thoracic and lumbar segmental arteries is required. In nonconclusive cases, further examination of cervical and pelvic arterial feeders is required.²⁰

However, despite technologic advances, DSA of the pelvic region remains technically challenging. A trivial-but-common problem that resulted in an impaired DSA image quality was bowel dysfunction, present in most patients in our series. We

could overcome these difficulties by the prophylactic administration of spasmolytic medication 1 day before or during the DSA.

Moreover, due to the low-flow character of these fistulas and the long drainage up to the conus medullaris, lsSDAVFs could be easily missed by inexperienced readers during DSA. Thus, prolonged DSA series with additional oblique and lateral projections are recommended in these patients.

The fistula locations in our series ranged from L5 to S3 level. Sixteen of 20 (85%) demonstrated an arterial supply via arches of the internal iliac arteries. The arterial supply of the remaining 3 fistulas was unusual: Case 3 presented with an lsSDAVF localized at the S1 level, with an arterial supply via the middle sacral artery; cases 6 and 9 presented with a fistula localized at the L5 level with an arterial supply via an atypical L5 segmental artery arising from the abdominal aorta and a descending L4 segmental artery, re-

spectively. Most interesting, fistulas localized at the L5 level ($n = 4$) presented with a broad variety of arterial feeders comprising the iliolumbar arteries and L4 and L5 segmental arteries.

Moreover, 5 (25%) of 20 patients in our series presented with a bilateral arterial supply via the arches of both internal iliac arteries (On-line Figure).

The detection of a bilateral arterial supply of an lsSDAVF was significantly higher in patients who were diagnosed after establishment of CE-MRA in 2003 in our center ($P < .05$). This finding reflects growth in our own experience in diagnosing these fistulas and the development of multimodal diagnostic tools.

The complex angioarchitecture in the deep lumbosacral region with a variant and frequently bilateral arterial supply may contribute to difficulties in identifying the fistula. Thus, an optimal DSA examination for the sacral region requires selective and long visualization of all lumbar segmental arteries, the middle sacral artery, and both internal iliac arteries and their arches. If these examinations remain nonconclusive, super selective catheterization of potential feeding arteries in the pelvic and lumbar region may be indicated. Moreover, the bilateral arterial supply in these patients could be sufficiently visualized in series with super-selective distal microcatheter injection, resulting in a better opacification of the feeding arteries.

Whenever the AV shunt is identified, the ipsilateral and contralateral feeding arteries above and below the fistula should be examined to exclude the possibility of multiple arterial feeders to the fistula zone from the adjacent arteries.^{1,24}

Nonetheless, once an AV shunt in the deep lumbosacral region is suspected, the most probable differential diagnosis for an SDAVF is an arteriovenous malformation of the filum terminale. In both cases, namely SDAVF and filum terminale-AVM, symptoms are caused by medullary venous congestion resulting in comparable myelopathic disorders and a progressive clinical course. In contrast to lsSDAVFs, the filum terminale artery arising from the anterior spinal artery predominantly feeds a filum terminale-AVM.

Even though the filum terminale-AVM is an extremely rare disease, one should be aware of this differential diagnosis in every suspected AV shunt located in the deep lumbosacral region.

In inconclusive repeat DSAs, the search for the exact fistula localization should not be discontinued in patients with a high probability of an SDAVF.²⁵ In certain cases, a surgical exploration of the arterialized perimedullary veins might be helpful; to facilitate the detection of the fistula localization in subsequent DSA in 4 patients with repeat nonconclusive DSA examinations, we microsurgically exposed the arterialized perimedullary veins in the thoracolumbar region at the level with the greatest vein enlargement. We then assessed the direction of blood flow in these veins via intraoperative Doppler sonography. In all 4 cases, a caudocranial blood flow was detected. Thus, subsequent DSA examinations were focused on the thus assumed deep lumbosacral origin of the fistula. This strategy was successful in all 4 cases.

In summary, we note that lsSDAVFs remain diagnostically challenging, even in experienced hands. Spinal CE-MRA provides, in most the cases, a sufficient visualization of the perimedullary and lumbar draining veins and facilitates the subsequent DSA examinations. However, for a precise fistula localization,

DSA remains the criterion standard diagnostic tool. The low-flow characteristics of these fistulas with a frequently variant arterial supply and problems of optimal visualization may cause serious difficulties in localizing the fistula via DSA. Thus, optimized DSA examinations require a sufficient visualization of all potential feeding arteries and draining veins in the pelvic and lumbar regions.

In practice, prolonged series as well as additional oblique and special lateral projections help visualize the intradural course of the draining vein up to the conus.

CONCLUSIONS

Clinical symptoms caused by lsSDAVFs are often nonspecific and may mimic a variety of conditions. The presence of a dilated FV and/or lumbar radicular vein on MR imaging/CE-MRA combined with typical congestive medullary changes should always evoke the differential diagnosis of an arteriovenous shunt in the deep lumbosacral region, even in the absence of perimedullary dilated veins. However, identifying lsSDAVF via DSA remains challenging due to the complex and variant spinal arterial supply in this region and the difficulties in the optimal visualization of the lumbosacral region.

REFERENCES

1. Mull M, Nijenhuis RJ, Backes WH, et al. **Value and limitations of contrast-enhanced MR angiography in spinal arteriovenous malformations and dural arteriovenous fistulas.** *AJNR Am J Neuroradiol* 2007;28:1249–58 [CrossRef Medline](#)
2. Jablawi F, Nikoubashman O, Mull M. **Arterial hypertension is associated with symptomatic spinal dural arteriovenous fistulas.** *World Neurosurg* 2017;103:360–63 [CrossRef Medline](#)
3. Thron A. **Spinal dural arteriovenous fistulas** [in German]. *Radiologe* 2001;41:955–60 [CrossRef Medline](#)
4. Behrens S, Thron A. **Long-term follow-up and outcome in patients treated for spinal dural arteriovenous fistula.** *J Neurol* 1999;246:181–85 [CrossRef Medline](#)
5. Thron A, Krings T, Otto J, et al. **The transdural course of radicular spinal cord veins: a microangiographical and microscopical study.** *Clin Neuroradiol* 2015;25:361–69 [CrossRef Medline](#)
6. Jellema K, Tijssen CC, van Gijn J. **Spinal dural arteriovenous fistulas: a congestive myelopathy that initially mimics a peripheral nerve disorder.** *Brain* 2006;129:3150–64 [CrossRef Medline](#)
7. Krings T, Geibprasert S. **Spinal dural arteriovenous fistulas.** *AJNR Am J Neuroradiol* 2009;30:639–48 [CrossRef Medline](#)
8. Koch C. **Spinal dural arteriovenous fistula.** *Curr Opin Neurol* 2006;19:69–75 [CrossRef Medline](#)
9. Krings T, Mull M, Gilsbach JM, et al. **Spinal vascular malformations.** *Eur Radiol* 2005;15:267–78 [CrossRef Medline](#)
10. Schaaf TJ, Salzman KL, Stevens EA. **Sacral origin of a spinal dural arteriovenous fistula: case report and review.** *Spine (Phila Pa 1976)* 2002;27:893–97 [CrossRef Medline](#)
11. Nijenhuis RJ, Mull M, Wilmink JT, et al. **MR angiography of the great anterior radiculomedullary artery (Adamkiewicz artery) validated by digital subtraction angiography.** *AJNR Am J Neuroradiol* 2006;27:1565–72 [Medline](#)
12. Nishio A, Ohata K, Takami T, et al. **Atypical spinal dural arteriovenous fistula with supply from the lateral sacral artery.** *J Clin Neurosci* 2007;14:65–68 [CrossRef Medline](#)
13. Jellema K, Canta LR, Tijssen CC, et al. **Spinal dural arteriovenous fistulas: clinical features in 80 patients.** *J Neurol Neurosurg Psychiatry* 2003;74:1438–40 [CrossRef Medline](#)
14. Gilbertson JR, Miller GM, Goldman MS, et al. **Spinal dural arterio-**

- venous fistulas: MR and myelographic findings.** *AJNR Am J Neuroradiol* 1995;16:2049–57 [Medline](#)
15. Koenig E, Thron A, Schrader V, et al. **Spinal arteriovenous malformations and fistulae: clinical, neuroradiological and neurophysiological findings.** *J Neurol* 1989;236:260–66 [CrossRef Medline](#)
 16. Atkinson JL, Miller GM, Krauss WE, et al. **Clinical and radiographic features of dural arteriovenous fistula, a treatable cause of myelopathy.** *Mayo Clin Proc* 2001;76:1120–30 [CrossRef Medline](#)
 17. Schrader V, Koenig E, Thron A, et al. **Neurophysiological characteristics of spinal arteriovenous malformations.** *Electromyogr Clin Neurophysiol* 1989;29:169–77 [Medline](#)
 18. Mull M. **Durchblutungsstörungen des Rückenmarks: neurologische Untersuchungen zur Pathogenese und Strategien der Diagnosesicherung.** Department of Diagnostic and Interventional Neuroradiology, University Hospital Aachen. 2004. https://www.researchgate.net/publication/33987973_Durchblutungsstorungen_des_Ruckenmarks_neuroradiologische_Untersuchungen_zur_Pathogenese_und_Strategien_der_Diagnosesicherung. Accessed 2003
 19. Larsen DW, Halbach VV, Teitelbaum GP, et al. **Spinal dural arteriovenous fistulas supplied by branches of the internal iliac arteries.** *Surg Neurol* 1995;43:35–40; discussion 40–41 [CrossRef Medline](#)
 20. Burguet JL, Dietemann JL, Wackenheim A, et al. **Sacral meningeal arteriovenous fistula fed by branches of the hypogastric arteries and drained through medullary veins.** *Neuroradiology* 1985;27:232–37 [CrossRef Medline](#)
 21. Thron A, Mull M, Reith W. **Spinal arteriovenous malformations** [in German]. *Radiologe* 2001;41:949–54 [CrossRef Medline](#)
 22. Hetts SW, Moftakhar P, English JD, et al. **Spinal dural arteriovenous fistulas and intrathecal venous drainage: correlation between digital subtraction angiography, magnetic resonance imaging, and clinical findings.** *J Neurosurg Spine* 2012;16:433–40 [CrossRef Medline](#)
 23. Chen CJ, Hsu HL. **Engorged and tortuous intradural filum terminale vein as a sign of a sacral dural arteriovenous malformation.** *Eur J Radiol* 2002;44:152–55 [CrossRef Medline](#)
 24. Thron AK. **Applications in spinal dural AV fistulas.** In: *Vascular Anatomy of the Spinal Cord: Radioanatomy as the Key to Diagnosis and Treatment*. 2nd ed. Cham: Springer-Verlag; 2016
 25. Hufmann BC, Gilsbach JM, Thron A. **Spinal dural arteriovenous fistulas: a plea for neurosurgical treatment.** *Acta Neurochir (Wien)* 1995;135:44–51 [CrossRef Medline](#)