



Providing Choice & Value

Generic CT and MRI Contrast Agents



**FRESENIUS
KABI**

CONTACT REP

AJNR

**Sexual Dimorphism and Hemispheric
Asymmetry of Hippocampal Volumetric
Integrity in Normal Aging and Alzheimer
Disease**

B.A. Ardekani, S.A. Hadid, E. Blessing and A.H. Bachman

This information is current as
of July 21, 2025.

AJNR Am J Neuroradiol 2019, 40 (2) 276-282

doi: <https://doi.org/10.3174/ajnr.A5943>

<http://www.ajnr.org/content/40/2/276>

Sexual Dimorphism and Hemispheric Asymmetry of Hippocampal Volumetric Integrity in Normal Aging and Alzheimer Disease

 B.A. Ardekani,  S.A. Hadid,  E. Blessing, and  A.H. Bachman

ABSTRACT

BACKGROUND AND PURPOSE: Asymmetric atrophy of the hippocampus is an important clinical finding in normal aging and Alzheimer disease. In this study, we investigate the associations between the magnitude and asymmetry of hippocampal volumetric integrity and age, sex, and dementia severity.

MATERIALS AND METHODS: We have recently developed a rapid fully automatic algorithm to measure the hippocampal parenchymal fraction, an index of hippocampal volumetric integrity on structural MR imaging of the brain. We applied this algorithm to measure the hippocampal parenchymal fraction bilaterally on 775 MR imaging volumes scanned from 198 volunteers in a publicly available data base. All subjects were right-handed and older than 60 years of age. Subjects were categorized as cognitively healthy ($n = 98$), with mild cognitive impairment ($n = 70$), or with mild/moderate Alzheimer disease ($n = 30$). We used linear mixed-effects models to analyze the hippocampal parenchymal fraction and its asymmetry with respect to age, sex, dementia severity, and intracranial volume.

RESULTS: After controlling for age, sex, and intracranial volume, we found that the magnitude of the hippocampal parenchymal fraction decreased and its asymmetry increased significantly with dementia severity. Also, hippocampal parenchymal fraction asymmetry was significantly higher in men after controlling for all other variables, but there was no sex effect on hippocampal parenchymal fraction magnitude. The magnitude of the hippocampal parenchymal fraction decreased and its asymmetry increased significantly with age in subjects who were cognitively healthy, but associations with age were different in nature in the mild cognitive impairment and Alzheimer disease groups.

CONCLUSIONS: Hippocampal atrophy progresses asymmetrically with age in cognitively healthy subjects. Hippocampal parenchymal fraction asymmetry is significantly higher in men than women and in mild cognitive impairment/Alzheimer disease relative to cognitively healthy individuals.

ABBREVIATIONS: AD = Alzheimer disease; AI = asymmetry index; ART = Automatic Registration Toolbox; CN = cognitively normal; DX = diagnostic group factor; ICV = intracranial volume; HPF = hippocampal parenchymal fraction; LHPF = left HPF; MCI = mild cognitive impairment; RHPF = right HPF

Alzheimer disease (AD) is the most common form of dementia, accounting for 60%–80% of all cases.¹ Age is the greatest risk factor for late-onset AD; and with an aging population, it is projected that the annual number of new AD cases in the United States will double by 2050.¹ There also appears to be a connection between AD and sex because women have an estimated double the

lifetime risk for developing AD,¹ and this cannot be solely explained by their higher average life expectancy of about 5 years.²

The hippocampus is a medial temporal lobe brain structure that plays a decisive role in the formation and retention of episodic memory and, in AD, is one of the first regions of the brain to experience atrophy.³ Structural MR imaging changes in the medial temporal lobe have been detected up to 10 years before clinical manifestations of AD.⁴ It is imperative to accurately characterize the patterns of hippocampal atrophy related to both normal aging and early AD, which would be extremely useful for developing new therapeutic interventions and monitoring disease progression. Numerous studies have shown significant reductions of hippocampal volume in mild cognitive impairment (MCI) and AD.^{5,6} Furthermore, many studies have reported hippocampal volume asymmetry in normal aging, MCI, and AD, with most reporting a right-greater-than-left asymmetry.^{6–10}

Received June 21, 2018; accepted after revision December 9.

From Center for Brain Imaging and Neuromodulation, The Nathan S. Kline Institute for Psychiatric Research (B.A.A., S.A.H., A.H.B.), Orangeburg, New York; and Department of Psychiatry (B.A.A., E.B.), New York University School of Medicine, New York, New York.

Please address correspondence to Babak A. Ardekani, PhD, Center for Brain Imaging and Neuromodulation, The Nathan S. Kline Institute for Psychiatric Research, 140 Old Orangeburg Rd, Orangeburg, NY 10962; e-mail: ardekani@nki.rfmh.org

<http://dx.doi.org/10.3174/ajnr.A5943>

Table 1: Cohort demographics^a

Group	CN	MCI	AD
CDR	0	0.5	1 (<i>n</i> = 28), 2 (<i>n</i> = 2)
No. of subjects	98	70	30
Sex (female:male)	72:26	39:31	20:10
Age (yr)	75.9 ± 9.0 (60–94)	76.2 ± 7.2 (62–92)	78.0 ± 6.9 (65–96)
Education (yr)	14.5 ± 2.9 (8–23)	13.8 ± 3.2 (6–20)	12.8 ± 3.2 (7–20)
ICV (cm ³)	1439 ± 150 (1132–1818)	1485 ± 187 (1171–1992)	1480 ± 118 (1274–1732)
MMSE	29.0 ± 1.2 (25–30)	25.6 ± 3.5 (14–30)	21.2 ± 4.0 (15–29)

Note:—CDR indicates Clinical Dementia Rating; MMSE, Mini-Mental State Examination.

^a Values given are means and range.

However, there have been some discrepancies in the literature over the nature of this putative hippocampal asymmetry. Some studies suggest that the observed asymmetry, at least in part, is due to a visual perception bias if the volumes are manually traced.^{11,12} Left-versus-right bias is also possible in automatic atlas-based hippocampal segmentation methods if care is not taken to ensure that a “sym-metric method” is applied to measuring the bilateral hippocampi.^{8,10}

Sex is an important factor to consider for an accurate study of hippocampal asymmetry. The possibility that sex may determine asymmetry in brain structure and function is supported by known examples, including sex-dependent patterns of regional asymmetry in medial temporal lobe areas^{13,14} and in lateralization of blood oxygen level-dependent fMRI activation in response to emotional¹⁵ and semantic processing tasks.¹⁶ Whether asymmetry in the hippocampus per se is affected by sex is not clear. Most studies do not report any sex-related differences in their measured asymmetries.^{6,8–10} Maller et al⁷ did examine this question but did not find any sex difference in the degree of bilateral hippocampal asymmetry. Lucarelli et al,¹⁷ however, reported that men had greater asymmetry than women. There is also uncertainty as to whether the extent of asymmetry is the same between healthy subjects and MCI and AD groups,⁶ or whether asymmetry increases⁸ or decreases⁹ with increasing disease severity. These findings underline the need to further investigate the relationship among hippocampal asymmetry, sex, and disease severity. An improved understanding of these interactions toward a more precise patient-specific definition of disease-related changes was recently emphasized as a goal of the Alzheimer Precision Medicine Initiative.¹⁸

Hippocampal volume per se is not ideal for characterizing hippocampal degeneration. While atrophy of the hippocampus reduces its volume, the converse is not necessarily true—that is, a small volume does not necessarily indicate abnormality. For example, the raw hippocampal volumes in women are generally smaller than in men but the level of hippocampal atrophy is not different.⁷ Also, normal hippocampal volume is quite variable across subjects and is strongly influenced by intracranial volume (ICV) as a proxy for premorbid brain size.^{7,19,20} Due to these factors, it is difficult to detect subtle differences in hippocampal volume. To overcome this issue, we have recently developed a method to characterize the volumetric integrity of the hippocampus by measuring the hippocampal parenchymal fraction (HPF), an index that attempts to mimic how neuroradiologists visually identify abnormal-appearing hippocampi on MR imaging²¹—that is, when the hippocampal region contains larger-than-expected amounts of CSF.

In both AD²² and in first-episode psychosis,²³ the HPF has been shown to be more sensitive than pure hippocampal volume

in differentiating patients and controls. A cognitively normal (CN) versus early AD classification task using the HPF and its time rate of change achieved an accuracy of 97%.²² The same task using hippocampal volume and its time rate of change obtained from FreeSurfer, Version 5.3 (<http://surfer.nmr.mgh.harvard.edu>)²⁴ achieved a lower accuracy of 89%.²² A group comparison of

healthy controls versus medication-naïve patients with first-episode psychosis showed a significantly lower HPF in first-episode psychosis.²³ However, hippocampal volume in the same subjects as measured by FreeSurfer, Version 6.0, failed to find any group differences.²³ Furthermore, a follow-up scan after 8 weeks of treatment with antipsychotic medication showed a significantly reduced HPF from baseline in first-episode psychosis, whereas FreeSurfer volumes did not detect any longitudinal changes.²³ The HPF has also been found to be a better predictor of future cognitive decline than volume.²⁵

In this article, we measured the bilateral HPF on 3D volumetric MR imaging scans acquired from older adult subjects with and without AD-type dementia obtained through a publicly available data base. We then used linear mixed-effects statistical models to study the relationship between the magnitude and bilateral asymmetry of the HPF with respect to subject age, sex, and dementia severity.

MATERIALS AND METHODS

Study Subjects

We obtained data from the publicly available Open Access Series of Imaging Studies,^{26,27} phase 1 (OASIS1, <http://oasis-brains.org/>), a cross-sectional collection of 416 right-handed subjects 18–96 years of age. In this study, we retained only a subset of 198 subjects who were 60 years of age or older. The 198 older subjects in the OASIS1 data base with and without dementia were recruited from the longitudinal pool of the Washington University Alzheimer’s Disease Research Center. Subjects with a primary cause of dementia unrelated to AD such as vascular dementia, major depression, head injuries, strokes, and the use of psychoactive drugs and those with obvious lesions or other unrelated abnormalities in their MR images were excluded. Cohort demographics are shown in Table 1. Subjects were divided into 3 diagnostic groups: 1) cognitively normal (*n* = 98) with a Clinical Dementia Rating of zero; 2) mild cognitive impairment (*n* = 70) with a Clinical Dementia Rating of 0.5; and 3) AD (*n* = 30), twenty-eight subjects with a Clinical Dementia Rating of 1, and 2 with a Clinical Dementia Rating of 2.

MR Imaging Protocol

For each subject, 3 or 4 (six in 1 subject) individual sagittal 3D-T1-weighted MPRAGE structural MR imaging volumes were acquired in a single acquisition session using a 1.5T Magnetom Vision scanner (Siemens, Erlangen, Germany). The total number of volumes acquired from the 198 subjects in this study was 775. One hundred seventy-eight subjects had 4 volumes each, 19 subjects had 3 volumes each, and 1 subject had 6 volumes. The MPRAGE

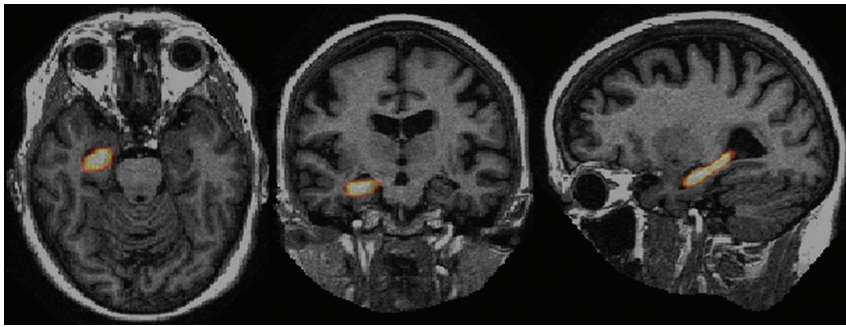


FIG 1. Axial (left), coronal (middle), and sagittal (right) slices through a 3D structural MR imaging scan of a subject. The right hippocampus probabilistic VOI is superimposed on the image in native space.

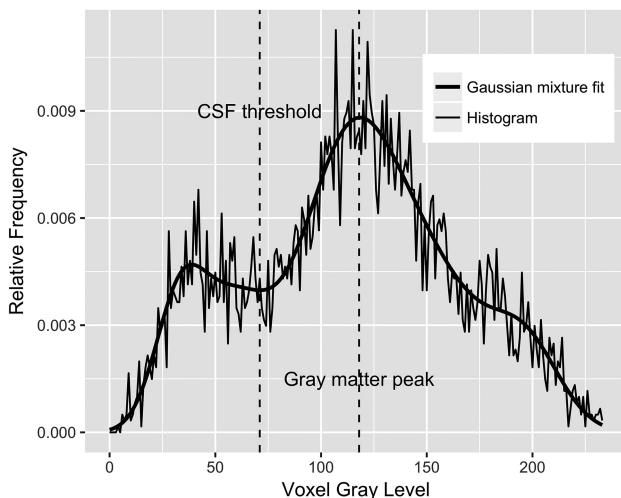


FIG 2. Histogram of the voxels with nonzero probabilities on the VOI in Fig 1 (thin line) along with a fitted Gaussian mixture model (thick line) using the expectation-maximization algorithm. The automatically determined CSF threshold is shown as a vertical line approximately located at the intensity value of 70. The HPF is defined as the fraction of voxels in the VOI whose intensities are greater than the CSF threshold.

pulse sequence parameters were the following: matrix size = $256 \times 256 \times 128$, voxel size = $1 \times 1 \times 1.25 \text{ mm}^3$, TR = 9.7 ms, TE = 4.0 ms, TI = 20 ms, delay time = 200 ms, flip angle = 10° with a zero interslice gap. A more detailed description of image acquisition protocol can be found in Marcus et al.²⁶

Imaging Processing

Image processing was performed using the Automatic Registration Toolbox (ART; <https://www.nitrc.org/projects/art>)²⁸ software package in 2 steps. The 3–4 scans from each subject (6 scans in 1 case) were registered using the Automatic Temporal Registration Algorithm module of ART, an unbiased symmetric rigid-body affine registration algorithm. Registration results were visually inspected for accuracy.

Following intrasubject registration, bilateral HPFs were measured on each of the 775 volumes using the KAIBA module in ART. The HPF estimates the fraction of brain parenchyma in a VOI that is automatically defined around each hippocampus. The VOI is the projection of a hippocampal probability map onto the MR imaging volume in its native orientation based on automatic detection of >100 landmarks near each hippocampus. The prob-

ability map is defined by the average of 65 manually traced hippocampi on a group of young healthy individuals. In a sense, the projection of this hippocampal probability map onto the subject's MR imaging volume indicates the location where one would expect to find the hippocampus in a healthy young individual. Because atrophy of the hippocampus is associated with a commensurate increase in the surrounding CSF, the HPF quantifies the extent to which brain tissue, as opposed to CSF, is found in the VOI. Figure 1 shows the projection of the probabilistic right hippocampal VOI onto the native space of a raw 3D MPRAGE volume.

KAIBA examines the voxel-intensity histogram in the VOI. A Gaussian mixture model is fitted to the histogram using the expectation-maximization algorithm. The fitted mixture model is then analyzed to obtain a CSF threshold as shown in Fig 2. Finally, the HPF is computed as the ratio of the volume of the suprathreshold voxels to the total VOI.

KAIBA is carefully designed to avoid any possible left-right bias in measuring the HPF by computing the bilateral HPF twice, once in the original volume and a second time in a duplicate volume obtained by flipping through the left-right axis and then averaging the measured HPFs for each hemisphere.

On the basis of the measured left HPF (LHPF) and right HPF (RHPF), we computed an overall bilateral measure of hippocampal volumetric integrity as the average:

$$1) \quad HPF = \frac{LHPF + RHPF}{2},$$

and a percentage asymmetry index (AI):

$$2) \quad AI = \frac{|RHPF - LHPF|}{HPF} \times 100\%.$$

As with Lucarelli et al,¹⁷ in this study, the AI measures the magnitude of asymmetry without regard to its direction.

Statistical Analysis

We used the lmer function of the lme4 package (Version 1.1–17; <https://cran.r-project.org/web/packages/lme4/index.html>) in the R statistical computing and graphics language (Version 3.5.0; <http://www.r-project.org>) to fit linear mixed-effects models to the response variables HPF and AI to analyze their relationships to covariates: age, sex, diagnostic group, and estimated total intracranial volume. The significance of the fixed-effects parameters was tested using the ANOVA function of the lmerTest package (Version 3.0–1; <https://cran.r-project.org/web/packages/lmerTest/index.html>) with the Satterthwaite method for computing the denominator degrees of freedom and *F* statistics.

Examination of model residuals following fitting of the mixed-effects models indicated considerable departure from the assumed normality of the residuals. The problem was mitigated by applying the logit transformation (3a) and the Box-Cox transfor-

Table 2: Definitions of all mathematic terms used in the mixed-effects model equation (Equation 4)

i	Volume index $i = 1, 2, \dots, 775$
j	Subject identification index $j = 1, 2, \dots, 198$
y_i	$\text{logit}(HPF)$ or $\text{log}(AI)$ for volume i as the response variable
ID_i	Subject index of volume i where $ID_i \in \{1, 2, \dots, 198\}$
Age_i	Age of subject ID_i minus 76.34, the average age of all 198 subjects
ICV_i	Estimated total intracranial volume of subject ID_i minus 1461.5, the average ICV of all 198 subjects
DX_i	Diagnostic group of subject ID_i , a factor with 3 levels $\{CN, MCI, AD\}$
Sex_i	Sex of subject ID_i , a factor with 2 levels $\{Male, Female\}$
$I\{statement\}$	Indicator function that takes on values of 1 or 0 depending on whether the <i>statement</i> is true or false
$\beta_0 \dots \beta_7$	Model fixed-effects parameters to be estimated and tested against null hypotheses of type $\sum a_k \beta_k = 0$
b_j	Model random effects assumed to be independent and identically distributed Gaussian with mean 0 and variance σ_b^2
e_i	Random residuals assumed to be independent and identically distributed Gaussian with mean 0 and variance σ_e^2

mation²⁹ (3b) to the response variables HPF and AI , respectively, as follows:

$$3A) \quad y = \text{logit}(HPF) = \log\left(\frac{HPF}{1 - HPF}\right)$$

$$3B) \quad y = \text{boxcox}(AI) = \frac{(AI)^\lambda - 1}{\lambda},$$

where the Box-Cox transformation parameter λ in 3b was estimated using the R `boxcoxmix` package (Version 0.20; <https://cran.r-project.org/web/packages/boxcoxmix/boxcoxmix.pdf>) to be $\lambda = 0.4$.

Because we have 775 MR imaging volumes, we denote our response variable by y_i ($i = 1, 2, \dots, 775$), where y_i represents either $\text{logit}(HPF)$ or $\text{boxcox}(AI)$. We fitted the following mixed-effects model:

$$4) \quad y_i = \beta_0 + b_j I\{ID_i = j\} + \beta_1 Age_i + \beta_2 I\{DX_i = MCI\} + \beta_3 I\{DX_i = AD\} + \beta_4 Age_i I\{DX_i = MCI\} + \beta_5 Age_i I\{DX_i = AD\} + \beta_6 ICV_i + \beta_7 I\{Sex_i = Male\} + e_i.$$

This model involves 10 unknown parameters that are estimated. These are the 8 fixed effects, β_0 – β_7 , and 2 variance components σ_b^2 and σ_e^2 associated with random effects b_j and residuals e_i , respectively. In this model, the diagnostic group factor (DX) is a fixed factor with 3 levels, CN , MCI , and AD , indicating the diagnostic group; ID is a random factor with 198 levels $j = 1, 2, \dots, 198$, corresponding to the individual study subjects with b_j as the corresponding random effects. Sex is a fixed factor with 2 levels; and Age and *intracranial volume* (ICV) are continuous mean-centered covariates. The precise definitions of all mathematic terms and notations in Equation 4 are given in Table 2.

RESULTS

Image Processing

The Automatic Temporal Registration Algorithm relies on methods for automatic detection of the midsagittal plane and anterior/posterior commissure. Visual inspection revealed that in 13 of the 775 volumes (1.7%), the midsagittal plane anterior/posterior commissure detection failed. These volumes belonged to 4 different subjects in our cohort of 198 (2%). In the 13 failed cases, we supplied the program with 3 manually identified landmarks on the midsagittal plane, following which the program proceeded to successfully complete the registrations. Following Automatic

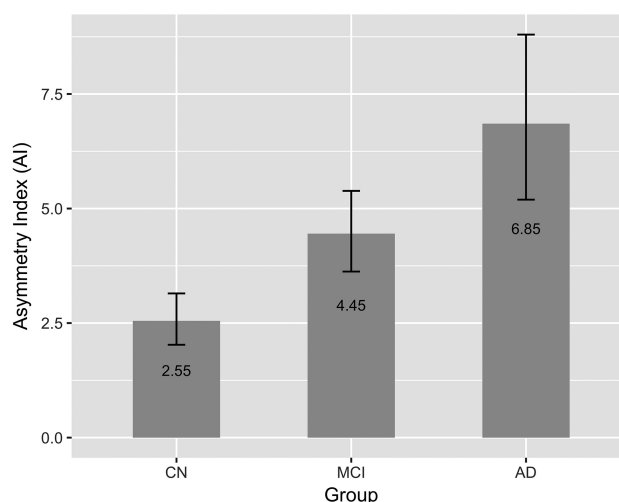


FIG 3. Predicted marginal means of the asymmetry index in different diagnostic groups. AI was found to be significantly different between the CN versus MCI ($P < .001$), CN versus AD ($P < .001$), and MCI versus AD ($P = .03$) groups. AI increased with increasing dementia severity. Error bars indicate 95% CI.

Temporal Registration Algorithm registrations, KAIBA successfully computed LHPF and RHPF on all 775 volumes. All the following statistical results pertain to the transformed response variables HPF and AI using Equations 3a and 3b.

Statistical Analysis of AI

Statistically significant variance in AI was explained by the DX ($P < .001$), Sex ($P < .01$), and ICV ($P = .02$). In addition, there was a significant DX -by- Age interaction ($P < .001$).

AI versus Diagnostic Group

Figure 3 shows the predicted marginal mean and 95% confidence interval of AI in the CN , MCI , and AD groups. Pair-wise comparisons among the 3 diagnostic groups showed a significant increase in asymmetry with dementia severity: CN vs MCI ($P < .001$), CN vs AD ($P < .001$), and MCI vs AD ($P = .03$). The P values are adjusted using the Tukey method for comparing a family of 3 estimates.

AI versus Sex and ICV

Figure 4 shows the predicted marginal mean and 95% CI of AI in men and women. There was a significant main effect of sex on AI as indicated by β_7 in the fitted Equation 4 that was significantly different from zero ($P < .01$), showing higher asymmetry in men.

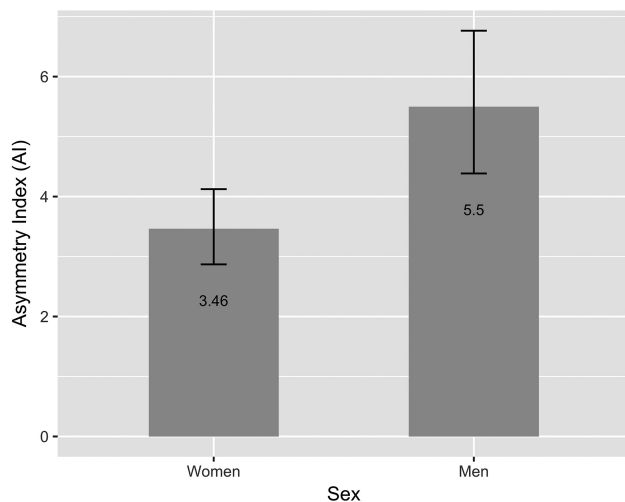


FIG 4. Predicted marginal means of the asymmetry index in men and women. The AI was found to be significantly higher in men ($P < .01$) after controlling for age, intracranial volume, and diagnostic group. Error bars indicate 95% CI.

Our analysis also suggested that asymmetry decreased with increasing ICV as indicated by the significantly negative β_6 ($P = .02$) in the fitted Equation 4.

AI versus Age and Diagnostic Group

Fitting of Equation 4 to AI also revealed significant age-by-diagnosis interactions. In CN, asymmetry increased significantly with age as indicated by a positive β_1 ($P < .001$). However, in the MCI group, asymmetry decreased with age as indicated by a significantly negative linear combination $\beta_1 + \beta_4$ ($P < .05$). Finally, in the AD group, we found no significant age effect on AI by testing the linear combination $\beta_1 + \beta_5$ ($P = .13$).

Statistical Analysis of HPF

Statistically significant variance in the HPF was explained by the DX ($P < .001$), Age ($P < .001$), and ICV ($P = .001$). In addition, there was significant DX-by-Age interaction ($P < .01$).

HPF versus Diagnostic Group

Figure 5 shows the predicted marginal mean and 95% CI of HPF in the CN, MCI, and AD groups. Pair-wise comparisons among the 3 diagnostic groups showed significant decrease in the HPF with dementia severity: CN vs MCI ($P < .001$), CN vs AD ($P < .001$), and MCI vs AD ($P < .001$), in which the P values are adjusted using the Tukey method for comparing a family of 3 estimates.

HPF versus Sex and ICV

There was no significant sex effect on the HPF as indicated by a β_7 estimate, which was not significantly different from zero ($P = .23$). Our analysis showed that the HPF decreased with increasing ICV as indicated by a significantly negative β_6 ($P = .001$).

HPF versus Age and Diagnostic Group

Fitting of Equation 4 to the HPF revealed significant age-by-diagnosis interactions. In the cognitively healthy group, HPF decreased significantly with age as indicated by a negative β_1 ($P < .001$). The HPF also decreased with age in the MCI group as indicated by a significantly negative linear combination $\beta_1 + \beta_4$ ($P < .001$). Finally, in the AD group, we found no significant age effect on the HPF by testing the linear combination $\beta_1 + \beta_5$ ($P = .13$).

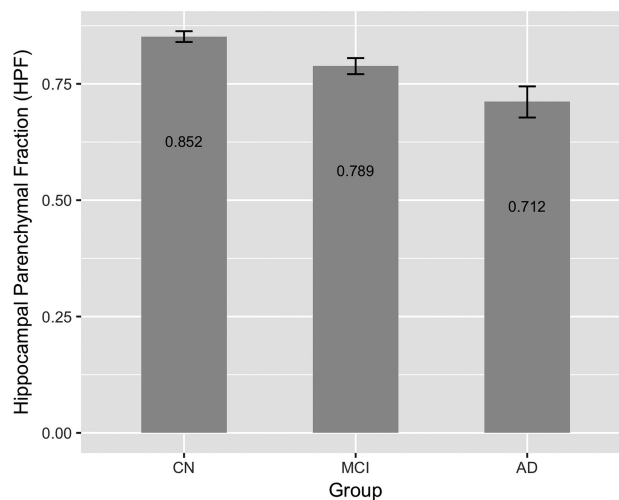


FIG 5. Predicted marginal means of the HPF (averaged across hemispheres) in different diagnostic groups. The HPF was found to be significantly different between the CN versus MCI ($P < .001$), CN versus AD ($P < .001$), and MCI versus AD ($P < .001$) groups. The HPF decreased with increasing dementia severity. Error bars indicate 95% CI.

.001). The HPF also decreased with age in the MCI group as indicated by a significantly negative linear combination $\beta_1 + \beta_4$ ($P < .001$). Finally, in the AD group, we found no significant age effect on the HPF by testing the linear combination $\beta_1 + \beta_5$ ($P = .13$).

DISCUSSION

In this article, we examined the magnitude and asymmetry of hippocampal volumetric integrity in normal aging, MCI, and AD-type dementia based on measurement of the hippocampal parenchymal fraction. We found that the asymmetry of hippocampal atrophy increased with age in subjects who were cognitively normal and it was more asymmetric in men than women (Fig 4). These findings agree with the results of Lucarelli et al,¹⁷ who found that the asymmetry of hippocampal volume increased with age and that men had greater asymmetry than women.

Our findings also concur with the recent longitudinal study by Fraser et al,³⁰ who reported the rate of decline of hippocampal volume measured by very reliable manual tracing by the same highly trained neurologist in 244 middle-aged and 199 older-aged healthy adults based on a pair of baseline and follow-up structural MR images from each individual scanned 8 years apart. They found that the rate of decline of the left hippocampus was higher than that of the right hippocampus in both groups, which indicates increasing AI in normal aging. Sex differences in the rates of decline were not examined.

We also found that both the MCI and AD groups had significantly higher hippocampal asymmetry than the CN group and that the AD group had significantly higher hippocampal asymmetry than the MCI group (Fig 3). Therefore, we conclude that the extent of hippocampal asymmetry as measured by AI is positively correlated with dementia severity. These results are consistent with those of Wachinger et al,⁸ who reported an increase in hippocampal asymmetry concurrent with disease severity beyond an aging effect.

Examining the definition of AI given by Equation 2, we can see

that *AI* can increase with decreasing *HPF* in the denominator or increasing $|RHPF-LHPF|$ in the numerator or both. We have shown in this study that the *HPF* decreases with dementia severity (Fig 5); therefore, the increase in *AI* is, in part, due to decreasing *HPF*. We also examined the relationship between $|RHPF-LHPF|$ and disease severity (results not reported) and determined that this quantity increased significantly in both MCI and AD groups relative to CN. An increase in the mean value of $|RHPF-LHPF|$ itself can be attributed to 2 factors. Assuming that the difference between the right and left *HPF* is normally distributed, the probability distribution of $|RHPF-LHPF|$ would be the so-called folded normal distribution whose expected value depends on both the mean and variance of *RHPF-LHPF*. In other words, the increasing *AI* with disease severity could also be partly due to a larger variance in right-left differences in the MCI/AD groups.

We also found an interaction between age and diagnostic group on asymmetry. While asymmetry increased with age in the group that was cognitively normal, asymmetry was observed to decrease with age in both MCI and AD groups, though the association between age and asymmetry in AD did not reach statistical significance, likely due to the smaller sample size in this group. The finding of a negative correlation between age and asymmetry in the MCI and AD groups indicates that hippocampal asymmetry is higher in those with earlier onset of the disease, suggesting that those who experience earlier onset are more acutely impaired. This finding is consistent with the observation that those with earlier disease onset have a more severe disease course.³¹

Furthermore, we found that the *HPF* decreased significantly from CN to MCI and from MCI to AD (Fig 5). This is consistent with numerous previous publications that report a compromised hippocampal volumetric integrity in AD compared with controls.^{5,6} We also found that the *HPF* significantly decreased with age in both the CN and MCI groups, but the association between the *HPF* and AD did not reach statistical significance. The latter result may be due to the smaller sample size ($n = 30$) in this group; and second, the more advanced dementia in this group means that the compromised hippocampal volumetric integrity is more influenced by the time since dementia onset than by subject age. This finding is consistent with previous reports indicating that the loss of hippocampal volume and changes in shape are more closely related to age in the healthy controls than in patients with dementia.³²

Taken together, our results suggest that decreased magnitude and increased asymmetry of the *HPF* beyond what is expected in normal aging have the potential to be used as early imaging biomarkers of AD. Our results also confirm a sexual dimorphism in asymmetric hippocampal atrophy patterns in both normal aging and AD, with men having significantly more asymmetry.

In this article, we have considered only hippocampal degeneration. Future work is required to determine whether the asymmetric pattern of neurodegeneration is specific to the hippocampus or whether it extends to other brain regions.

We used cross-sectional data in this study and therefore were not able to ascertain the rates of change of *HPF* asymmetry. A future direction of research is to use longitudinal data bases to study dynamic changes in asymmetry in subjects with normal aging and AD. Previously, we used the magnitude of *HPF* and its

rate of change with respect to time as features in machine learning algorithms used for differentiating healthy subjects from those with AD,²² as well as for differentiating stable patients with MCI from those with an incipient AD diagnosis.³³ Future studies will need to be conducted to assess the influence of including *HPF* asymmetry and its rate of change as additional classification features on the performance of machine learning algorithms.

CONCLUSIONS

In this article, we analyzed the hippocampal volumetric integrity as measured by *HPF* and its asymmetry as measured by *AI* with respect to age, sex, and dementia severity. We found that the extent of *HPF* asymmetry is greater in patients with AD than in normally aging subjects and that men had more hippocampal asymmetry than women. We also found that the extent of hippocampal asymmetry is positively correlated with age in cognitively healthy subjects but no statistically significant relationship between *HPF* asymmetry and aging was found within the AD group and that asymmetry diminished with aging within the MCI group. In addition to the level of hippocampal volumetric integrity, its asymmetry can potentially be used as an early biomarker of AD.

REFERENCES

- 2018 Alzheimer's Disease Facts and Figures. <https://www.alz.org/media/HomeOffice/Facts%20and%20Figures/facts-and-figures.pdf>. Accessed June 13, 2018
- Fisher DW, Bennett DA, Dong H. Sexual dimorphism in predisposition to Alzheimer's disease. *Neurobiol Aging* 2018;70:308–24 CrossRef Medline
- Braak H, Braak E. Neuropathological staging of Alzheimer-related changes. *Acta Neuropathol* 1991;82:239–59 CrossRef Medline
- Tondelli M, Wilcock GK, Nichelli P, et al. Structural MRI changes detectable up to ten years before clinical Alzheimer's disease. *Neurobiol Aging* 2012;33:825.e25–36 CrossRef Medline
- Frisoni GB, Fox NC, Jack CR Jr, et al. The clinical use of structural MRI in Alzheimer disease. *Nat Rev Neurol* 2010;6:67–77 CrossRef Medline
- Shi F, Liu B, Zhou Y, et al. Hippocampal volume and asymmetry in mild cognitive impairment and Alzheimer's disease: meta-analyses of MRI studies. *Hippocampus* 2009;19:1055–64 Medline
- Maller JJ, Anstey KJ, Régla-Meslin C, et al. Hippocampus and amygdala volumes in a random community-based sample of 60–64 year olds and their relationship to cognition. *Psychiatry Res* 2007;156:185–97 Medline
- Wachinger C, Salat DH, Weiner M, et al. Whole-brain analysis reveals increased neuroanatomical asymmetries in dementia for hippocampus and amygdala. *Brain* 2016;139:3253–66 CrossRef Medline
- Barnes J, Scallan RI, Schott JM, et al. Does Alzheimer's disease affect hippocampal asymmetry? Evidence from a cross-sectional and longitudinal volumetric MRI study. *Dement Geriatr Cogn Disord* 2005;19:338–44 Medline
- Schmidt MF, Storrs JM, Freeman KB, et al. A comparison of manual tracing and FreeSurfer for estimating hippocampal volume over the adult lifespan. *Hum Brain Mapp* 2018;39:2500–13 CrossRef Medline
- Maltbie E, Bhatt K, Paniagua B, et al. Asymmetric bias in user guided segmentations of brain structures. *Neuroimage* 2012;59:1315–23 CrossRef Medline
- Rogers BP, Sheffield JM, Luksik AS, et al. Systematic error in hippocampal volume asymmetry measurement is minimal with a manual segmentation protocol. *Front Neurosci* 2012;6:179 CrossRef Medline

13. Hamilton LS, Narr KL, Luders E, et al. **Asymmetries of cortical thickness: effects of handedness, sex, and schizophrenia.** *Neuroreport* 2007;18:1427–31 Medline
14. Kong XZ, Mathias SR, Guadalupe T et al; ENIGMA Laterality Working Group. **Mapping cortical brain asymmetry in 17,141 healthy individuals worldwide via the ENIGMA Consortium.** *Proc Natl Acad Sci U S A* 2018;115:E5154–63 CrossRef Medline
15. Schneider S, Peters J, Bromberg U, et al; AGEN consortium. **Boys do it the right way: sex-dependent amygdala lateralization during face processing in adolescents.** *Neuroimage* 2011;56:1847–53 CrossRef Medline
16. Kansaku K, Kitazawa S. **Imaging studies on sex differences in the lateralization of language.** *Neurosci Res* 2001;41:333–37 Medline
17. Lucarelli RT, Peshock RM, McColl R, et al. **MR imaging of hippocampal asymmetry at 3T in a multiethnic, population-based sample: results from the Dallas Heart Study.** *AJNR Am J Neuroradiol* 2013;34:752–57 CrossRef Medline
18. Hampel H, Vergallo A, Giorgi FS, et al; Alzheimer Precision Medicine Initiative (APMI). **Precision medicine and drug development in Alzheimer's disease: the importance of sexual dimorphism and patient stratification.** *Front Neuroendocrinol* 2018;50:31–51 CrossRef Medline
19. Geuze E, Vermetten E, Bremner JD. **MR-based in vivo hippocampal volumetrics, I: review of methodologies currently employed.** *Mol Psychiatry* 2005;10:147–59 Medline
20. Hansen TI, Brezova V, Eikenes L, et al. **How does the accuracy of intracranial volume measurements affect normalized brain volumes? Sample size estimates based on 966 subjects from the HUNT MRI Cohort.** *AJNR Am J Neuroradiol* 2015;36:1450–56 CrossRef Medline
21. Gama HP, da Rocha AJ, Valerio RM, et al. **Hippocampal abnormalities in an MR imaging series of patients with tuberous sclerosis.** *AJNR Am J Neuroradiol* 2010;31:1059–62 CrossRef Medline
22. Ardekani BA, Convit A, Bachman AH. **Analysis of the MIRIAD data shows sex differences in hippocampal atrophy progression.** *J Alzheimers Dis* 2016;50:847–57 CrossRef Medline
23. Goff DC, Zeng B, Ardekani BA, et al. **Association of hippocampal atrophy with duration of untreated psychosis and molecular biomarkers during initial antipsychotic treatment of first-episode psychosis.** *JAMA Psychiatry* 2018;75:370–78 CrossRef Medline
24. Fischl B. **FreeSurfer.** *Neuroimage* 2012;62:774–81 CrossRef Medline
25. Bruno D, Ciarleglio A, Grothe MJ, et al. **Hippocampal volume and integrity as predictors of cognitive decline in intact elderly.** *Neuroreport* 2016;27:869–73 CrossRef Medline
26. Marcus DS, Wang TH, Parker J, et al. **Open Access Series of Imaging Studies (OASIS): cross-sectional MRI data in young, middle aged, nondemented, and demented older adults.** *J Cogn Neurosci* 2007;19:1498–507 Medline
27. OASIS. Open-Access Series Of Imaging Studies. www.oasis-brain-s.org. Accessed April 12, 2018
28. Neuroimaging Tools and Resources Collaboratory. Automatic Registration Toolbox. www.nitrc.org/projects/art. Accessed May 17, 2018
29. Box GEP, Cox DR. **An analysis of transformations.** *Journal of the Royal Statistical Society. Series B (Methodological)* 1964;26:211–52
30. Fraser MA, Shaw ME, Anstey KJ, et al. **Longitudinal assessment of hippocampal atrophy in midlife and early old age: contrasting manual tracing and semi-automated segmentation (FreeSurfer).** *Brain Topogr* 2018;31:949–62 CrossRef Medline
31. Reid W, Broe G, Creasey H, et al. **Age at onset and pattern of neuropsychological impairment in mild early-stage Alzheimer disease: a study of a community-based population.** *Arch Neurol* 1996;53:1056–61 Medline
32. Xu Y, Valentino DJ, Scher AI, et al. **Age effects on hippocampal structural changes in old men: the HAAS.** *Neuroimage* 2008;40:1003–15 Medline
33. Ardekani BA, Bermudez E, Mubeen AM, et al; Alzheimer's Disease Neuroimaging Initiative. **Prediction of incipient Alzheimer's disease dementia in patients with mild cognitive impairment.** *J Alzheimers Dis* 2017;55:269–81 CrossRef Medline