



Get Clarity On Generics

Cost-Effective CT & MRI Contrast Agents



FRESENIUS
KABI

WATCH VIDEO

AJNR

Ascending and Descending Thoracic Vertebral Arteries

P. Gailloud, L. Gregg, M.S. Pearl and D. San Millan

AJNR Am J Neuroradiol 2017, 38 (2) 327-335

doi: <https://doi.org/10.3174/ajnr.A5016>

<http://www.ajnr.org/content/38/2/327>

This information is current as
of August 8, 2025.

Ascending and Descending Thoracic Vertebral Arteries

P. Gailloud, L. Gregg, M.S. Pearl, and D. San Millan



ABSTRACT

SUMMARY: Thoracic vertebral arteries are anastomotic chains similar to cervical vertebral arteries but found at the thoracic level. Descending thoracic vertebral arteries originate from the pretransverse segment of the cervical vertebral artery and curve caudally to pass into the last transverse foramen or the first costotransverse space. Ascending thoracic vertebral arteries originate from the aorta, pass through at least 1 costotransverse space, and continue cranially as the cervical vertebral artery. This report describes the angiographic anatomy and clinical significance of 9 cases of descending and 2 cases of ascending thoracic vertebral arteries. Being located within the upper costotransverse spaces, ascending and descending thoracic vertebral arteries can have important implications during spine interventional or surgical procedures. Because they frequently provide radiculomedullary or bronchial branches, they can also be involved in spinal cord ischemia, supply vascular malformations, or be an elusive source of hemoptysis.

ABBREVIATIONS: ISA = intersegmental artery; SIA = supreme intercostal artery; VA = vertebral artery

The cervical portion of the vertebral artery (VA) is formed by a series of anastomoses established between the first 6 cervical intersegmental arteries (ISAs) and one of the carotid-vertebral anastomoses, the proatlantal artery.^{1–3} The VA is labeled a “post-costal” anastomotic chain (ie, located behind the costal process of cervical vertebrae or dorsal to the rib itself at the thoracic level) to emphasize its location within the transverse foramina. A thoracic VA is a similar postcostal vessel found at the thoracic level.⁴

A thoracic VA was originally defined as a proximal VA branch curving medially and caudally to enter the ipsilateral C7 transverse foramen or first costotransverse space (Fig 1, right).⁵ Atypical forms, common in birds and mammals but rare in humans,^{5,6} include thoracic VAs originating from the supreme intercostal or deep cervical arteries.

Another anastomotic chain found within the upper costotransverse spaces differs from a descending thoracic VA by its caudal origin from a thoracic ISA and its ascending course.⁷ This exceptional variant corresponds to an ascending thoracic VA (Fig 1, left) and should not be confused with variants such as a verte-

bral arteria lusoria^{8–13} or persistent left seventh cervical ISA of aortic origin.¹⁴

This report discusses 9 angiographic observations of descending thoracic VAs and 2 cases of ascending thoracic VAs.

CASE SERIES

Descending Thoracic Vertebral Arteries

Nine typical descending thoracic VAs were documented by DSA in 9 patients between 2006 and 2015 (Table). The variation was unilateral in 8 instances. In 1 patient, a contralateral thoracic VA was documented by CTA only. The bifurcation into the cervical and thoracic VAs was found at C7–T1 (5 instances, 56%) or C6–C7 (4 instances, 44%). The descending thoracic VA was right-sided in 8 cases (89%).

The ISAs provided by the descending thoracic VAs were either complete (ie, including medial, dorsal, and lateral branches) or incomplete, with only the medial branch present; the other branches then came from the supreme intercostal artery (SIA). Most commonly, the descending thoracic VA provided the second (T2) and third (T3) thoracic ISAs completely, as well as 1 or more partial ISA proximally (T1 in 5 cases, C7 and T1 in 1 case). Isolated medial branches were also noted at C7 or T2 (once each). In 2 observations, the descending thoracic VAs were extending out of the FOV after branching off the third thoracic ISA (T3). Descending thoracic VAs branched off important anterior radiculomedullary arteries in 5 instances (56%), 4 times at T2 and once at T1.

Received August 5, 2016; accepted after revision September 23.

From the Division of Interventional Neuroradiology (P.G., L.G., M.S.P., D.S.M.), The Johns Hopkins Hospital, Baltimore, Maryland; and Neuroradiology Unit (D.S.M.), Service of Diagnostic and Interventional Radiology, Sion Hospital, Centre Hospitalier du Valais Romand, Romand, Switzerland.

Please address correspondence to P. Gailloud, MD, Division of Interventional Neuroradiology, The Johns Hopkins Hospital, 1800 E Orleans St, Bloomberg 7218, Baltimore, MD 21287; e-mail: phg@jhmi.edu

<http://dx.doi.org/10.3174/ajnr.A5016>

Case 1. Right descending thoracic VA documented (Fig 2) in a 64-year-old man.

Case 2. Right descending thoracic VA documented in a 67-year-old woman (Fig 3).

Case 3. Bilateral descending thoracic VAs documented in a 59-year-old woman (Fig 4).

Case 4. Right descending thoracic VA documented in 30-year-

old man (Fig 5A, -B). An ipsilateral costocervical angiogram illustrates the characteristics distinguishing a descending thoracic VA from an SIA (Fig 5C, -D).

Case 5. A 47-year-old woman with a right descending thoracic VA branching off the third thoracic ISA as well as a conspicuous bronchial artery (Fig 6).

Ascending Thoracic Vertebral Arteries

Case 1. A 20-year-old man with bullet fragments in the posterior fossa. The right VA injection showed minimal reflux into the left V4 segment, with prompt wash-off indicating the presence of a patent left VA, which was identified as the cranial continuation of the left T2 ISA (Fig 7A, -B). Enlargement of the left T1 and T2 costotransverse spaces was noted (Fig 7C).

Case 2. A 64-year-old man investigated for gait disturbance. A left VA originating from the thoracic aorta and passing through the left T2 and T1 costotransverse spaces (Fig 8A) is identified as a left T2 ISA (Fig 8B).

DISCUSSION

Developmental Anatomy of the VA

His¹⁵ divided the VA into cranial and cervical portions on the basis of their developmental history. Appearing first, the cranial portion principally consists of the proatlantal artery, which is associated with the first cervical nerve. The anterior radiculomedullary branch stemming from the proatlantal artery becomes the distal VA; it divides into ascending and descending rami, which respectively turn into the proximal basilar artery and the vertebral root of the anterior spinal artery.¹⁶⁻¹⁸ The cervical portion of the VA subsequently forms as a succession of anastomoses between the first 6 ISAs, which connect cranially with the proatlantal artery and caudally with the subclavian artery (sixth ISA).² The final configuration of the VA depends on which primitive ISA becomes its adult origin. Most often, the proximal VA, being derived from the sixth cervical ISA, originates from the subclavian artery and enters the C6 transverse foramen. Variations are identified by the level at which they enter the transverse canal rather than by their origin. For example, a VA derived from the seventh cervical ISA always enters the C7 transverse foramen but can arise from the aorta or from the subclavian artery via the SIA.¹⁹

A thoracic VA is an anastomotic chain passing through 1 or more costotransverse space.^{4,19}

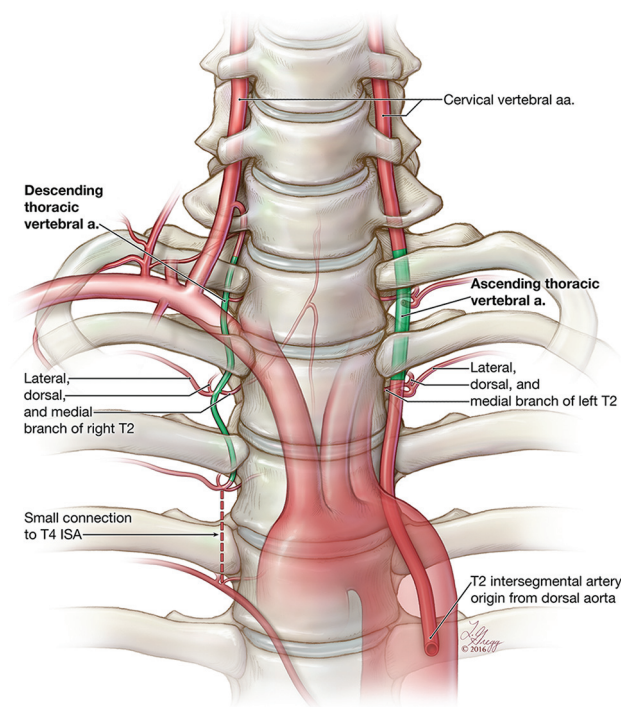


FIG 1. Schematic representation of ascending and descending thoracic vertebral arteries. In its most typical form, a descending thoracic VA (right side) originates from the pretransverse segment (VI) of the cervical VA and curves sharply medially and caudally to enter the last transverse foramen or the first costotransverse space. It then continues caudally, passing through 1 or more costotransverse space, generally branching off a complete set of branches for the second and third thoracic ISAs (T2 and T3) and the medial branch of the first thoracic ISA (T1). In about 50% of cases, a descending thoracic VA provides an important contribution to the spinal cord vascularization. An ascending thoracic VA (left side) is the cranial prolongation of a thoracic ISA, which passes through 1 or more costotransverse space before continuing as a normal cervical VA. Strictly speaking, the thoracic VA segment only corresponds to the portion of the vessel delimited by costotransverse spaces (highlighted in green).

Nine angiographic observations of the descending thoracic vertebral artery

Patient	Sex	Age (yr)	Level	Side	ISA		Branches	
					Complete	Partial	ARMA	Br
1	M	64	C7-T1	R	T2-T3	Medial C7-T1	T2	Yes
2	W	67	C7-T1	R	T2-T4? ^a	Medial T1	T1	No
3	W	59	C6-C7	L	T2-T3	Medial T1	T2	No
4	M	30	C6-C7	R	T2	Medial C7	T2	No
5	W	47	C6-C7	R	T3	Medial T2	—	Yes
6	M	18	C7-T1	R	T2-T3	Medial T1	T2	No
7	W	56	C7-T1	R	T2-T3	Medial T1	—	No
8	W	60	C7-T1	R	T2-T4? ^a	Medial T1	—	No
9	W	31	C6-C7	R	T1-T2	? ^b	—	No

Note:—ARMA indicates anterior radiculomedullary artery; Br, bronchial artery; R, right; L, left; —, none; M, man; W, woman.

^a Question mark indicates that the caudal extension of the descending thoracic VA was beyond the FOV.

^b Question mark indicates that motion artifacts prevented evaluating the presence of a proximal medial branch.

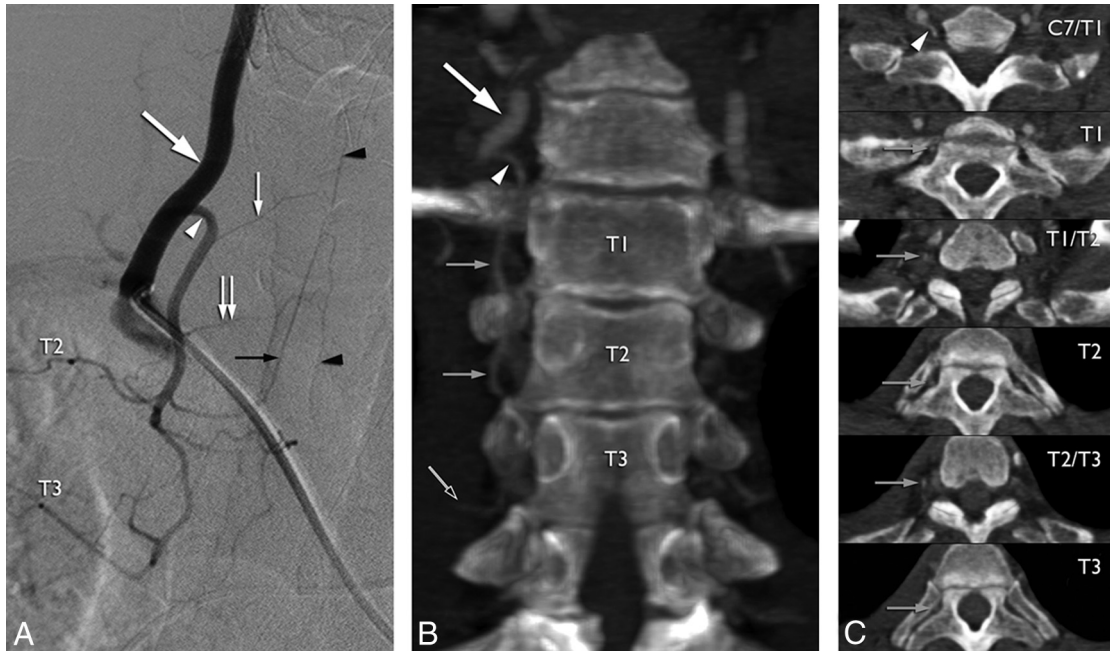


FIG 2. A 64-year-old man with a right descending thoracic vertebral artery. **A**, DSA, right VA injection, posteroanterior projection, shows a VA originating from the subclavian artery and dividing into ascending cervical (*large white arrow*) and descending thoracic (*white arrowhead*) VAs at the C7–T1 level. The descending thoracic VA provides the medial branches of C7 (*small white arrow*) and T1 (*double small white arrow*) and complete sets of branches for the T2 and T3 ISAs. The second thoracic ISA provides a prominent anterior radiculomedullary artery (*small black arrow*), which supplies the anterior spinal artery (*black arrowheads*). **B**, CTA, coronal reconstruction at the level of the transverse foramina. The ascending (*large white arrow*) and descending (*white arrowhead*) branches of the VA are identified. The *small gray arrows* point to the descending thoracic VA down to its termination at T3 (*small black arrow*). **C**, CTA, multilevel axial reconstructions, shows the course of the descending thoracic VA (*small gray arrows*) from its origin at C7–T1 (*white arrowhead*).

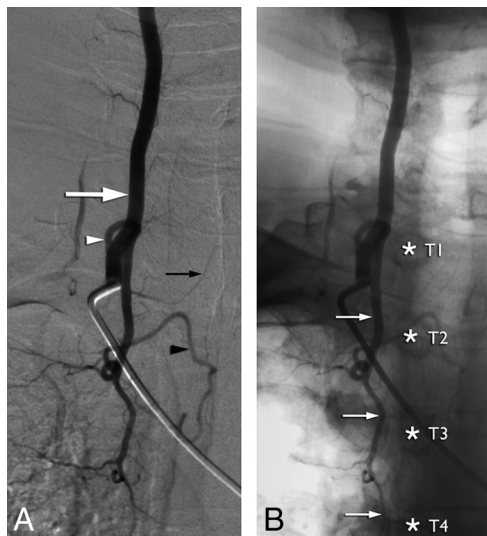


FIG 3. A 67-year-old woman with a right descending thoracic vertebral artery. **A**, DSA, right VA injection, posteroanterior projection. The VA divides into ascending cervical (*large white arrow*) and descending thoracic (*white arrowhead*) VAs at the C7–T1 level. The descending thoracic VA provides the medial branch of T1, which gives off a prominent anterior radiculomedullary artery (*small black arrow*). Note that the descending thoracic VA extends beyond the FOV and may provide additional ISAs. A prominent T2 dorsal (muscular) branch is seen coursing medially and caudally (*black arrowhead*) and should not be confused with a bronchial artery. **B**, DSA, right VA injection, nonsubtracted posteroanterior projection, documents the close relationship between the descending thoracic VA and the cervical pedicles (*asterisks*), notably at the level of the transverse foramina (*small white arrows*).

Walsham⁴ described thoracic VAs in the following manner: “The artery would here appear to be homologous to the vertebral artery in the neck, as both lie between homologous parts, the anterior part of the transverse process of the cervical vertebra being the homolog of the neck and head of the dorsal rib, and the posterior part of the cervical transverse process that of the transverse process of the dorsal vertebra.”

While any postcostal anastomosis established between 2 or more thoracic ISAs answers this definition (eg, a T3–T4 intercostal trunk linked by a postcostal anastomosis), the term “thoracic VA” is generally reserved for variants connected with or continuing as a cervical VA. These variations can be divided into 2 groups with similar developmental mechanisms but different connection patterns: the ascending and descending thoracic VAs. Descending thoracic VAs generally share a common origin with the cervical VA but may also be connected to the SIA or deep cervical artery (atypical forms of Krassnig⁵) (Figs 9 and 10, right).²⁰ An alternate configuration reported by Bühler²¹ consists of a first thoracic ISA originating from the aorta and continuing as a descending thoracic VA to branch off additional ISAs (Fig 10, left).

Ascending thoracic VAs arise from the thoracic aorta and continue cranially as a cervical VA.⁷ A thoracic VA can occasionally show mixed characteristics by connecting both at the cervical and thoracic levels (eg, Walsham’s case⁴).⁷ Dubreuil-Chambardel⁷ reviewed the cases of ascending and descending thoracic vertebral arteries published before 1926.

Two configurations developmentally similar to thoracic VAs must be distinguished from this group of variations because they fail to pass through at least 1 costotransverse space. These include more

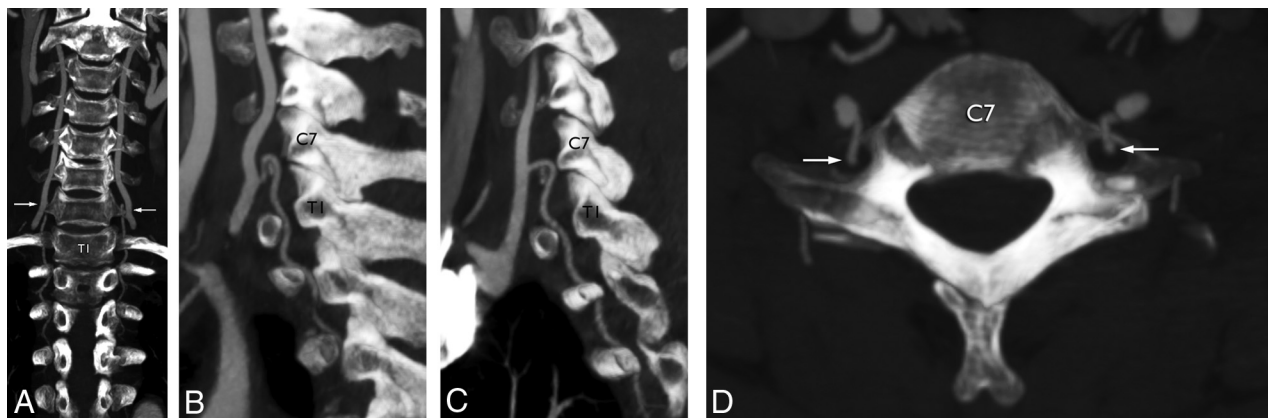


FIG 4. A 59-year-old woman with bilateral descending thoracic vertebral arteries. *A*, CTA, coronal reconstruction at the level of the transverse foramina, documents bilateral and symmetric descending thoracic VAs, both originating at C6–C7 (arrows) and ending at T4 on the right and T3 on the left. *B*, CTA, sagittal reconstruction at the level of the left transverse foramina. Note that the level of the variant (C6–C7) is indicated by its tight curve over the anterior margin of the transverse foramen rather than by the actual level of the bifurcation of the common VA trunk (C7–T1). *C*, CTA, sagittal reconstruction at the level of the right transverse foramina. *D*, CTA, axial reconstruction, shows the sharp posterior turn of the descending thoracic VA to pass through the C7 transverse foramina (white arrows).



FIG 5. A 30-year-old man with a right-sided descending thoracic vertebral artery. *A*, DSA, right VA injection, posteroanterior projection, subtracted view. Note the typical appearance of the descending thoracic VA, which provides, in this case, medial branches for C7 and T1 and a full set of intersegmental branches for T2 (the asterisks indicate the right T1 and T2 pedicles in all images). *B*, DSA, right VA injection, posteroanterior projection, nonsubtracted view. *C*, DSA, right costocervical trunk injection, posteroanterior projection, subtracted view. The existence of a supreme intercostal artery (white arrowhead) is independent of the presence of a descending thoracic VA. In this case, the supreme intercostal artery provides the C7 ISA (arrowhead) and the lateral branch of the T1 ISA (black arrow). *D*, DSA, right costocervical trunk injection, nonsubtracted posteroanterior projection. Contrary to a descending thoracic VA, the supreme intercostal artery lies away from the vertebral pedicles (hence outside the costotransverse spaces).

cranially bifurcating trunks with a descending branch that remains within the cervical region (Fig 11A) and VAs of aortic origin entering the seventh transverse foramen (Fig 11B). The latter corresponds to persistent seventh cervical ISAs; their aortic origin remains close to the left subclavian artery.¹⁴ A vertebral arteria lusoria⁸ (ie, a right VA originating distal to the left subclavian artery) also known as a “distal aortic origin of the VA” or “fourth branch of the aortic arch,”^{9–13} must be distinguished from a thoracic VA as well (though a vertebral arteria lusoria of low origin with a thoracic component is conceivable but, to our knowledge, not reported).

Descending Thoracic Vertebral Arteries

The first case of a descending thoracic VA known to the authors was reported by Quain in 1844 (Fig 12).²² Pensa²³ confirmed the

observation of Quain in 1905 and documented the concomitant existence of thoracic VAs and SIAs (Fig 13). Approximately 70 years later, Newton and Mani²⁴ offered the first angiographic documentation of a descending thoracic VA (labeled as a “vertebral origin of the SIA”), while Chiras et al²⁵ published a correctly identified bilateral observation in 1982.

It is important to distinguish descending thoracic VAs from SIAs (both are usually present simultaneously¹⁹). A major difference is topographic in nature: A thoracic VA is a postcostal vessel passing through costotransverse spaces, while an SIA is a precostal vessel lying in a more lateral position (Figs 1 and 5). Other variations that should not be confused with a descending thoracic VA include VAs originating from the SIA via the seventh cervical ISA (which is often mislabeled as an SIA or costocervical trunk origi-

nating from the VA) (Fig 14) and aberrant bronchial arteries arising from the proximal VA (Fig 15). On the other hand, a VA originating from the SIA via a thoracic ISA (eg, T1 or T2) and entering the first or second costotransverse space would represent an atypical form of an ascending thoracic VA.

Note that in Pensa's illustration,²³ the descending thoracic VA does not give off the lateral branch of T1 (Fig 8). This observation

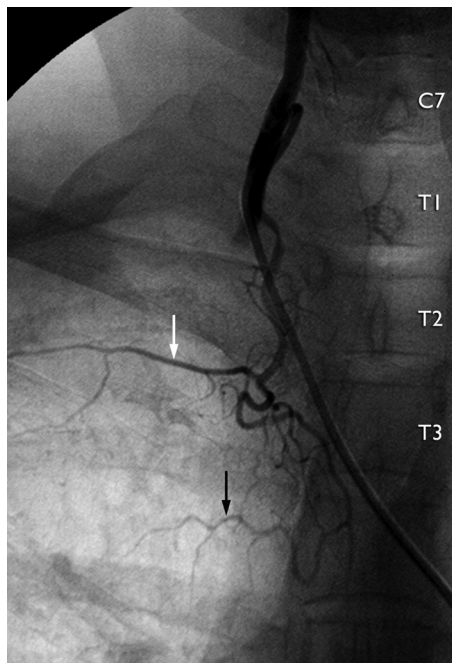


FIG 6. A 47-year-old woman with a right descending thoracic VA. This typical descending thoracic VA provides, in addition to the second thoracic ISA (white arrow), a prominent bronchial artery (black arrow).

is consistent with our findings: In all except 1 case, the descending thoracic VA branched off at least 1 incomplete proximal ISA, most commonly T1. Adachi et al¹⁹ reported 4 observations of right-sided descending thoracic VAs entering the seventh transverse foramen, all coursing down through the first 3 costotransverse spaces, as in the current report.

The prevalence of descending thoracic VAs may be approximated by considering that 9 cases were documented at our institution (Division of Interventional Neuroradiology, The Johns Hopkins Hospital) during a 5-year period, with an average caseload of approximately 300 diagnostic angiograms per year, hence a prevalence of about 0.6%.

Ascending Thoracic Vertebral Artery

While Adachi et al¹⁹ recorded the existence of ascending thoracic VAs in his anatomic material (Fig 16), no angiographic observation has, to our knowledge, been published so far. In one of our patients with suspected VA dissection, the left VA was found to originate from the second left thoracic ISA (T2). Enlarged left costotransverse spaces at T1 and T2 consistent with the passage of a left ascending thoracic VA were visible on a chest CT. Our second observation was incidental.

Comparative Anatomy

The existence of animal species with vascular configurations matching human anatomic variants helps authenticate these variations and understand their development.²⁶ Pensa²³ published 2 avian examples of adult anatomy respectively equivalent to typical ascending and descending thoracic VAs in the chicken and the pigeon (Fig 17), while descending thoracic VAs of costocervical origin (atypical form of Krassnig⁵) seem constant in dogs.⁶

Comparative data may also predict variations not yet documented in humans. For example, all 7 pairs of intercostal arteries

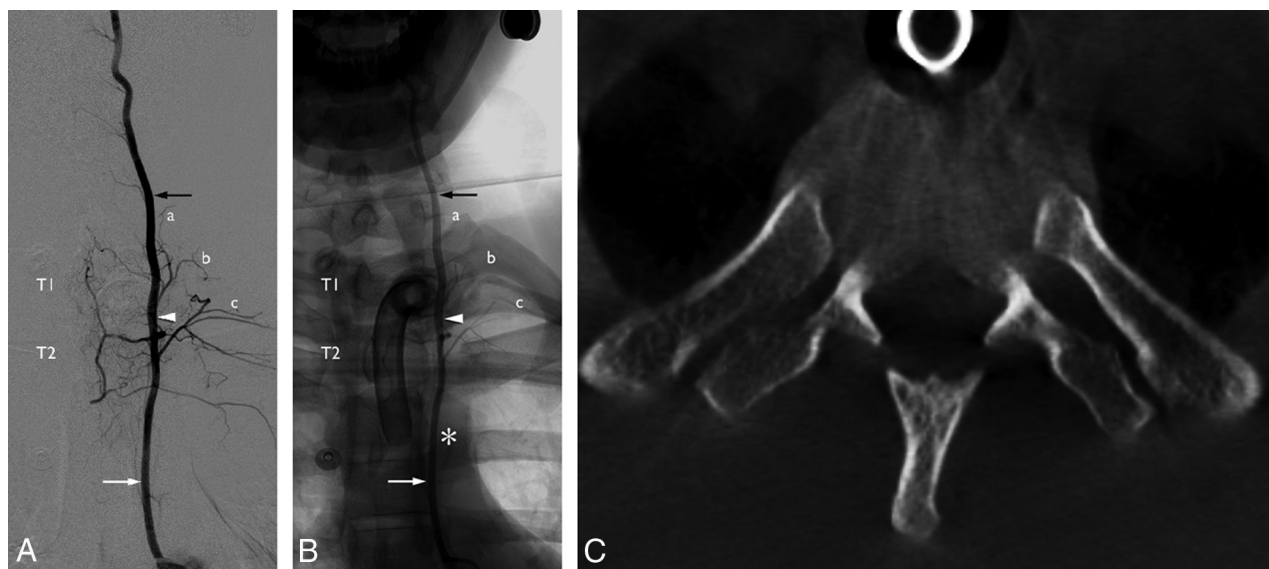


FIG 7. A 20-year-old man with a left ascending thoracic VA. A, DSA, left T2 ISA injection, posteroanterior projection, subtracted view. The T2 ISA (white arrow) provides the second intercostal artery (c) before crossing through the T2 costotransverse space (white arrowhead). It then branches off contributions for the T1 (b) and C7 (a) ISAs and continues cranially as the cervical VA (black arrow). B, DSA, left T2 ISA injection, posteroanterior projection, nonsubtracted view. The asterisk indicates the approximate level of the origin of the left subclavian artery from the aortic arch, illustrating the distance separating the latter from the left T2 ostium. C, CT, axial view at the T2 level, shows a marked asymmetry of the size of the T2 costotransverse spaces. This sign should be taken into consideration when planning an upper thoracic spine procedure—for example, when choosing a needle path for a vertebral biopsy or a vertebroplasty.



FIG 8. A 64-year-old man with a left ascending thoracic VA. A, CTA, coronal MIP reconstruction, shows the origin of the left T2 ISA (white arrow) and its passage through the T2 and T1 costotransverse spaces. The vessel then continues cranially as the cervical VA. B, CTA, oblique MIP reconstruction, documents the T2 posterior intercostal artery (arrowhead), therefore identifying the ascending thoracic VA as being derived from the second thoracic ISA (arrow).

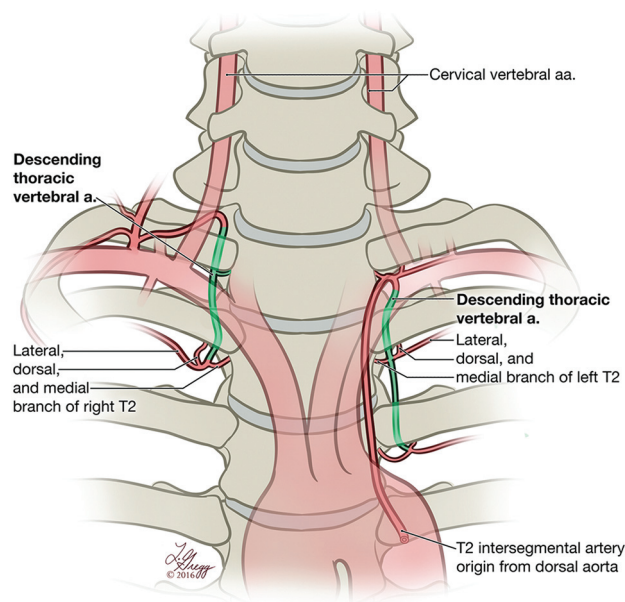


FIG 10. Schematic representation of 2 types of descending thoracic VA variants. The descending thoracic VA (atypical form of Krassnig²³) depicted on the right side is, as in Fig 9, connected with the supreme intercostal artery rather than the cervical VA. In the configuration shown on the left side (atypical form of Bühler²¹), the descending thoracic VA is the downward continuation of a thoracic ISA of aortic origin. a. indicates artery.

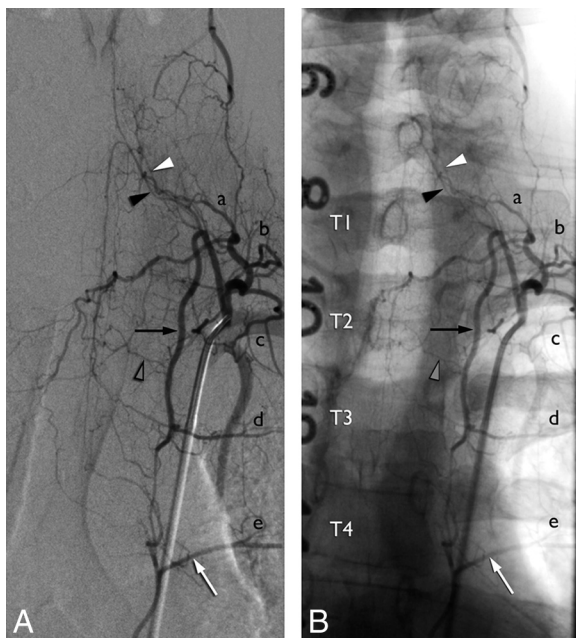


FIG 9. A 31-year-old woman with an atypical descending thoracic VA. A, DSA, left supreme intercostal artery injection, posteroanterior projection, subtracted view shows an example of a descending thoracic VA originating from the supreme intercostal artery (atypical form of Krassnig); in this case, there is no connection with the cervical VA. The supreme intercostal artery provides the C7 (a) and T1 (b) ISAs as well as the lateral branch of the T2 ISA (c). A prominent ascending branch curves sharply downward to enter the first costotransverse space and continues caudally as a descending thoracic VA (black arrow) passing through the T2 and T3 costotransverse spaces. This descending thoracic VA provides the T3 ISA (d) and the medial branch of the T2 ISA (gray arrowhead). Note the opacification of the T4 ISA (e) via a small paravertebral anastomotic connection (as shown in Fig 1, right side). The C7 ISA provides both an anterior (black arrowhead) and a posterior (white arrowhead) radiculomedullary artery. B, DSA, left supreme intercostal artery injection, posteroanterior projection, nonsubtracted view of same image.

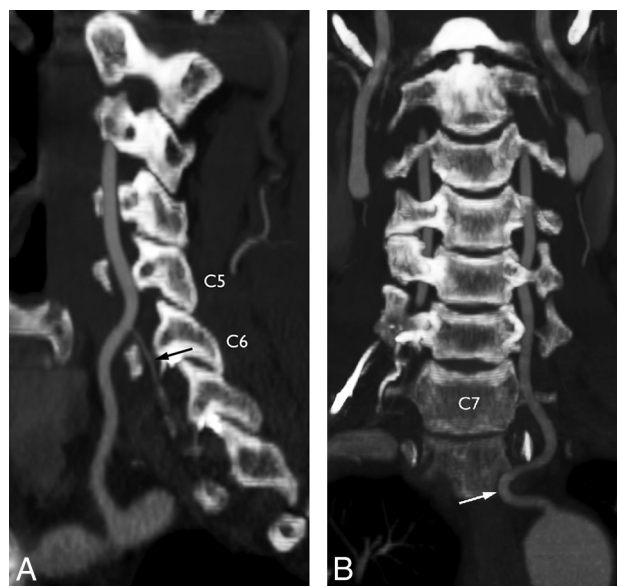


FIG 11. Examples of vertebral configurations similar to but distinct from thoracic VAs. A, CTA, sagittal MIP reconstruction. This case shows a descending branch with an appearance similar to that of a descending thoracic VA (arrow). However, the bifurcation is located at C5–C6, and the descending branch stops at C7, short of the first costotransverse space. There is, therefore, no thoracic segment. B, CTA, coronal MIP reconstruction, shows a vertebral artery originating from the aorta distal to the subclavian artery and entering the seventh transverse foramen (arrow). This vessel corresponds to a persistent seventh ISA and has no thoracic component.

in the European pond turtle are branches of an anastomotic chain similar in nature to a VA,²³ an observation suggesting that such extensive longitudinal vertebral chains may, as extreme variants, exist in humans as well.

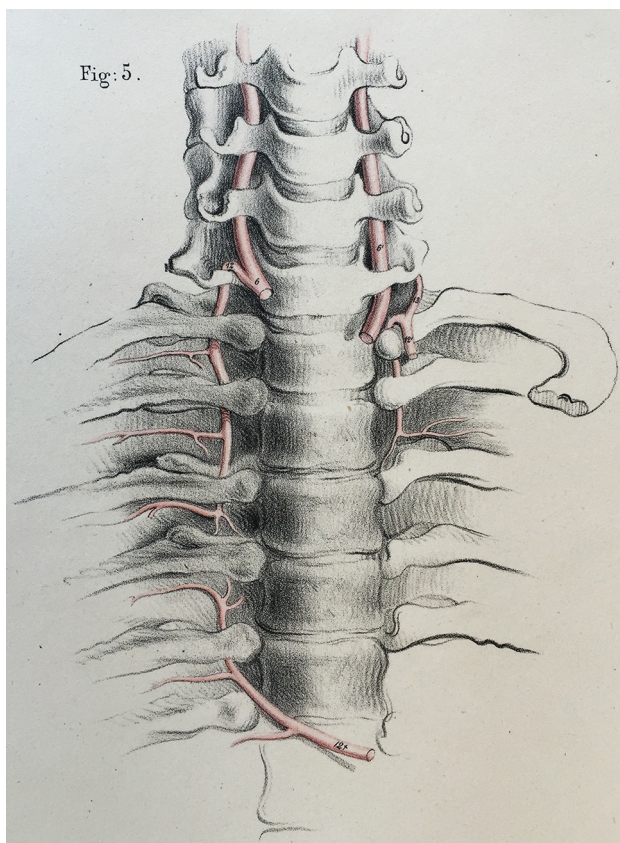


FIG 12. First known representation of a descending thoracic vertebral artery by Joseph Maclise for Richard Quain in 1844 (Fig 5, Plate XXII).²² The figure accurately depicts a typical descending thoracic VA on the right side (12) and an atypical form on the left (12'), as later defined by Krassnig.⁵ While both vessels are clearly coursing within the costotransverse spaces, the distinction from the supreme (or superior) intercostal arteries has not yet been established. The original legend is the following: "The left vertebral enters the last cervical vertebra. On the right side the superior intercostal artery is derived from the vertebral, and passes downwards into the thorax through the foramen in the transverse process of the seventh cervical vertebra, and afterward between the necks of the ribs and the corresponding transverse processes of the dorsal vertebræ. It will be observed that the superior intercostal of the other side descends also between the ribs and the processes of the vertebræ; and that the first aortic intercostal branch occupies a similar position in reference to the bones." 6 indicates right vertebral, 6', left vertebral; 12, right superior intercostal; 12', left superior intercostal; 12†, first aortic intercostal; 13, deep cervical (arteria profunda cervicis).

Clinical Relevance

Spine surgeons and interventionists must be aware of the existence of thoracic VAs because their injury during a vertebral procedure may prove significant, notably in cases of ascending thoracic VAs supplying the posterior fossa. One or more abnormally conspicuous costotransverse space may be the only sign indicating the presence of such a variant on preoperative imaging (Fig 7C).

These variants also have a significant angiographic importance. Thoracic VAs may, through one of their frequent radiculomedullary branches, supply a spinal vascular malformation or be involved in the development of spinal cord ischemia. Similarly, because ascending thoracic VAs participate in the vascularization of the posterior fossa, they may play a role in vertebrobasilar in-

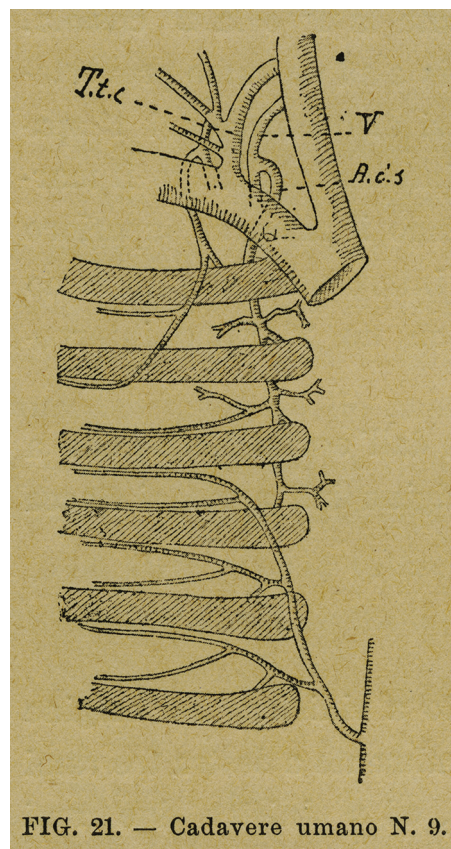


FIG 13. Reproduction of the original Fig 21 of Pensa,²³ showing an example of a typical descending thoracic VA providing T1 partially and T2 entirely. The supreme intercostal artery (originating from an unlabeled costocervical trunk) is clearly distinguished from the thoracic VA, both in the illustration and in the Pensa's text, the latter emphasizing the respective precostal and retrocostal locations of the 2 vessels. However, the nomenclature remains uncertain; Pensa labeled the descending thoracic VA as an arteria intercostalis suprema (A.i.s). V indicates vertebral artery; T.t.c., thyrocervical trunk.

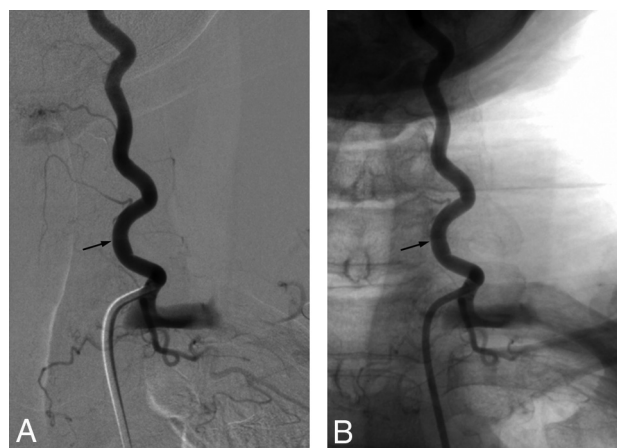


FIG 14. Vertebral artery variant in a 55-year-old woman. This left vertebral injection (posteroanterior projection, subtracted, A, and nonsubtracted, B, images) documents a vertebral artery that originates from the supreme intercostal artery (ie, a persistent seventh ISA) and enters the transverse canal at C7 (arrow). Because the vertebral artery becomes dominant in the adult stage, it falsely suggests an opposite relationship (ie, a supreme intercostal artery of vertebral origin).



FIG 15. Vertebral artery variant in a 58-year-old woman. Left vertebral injection (posteroanterior projection) documents a prominent aberrant bronchial branch (arrow) of vertebral origin.

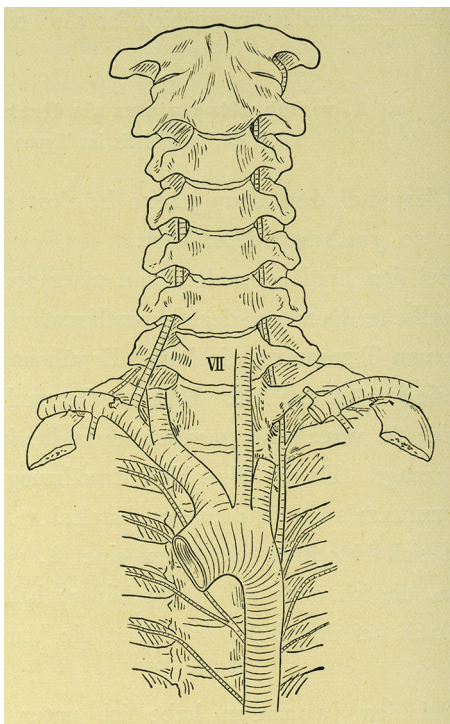


FIG 16. Reproduction of the original Fig 16 (Vol. 1, page 36) of Adachi.¹⁹ Adachi presents a left ascending thoracic VA originating from the aorta at the T3–T4 level and passing behind the head of the first rib to enter the first costotransverse space before continuing cranially as the left cervical vertebral artery.

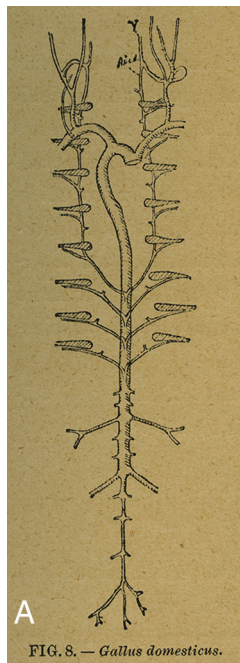


FIG. 8. — *Gallus domesticus*.

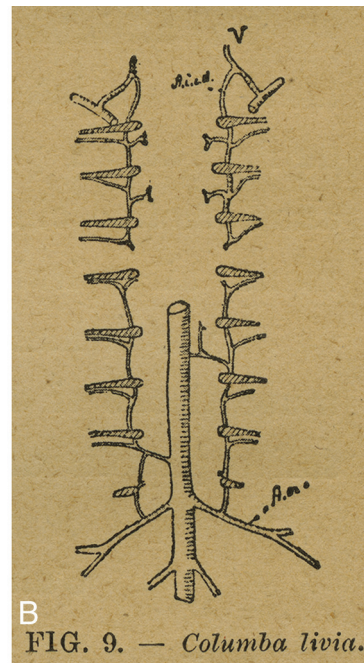


FIG. 9. — *Columba livia*.

FIG 17. Examples of ascending and descending thoracic aortas in birds (from Pensa²³). A, Bilateral ascending thoracic vertebral arteries in the chicken (*Gallus domesticus*); note a cranial anastomosis with the costocervical trunk. B, Bilateral descending thoracic vertebral arteries in the domestic pigeon (*Columba livia*). V indicates vertebral artery; A.i.c.d., arteria intercostalis communis descendens; A.cr., arteria cruralis.

sufficiency or supply an intracranial aneurysm or vascular malformation. They can also represent a source of embolic material, either of atheromatous or iatrogenic origin.

Finally, the possibility that a descending thoracic VA can contribute to the bronchial vascularization must be kept in mind when investigating a hemoptysis of elusive origin.

In summary, thoracic VAs are anastomotic chains similar to normal cervical VAs but extending through at least 1 costotransverse space. They can be divided into ascending and descending types that differ by their origin, course, and clinical implications.

Disclosures: Philippe Gailloud—UNRELATED: Grants/Grants Pending: Siemens*; Consultancy: Codman Neurovascular. Monica S. Pearl—UNRELATED: Grants/Grants Pending: National Institutes of Health.* *Money paid to the institution.

REFERENCES

1. Padgett DH. Designation of the embryonic intersegmental arteries in reference to the vertebral artery and subclavian stem. *Anat Rec* 1954;119:349–56 Medline
2. Hochstetter F. Über die Entwicklung der A. Vertebralis beim Kaninchen, nebst Bemerkungen über die Entstehung des Ansa Vieussenii. *Morphol Jahrb* 1890;16:572–86
3. Schmeidel G. Die Entwicklung der Arteria vertebralis des Menschen. *Morphol Jahrb* 1933;71:315–435
4. Walsham WJ. Abnormal origin and distribution of the upper seven right intercostal arteries, with remarks. *J Anat Physiol* 1882;16: 441–62 Medline
5. Krassnig M. Von der Arteria vertebralis thoracica der Säuger und Vögel. *Beiträge und Referate zur Anatomie und Entwicklungsgeschichte* 1913;49:523–609 CrossRef
6. Wenthe M, Waibl H, Meyer W. Some observations on the arteria vertebralis thoracica in the dog. *Kasetsart Veterinarians* 2009;19:65–69

7. Dubreuil-Chambardel L. *Traité des Variations du Système Artériel: Variations des Artères du Membre Supérieur*. Paris: Masson et Cie; 1926:37–44
8. Lacout A, Khalil A, Figl A, et al. **Vertebral arteria lusoria: a life-threatening condition for oesophageal surgery**. *Surg Radiol Anat* 2012;34:381–83 [CrossRef Medline](#)
9. Higashi N, Shimada H, Simamura E, et al. **Right vertebral artery as the fourth branch of the aortic arch**. *Anat Sci Int* 2008;83:314–18 [CrossRef Medline](#)
10. Lemke AJ, Benndorf G, Liebig T, et al. **Anomalous origin of the right vertebral artery: review of the literature and case report of right vertebral artery origin distal to the left subclavian artery**. *AJNR Am J Neuroradiol* 1999;20:1318–21 [Medline](#)
11. Sakamoto H. **A case of the right vertebral artery as the last branch of the aortic arch (author's transl)** [in Japanese]. *Kaibogaku Zasshi* 1980;55:503–08 [Medline](#)
12. Mukkannavar SB, Kuthe SA, Mishra AK, et al. **Aberrant right vertebral artery from descending thoracic aorta**. *Ann Thorac Surg* 2013; 96:1074–76 [CrossRef Medline](#)
13. Hsu DP, Alexander AD, Gilkeson RC. **Anomalous vertebral artery origins: the first and second reports of two variants**. *J Neurointerv Surg* 2010;2:160–62 [CrossRef Medline](#)
14. Koenigsberg RA, Pereira L, Nair B, et al. **Unusual vertebral artery origins: examples and related pathology**. *Catheter Cardiovasc Interv* 2003;59:244–50 [CrossRef Medline](#)
15. His W. *Anatomie Menschlicher Embryonen, III: Zur Geschichte der Organe*. Leipzig: Verlag von F.C.W. Vogel; 1885:193
16. Kadyi H. *Über die Blutgefäße des Menschlichen Rückenmarkes*. Lemberg: Gubrynowicz & Schmidt; 1889:26
17. Charpy A. *Système Nerveux*. Paris: Masson et Cie; 1902
18. Kappers A, Strasburger EH, Addens JL. *Anatomie Comparée du Système Nerveux*. Harleem: Bohn; 1947:532
19. Adachi B. *Das Arteriensystem der Japaner*. Kyoto: Kaiserlich-japanische Universität zu Kyoto, in kommission bei “Maruzen Co.”; 1928: 33–36, 191–92
20. Barkow HC. *Die Angiologische Sammlung im Anatomischen Museum der Königlichen Universität zu Breslau*. Breslau: Hirt; 1869:XL–LI
21. Bühler A. **Varietät der ersten fünf intercostalarterien**. *Gegenbaurs Morphologisches Jahrbuch* 1904;32:189–94
22. Quain R, MacLise J. *The Anatomy of the Arteries of the Human Body, with its Applications to Pathology and Operative Surgery: In Lithographic Drawings with Practical Commentaries*. London: Taylor and Walton; 1844:142 (Plate 22)
23. Pensa A. **Studio sulla morfologia e sullo sviluppo della arteria intercostalis suprema e delle aa. intercostales**. *Ricer Lab Anat Univ Roma* 1905;11:33–142
24. Newton T, Mani R. **The vertebral artery**. In: Newton T, Potts D, eds. *Radiology of the Skull and Brain: Angiography*. Vol 2. Book 2. St. Louis: Mosby; 1974:1659–709
25. Chiras J, Launay M, Gaston A, et al. **Thoracic vertebral artery: an anomaly of the vertebral artery**. *Neuroradiology* 1982;24:67–70 [CrossRef Medline](#)
26. Bremer JL. **The origin of the renal artery in mammals and its anomalies**. *Am J Anat* 1915;18:179–200 [CrossRef](#)