



Providing Choice & Value

Generic CT and MRI Contrast Agents



**FRESENIUS
KABI**

CONTACT REP

AJNR

**The Use and Utility of Aspiration
Thrombectomy in Acute Ischemic Stroke: A
Systematic Review and Meta-Analysis**

D. Wei, J.R. Mascitelli, D.A. Nistal, C.P. Kellner, J.T. Fifi,
J.D. Mocco and R.A. De Leacy

This information is current as
of July 29, 2025.

AJNR Am J Neuroradiol 2017, 38 (10) 1978-1983

doi: <https://doi.org/10.3174/ajnr.A5309>

<http://www.ajnr.org/content/38/10/1978>

The Use and Utility of Aspiration Thrombectomy in Acute Ischemic Stroke: A Systematic Review and Meta-Analysis

 D. Wei,  J.R. Mascitelli,  D.A. Nistal,  C.P. Kellner,  J.T. Fifi,  J.D. Mocco, and  R.A. De Leacy



ABSTRACT

BACKGROUND: Thrombectomy trials are often specifically interpreted as evidence for the effectiveness of stent retrievers. The effectiveness of other thrombectomy techniques such as aspiration thrombectomy should be validated through further investigation and review.

PURPOSE: To evaluate published treatment times and clinical outcomes in patients treated with aspiration thrombectomy or ADAPT (A Direct Aspiration, First Pass Technique) for acute ischemic stroke.

DATA SOURCES: A systematic literature review was performed following Preferred Reporting Items for Systematic Reviews and Meta-Analyses (PRISMA) guidelines. MEDLINE, Scopus, and the Cochrane trial register were searched on November 8, 2016.

STUDY SELECTION: Twenty studies ($n = 1523$ patients) were included in this review and meta-analysis. One of these studies was prospective, and the rest were retrospective.

DATA ANALYSIS: Meta-analysis was performed by using a random effects model. Data and publication bias were visualized with forest plots and funnel plots.

DATA SYNTHESIS: Five studies investigated aspiration thrombectomy only, and 16 studies investigated ADAPT. Of the 16 studies on ADAPT, the rate of successful recanalization (TICI 2b/3) was 89.3% (95% CI, 85.4%–92.3%). The proportion of patients with good clinical outcome (90-day mRS ≤ 2) was 52.7% (95% CI, 48.0%–57.4%).

LIMITATIONS: Studies on ADAPT were retrospective, and there was heterogeneity between studies for successful recanalization ($P < .001$) and good clinical outcome ($P < .001$). There was evidence of publication bias for recanalization rates ($P = .01$), but not for clinical outcomes ($P = .42$).

CONCLUSIONS: ADAPT and aspiration thrombectomy are effective approaches to thrombectomy, with high recanalization rates and excellent clinical outcomes reported in the literature. Aspiration thrombectomy is a promising neurointervention, but large prospective randomized studies are needed to validate its utility.

ABBREVIATION: ADAPT = A Direct Aspiration, First Pass Technique

Endovascular therapy has recently been shown to be an effective intervention and is now the standard of care for acute ischemic stroke.^{1–5} Broadly, there are 2 categories of techniques in endo-

vascular treatment for stroke: 1) stent-based thrombectomy using retrievable stents with or without aspiration catheter and 2) aspiration thrombectomy using aspiration catheter alone. A Direct Aspiration, First Pass Technique (ADAPT) describes using aspiration thrombectomy as the first-line treatment with the possibility of adjuvant treatment if recanalization is not initially achieved. ADAPT is a commonly used thrombectomy technique among neurointerventionalists, but its effectiveness relative to stent-based thrombectomy has not been established.

Five randomized controlled clinical trials in 2015 (MR CLEAN, ESCAPE, REVASCAT, SWIFT PRIME, and EXTEND IA) demonstrated that thrombectomy is superior to intravenous alteplase for stroke caused by large vessel occlusions.^{1–5}

Received March 7, 2017; accepted after revision May 24.

From the Departments of Neurosurgery (D.W., J.R.M., D.A.N., C.P.K., J.T.F., J.D.M., R.A.D.L.), Neurology (J.T.F.), and Radiology (R.A.D.L.), Mount Sinai Health System, New York, New York.

Please address correspondence to Reade A. De Leacy, MD, Department of Neurosurgery, Mount Sinai Health System, 1450 Madison Ave, Klingenstein Clinical Center, 1-North, New York, NY 10029; e-mail: reade.deleacy@mountsinai.org; @rdeleacymd



Indicates article with supplemental on-line tables.



Indicates article with supplemental on-line photos.

<http://dx.doi.org/10.3174/ajnr.A5309>

Thrombectomy was specifically limited to stent retrievers in some protocols and was the first-line treatment for most patients in these trials. These trials are often specifically interpreted as evidence for the effectiveness of stent retrievers. The effectiveness of other thrombectomy techniques such as aspiration thrombectomy should be validated through further investigation and review.

In this systematic review, we evaluated the effectiveness of aspiration alone and ADAPT and reviewed their advantages and disadvantages relative to stent-based thrombectomy. We also compared treatment times and clinical outcomes for patients treated with aspiration thrombectomy alone and patients who required further treatment with stent retriever.

METHODS

Literature Search and Study Categorization

This review was conducted in accordance with PRISMA (Preferred Reporting Items for Systematic Reviews and Meta-Analyses) guidelines.⁶ A systematic review was performed on November 8, 2016 by using MEDLINE, Scopus, and the Cochrane trial register data bases. The search term was “(aspiration OR suction) AND stroke AND (thrombectomy OR endovascular OR neurointervention).” Duplicates were removed from records identified in the data base search. Articles were then screened based on title and abstract. The remaining papers underwent full-text review. Inclusion criteria were 1) the study must contain at least 20 patients treated with ADAPT or aspiration thrombectomy for acute ischemic stroke; 2) the study must include either a measure of treatment time or a measure of clinical outcome for patients treated with aspiration thrombectomy; and 3) the study must be written in English.

Aspiration thrombectomy and ADAPT are inconsistently defined in the literature. Terminology for aspiration thrombectomy includes thromboaspiration; forced arterial suction thrombectomy, or FAST; modified Penumbra System (Penumbra, Alameda, California); manual aspiration thrombectomy, or MAT; and ADAPT.^{7–10} Manual aspiration thrombectomy has variably been used to refer to stent-based thrombectomy under aspiration and to aspiration thrombectomy itself.⁹ ADAPT has a similar semantic fluidity, with some studies by using ADAPT and aspiration thrombectomy interchangeably. ADAPT has also been called sequential endovascular thrombectomy approach, or SETA; switching strategy for mechanical thrombectomy; and first-line aspiration.¹¹

In this review, we define ADAPT as using aspiration thrombectomy on the first pass with the option of subsequent adjuvant treatment if recanalization is not achieved.¹² We chose to define ADAPT in this way because allowing neurointerventionalists to switch to other thrombectomy methods after initial attempts at aspiration thrombectomy is a more clinically pragmatic approach.¹¹ Furthermore, the ADAPT acronym explicitly specifies direct aspiration as a first pass and does not limit subsequent passes to aspiration.¹²

In contrast to “ADAPT” studies, we define “asp only” studies as ones that limit neurointervention to aspiration thrombectomy regardless of the initial ability to achieve recanalization. We make a distinction between “ADAPT-asp only”

patients who received only aspiration under the ADAPT paradigm and “asp only” patients who were restricted to aspiration thrombectomy by treatment protocol. Patients treated with only aspiration under the ADAPT paradigm often achieved recanalization during initial passes with aspiration thrombectomy and did not require subsequent passes with stent retrievers. In contrast, “ADAPT-asp + adjuvant” patients often were not able to achieve recanalization with initial attempts at aspiration thrombectomy, and “asp only” patients continued with aspiration thrombectomy despite unsuccessful initial passes with aspiration thrombectomy. Patients who received only aspiration under the ADAPT paradigm might therefore represent less complicated cases, and we categorized them separately from patients restricted to an aspiration-only protocol.

Data Extraction

Demographic information, baseline characteristics, treatment, and clinical outcomes were extracted from studies that met the inclusion criteria. Demographic information included number of patients, age, and sex. Baseline characteristics include NIHSS at hospital admission and location of the occlusion. Treatment includes devices used, the proportion of patients who received IV-tPA before thrombectomy, onset-to-puncture times, puncture-to-recanalization times, proportion of patients treated with aspiration thrombectomy alone, and proportion of patients treated with stent retriever after attempt with aspiration thrombectomy (ADAPT). Clinical outcomes include TICI 2b/3 recanalization rate, rate of symptomatic intracerebral hemorrhage, rate of embolic occlusion in new territories, 90-day mRS, and 90-day mortality.

Statistical Analysis

Recanalization rates and clinical outcomes were assessed by meta-analysis. Cochran Q test and I^2 test were used to detect heterogeneity. Significant heterogeneity was defined as either a Cochran Q greater than the χ^2 critical value at 10% level of significance or an I^2 value greater than 50%. A random effects model was used for meta-analysis. All statistical analyses were performed by using the R language for statistical programming (<http://www.r-project.org/>).

RESULTS

Study Selection

The data base search yielded 708 studies from MEDLINE (270), Scopus (402), and Cochrane (36). Study selection is summarized in the flow diagram (Fig 1). Among these studies, the THRACE trial and the THERAPY trial were randomized controlled clinical trials with at least 20 patients treated with aspiration thrombectomy.^{13,14} The THRACE trial compared thrombectomy after intravenous alteplase with intravenous alteplase alone. Of 141 patients treated with thrombectomy, 23 (16%) were patients treated with aspiration.¹⁴ Outcome data specific to these 23 patients was not available, and this study was not included in this review. The THERAPY trial investigated whether aspiration thrombectomy after intravenous alteplase is superior to intravenous alteplase alone. The trial was terminated because of the loss of equipoise from the publication of MR CLEAN and the establishment of endovascular

therapy with intravenous alteplase as the standard of care.¹³ The results of the trial are therefore underpowered, but are included in this meta-analysis. Ultimately, 20 studies comprising 1523 patients were selected for review (Table 1, On-line Tables 1 and 2).^{7-13,15-27} Nineteen of these studies were retro-

spective, and 1 was prospective. Treatment times and clinical outcomes are summarized in Table 1.

Of the 20 studies included in this review, 5 followed an aspiration-only approach to treatment and 16 used an ADAPT paradigm. One study included both an aspiration-only group and an ADAPT group.¹¹ Four of the ADAPT studies included descriptive statistics for the subgroup of patients who were only treated with aspiration and the subgroup of patients with subsequent passes of adjuvant treatment after initial passes with aspiration thrombectomy (On-line Tables 3 and 4).^{18,21,23,26}

ADAPT Meta-Analysis and Study Heterogeneity

A meta-analysis of 16 ADAPT studies was performed for rates of successful recanalization (TICI 2b/3) and good clinical outcome (90-day mRS ≤ 2). The TICI 2b/3 recanalization rate was 89.3% (95% CI, 85.4%–92.3%) (Fig 2). Among patients treated with ADAPT, 52.7% (95% CI, 48.0%–57.4%) had a good clinical outcome (Fig 3). Cochran Q test and I^2 test suggest significant heterogeneity between studies for successful recanalization ($Q = 54.5$; $df = 15$; $I^2 = 72.5\%$; $P < .001$) and good clinical outcome ($Q = 27.8$; $df = 12$; $I^2 = 56.8\%$; $P < .001$). Tests for funnel plot asymmetry found evidence of publication bias for recanalization rates ($P = .01$), but not for clinical outcomes ($P = .42$) (On-line Figs 1 and 2).

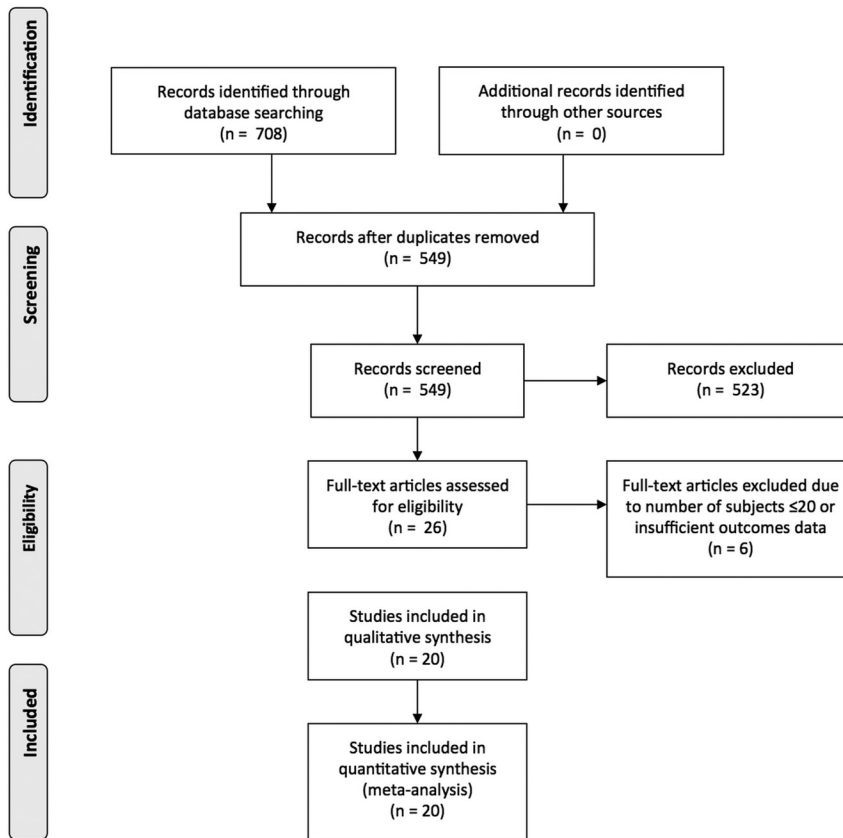


FIG 1. PRISMA flow diagram on study inclusion.

Table 1: Treatment times and clinical outcomes by study

Study	Treatment	No. of Patients	OTP (min)	PTR (min)	Final TICI 2b/3 (%)	90-Day mRS ≤ 2 (%)	90-Day Mortality (%)	Asp Only (%)	Asp + Adjuvant (%)
Mocco et al, ¹³ 2016	Asp only	50	227	NA	70 (30/43)	38	12	NA	NA
Park et al, ¹⁰ 2016	Asp only	32	234	33	84	78	3	NA	NA
Eom et al, ⁷ 2014	Asp only	32	281	76	88	NA	25	NA	NA
Hwang et al, ⁸ 2013	Asp only	20	276	63	65	45	0	NA	NA
Kang et al, ¹¹ 2013 (period 1)	Asp only	61	292	60	74	49	NA	NA	NA
Delgado Almandoz et al, ¹⁵ 2016	ADAPT	45	224	50	89	56	18	NA	NA
Hungerford et al, ¹⁶ 2016	ADAPT	154	454	40	95	53	10	81	19
Kabbasch et al, ¹⁸ 2016	ADAPT	30	189	26	90	43	20	70	30
Kim et al, ²⁰ 2016	ADAPT	25	236	53	72	84	0	81	19
Kowoll et al, ²¹ 2016	ADAPT	54	179	41	93	NA	NA	56	44
Lapergue et al, ²² 2016	ADAPT	124	247	45	82	53	23	55	45
Mascitelli et al, ²⁷ 2016	ADAPT	76	295	NA	92	NA	NA	58	42
Romano et al, ²³ 2016	ADAPT	152	227	58	76	51	8	63	29
Vargas et al, ²⁶ 2016	ADAPT	191	468	37	94	54	15	76	23
Jankowitz et al, ¹⁷ 2015	ADAPT	112	267	70	86	46	31	59	41
Kim et al, ⁹ 2015	ADAPT	70	238	34	91	60	3	91	9
Turk et al, ²⁴ 2014a	ADAPT	98	507	37	95	39	19	78	22
Turk et al, ²⁵ 2014b	ADAPT	64	NA	NA	95	47	NA	NA	NA
Turk et al, ¹² 2014c	ADAPT	37	342	28	97	NA	NA	76	24
Kang et al, ¹¹ 2013 (period 2)	ADAPT	74	233	68	85	68	NA	NA	NA
Kang et al, ¹⁹ 2011	ADAPT	22	318	40	82	46	14	82	18

Note:—Asp indicates aspiration; NA, not available; OTP, onset-to-puncture; PTR, puncture-to-recanalization.

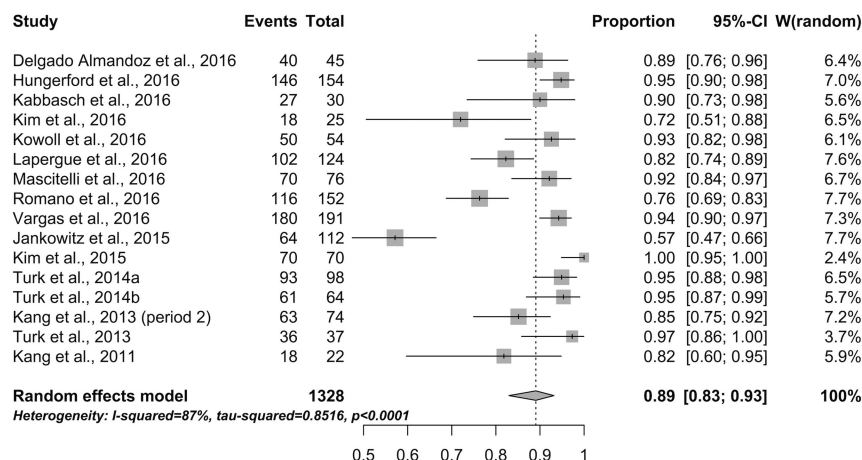


FIG 2. Forest plot of TICI 2b/3 recanalization rates by study.

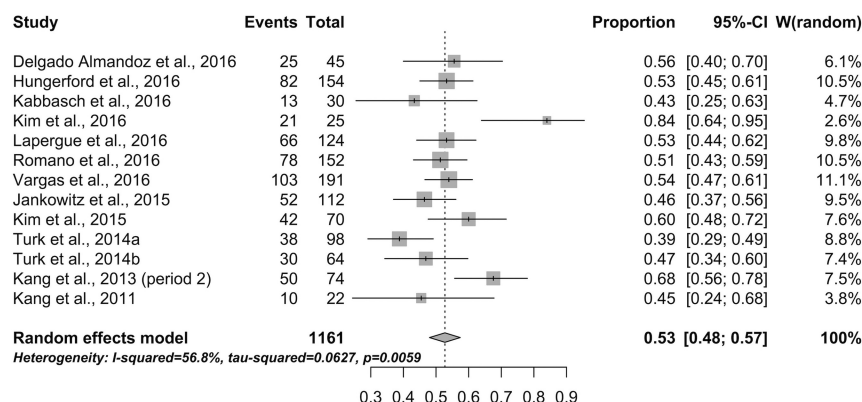


FIG 3. Forest plot of good outcomes (90-day mRS ≤ 90) by study.

DISCUSSION

Endovascular treatment of acute ischemic stroke with large vessel occlusion more than doubles the odds of a good clinical outcome compared with medical treatment alone and is now considered the standard of care.²⁸ Aspiration thrombectomy is a form of endovascular treatment that may have advantages over stent retrievers with respect to puncture-to-recanalization times, recanalization rates, cost-effectiveness, and clinical outcomes.^{15,18,29} In this literature review, we categorized studies involving treatment with aspiration thrombectomy into 3 categories: 1) patients treated under an aspiration-only paradigm, 2) patients treated under ADAPT who only received aspiration thrombectomy, and 3) patients treated under ADAPT.

Aspiration Thrombectomy

Comparatively few studies assess aspiration thrombectomy without adjuvant therapy, and 5 studies were included in this review. The THERAPY trial was a randomized controlled clinical trial comparing aspiration thrombectomy after intravenous alteplase to medical treatment with alteplase alone. Aspiration thrombectomy with the Penumbra System was the procedure specified in the study protocol; however, 13% of patients were nonetheless treated with a stent retriever. A Penumbra 3D separator was also used in 25% of patients. Although the trial was underpowered because of early termination from loss of equipoise, trends were seen in superior clinical outcomes for aspiration thrombectomy.

Ninety-day mortality was 12% for aspiration thrombectomy and 23.9% for medical treatment ($P = .18$). In the per-protocol population, good clinical outcome as measured by ordinal mRS had a 2.2 odds ratio ($P = .05$) in favor of aspiration thrombectomy.¹³ An earlier retrospective study by Eom et al⁷ similarly found aspiration thrombectomy superior to intra-arterial fibrinolysis. Aspiration thrombectomy had faster procedure times as well as higher rates of recanalization and good clinical outcomes in this study on basilar artery occlusions.

In another retrospective study, Hwang et al⁸ found that aspiration thrombectomy for distal internal carotid occlusion strokes had superior recanalization rates and clinical outcomes compared with mechanical clot disruption. Patients treated with aspiration thrombectomy had a TICI 2b/3 recanalization rate of 64.7% (11/17) compared with 16.7% (1/6) for mechanical clot disruption ($P = .04$). Aspiration thrombectomy was also more likely to lead to good clinical outcome, with 45% (9/20) of patients having a 90-day mRS ≤ 2 compared with 16% (3/19) for mechanical clot disruption ($P = .05$). Park et al¹⁰ evaluated the effectiveness of aspiration

thrombectomy for more distally located large vessel occlusions. Aspiration thrombectomy successfully recanalized 84% (27/32) of patients with M2 occlusions, resulting in a good clinical outcome (90-day mRS ≤ 2) for 78% (25/32) of patients.

Kang et al¹¹ compared the aspiration-only paradigm with the ADAPT paradigm in a period-to-period analysis. There was a trend toward superior TICI 2b/3 recanalization rates for ADAPT over aspiration-only ($P = .10$), which became significant for difficult cases requiring at least 3 passes ($P = .03$). Overall, the aspiration-only paradigm may have superior clinical outcomes compared with intravenous medical management, intra-arterial fibrinolysis, and mechanical clot disruption. Aspiration only, however, may be inferior to the ADAPT paradigm.^{8,11,13}

ADAPT–Aspiration Only

Among the 16 studies included in this review that used ADAPT, 4 provided descriptive statistics for the subgroup that received only aspiration thrombectomy. Patients who received only aspiration under the ADAPT paradigm had shorter puncture-to-recanalization times than patients who were also treated with stent retriever or other adjuvant therapies.^{18,21,23,26} This is expected because ADAPT calls for aspiration as a first attempt, so patients successfully treated with aspiration would have fewer passes and shorter treatment times than patients who had subsequent passes. The potential advantages of ADAPT may be especially realized in pa-

tients who are recanalized early through aspiration thrombectomy. In patients treated under ADAPT, 56%–91% were treated by aspiration alone.^{9,21}

ADAPT

Comparisons of puncture-to-recanalization times, recanalization rates, and clinical outcomes between ADAPT and stent-based thrombectomy have been inconclusive and have had conflicting results.^{15,20,22,29} Kim et al²⁰ found that ADAPT has longer puncture-to-recanalization times than stent-based thrombectomy for M2 occlusions. Turk et al²⁹ reported the opposite and found faster treatment times for ADAPT, whereas Lapergue et al²² did not report a significant difference in treatment times despite patients treated under ADAPT having more passes overall. Both Turk et al²⁹ and Lapergue et al²² reported higher recanalization rates for ADAPT; however, this did not translate to a significant difference in 90-day clinical outcome. In contrast, Delgado Almandoz et al¹⁵ reported no difference in treatment times despite more passes and no difference in recanalization, but found an advantage for ADAPT in clinical outcomes.

A meta-analysis of 16 studies was performed to assess rates of recanalization and good clinical outcome for ADAPT. The TICI 2b/3 recanalization rate was 89.3% (95% CI, 85.4%–92.3%) and the rate of 90-day mRS ≤ 2 was 52.7% (95% CI, 48.0%–57.4%). Goyal et al²⁸ conducted a patient-level meta-analysis of MR CLEAN, ESCAPE, REVASCAT, SWIFT PRIME, and EXTEND IA. These 5 randomized clinical trials used predominantly stent-based thrombectomy for first-line neurointervention and had an overall recanalization rate of 70.5% (402/570) and good clinical outcome rate of 46.0% (291/633) (On-line Table 5). Although recanalization and good clinical outcome rates were lower for the stent retriever meta-analysis than the lower bound of the 95% CI for this ADAPT meta-analysis, different inclusion criteria between studies and significant heterogeneity in the ADAPT meta-analysis limit interpretation of the relative utility of these thrombectomy techniques.

ADAPT has furthermore been reported to result in fewer complications with intracerebral hemorrhage, fewer cases of subarachnoid hemorrhage, and shorter length-of-stay in an intensive care unit.^{15,29} These advantages have not been consistently found to be significant in the literature, and there does not appear to be a consensus on whether ADAPT offers any clinical advantages to stent-based thrombectomy with respect to complications.^{22,29} Unlike stent-based thrombectomy, however, patients with subcortical infarctions treated with ADAPT do not demonstrate an increase in hemorrhage, which may be because of aspiration thrombectomy having less of a shearing effect on vascular endothelium.¹⁶ Aspiration thrombectomy may therefore have a role in expanding inclusion criteria for endovascular stroke treatment.

Factors Affecting Success of Aspiration Thrombectomy

Choice of aspiration catheter may affect success with aspiration thrombectomy. As new aspiration catheters are introduced and neurointerventionalists become more experienced, success rates with aspiration thrombectomy are expected to improve.²⁹ It is worth noting that treatment with aspiration alone does not necessarily translate to use of a single device. Jankowitz et al¹⁷ re-

ported that a single aspiration catheter was able to achieve recanalization in 41% of patients, and an additional catheter was necessary in 18% of patients. Nonetheless, aspiration thrombectomy is more cost-effective and requires fewer resources than stent-based thrombectomy.²⁹

The techniques used in aspiration thrombectomy and characteristics of large vessel occlusion may factor into relative success with aspiration thrombectomy and stent-based thrombectomy. Aspiration thrombectomy is particularly challenging with tortuosity, and a stent retriever may be the preferred method of treatment when the occlusion is located immediately distal to a severe acute angulation.²⁰ Young age of the patient, however, has been found to be associated with successful revascularization when using aspiration thrombectomy.²⁷ In Mascitelli et al,²⁷ average age of the patient in cases with successful aspiration thrombectomy was 66.5 years, and average age of the patient in cases of aspiration failure was 74.1 years ($P = .03$).

Clot composition may influence the ease of thrombectomy, and it is possible certain types of clots are more amenable to different treatment modalities. Kang et al¹¹ found that the ADAPT paradigm of switching to a stent retriever after initial failure with aspiration thrombectomy led to greater rates of recanalization than continued attempts with aspiration thrombectomy. Conversely, Kim et al³⁰ used aspiration thrombectomy to successfully revascularize 83.3% of patients who were recalcitrant to initial passes with a stent retriever. Aspiration thrombectomy and stent-based thrombectomy may have unique roles in acute stroke neurointervention, and future studies may identify factors that predict favorable response to each endovascular treatment.

Limitations and Future Directions

Limitations of this study include heterogeneity in the studies that met inclusion criteria for meta-analyses as well as evidence of publication bias for recanalization rate. Furthermore, most of the studies included in this review used ADAPT as the treatment protocol. There is a paucity of literature directly comparing aspiration thrombectomy with stent-based thrombectomy. Nearly all studies, including all studies assessing ADAPT, were retrospective. The COMPASS trial and ASTER trial are 2 randomized controlled trials designed to assess the potential noninferiority of ADAPT compared with stent-based thrombectomy. One of these trials (ASTER) has finished recruitment and the other (COMPASS) is ongoing. The results from these trials will hopefully address a gap in the literature on the effectiveness of the ADAPT approach.

CONCLUSIONS

This systematic review confirms that ADAPT and aspiration thrombectomy are effective approaches to thrombectomy for acute ischemic stroke. Meta-analysis found ADAPT is associated with 89.3% of patients achieving TICI 2b/3 recanalization and 52.7% having a 90-day mRS ≤ 2 . A limitation of this review is that there are few studies investigating aspiration thrombectomy without adjuvant therapy, and only retrospective studies of ADAPT were available for meta-analysis. Furthermore, the ADAPT meta-analyses have significant heterogeneity with evidence of publication bias in recanalization rates, which may limit interpretation of

these results. Prospective studies are necessary to directly assess the utility of aspiration thrombectomy and ADAPT.

Disclosures: Johanna Fifi—UNRELATED: Consultancy: Penumbra, MicroVention; Grants/Grants Pending: Stryker; Payment for Lectures (including service on Speakers Bureaus): Penumbra. J.D. Mocco—UNRELATED: Consultancy: Rebound Medical, Endostream, Synchron, Cerebrotech, TSP, Pulsar; Grants/Grants Pending: Stryker Neurovascular, Penumbra, Medtronic, Microvention*; Stock/Stock Options: Blockade Medical, TSP, Cerebrotech; Other: Apama, The Stroke Project, Endostream, Synchron, Cerebrotech, NeurVana, NeuroTechnology Investors, Comments: investor/ownership. Reade De Leacy—UNRELATED: Consultancy: Medical Metrics, Dfine, Comments: spine interventional company. *Money paid to the institution.

REFERENCES

- Berkhemer OA, Fransen PS, Beumer D, et al. **A randomized trial of intraarterial treatment for acute ischemic stroke.** *N Engl J Med* 2015; 372:11–20 [CrossRef Medline](#)
- Campbell BC, Mitchell PJ, Kleinig TJ, et al. **Endovascular therapy for ischemic stroke with perfusion-imaging selection.** *N Engl J Med* 2015;372:1009–18 [CrossRef Medline](#)
- Goyal M, Demchuk AM, Menon BK, et al. **Randomized assessment of rapid endovascular treatment of ischemic stroke.** *N Engl J Med* 2015;372:1019–30 [CrossRef Medline](#)
- Jovin TG, Chamorro A, Cobo E, et al. **Thrombectomy within 8 hours after symptom onset in ischemic stroke.** *N Engl J Med* 2015;372: 2296–306 [CrossRef Medline](#)
- Saver JL, Goyal M, Bonafe A, et al. **Stent-retriever thrombectomy after intravenous t-PA vs. t-PA alone in stroke.** *N Engl J Med* 2015; 372:2285–95 [CrossRef Medline](#)
- Moher D, Liberati A, Tetzlaff J, et al. **Preferred reporting items for systematic reviews and meta-analyses: the PRISMA statement.** *J Clin Epidemiol* 2009;62:1006–12 [CrossRef Medline](#)
- Eom YI, Hwang YH, Hong JM, et al. **Forced arterial suction thrombectomy with the Penumbra reperfusion catheter in acute basilar artery occlusion: a retrospective comparison study in 2 Korean university hospitals.** *AJNR Am J Neuroradiol* 2014;35:2354–59 [CrossRef Medline](#)
- Hwang YH, Kang DH, Kim YW, et al. **Outcome of forced-suction thrombectomy in acute intracranial internal carotid occlusion.** *J Neurointerv Surg* 2013;5 suppl 1:i81–84 [CrossRef Medline](#)
- Kim YS, Kwak HS, Chung GH, et al. **Manual aspiration thrombectomy using the Penumbra catheter in patients with acute M1 occlusion: a single-center study.** *Interv Neuroradiol* 2015;21:694–99 [CrossRef Medline](#)
- Park JS, Kwak HS. **Manual aspiration thrombectomy using Penumbra catheter in patients with acute M2 occlusion: a single-center analysis.** *J Korean Neurosurg Soc* 2016;59:352–56 [CrossRef Medline](#)
- Kang DH, Kim YW, Hwang YH, et al. **Switching strategy for mechanical thrombectomy of acute large vessel occlusion in the anterior circulation.** *Stroke* 2013;44:3577–79 [CrossRef Medline](#)
- Turk AS, Spiotta A, Frei D, et al. **Initial clinical experience with the ADAPT technique: a direct aspiration first pass technique for stroke thrombectomy.** *J Neurointerv Surg* 2014;6:231–37 [CrossRef Medline](#)
- Mocco J, Zaidat OO, von Kummer R, et al. **Aspiration thrombectomy after intravenous alteplase versus intravenous alteplase alone.** *Stroke* 2016;47:2331–38 [CrossRef Medline](#)
- Bracard S, Ducrocq X, Mas JL, et al. **Mechanical thrombectomy after intravenous alteplase versus alteplase alone after stroke (THRACE): a randomised controlled trial.** *Lancet Neurol* 2016; 15:1138–47 [CrossRef Medline](#)
- Delgado Almandoz JE, Kayan Y, Young ML, et al. **Comparison of clinical outcomes in patients with acute ischemic strokes treated with mechanical thrombectomy using either Solumbra or ADAPT techniques.** *J Neurointerv Surg* 2016;8:1123–28 [CrossRef Medline](#)
- Hungerford JP, Hyer M, Turk AS, et al. **Impact of ASPECT scores and infarct distribution on outcomes among patients undergoing thrombectomy for acute ischemic stroke with the ADAPT technique.** *J Neurointerv Surg* 2016 Aug 22. [Epub ahead of print] [CrossRef Medline](#)
- Jankowitz B, Grandhi R, Horev A, et al. **Primary manual aspiration thrombectomy (MAT) for acute ischemic stroke: safety, feasibility and outcomes in 112 consecutive patients.** *J Neurointerv Surg* 2015; 7:27–31 [CrossRef Medline](#)
- Kabbasch C, Möhlenbruch M, Stampfl S, et al. **First-line lesional aspiration in acute stroke thrombectomy using a novel intermediate catheter: initial experiences with the SOFIA.** *Interv Neuroradiol* 2016;22:333–39 [CrossRef Medline](#)
- Kang DH, Hwang YH, Kim YS, et al. **Direct thrombus retrieval using the reperfusion catheter of the Penumbra system: forced-suction thrombectomy in acute ischemic stroke.** *AJNR Am J Neuroradiol* 2011;32:283–87 [CrossRef Medline](#)
- Kim YW, Son S, Kang DH, et al. **Endovascular thrombectomy for M2 occlusions: comparison between forced arterial suction thrombectomy and stent retriever thrombectomy.** *J Neurointerv Surg* 2017;9:626–30 [CrossRef Medline](#)
- Kowoll A, Weber A, Mpotsaris A, et al. **Direct aspiration first pass technique for the treatment of acute ischemic stroke: initial experience at a European stroke center.** *J Neurointerv Surg* 2016;8:230–34 [CrossRef Medline](#)
- Lapergue B, Blanc R, Guedin P, et al. **A direct aspiration, first pass technique (ADAPT) versus stent retrievers for acute stroke therapy: an observational comparative study.** *AJNR Am J Neuroradiol* 2016; 37:1860–65 [CrossRef Medline](#)
- Romano DG, Cioni S, Vinci SL, et al. **Thromboaspiration technique as first approach for endovascular treatment of acute ischemic stroke: initial experience at nine Italian stroke centers.** *J Neurointerv Surg* 2017;9:6–10 [CrossRef Medline](#)
- Turk AS, Frei D, Fiorella D, et al. **ADAPT FAST study: a direct aspiration first pass technique for acute stroke thrombectomy.** *J Neurointerv Surg* 2014;6:260–64 [CrossRef Medline](#)
- Turk AS, Turner R, Spiotta A, et al. **Comparison of endovascular treatment approaches for acute ischemic stroke: cost effectiveness, technical success, and clinical outcomes.** *J Neurointerv Surg* 2015;7: 666–70 [CrossRef Medline](#)
- Vargas J, Spiotta A, Fargen K, et al. **Long term experience using the ADAPT technique for the treatment of acute ischemic stroke.** *J Neurointerv Surg* 2017;9:437–41 [CrossRef Medline](#)
- Mascitelli JR, Kellner CP, Oravec CS, et al. **Factors associated with successful revascularization using the aspiration component of ADAPT in the treatment of acute ischemic stroke.** *J Neurointerv Surg* 2017;9:636–40 [CrossRef Medline](#)
- Goyal M, Menon BK, van Zwam WH, et al. **Endovascular thrombectomy after large-vessel ischaemic stroke: a meta-analysis of individual patient data from five randomised trials.** *Lancet* 2016;387: 1723–31 [CrossRef Medline](#)
- Turk AS 3rd, Campbell JM, Spiotta A, et al. **An investigation of the cost and benefit of mechanical thrombectomy for endovascular treatment of acute ischemic stroke.** *J Neurointerv Surg* 2014;6:77–80 [CrossRef Medline](#)
- Kim SK, Yoon W, Moon SM, et al. **Outcomes of manual aspiration thrombectomy for acute ischemic stroke refractory to stent-based thrombectomy.** *J Neurointerv Surg* 2015;7:473–77 [CrossRef Medline](#)