



## Get Clarity On Generics

Cost-Effective CT & MRI Contrast Agents

 **FRESENIUS  
KABI**

[WATCH VIDEO](#)

# AJNR

## **Use of Diffusion-Weighted Imaging to Evaluate the Initial Response of Progressive Multifocal Leukoencephalopathy to Highly Active Antiretroviral Therapy: Early Experience**

C. Buckle and M. Castillo

This information is current as of August 11, 2025.

*AJNR Am J Neuroradiol* 2010, 31 (6) 1031-1035

doi: <https://doi.org/10.3174/ajnr.A2024>

<http://www.ajnr.org/content/31/6/1031>

ORIGINAL  
RESEARCH

C. Buckle  
M. Castillo

# Use of Diffusion-Weighted Imaging to Evaluate the Initial Response of Progressive Multifocal Leukoencephalopathy to Highly Active Antiretroviral Therapy: Early Experience

**BACKGROUND AND PURPOSE:** IRIS occurs in a small percentage of patients with AIDS following the initiation of HAART. Because PML lesions have a characteristic DWI/ADC appearance, our purpose was to determine if DWI/ADC measurements of PML lesions can be used to follow HAART treatment response and/or identify patients at risk for IRIS.

**MATERIALS AND METHODS:** Six patients with AIDS and PML who had recently started HAART were retrospectively identified. On the basis of clinical history, patients were classified as having slow (non-IRIS) or rapid (IRIS) progression. Images were obtained at pre-HAART (time point 1) and post-HAART (time point 2). ADC parameters were measured and compared by using the 2-tailed *t* test.

**RESULTS:** Seven lesions (4 rapidly progressing, 3 slowly progressing) were identified. Lesions from patients with rapid clinical progression had higher maximal ADC ratios at time point 1. There were also significant correlations between ADC parameters, time to clinical deterioration, and JCV titers.

**CONCLUSIONS:** The ADC parameters of PML lesions were different for patients with rapid-versus-slow clinical progression. In our preliminary experience, ADC was helpful in diagnosing rapid clinical progression and IRIS. ADC values may correlate with the pathologic changes in PML lesions following HAART therapy.

**ABBREVIATIONS:** ADC = apparent diffusion coefficient; AIDS = acquired immunodeficiency syndrome; CI = confidence interval; CLWM = contralateral white matter; DWI = diffusion-weighted imaging; HAART = highly active antiretroviral therapy; HIV = human immunodeficiency virus; IRIS = immune reconstitution inflammatory syndrome; JCV = JC virus; Max = maximum; PML = progressive multifocal leukoencephalopathy; T2WI = T2-weighted imaging

PML is a demyelinating disease caused by the JCV in immunocompromised hosts. Approximately 5%–14% of patients with AIDS develop PML during the course of their disease,<sup>1</sup> and PML is the cause of death in 0.7% of them.<sup>2</sup> Untreated, the disease has a rapid and fatal course, with an average life expectancy of 4 months.<sup>3</sup>

The use of HAART in the treatment of PML has increased the 1-year survival rate by 10%–50%.<sup>4</sup> However, even when HAART successfully restores immune function, 50% of patients with PML die.<sup>5</sup> Approximately 6% of these patients show rapid clinical deterioration following HAART.<sup>6</sup> This paradoxical deterioration in clinical status, termed IRIS, is thought to be secondary to the restoration of the immune system.<sup>7</sup> The effect of IRIS on long-term survival is uncertain, with many but not all case reports suggesting that it results in short-term morbidity but heralds favorable long-term outcome.<sup>7</sup> While clinical deterioration after HAART therapy is the sine qua non of IRIS,

there are no unanimous diagnostic criteria.<sup>8</sup> A number of clinical and imaging features have been associated with both IRIS and treatment response to HAART.<sup>9,10</sup> Clinically, a low CD4 count and early initiation of treatment are thought to increase the risk for IRIS, though the specificity of these findings is limited.<sup>2</sup> On imaging, lesion contrast enhancement has been associated with both IRIS and response to therapy,<sup>11</sup> but because this enhancement is typically transient, its sensitivity as a marker for therapy response is limited. Therefore, there is a need to identify more accurate imaging characteristics of HAART treatment in PML, especially in regard to the diagnosis and development of IRIS.

DWI and ADC detect changes in diffusion of water in brain parenchyma. Several studies have reported ADC/DWI imaging changes in PML lesions. In particular, PML lesions demonstrate patchy restricted diffusion at their periphery correlating with areas of lesion expansion.<sup>12–15</sup> High central ADC may reflect the evolution of PML lesions, indicating both how long they have existed and how likely they are to expand,<sup>16</sup> and ADC/DWI changes are thought to correlate directly with the pathophysiology of the disease.<sup>13</sup> Furthermore, initial studies of PML lesions following HAART therapy suggest that ADC/DWI may correlate with treatment outcomes.<sup>14</sup>

The purpose of our study was to determine whether ADC/DWI measurements of PML lesions before and after initiation of HAART can be used to follow treatment response, in particular, the development of IRIS.

Received September 28, 2009; accepted after revision November 30.

From New York Presbyterian Hospital (C.B.), New York, New York; University of Chicago Medical Center (C.B.), Chicago, Illinois; and University of North Carolina (M.C.), Chapel Hill, North Carolina.

Paper previously presented at: Annual Meeting of the American Society of Neuroradiology, May 31–June 5, 2008; New Orleans, Louisiana.

Please address correspondence to: Christopher Buckle, MD, Department of Radiology, University of Chicago, 5841 Maryland Ave, MC 2026, Chicago, IL, 60637; e-mail: christopherbuckle@gmail.com

DOI 10.3174/ajnr.A2024

## Materials and Methods

All patients with AIDS seen at the New York Presbyterian Hospital between 2003 and 2005 were retrospectively reviewed, and 6 cases were found that fit the following criteria: 1) HIV positive, 2) diagnosis of PML established through JCV in CSF, 3) off HAART at the time of diagnosis or recently initiated HAART before the diagnosis of PML, and 4) T2WI and DWI with or without contrast performed before (time point 1) and initially after (time point 2) the commencement of HAART. The clinical history of all patients was reviewed for the first 60 days following the introduction of HAART. Patients who showed signs of significant clinical deterioration (new symptoms, worsening of initial symptoms related to PML requiring re-hospitalization, or death) within the first 60 days following initiation of HAART were classified as “rapidly progressive.” Patients who demonstrated no significant progression of symptoms in the first 60 days or who were admitted for reasons thought to be unrelated to their PML were deemed “slowly progressive.” All data were obtained in accordance with the Health Insurance Portability and Accountability Act, and the study was approved by the institutional review board.

MR imaging was performed on 1.5T systems by using T1 (TR/TE, 500/15 ms; matrix,  $288 \times 192$ ; FOV,  $22 \times 22$  cm) and T2WI (TR/TE, 4000/85 ms; matrix,  $288 \times 192$ ; FOV,  $22 \times 22$  cm) sequences in at least 2 planes. Axial DWI and ADC maps were acquired by using echo-planar sequences (TR/TE, 8000/85 ms; matrix,  $128 \times 128$ ; FOV,  $22 \times 22$  cm) at b-values of 0, 500, and 1000 s/mm<sup>2</sup>. Imaging was performed at 2 time points, separated by an average of 40 days (range, 11–91 days; the “scan interval”).

To facilitate comparison between images acquired at different time points, we used a spatial normalization algorithm to align the coordinates of the ADC and T2WI sequences at time points 1 and 2. After spatial normalization, the same coordinate corresponded to the same anatomic location for every image in the series, regardless of the time point or the image sequence (ADC, T2WI).

Image analysis was performed by using the MRICro system (<http://www.sph.sc.edu/comd/rorden/mricro.html>). Consistent with prior descriptions,<sup>11</sup> PML lesions were defined as continuous asymmetric scalloped lesions in the white matter on axial T2WI with areas of restricted diffusion on DWI/ADC in patients with clinical, pathologic, and/or laboratory evidence for PML. Using MRICro, we drew individual regions of interest freehand on ADC images at the border of normal-appearing white matter determined by visual inspection by using a window centered at  $130 \times 10^{-5}$  s/mm<sup>2</sup> with a width of  $120 \times 10^{-5}$  s/mm<sup>2</sup> in each axial image in which the lesion was present. The overall lesion region of interest was the composite of these individual axial regions of interest. The standard error in the freehand estimate of a region of interest was estimated at 10% on the basis of the differences between repeated measurements.

Quantitative data were obtained for both components of lesion progression, lesion expansion and lesion evolution. Lesion expansion was defined as the number of pixels within the PML lesion with region-of-interest methods as described above. Lesions with fewer than 80 pixels could not be reliably identified and were excluded from analysis. By definition, expansion was diagnosed when the lesion area at time point 2 was greater than the lesion area at time point 1, with the opposite being true for lesion regression. Lesion expansion was also correlated with the total area and average ADC values within regions of restricted diffusion at the periphery of the lesions. Regions of restricted diffusion were identified on DWIs and quantified by using regions of interest placed on corresponding ADC maps. Data analysis for lesion expansion took into account the interval in days

**Table 1: Clinical and demographic characteristics of the 6 patients**

Patient No.	Age	Sex	Scan Interval (Days)	Clinical Progression
A	40	F	60	Yes, rapidly progressive dysphagia
B	46	M	42	Yes, altered mental status, psychosis
C	35	M	34	Yes, worsening altered mental status
D	53	M	53	No
E	39	M	43	No
F	55	M	91	No

between time points 1 and 2 (the scan interval) by measuring the rate of expansion as follows:

lesion area (time point 2)

– lesion area (time point 1)/scan interval.

Lesion evolution was evaluated by comparing ADC parameters and their changes between time points 1 and 2. Three parameters were measured by using statistics obtained from regions of interest drawn around the entire lesion (average and maximal ADC) and, when present, a central area of ADC values  $> 160 \times 10^{-5}$  mm<sup>2</sup>/s.

Data analysis for lesion evolution took into account variations in ADC of normal brain, known to vary  $\leq 15\%$  between patients.<sup>17</sup> To control for variations in ADC of presumed normal brain tissue, we measured the ADC of CLWM by using an initial 3D region of interest in MRICro (difference from origin, 16; difference at edge, 16; radius of region of interest, 32) and then manually modified it to emulate the contour and position of the lesion. The average and maximal ADC ratios were then calculated as follows:

$$\text{ADC ratio} = \text{ADC value}/[\text{ADC (CLWM)}].$$

The third parameter—high central ADC area—was calculated as the percentage of pixels within the lesion with  $\text{ADC} \geq 160 \times 10^{-5}$  mm<sup>2</sup>/s. While patients with HIV can have a global decrease in white matter ADC due to diffuse leukoencephalopathy, which could cause the overestimation of measured ADC ratios, average contralateral ADC for the patients in this study was  $80 \times 10^{-5}$  mm<sup>2</sup>/s, similar to the average established by Sener<sup>18</sup> for normal controls of  $84 \times 10^{-5}$  mm<sup>2</sup>/s.

ADC parameters for lesions associated with rapid and slow clinical progression were compared and were correlated with clinical and imaging variables, including rate of lesion growth, days to rehospitalization, presence of clinical deterioration, JCV titers when available, and immunologic status (CD4 count and viral load). In both cases, significance was determined by using a 2-sample 2-tailed *t* test with an assumption of unequal variances and a significance threshold of .05.

## Results

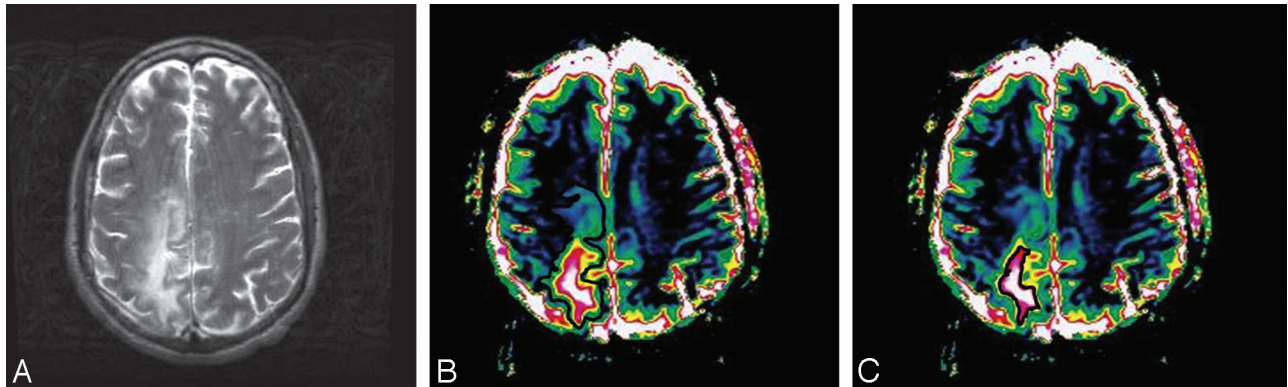
Most patients meeting the selection criteria were new to the hospital, presenting with PML, with limited documentation of their HIV history. All patients were off HAART at the time of presentation. One patient had toxoplasmosis a year before admission, but there were no concurrent AIDS-defining illnesses at the time of presentation. The duration of illness was unknown in half of the patients and ranged from 1 month to 6 years in the others. Pertinent available clinical data are presented in Table 1.

A total of 7 lesions were identified in 6 patients, 4 in the posterior fossa and 3 in the subcortical white matter of the frontal and parietal lobes.

**Table 2: Immunologic, virologic, time point 1 ADC parameters, and growth of PML lesions**

No.	Viral Load	CD4 Count	JCV Titer (Copies/mL)	Max ADC Ratio	Size (Pixels)	High Central ADC Area (%)	Rate of Growth (Pixels/Day)
A1	19 800	147	+	2.2	6535	4.5	78
A2	19 800	147	+	1.8	1095	0	98
B	96 444	62	700	2.4	4094	3.2	403
C	101 026	3	10 100	2.7	12 797	1.6	94
D	1068	437	14 800	1.8	480	0	1.9
E	537 000	78	+	1.8	1442	0	7.3
F	713	30	1200	1.6	1341	0	51

**Note:** —+ indicates positive CSF JCV titer with quantitative titers not performed.



**Fig 1.** MR imaging appearance of PML. T2 (A) and ADC maps with total (B) and central high ( $>160 \times 10^{-5} \text{ mm}^2/\text{s}$ , indicated by pink and white in C) ADC values with corresponding regions of interest. The lesion demonstrates a typical pattern of high ADC in the center with decreasing values toward the periphery.

### Lesion Expansion Measurements

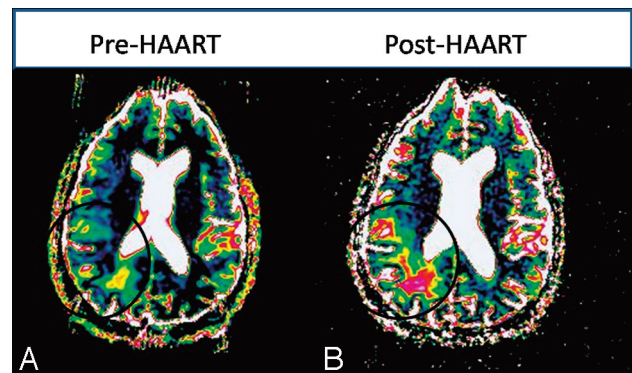
For patients with slow clinical progression ( $n = 3$ ), a total of 3 separate lesions were identified. For patients with rapid clinical progression ( $n = 3$ ), 4 lesions were identified. Rapid-progressing lesions expanded at an average rate of  $168 \pm 78$  pixels/day, 9 times faster than slow-progressing lesions ( $20 \pm 78$  pixels/day). All lesions showed areas of restricted diffusion at their periphery, and none were associated with significant mass effect.

### Lesion Evolution Measurements

ADC parameters for each lesion are presented in Table 2. Representative data is shown in Figures 1–3. There was a statistically significant difference between maximal ADC ratios for the rapid and slow clinical progression groups ( $P < .05$ ; 95% CI, 1.9–2.6) but not for the average ADC ratio ( $P = .16$ ; 95% CI, 1.4–1.7) or lesion size ( $P = .13$ ; 95% CI, 1260–11 000). Maximal ADC ratios greater than 2.2 at time point 1 were unique to rapidly progressing lesions with a positive predictive value of 100% and a negative predictive value of 75%. Maximal ADC ratio was also correlated with lesion size ( $r = +0.83$ ,  $P < .01$ ).

There was no significant correlation between ADC parameters and immunologic status as measured by both CD4 and viral load. However, there was a significant correlation between JCV titers and high central ADC area at time point 1 ( $r = +0.96$ ,  $P < .01$ ).

Time to clinical deterioration was also correlated with both maximal ADC ratio ( $r = -0.89$ ,  $P < .01$ ) and high central ADC ( $r = -0.94$ ,  $P < .01$ ) at time point 1.



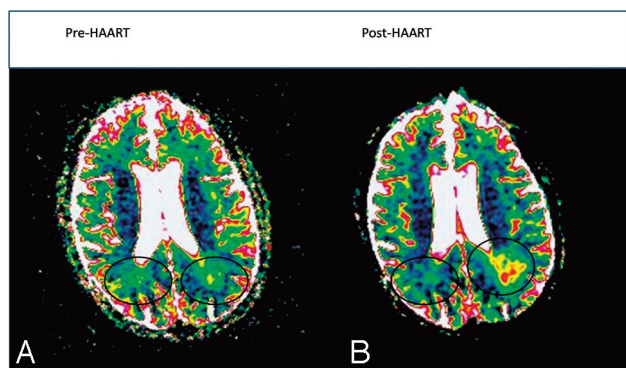
**Fig 2.** Changing ADC/DWI measurements in patients with rapid lesion progression and IRIS. A, A small initial lesion has no area of central high ADC (values  $>160 \times 10^{-5} \text{ mm}^2/\text{s}$ , indicated by pink and white). B, One month after therapy, areas of both the total lesion and central high ADC core have substantially increased.

### Discussion

ADC/DWI characteristics of PML lesions differ in patients with rapid and slow clinical progression following the initiation of HAART therapy, and these findings may aid in the diagnosis and evaluation of PML and IRIS after treatment.

Consistent with prior reports,<sup>12,13</sup> foci of patchy restricted diffusion were present at the periphery of all PML lesions studied. This robust characteristic of PML is less common in other demyelinating disorders like multiple sclerosis, acute disseminated encephalomyelitis, and lymphoma and so may be helpful in differentiating PML from other white matter disorders. The finding does not appear to be helpful in predicting the development of IRIS because it was present in the lesions of patients with PML with both rapid and slow progression. In





**Fig 3.** Changing ADC/DWI measurements in patients with slow lesion progression. *A*, The initial lesion has no area of central high ADC (values  $>160 \times 10^{-5} \text{ mm}^2/\text{s}$ , indicated by pink and white). *B*, One month after therapy, ADC values in the lesion center have increased but only slightly and to a lesser magnitude than lesions in patients with rapid progression.

addition, the significance of this finding is less certain, with 1 study<sup>12</sup> suggesting a correlation between the extent of peripheral diffusion abnormalities and clinical outcome and a larger study failing to find an association between areas of restricted diffusion and clinical performance.<sup>19</sup>

ADC may also help to diagnose IRIS and identify patients at risk. Lesions with higher maximum ADC ratios before initiation of HAART therapy were more likely to progress rapidly, with an ADC ratio of 2.2 having positive and negative predictive values of 100% and 75% for the development of rapid clinical progression. ADC parameters were also correlated with time to clinical progression and JCV titers. If confirmed by larger sample sizes, high ADC values within PML lesions before the initiation of HAART may be considered a risk factor for IRIS. The importance of high central ADC values in predicting clinical outcome is further supported by a recent study of 8 patients demonstrating a positive correlation between increased intralésional ADC and the duration and severity of disease.<sup>19</sup>

What is the significance of the ADC changes within PML lesions that occur with HAART therapy? The pathology of untreated PML lesions is well described<sup>20</sup> and involves a circumferential margin of swollen oligodendrocytes with intranuclear inclusions surrounding a layer of active demyelination. As the disease progresses, demyelinated regions are removed by foamy macrophages; this process results in a disorganized central region with decreased cellularity and bizarre astrocytes without evidence of perivascular inflammation. Therefore, an elevated ADC at the center of slowly progressing lesions is associated with the loss of spatial organization and an increase in extracellular space, while reduced ADC at the lesion periphery is associated with cytotoxic edema and oligodendrocyte swelling in areas of active expansion.<sup>13</sup> ADC changes, therefore, appear to correspond with the pathologic features of PML.

The pathologic correlates of ADC changes in PML lesions provide a basis for understanding the changes that may occur in lesion ADC after HAART both in the IRIS/rapid progression and non-IRIS/slow progression situations. High central ADC may predispose patients to IRIS because it indicates more extensive demyelination and more advanced initial disease. This is supported by a strong correlation between ADC

values and JCV titers. Concerning the pathophysiology and diagnosis of IRIS, both rapid expansion and increased maximal ADC ratios within central portions of lesions could be due to increased extracellular fluid caused by vasogenic edema from the perivascular lymphocytic infiltrates typical of IRIS. It is also conceivable that immune reconstitution reactivates dormant viruses, accelerating the underlying disease process and resulting in greater demyelination, more advanced disease, and correspondingly higher central ADC. Limited available histopathologic and serial virologic correlation provides evidence for both mechanisms. In 1 screened patient who underwent a brain biopsy after rapid clinical progression following initiation of HAART (ultimately excluded from the study for a lack of initial MR imaging), elevated central intralésional ADC ratios post-HAART corresponded to areas of contrast enhancement and extensive perivascular lymphocytic infiltrates. In support of the second mechanism, increased ADC parameters in another rapidly progressing patient (number 3) correlated with an explosion in serial JCV titers from 700 to 322 000 copies/mL despite treatment with HAART, which increased the patient's CD4 count from 400 to 96 000. Hence, the increase in ADC parameters seen in IRIS may correlate with both immunologic and virologic mechanisms. Additional radiologic-pathologic correlation for PML lesions with both rapid and slow progression is needed to test these preliminary hypotheses.

Finally, ADC changes in the non-IRIS treatment response to PML may correspond to improved lesion stability and possibly remyelination. Although patients in this study failed to show significant improvement, HAART treatment may nevertheless slow progression of the disease to more extensive demyelination and correspondingly higher central ADC. Decreased central ADC seen in 1 patient with a favorable response to therapy<sup>14</sup> could be seen with increased anisotropy and possibly indicates remyelination; however, confirmation of this hypothesis with measures of fractional anisotropy and brain biopsy has yet to be obtained. While further studies are needed, the ADC/DWI findings seen after HAART therapy in this study may reflect true pathologic changes that accompany both IRIS and non-IRIS treatment response.

The effect of PML-associated IRIS on overall mortality is controversial, with some studies suggesting rates of mortality similar to those of non-IRIS patients; the condition is often associated with temporary and sometimes significant morbidity.<sup>21</sup> Recent work by Tan et al<sup>22</sup> suggests that patients with PML, like those in the present study who develop IRIS after the initiation of HAART therapy (PML-d-IRIS), have earlier onset of symptoms, greater lesion loads, and shorter durations of survival compared with patients who develop IRIS and PML concurrently (PML-s-IRIS). Further studies comparing ADC changes in PML-d and PML-s lesions would be helpful to test the findings and hypothesis of the present study. Furthermore, there is some evidence that IRIS can be effectively treated with steroids.<sup>22,23</sup> Because both prognosis and treatment may be altered by the presence of IRIS after HAART therapy, imaging tools that can identify patients at risk or detect early occurrence of the condition have important potential clinical benefits.

Our study has limitations. Its design is retrospective. While clinical deterioration after HAART therapy is the *sine qua non*

of IRIS and there are no unanimous diagnostic criteria,<sup>8</sup> correlation with contrast-enhanced MR imaging at time point 2 for patients with rapid progression would further support the diagnosis of IRIS over clinical progression as a part of the natural course of PML. A prospective design with routine contrast-enhanced MR imaging, while difficult given the rarity of the disease, would be helpful. ADC maps were computed by using only 3 b-values (0, 500, and 1000 s/mm<sup>2</sup>), though only small differences (0.84% in 1 study)<sup>24</sup> existed between these and ADC values calculated by using 6 b-values. The use of DWI and scalars of anisotropic diffusion such as fractional anisotropy would give additional important insights in the type, progression, and extent of white matter injury. While standard methods were used for drawing regions of interest, they were drawn by a single observer not blinded to the results.

The small sample size significantly limits the power of the results to detect minor differences between rapid- and slow-progressing lesions. Two clinical limitations are the lack of patients with a favorable long-term response to HAART and potential difficulties assessing patient compliance with HAART, given the retrospective nature of the clinical information. Longer follow-up by using serial DWI of a larger number of patients with PML after the initiation of HAART will be helpful in testing and extending the observations and hypothesis made in this case series. For these reasons, we believe that our observations should be considered as preliminary only and will necessitate confirmation with a larger number of patients.

## Conclusions

The ADC values of PML lesions were different for patients demonstrating rapid-versus-slow clinical progression after treatment with HAART. In our preliminary experience, ADC may be helpful in diagnosing IRIS. ADC values may correlate with the pathologic changes in PML lesions that follow HAART therapy.

## References

- Antinori A, Cingolani A, Lorenzini P, et al, for the Italian Registry Investigative Neuro AIDS Study Group. **Clinical epidemiology and survival of progressive multifocal leukoencephalopathy in the era of highly active antiretroviral therapy: data from the Italian Registry Investigative Neuro AIDS (IRINA).** *J Neurovirol* 2003;(9 suppl 1):47–53
- Antinori A, Ammassari A, Giancola ML, et al. **Epidemiology and prognosis of AIDS-associated progressive multifocal leukoencephalopathy in the HAART era.** *J Neurovirol* 2001;7:323–28
- Bergui M, Bradac GB, Oguz KK, et al. **Progressive multifocal leukoencephalopathy: diffusion-weighted imaging and pathological correlations.** *Neuroradiology* 2004;46:22–25
- Clifford DB, Yiannoutsos C, Glicksman M, et al. **HAART improves prognosis in HIV-associated progressive multifocal leukoencephalopathy.** *Neurology* 1999;52:623–25
- Du Pasquier RA, Koralknik JJ. **Inflammatory reaction in progressive multifocal leukoencephalopathy: harmful or beneficial?** *J Neurovirol* 2003;(9 suppl):125–31
- Miralles P, Berenguer J, Lacruz C, et al. **Inflammatory reactions in progressive multifocal leukoencephalopathy after highly active antiretroviral therapy.** *AIDS* 2001;15:1900–02
- Wyen C, Lehmann C, Fätkenheuer G, et al. **AIDS-related progressive multifocal leukoencephalopathy in the era of HAART: report of two cases and review of the literature.** *AIDS Patient Care STDS* 2005;19:486–94
- Riedel DJ, Pardo CA, McArthur J, et al. **Therapy insight: CNS manifestations of HIV-associated immune reconstitution inflammatory syndrome.** *Nat Clin Pract Neurol* 2006;2:557–65
- Thurnher MM, Post MJ, Rieger A, et al. **Initial and follow-up MR imaging findings in AIDS-related progressive multifocal leukoencephalopathy treated with highly active antiretroviral therapy.** *AJNR Am J Neuroradiol* 2001;22:977–84
- Cinque P, Bossolasco S, Brambilla AM, et al. **The effect of highly active antiretroviral therapy-induced immune reconstitution on development and outcome of progressive multifocal leukoencephalopathy: study of 43 cases with review of the literature.** *J Neurovirol* 2003;(9 suppl 1):73–80
- Post MJ, Yiannoutsos C, Simpson D, et al. **Progressive multifocal leukoencephalopathy in AIDS: are there any MR findings useful to patient management and predictive of patient survival?** AIDS Clinical Trials Group. *AJNR Am J Neuroradiol* 1999;20:1896–906
- Küker W, Mader I, Nägele T, et al. **Progressive multifocal leukoencephalopathy: value of diffusion-weighted and contrast-enhanced magnetic resonance imaging for diagnosis and treatment control.** *Eur J Neurol* 2006;13:819–26
- Mader I, Herrlinger U, Klose U, et al. **Progressive multifocal leukoencephalopathy: analysis of lesion development with diffusion-weighted MRI.** *Neuroradiology* 2003;45:717–21
- Usiskin SI, Bainbridge A, Miller RF, et al. **Progressive multifocal leukoencephalopathy: serial high-b-value diffusion-weighted MR imaging and apparent diffusion coefficient measurements to assess response to highly active antiretroviral therapy.** *AJNR Am J Neuroradiol* 2007;28:285–86
- Ohta K, Obara K, Sakauchi M, et al. **Lesion extension detected by diffusion-weighted magnetic resonance imaging in progressive multifocal leukoencephalopathy.** *J Neurol* 2001;248:809–11
- Buckle CE, Chou D, Ogedegbe A. **Progressive multifocal leukoencephalopathy: correlation with the apparent diffusion coefficient (ADC).** Presented at: 24th International Congress of Radiology, Cape Town, South Africa. September 12–16, 2006
- Gaudinski MR, Henning EC, Miracle A, et al. **Establishing final infarct volume: stroke lesion evolution past 30 days is insignificant.** *Stroke* 2008;39:2765–68
- Sener RN. **Diffusion MRI: apparent diffusion coefficient (ADC) values in the normal brain and a classification of brain disorders based on ADC values.** *Comput Med Imaging Graph* 2001;25:299–326
- Cosottini M, Tavaroli C, Del Bono L, et al. **Diffusion-weighted imaging in patients with progressive multifocal leukoencephalopathy.** *Eur Radiol* 2008;18:1024–30
- Aksamit AJ Jr. **Progressive multifocal leukoencephalopathy: a review of the pathology and pathogenesis.** *Microsc Res Tech* 1995;32:302–11
- Falcó V, Olmo M, del Saz SV, G et al. **Influence of HAART on the clinical course of HIV-1-infected patients with progressive multifocal leukoencephalopathy: results of an observational multicenter study.** *J Acquir Immune Defic Syndr* 2008;49:26–31
- Tan K, Roda R, Ostrow L, et al. **PML-IRIS in patients with HIV infection: clinical manifestations and treatment with steroids.** *Neurology* 2009;72:1458–64
- Berger JR. **Steroids for PML-IRIS: a double-edged sword?** *Neurology* 2009;72:1454–55
- Burdette JH, Elster AD, Ricci PE. **Calculation of apparent diffusion coefficients (ADCs) in brain using two-point and six-point methods.** *J Comput Assist Tomogr* 1998;22:792–94