



Get Clarity On Generics

Cost-Effective CT & MRI Contrast Agents

 **FRESENIUS
KABI**

[WATCH VIDEO](#)

AJNR

This information is current as
of August 11, 2025.

CT Angiography Clot Burden Score and Collateral Score: Correlation with Clinical and Radiologic Outcomes in Acute Middle Cerebral Artery Infarct

I.Y.L. Tan, A.M. Demchuk, J. Hopyan, L. Zhang, D.
Gladstone, K. Wong, M. Martin, S.P. Symons, A.J. Fox and
R.I. Aviv

AJNR Am J Neuroradiol 2009, 30 (3) 525-531

doi: <https://doi.org/10.3174/ajnr.A1408>

<http://www.ajnr.org/content/30/3/525>

**ORIGINAL
RESEARCH**

I.Y.L. Tan
A.M. Demchuk
J. Hopyan
L. Zhang
D. Gladstone
K. Wong
M. Martin
S.P. Symons
A.J. Fox
R.I. Aviv

CT Angiography Clot Burden Score and Collateral Score: Correlation with Clinical and Radiologic Outcomes in Acute Middle Cerebral Artery Infarct

BACKGROUND AND PURPOSE: Clot extent, location, and collateral integrity are important determinants of outcome in acute stroke. We hypothesized that a novel clot burden score (CBS) and collateral score (CS) are important determinants of clinical and radiologic outcomes and serve as useful additional stroke outcome predictors.

MATERIALS AND METHODS: One hundred twenty-one patients with anterior circulation infarct presenting within 3 hours of stroke onset were reviewed. The Spearman correlation was performed to assess the correlation between CBS and CS and clinical and radiologic outcome measures. Patients were dichotomized by using a 90-day modified Rankin scale (mRS) score. Uni- and multivariate logistic regression models were used to assess variables predicting favorable clinical and radiologic outcomes. Receiver operating characteristic and intraclass correlation coefficient (ICC) analyses were performed. Diagnostic performance of a CBS threshold of >6 was assessed.

RESULTS: There were 85 patients (mean age, 70 ± 14.5 years). Patients with higher CBS and CS demonstrated smaller pretreatment perfusion defects and final infarct volume and better clinical outcome (all, $P < .01$). CBS ($P = .009$) and recanalization ($P = .015$) independently predicted favorable outcome. A CBS >6 predicted good clinical outcome with an area under the curve of 0.75 (95% confidence interval [CI], 0.65–0.84; $P = .0001$), sensitivity of 73.0 (95% CI, 55.9–86.2), and specificity of 64.6 (95% CI, 49.5–77.8). The recanalization rate with intravenous recombinant tissue plasminogen activator was higher in patients with CBS >6 ($P = .04$; odds ratio, 3.2; 95% CI, 1.1–9.4). The ICC was 0.97 (95% CI, 0.95–0.98) and 0.87 (95% CI, 0.80–0.91) for CBS and CS, respectively.

CONCLUSIONS: CBS and CS are useful additional markers predicting clinical and radiologic outcomes.

Persistent anterior cerebral circulation occlusion is one of the most devastating clinical events, often causing severe neurologic deficit or death. Current stroke strategy focuses on recanalization as one of the most important factors to reduce tissue at risk and reverse neurologic deficits. The extent of revascularization depends not only on recanalization of the primary arterial occlusive lesion but also on reperfusion of the distal vascular bed.¹ Many factors impact the success of recanalization, including clot composition, thrombolytic technique, extent of clot burden, site of clot impaction, and collateral supply.^{2–6} More proximal and increased clot length is harder to treat, leading to a worse outcome compared with a shorter distal clot.^{2,3,5,7,8} Patients with a hyperattenuated middle cerebral artery (MCA) sign, essentially a marker of proximally located thrombus, have been shown to have a larger final infarct volume and worse functional outcome.² Tandem internal carotid artery (ICA)/MCA occlusions have lower early recanalization and early neurologic improvement rates compared with isolated MCA occlusion.⁹

Although the effects of clot burden have been indirectly examined via the hyperattenuated arterial sign on noncontrast CT (NCCT)^{3,10,11} and directly via conventional angiographic studies, these have only recently been assessed and quantified

with CT Angiography (CTA).² Many clinical and radiologic variables impact the decision for thrombolysis and route of administration. Treatment decisions need to be made rapidly due to the narrow therapeutic window. CTA is widely available and provides a rapid assessment of many of the variables needed to make these decisions. CTA improves infarct depiction and delineation^{12,13} and provides a noninvasive assessment of cervical and intracranial circulation. CT perfusion (CTP) may also provide important additional information in the acute stroke setting that may be used to predict outcome.^{14–17}

The degree of collateral supply through peripheral leptomeningeal sources is important and correlates with the presence of smaller final infarct volume.^{4,18} Evaluation of collateral supply remains challenging due to their diminutive size and complex routes.¹⁹ A conventional angiographic grading system demonstrated a significant relationship between collateralization and favorable outcome.^{20,21} Collateral presence was the only radiologic predictor of favorable outcome in this study, despite a simplistic binary categorization.²¹ A modified collateral score by using high-resolution multidetector CTA, which grades degree of leptomeningeal collateral supply in the MCA territory from grade zero (no collateral supply) to 3 (complete collateral supply), has recently been proposed.²² We refer to this grading system as a collateral score (CS) in this study.

In many centers, CTA precedes conventional angiography for the assessment of patients with stroke. The rationale in these centers is to gather information pertaining to vascular anatomy and site of occlusion before thrombolytic treatment. The purpose of this study was to compare the relationship of clot extent and collaterals with clinical outcome and amount

Received July 7, 2008; accepted after revision October 17.

From the Departments of Neuroradiology (I.Y.L.T., K.W., M.M., S.P.S., A.J.F., R.I.A.) and Neurology (J.H., D.G.) and Odette Cancer Centre (L.Z.), Sunnybrook Health Science Centre, Toronto, Ontario, Canada; and Department of Clinical Neurosciences (A.M.D.), University of Calgary, Calgary Stroke Program, Calgary, Alberta, Canada.

Please address correspondence to Richard Aviv, MD, Department of Medical Imaging, Division of Neuroradiology, Rm AG31, Sunnybrook Health Sciences Centre, 2075 Bayview Ave, Toronto, ON M4N 3M5, Canada; e-mail: Richard.Aviv@sunnybrook.ca

DOI 10.3174/ajnr.A1408

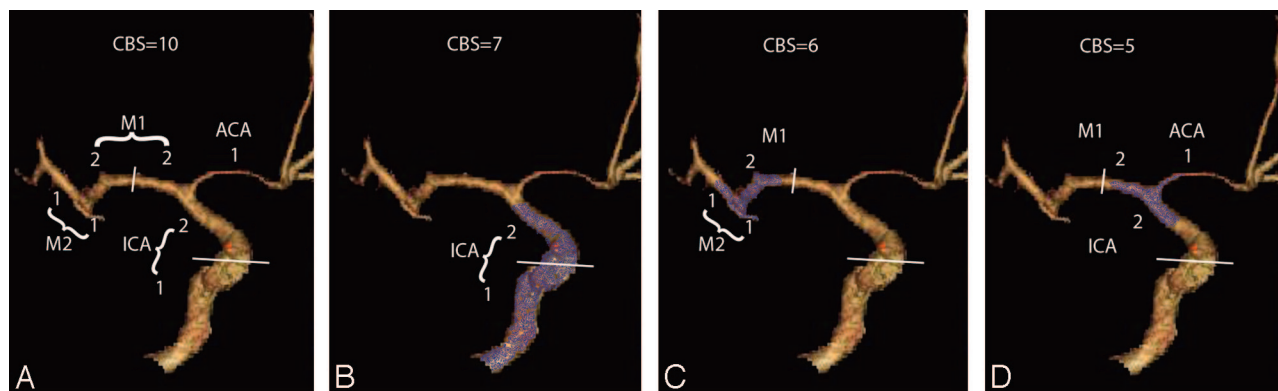


Fig 1. Illustration of CBS. *A*, A 10-point score is normal, implying absence of thrombus. Two points (as indicated) are subtracted for thrombus found on CTA in the supraclinoid ICA and each of the proximal and distal halves of the MCA trunk. One point is subtracted for thrombus found in the infraclinoid ICA and A1 segment and for each affected M2 branch. *B*, Occlusion of infra- and supraclinoid ICAs with a CBS of 7. *C*, Distal M1 and 2 M2 branch occlusions produce a CBS of 6. *D*, Occlusion of the terminal ICA, proximal M1, and A1, with a resultant CBS of 5.

of tissue at risk. We hypothesized that a novel clot burden score (CBS) and the CS are important determinants of clinical and radiologic outcomes and serve as useful additional variables in stroke outcome prediction.

Materials and Methods

Study Design and Patient Cohort

A single-center retrospective study was performed in all patients presenting within 3 hours of stroke symptoms to a regional stroke center between October 2005 and December 2007. Patients were assessed by the stroke team and underwent clinical assessment and an acute CT-based stroke protocol, including CTA and CTP. Follow-up imaging included repeat CTA/CTP within 24 hours and 5- to 7-day CT or MR imaging. Clinical data were collected by a stroke neurologist (J.H. and D.G., 3 and 5 years' experience, respectively) and maintained in a prospective stroke database (M.M., K.W.). Presenting National Institutes of Health Stroke Scale (pre-NIHSS) and 3-month follow-up modified Rankin Scale (mRS) scores were the minimum clinical data required for the study. For the purpose of this study, only patients with unilateral MCA territory stroke who had completed 90-day clinical follow-up were included. Of 458 patients in a prospective stroke and transient ischemic attack data base, 121 had unilateral anterior circulation infarct with variable occlusion involving the MCA with or without ICA occlusion—none had anterior cerebral artery (ACA) infarcts. Of those, 36 patients did not have complete 90-day clinical follow-up at the time of data analysis and were excluded from the study. The final cohort comprised 85 patients. This study was approved by the institutional review board, and individual patient consent was obtained.

Scanning Protocol and Generation of Parametric Maps

The CT stroke protocol, performed on a 64-section CT scanner (LightSpeed VCT, GE Healthcare, Milwaukee, Wis), included pre- and postcontrast CT head scans with the following parameters: 120 kilovolt (peak) (kVp), 340 mA, 8×5 mm collimation, 1 s/rotation, and table speed of 15 mm/rotation. CTA was performed from the aortic arch to the vertex with the following parameters: 0.7 mL/kg iodinated contrast agent up to a maximum of 90 mL (iohexol, Omnipaque, 300 mg iodine/mL; GE Healthcare, Piscataway, NJ), 5- to 10-second delay, 120 kVp, 270 mA, 1 s/rotation, 1.25-mm-thick sections, and table speed of 3.7 mm/rotation. CTA data were automatically processed by the technicians, including multiplanar 7-mm maximum intensity projection (MIP) reconstructions and 4-mm axial reformats or CTA source images.

The CTP technique included a 45-second scanning reconstructed at 0.5-second intervals to produce a series of 90 sequential images for each of the 8 sections, covering a total of 40 mm from the basal ganglia to the lateral ventricles. CTP scanning parameters were the following: 80 kVp, 190 mA, 0.5-mL/kg (maximum, 50 mL) iodinated contrast agent injected at 4 mL/s with a 3- to 5-second delay.

A repeat CTA or MRA was performed within 24 hours of the initial study. Follow-up included an NCCT head scan with similar parameters as previously mentioned and/or follow-up MR imaging protocol at days 5–7. MR imaging sequences included axial fluid-attenuated inversion recovery (FLAIR) (TR/TE/TI, 8000/120/200 ms; FOV, 22 cm; matrix, 320×224 ; section thickness [ST], 5; 1-mm gap), gradient T2-weighted (TR/TE, 1100/35 ms; flip angle [FA], 20°; FOV, 24 cm; matrix, 320×224 ; ST, 5; 1-mm gap), diffusion-weighted imaging (TR/TE, 8125 ms/min; FOV, 26 cm; image matrix, 128×128 pixels; ST, 5 mm with no gap), T2-weighted fast spin-echo (TR/TE, 5100/100 ms; ST, 5 mm; 1-mm gap; FOV, 24 cm; matrix, 320×224), and sagittal T1-weighted FLAIR (TR/TE/TI, 2163/26/750 ms; FOV, 22 cm; matrix, 320×224 ; ST, 5; 1-mm gap). 3D spoiled gradient-recalled-echo contrast-enhanced MRA parameters were the following: TE/FA, minimum/35°; ST, 2 mm; FOV, 30 cm; matrix, 384×320 . Gadolinium 9 mL (Gadovist; Bayer Schering Pharma, Berlin, Germany) 1.5 mL/s with 25 mL of saline flush at same rate.

Imaging Analysis

Scores. The Alberta Stroke Program Early CT Score (ASPECTS) methodology is well described by Barber et al²³ and is shown to have high interobserver agreement. Precontrast CT head scans were independently reviewed by 2 staff neuroradiologists (R.I.A., S.P.S. with 5 years' stroke imaging experience) who were blinded to the patient's clinical symptoms. Median ASPECTSs of these readers were used.

The CBS is a scoring system to define the extent of thrombus found in the proximal anterior circulation by location²⁴ and is scored on a scale of 0–10 (Fig 1). A score of 2 is subtracted if thrombus is found in each of the supraclinoid ICAs, the proximal half of the MCA trunk, and the distal half of MCA trunk. A score of 1 is subtracted if thrombus is found in the infraclinoid ICA, ACA, and for each affected M2 branch. The thrombus can be partially or completely occlusive. A score of 10 is normal, implying clot absence. A score of 0 implies complete multisegment vessel occlusion.

The collateral grading system was scored on a scale of 0–3 (Fig 2).^{19,21} A score of zero indicated absent collateral supply to the oc-

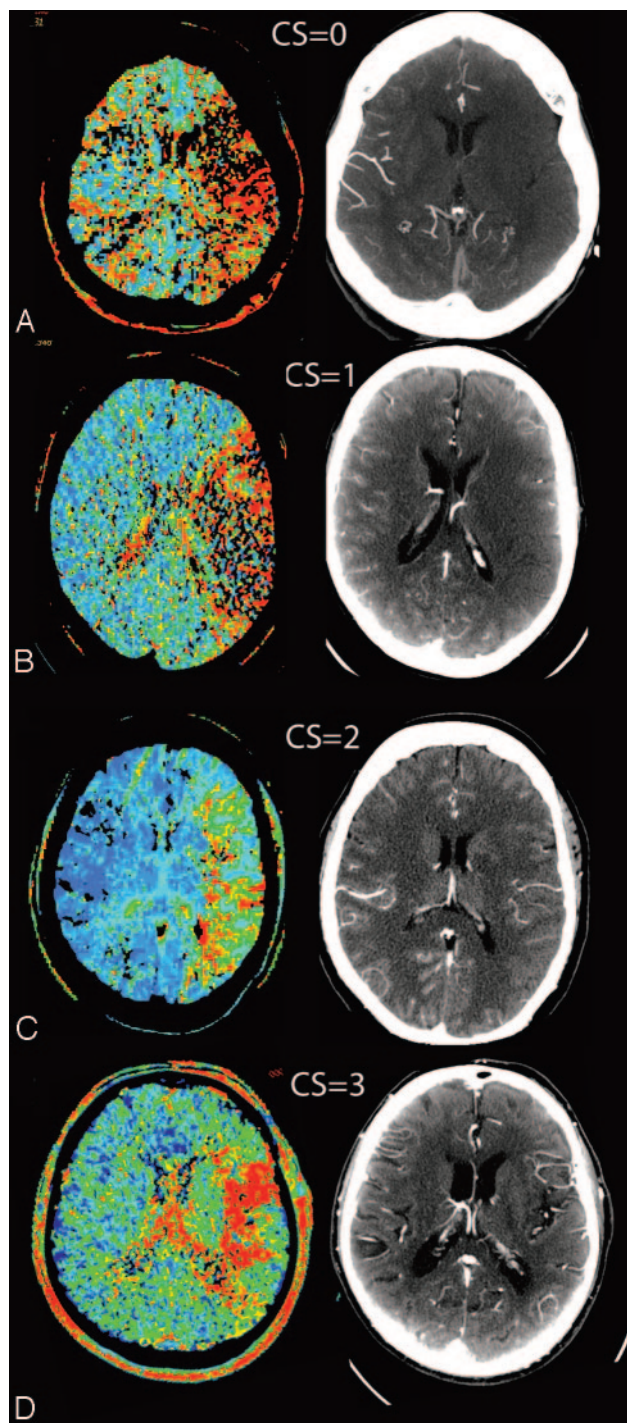


Fig 2. MTT and CTA source images (CTA-SI) of 4 different cases, each demonstrating prolonged MTT from a left MCA territory ischemia. CS grading is demonstrated for each collateral grade. *A*, Absence of vessels on CTA-SI is consistent with a CS of 0. *B*, A score of 1 indicates collateral supply filling $\leq 50\%$ but $>0\%$ of the occluded MCA territory. *C*, A score of 2 is given for collateral supply filling $>50\%$ but $<100\%$ of the occluded MCA territory. *D*, A score of 3 is given for 100% collateral supply of the occluded MCA territory.

cluded MCA territory. A score of 1 indicated collateral supply filling $\leq 50\%$ but $>0\%$ of the occluded MCA territory. A score of 2 was given for collateral supply filling $>50\%$ but $<100\%$ of the occluded MCA territory. A score of 3 was given for 100% collateral supply of the occluded MCA territory. Both the CBS and CS were scored independently and read by a staff neuroradiologist (S.P.S. with 5 years' experience) and neuroimaging fellow (I.Y.L.T. with 1 year of experience)

blinded to clinical data. Raw data and reconstructed CTA images were available for review. Median CS and CBS scores of these readers were used. ASPECTS, CBS, and CS were all obtained only on baseline imaging.

Recanalization was graded according to the Thrombolysis in Myocardial Infarction (TIMI) classification on follow-up CTA/MRA, which was performed within 24 hours of initial study. TIMI zero and 1 were considered nonrecanalized.

Image Processing. CT Perfusion 4 software (GE Healthcare) was used to calculate parametric maps of CBF, CBV, and mean transit time (MTT) by using data from the baseline CT perfusion study. Maps were calculated by deconvolution of the arterial input curve by using the model of Johnson and Wilson.²⁵ Partial volume averaging of the arterial input curve was corrected by using the venous time-attenuation curves.²⁶ Arterial input and venous output functions were obtained from the ipsilateral ACA and from the superior sagittal sinus, respectively. Functional maps created with CTP were analyzed by using custom software (IDL, Verison 6.1; RSI, Chapel Hill, NC) (R.I.A., 5 years' experience). All components of the analysis were performed blinded to clinical information to reduce bias. Thresholds of cerebral blood volume (CBV) <1.0 mL/100 g and a cerebral blood flow (CBF) threshold of <25 mL/100 g/minute were used for volumetric measurement of penumbra and infarct, respectively.^{17,27} The final infarct volume was measured on the follow-up CT or MR imaging study by using Medical Image Processing, Analysis and Visualization, Version 4.0.2-2007-12-12 (Center for Information Technology, National Institutes of Health Bethesda, Md).

Statistical Analysis

Calculations were performed by using SAS (Version 9.1; SAS Institute, Cary, NC) statistical software package (L.Z.). Results were expressed as the mean \pm SD or median (interquartile range [IQR]) for quantitative variables and as proportions for categoric findings. The Spearman nonparametric rank correlation was performed to assess the correlation between variables and clinical and radiologic outcomes according to recanalization status. Patients were dichotomized by using the 90-day mRS score into good (mRS score, ≤ 2) versus poor outcome (mRS score, >2).

Group comparisons were made by using the Wilcoxon rank sum test and the Fisher exact test. Log transformation was used for variables not passing the normality check. A *P* value of $<.05$ was considered statistically significant. A univariate logistic regression model was repeated; adjustment for potential confounders included age, sex, and recombinant tissue plasminogen activator (rtPA) administration. Overdispersion and underdispersion were corrected with the Pearson goodness-of-fit statistic. Odds ratio (OR) with 95% confidence interval (CI) was calculated for each variable.

Multivariate analysis was then performed. The Hosmer and Lemeshow test and C statistic were used to assess the goodness of fit of the multivariate logistic regression model. The subjects were divided into approximately 10 groups of roughly the same size on the basis of the percentiles of the estimated probabilities. The discrepancies between the observed and expected number of observations in these groups were summarized by the Pearson χ^2 statistic, which was then compared with a χ^2 distribution with *t* *df*, where *t* is the number of groups minus *n*. A small *P* value suggested that the fitted model was not adequate. The C statistic is a measure of the discriminative power of the logistic equation. It varies from 0.5 (the predictions of the model are no better than chance) to 1.0 (the model always assigns higher probabilities to correct cases than to incorrect cases for any pair involving dependent = 0 and dependent = 1). Thus C is the

Table 1: Spearman rank correlation of CBS and CS

Variable	CBS (<i>r</i>)	CS (<i>r</i>)
ASPECTS	0.48 (<i>P</i> < .0001)	0.51 (<i>P</i> < .0001)
Baseline NIHSS	−0.34 (<i>P</i> = .002)	−0.41 (<i>P</i> < .0001)
Baseline CBF volume	−0.44 (<i>P</i> < .0001)	−0.54 (<i>P</i> < .0001)
Baseline CBV volume	−0.33 (<i>P</i> = .002)	−0.56 (<i>P</i> < .0001)
Baseline MTT volume	−0.46 (<i>P</i> < .0001)	−0.54 (<i>P</i> < .0001)
90-day mRS score	−0.31 (<i>P</i> = .002)	−0.43 (<i>P</i> = .0001)
Final infarct volume	−0.51 (<i>P</i> < .0001)	−0.63 (<i>P</i> < .0001)

Note:—CBS indicates clot burden score; CS, collateral score; ASPECTS, Alberta Stroke Program Early CT Score; NIHSS, National Institutes of Health Stroke Score; CBF, cerebral blood flow; CBV, cerebral blood volume; MTT, mean transit time; mRS, modified Rankin Scale.

percentage of all possible pairs of cases in which the model assigns a higher probability to a correct case than to an incorrect case.

Radiologic outcomes measured by final infarct volume and success of recanalization were also analyzed by using the above statistical models. Due to the dynamic nature of clot and collaterals and the interaction with time from onset to scanning, scanning to rtPA, and MTT × recanalization, we considered interaction of these factors with CBS. Finally, receiver operating characteristic (ROC) curve analysis was performed on the CBS, the area under curve (AUC) was measured, and a threshold was found. Inter-rater reliability was assessed by intraclass correlation coefficient (ICC) analysis of CBS and CS. A value of 0.20 implied poor agreement; 0.21–0.40, fair agreement; 0.41–0.60, moderate agreement; 0.61–0.80, good agreement; and 0.81–1.0, very good agreement.

Results

Baseline Data

The mean patient age was 70 ± 14.5 years with 36/85 (42%) being male patients. Baseline median pretreatment NIHSS score was 16 (IQR, 10–20). Median symptom onset-to-CT time was 108 minutes (IQR, 70–148). Intravenous rtPA was given to 60 patients (70.5%). Median time to rtPA was 143 minutes (IQR, 120–165) with a mean dose of 60.5 ± 16.5 mg. The median baseline NCCT ASPECTS was 7 (IQR, 5–9); CBS, 6.5 (IQR, 5–9); and CS, 2 (IQR, 1.5–3). Recanalization occurred in 37 patients (43.5%). Thirty (50%) patients receiving rtPA were recanalized compared with 7 (7/25 or 28%) who were not. Final infarct size was 54 mL (IQR, 17–166 mL). Median 90-day mRS score was 3 (IQR, 2–5). Good clinical outcome was seen in 37 patients (43.5%).

CBS and CS Correlation

Correlation was better for CS than CBS for all measured perfusion parameters (Table 1). Patients with smaller thrombus extent (ie, higher CBS) and better collaterals demonstrated smaller pretreatment CBF, MTT, and CBV (*P* < .01 for all parameters) and final infarct volume (*P* < .01) and better functional clinical outcome (*P* < .01). CS was higher in patients with smaller thrombus extent (*r* = 0.38, *P* < .01).

Clinical Outcome

Patients with good clinical outcomes were younger (*P* = .009), with higher baseline ASPECTSs (*P* < .0001), lower baseline NIHSS scores (*P* < .0001), earlier presentation (*P* = .027); and smaller final infarct volume (*P* < .0001) (Table 2). These patients also had a higher CBS (*P* = .0005), CS (*P* = .002), and recanalization rates (*P* = .022) and smaller perfusion defects. No rtPA or sex differences were found between the 2 groups.

Univariate logistic regression analysis is presented in Table 3. Baseline NIHSS score, CBS, and ASPECTS were the most significant predictors of clinical outcome. We considered 5 variables a priori as potential important clinical confounders, including sex, age, baseline NIHSS score, ASPECTS, and rtPA administration. Univariate analysis was repeated, controlling for these variables. Baseline NIHSS score, ASPECTS, and age were significant confounders, but rtPA and sex had limited effect. After adjustment, CBS (*P* < .01), final infarct volume (*P* < .01), and time to scanning (*P* < .01) were significantly associated with clinical outcome. Recanalization had borderline significance (*P* = .047). Multivariate logistic regression analysis, adjusting for confounders, demonstrated significance for CBS (*P* = .009), recanalization (*P* = .015), and 2 confounding factors: baseline NIHSS (*P* = .0025) and age (*P* = .0181) (Table 4). There was an adequate model goodness of fit demonstrated by the Hosmer and Lemeshow test (*P* = .72) and C statistic (*C* = 0.90). Interaction with CBS and time from onset to scanning, scanning to rtPA, and MTT × recanalization were considered. No interaction could be found between each of these parameters and CBS (*P* = .25, *P* = .27, *P* = .08, *P* = .69). CBS, recanalization, baseline NIHSS score, and age remained significantly associated with outcome.

ROC analysis (Fig 3) demonstrated an AUC of 0.75 (95% CI, 0.65–0.84; *P* = .0001). CBS >6 predicted good clinical outcome with a sensitivity of 73% (95% CI, 55.9%–86.2%), a specificity of 64.6% (95% CI, 49.5%–77.8%), and a positive likelihood ratio of 2.1. The patient group was dichotomized by a CBS threshold of >6 (Table 5). There was no significant difference between the 2 groups for age, sex, and baseline clinical variables, including time to scanning (*P* = .3), time to rtPA (*P* = .8), rtPA dose (*P* = .2), hypertension (*P* = .47), and hyperglycemia (*P* = .75). Patients with CBS >6 had a higher baseline ASPECTS, smaller CBV and CBF volume, higher collateral score, smaller final infarct size, and better clinical outcome. Risk of parenchymal hemorrhage was lower but did not reach statistical significance (*P* = .08).

Radiologic Outcome

Univariate logistic regression analysis for final infarct volume demonstrated a negative association between final infarct size and ASPECTS, CBS, and CS (*P* < .0001 for all variables). Baseline CBF, CBV, MTT, and baseline NIHSS score were positively associated with final infarct outcome (*P* < .0001 for all). Baseline ASPECTS (*P* = .02), CBS (*P* = .03), CBV (*P* = .002), and CS (*P* = .04) were associated with final infarct size on multivariate linear regression analysis. Patients with CBS >6 achieved higher recanalization rates (71%) with rtPA than CBS ≤6 (44%) (*P* = .04; OR, 3.2; 95% CI, 1.1–9.4) (Table 5)

Interobserver Agreement

There was very good interobserver correlation for CBS (ICC, 0.97; 95% CI, 0.95–0.98) and CS (ICC, 0.87; 95% CI, 0.80–0.91).

Discussion

CTA-derived assessment of clot extent (CBS) is an independent predictor of clinical and radiologic outcomes in acute MCA territory stroke. Patients with smaller clot extent are more likely to have smaller baseline infarcts and lower baseline

Table 2: Patient clinical outcome dichotomized into good (mRS score, ≤ 2) and poor clinical outcome (mRS score, > 2) at 90 days

Parameters	mRS Score ≤ 2 (n = 38)	mRS Score > 2 (n = 47)	P Value
Age (yr), mean \pm SD	65 (± 15.7)	74 (± 12.7)	.0088
NCCT ASPECTS, median (IQR)	9 (7–9)	6 (4–7)	<.0001
CBS, median (IQR)	7.5 (6–9)	6 (4–7)	.0005
CS, median (IQR)	2.5 (2–3)	2 (1–2.5)	.0015
Baseline NIHSS score, median (IQR)	11 (6–16)	19 (15–23)	<.0001
rtPA, % (No.)	76.3 (29)	70.0 (31)	.3447
rtPA dose (mg), mean \pm SD	62.2 \pm 14.0	59.2 \pm 18.9	.9083
Time to scanning (min), median (IQR)	89 (65–120)	120 (80–150)	.0267
Recanalization, % (No.)	57.9 (22)	31.9 (15)	.0219
Final infarct size (cm ³), mean \pm SD	53 \pm 72	172 \pm 143	<.0001
Baseline CBF (cm ³), mean \pm SD	85 \pm 41	110 \pm 56	.0001
Baseline CBV (cm ³), mean \pm SD	22 \pm 16	56 \pm 45	.0001
Baseline MTT (cm ³), mean \pm SD	109 \pm 84	84 \pm 42	.0344

Note:—NCCT indicates noncontrast CT; IQR, interquartile range; rtPA, recombinant tissue plasminogen activator.

Table 3: Univariate logistic regression analysis for favorable clinical outcome (mRS score, ≤ 2 at 90 days)

Parameter	P Value	OR	Lower 95% Confidence Level for OR	Upper 95% Confidence Level for OR
Age	.0151	0.956	0.922	0.991
ASPECTS	<.0001	1.635	1.464	1.825
NIHSS score at presentation	<.0001	0.827	0.755	0.904
rtPA given	.3061	1.733	0.605	4.970
CBS	<.0001	1.499	1.236	1.818
CS	.0152	3.359	1.263	8.931
CBF	.0263	0.989	0.980	0.999
MTT	.0265	0.989	0.979	0.999
Time to rtPA	.7977	0.998	0.984	1.013
rtPA dose	.4959	1.011	0.979	1.045
CBS > 6	.0033	4.219	1.617	11.010
Hyperglycemia	.0303	0.097	0.012	0.801
Final infarct size	.0002	0.442	0.286	0.684
Recanalization	.0183	3.077	1.209	7.826

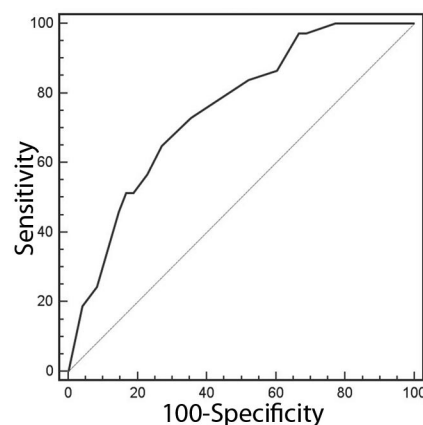
Note:—OR indicates odds ratio.

Table 4: Multivariate logistic regression analysis of favorable clinical outcome (mRS score, ≤ 2 at 90 days), controlling for confounders

Variable	Coefficient	P Value	OR	Lower CI of OR	Upper CI of OR
Intercept	0.4664	.8301			
CBS	0.4448	.0089	1.560	1.118	2.177
Recanalization	1.6106	.0149	5.006	1.368	18.312
NIHSS score at presentation	−0.1734	.0025	0.841	0.751	0.941
Age	−0.0588	.0181	0.943	0.898	0.990

NIHSS scores, achieve a good clinical outcome, and have smaller final infarct size. Recanalization rates are also higher following intravenous rtPA in patients with smaller clot extent. A CBS threshold of > 6 has a modest sensitivity and specificity and could be considered an adjunct to other imaging and clinical features, including baseline NIHSS and ASPECTS. CS predicts final infarct size but does not independently predict clinical outcome. CBS and CS demonstrate high interobserver reliability.

Many stroke physicians rely predominantly on clinical data such as baseline NIHSS score and time of symptom onset

**Fig 3.** ROC for CBS prediction of good clinical outcome (mRS score, ≤ 2). A threshold of > 6.5 was found with an AUC of 0.73 (95% CI, 0.62–0.82; $P = .0001$).**Table 5: Group dichotomization by ROC-defined CBS threshold of more than 6**

Parameter	CBS ≤ 6 (n = 41)	CBS > 6	P Value
Age, mean \pm SD	68 (12)	71 (15)	.18
ASPECTS, median (IQR)	6 (3.5–7.5)	9 (6–10)	<.0001
Presenting NIHSS score, median (IQR)	18 (14.5–21)	13 (6.25–0.5)	.009
Time to scanning (min), mean \pm SD	122 \pm 63	137 \pm 20	.28
Time to rtPA (min), mean \pm SD	142 \pm 51	142 \pm 26	.79
Post-rtPA recanalization (No.) (%)	14 (44%)	20 (71%)	.04
Hyperglycemia (No.) (%)	6 (14.6%)	5 (11.4%)	.75
Hypertension (No.) (%)	9 (22.0%)	13 (29.5%)	.47
CS, median (IQR)	2 (1–2.5)	2.5 (2–3)	.005
CBF (cm ³), mean \pm SD	119 \pm 47	78 \pm 51	<.0001
CBV (cm ³), mean \pm SD	49 \pm 39	29 \pm 35	.003
MTT (c cm ³), mean \pm SD	119 \pm 43	76 \pm 51	.0001
rtPA dose (mg), mean \pm SD	61 \pm 18	60 \pm 14	0.21
Final infarct size (cm ³), mean \pm SD	179 \pm 130	58 \pm 98	<.0001
mRS, median (IQR)	4 (3–6)	2 (1–5)	.002
Parenchymal hemorrhage (No.) (%)	10 (24)	4 (9)	.05

Note:—ROC indicates receiver operating characteristic.

when deciding whether to perform thrombolysis in patients presenting with stroke-like symptoms within accepted treatment time windows. Imaging data are often limited to an NCCT to determine infarct extent and presence of hemorrhage. In stroke centers and recent trials, increasingly advanced CT- and MR imaging-based strategies are being con-

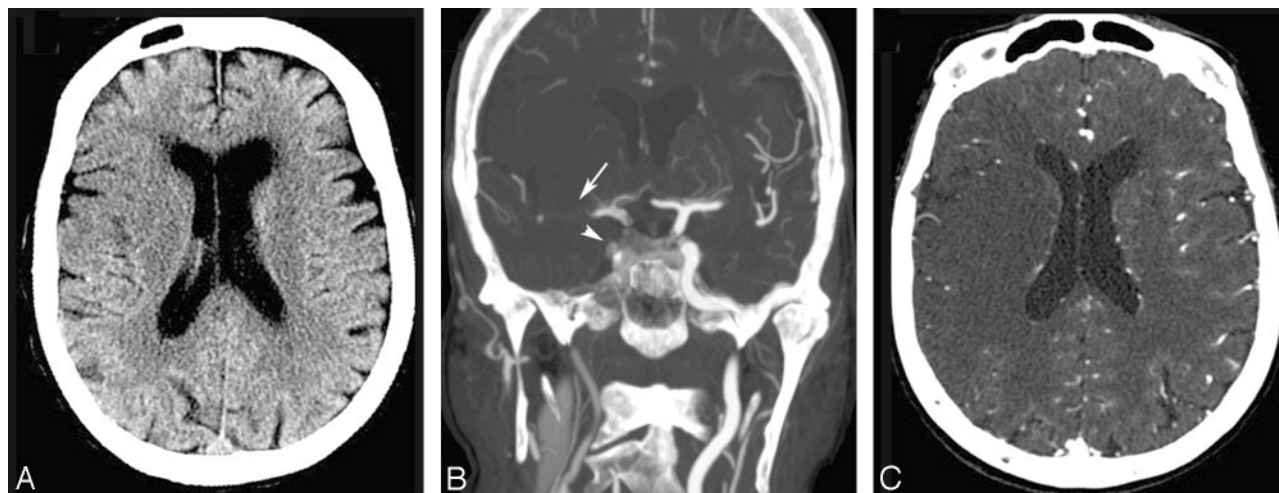


Fig 4. An 88-year-old woman presented with left-sided weakness treated with intravenous rtPA without recanalization. *A*, Noncontrast head CT scan demonstrates loss of gray-white matter differentiation within the right frontal lobe and caudate body with an ASPECTS of 3 and a baseline NIHSS score of 17. *B*, Coronal MIP image demonstrates poor contrast opacification of right supra- and infraclinoid ICAs (arrowhead) and M1 segment extending into the proximal M2 branches (arrow), scoring a CBS of 1. *C*, Axial CTA source image demonstrates a CS of 1. The patient was not treated with thrombolysis, was not recanalized, and achieved an mRS score of 4 at 90 days.

sidered to stratify patient risk better.^{28,29} A recent publication, for example, defined infarct core and mismatch sizes associated with poor outcome or showing little benefit following thrombolysis.²⁹ Proximal clot location is increasingly appreciated as an important determinant in outcome.^{3,30-32} Patients with a larger clot burden have been shown to have larger infarction volumes at baseline and poorer clinical outcomes.^{33,34} The CBS is designed to be weighted to vessel location, assigning higher points to the terminal ICA and proximal MCA locations. However, by distinguishing proximal and distal MCA and ICA locations and number of M2 branches affected, the score also accounts for clot extent (Fig 4).

An increasing number of established and emerging vessel recanalization techniques are available, including intravenous and intra-arterial thrombolysis, mechanical thrombectomy devices, and low-frequency pulsed-waved transcranial Doppler sonography.^{7,8,35,36} Recanalization rates are known to vary according to thrombus location, which is often a reflection of thrombus extent. Recently, occlusion length has been shown to be an important determinant of the efficiency and complication rates in mechanical thrombectomy.⁵ Higher rates of recanalization are often achieved with more invasive techniques, though at the cost of increased complications, including parenchymal hemorrhage³⁷ and vessel injury/rupture.³⁸ Rates of intravenous rtPA recanalization for isolated MCA occlusion are reported at 39%, compared with 9% for tandem ICA and MCA occlusion.⁹ These results are consistent with our observations that a lower CBS is associated with lower intravenous recanalization rates and suggest the need for a stratified treatment response according to the site of vessel occlusion and clot extent. A rapidly applied and reproducible scoring system that enables patient stratification in combination with established parameters such as ASPECTS, NIHSS score, and perfusion deficit is desirable. We propose that identification of patients with a larger thrombus extent could allow patient selection for more aggressive recanalization strategies in those centers where intra-arterial thrombolysis does not routinely follow intravenous rtPA use.

Several studies have established the importance of collat-

eral supply in the prediction of stroke outcome by means of final infarct volume and functional outcome.^{4,39,40} Without adequate collateral flow, irreversible neuronal damage occurs within minutes.⁴¹ Collateral supply helps to prevent or limit the extent of infarction until recanalization facilitates ischemic penumbra reperfusion.²¹ Collateral supply plays a pivotal role in the pathophysiology of cerebral ischemia but is difficult to quantify due to its diminutive and complex routes. Although somewhat crude, the CTA-derived CS provides a simple and reproducible assessment of collateral supply²² and confirms the association between smaller infarct volumes and good collateral supply.

Outcome results in this study are limited by their applicability only to patients treated with intravenous rtPA or receiving no thrombolytic treatment. Different thresholds may exist for patients in those centers that follow the Interventional Management of Stroke protocol, where patients are transferred immediately to the angiographic suite for intra-arterial intervention after a bridging dose of intravenous rtPA. This limitation reflects a lack of a dedicated neuroangiographic suite and difficulty in emergent anesthesia access in the authors' center. However, despite theoretically more rapid time to recanalization, the impact of an intra-arterial approach remains dependent on baseline infarction volume, which, in turn, is determined by the interplay between clot extent/location and collateral supply. The study is limited by heterogeneity in treatment, follow-up technique, and time to treatment, which are common limitations in a clinically managed cohort of patients. CT perfusion representation of initial infarct is limited to 8-cm coverage in this study; however, good correlation has been found between baseline CT and MR perfusion parameters and final infarct volume.^{42,43} Furthermore, given the constraints on imaging and the lack of continuous arterial monitoring, the exact time of recanalization within 24 hours of presentation cannot be determined with certainty.

In conclusion, many important radiologic and clinical predictors have been studied to help determine favorable clinical outcome in acute stroke. The factors are used clinically to stratify treatment options and enable the clinician to ensure

that patients and their relatives are adequately informed before the consent process.^{44–46} Clearly, no single parameter can predict outcome accurately, and it is clear that a predictive model must incorporate a number of easily derived and reliable factors. The importance of these factors varies temporally with increased time from ictus. We have demonstrated the correlation between a novel CTA-derived score of clot extent and CT-derived perfusion parameters. Furthermore, we show in an independent patient cohort that a baseline scan assessment of CS and CBS adds additional prognostic information. Whether these results could facilitate the choice of route and type of thrombolytic treatment remains to be determined.

Acknowledgments

We gratefully acknowledge the hard work, efficiency, and devotion of our imaging technicians, which made this work possible. We thank V. Li for assistance with data management.

References

- Khatiri P, Neff J, Broderick JP, et al. Revascularization end points in stroke interventional trials: revascularization versus reperfusion in IMS-I. *Stroke* 2005;36:2400–03
- Mattle HP, Arnold M, Georgiadis D, et al. Comparison of intraarterial and intravenous thrombolysis for ischemic stroke with hyperdense middle cerebral artery sign. *Stroke* 2008;39:379–83
- Somford DM, Nederkoorn P, Rutgers DR, et al. Proximal and distal hyperattenuating middle cerebral artery signs at CT: different prognostic implications. *Radiology* 2002;223:667–71
- Bozzao L, Fantozzi LM, Bastianello S, et al. Early collateral blood supply and late parenchymal brain damage in patients with middle cerebral artery occlusion. *Stroke* 1989;20:735–40
- Gralla J, Burkhardt M, Schroth G, et al. Occlusion length is a crucial determinant of efficiency and complication rate in thrombectomy for acute ischemic stroke. *AJNR Am J Neuroradiology* 2008;29:247–52
- Rosenthal ES, Schwamm LH, Roccatagliata L, et al. Role of recanalization in acute stroke outcome: rationale for a CT angiogram-based “benefit of recanalization” model. *AJNR Am J Neuroradiol* 2008;29:1471–75. Epub 2008 Jul 3
- del Zoppo GJ, Higashida RT, Furlan AJ, et al. PROACT: a phase II randomized trial of recombinant pro-urokinase by direct arterial delivery in acute middle cerebral artery stroke—PROACT Investigators. *Stroke* 1998;29:4–11
- del Zoppo GJ, Poeck K, Pessin MS, et al. Recombinant tissue plasminogen activator in acute thrombotic and embolic stroke. *Ann Neurol* 1992;32:78–86
- Kim YS, Garami Z, Mikulik R, et al, for the CLOTBUST Collaborators. Early recanalization rates and clinical outcomes in patients with tandem internal carotid artery/middle cerebral artery occlusion and isolated middle cerebral artery occlusion. *Stroke* 2005;36:869–71
- Manelfe C, Larrue V, von Kummer R, et al. Association of hyperdense middle cerebral artery sign with clinical outcome in patients treated with tissue plasminogen activator. *Stroke* 1999;30:769–72
- Tomsick T, Brott T, Barsan W, et al. Thrombus localization with emergency cerebral CT. *AJNR Am J Neuroradiology* 1992;13:257–63
- Camargo ECS, Furie KL, Singhal AB, et al. Acute brain infarct: detection and delineation with CT angiographic source images versus nonenhanced CT scans. *Radiology* 2007;244:541–48
- Aviv R, Shelef I, Malam S, et al. Early stroke detection and extent: impact of experience and the role of computed tomography angiography source images. *Clin Radiol* 2007;62:447–52
- Parsons MW, Pepper EM, Chan V, et al. Perfusion computed tomography: prediction of final infarct extent and stroke outcome. *Ann Neurol* 2005;58:672–79
- Murphy BD, Fox AJ, Lee DH, et al. White matter thresholds for ischemic penumbra and infarct core in patients with acute stroke: CT perfusion study. *Radiology* 2008;247:818–25
- Schaefer PW, Roccatagliata L, Ledezma C, et al. First-pass quantitative CT perfusion identifies thresholds for salvageable penumbra in acute stroke patients treated with intra-arterial therapy. *AJNR Am J Neuroradiology* 2006;27:20–25
- Murphy BD, Fox AJ, Lee DH, et al. Identification of penumbra and infarct in acute ischemic stroke using computed tomography perfusion-derived blood flow and blood volume measurements. *Stroke* 2006;37:1771–77
- Hendrikse J, Hartkamp MJ, Hillen B, et al. Collateral ability of the circle of Willis in patients with unilateral internal carotid artery occlusion: border zone infarcts and clinical symptoms. *Stroke* 2001;32:2768–73
- Liebeskind DS. Collateral circulation. *Stroke* 2003;34:2279–84
- Kim JJ, Fischbein NJ, Lu Y, et al. Regional angiographic grading system for collateral flow: correlation with cerebral infarction in patients with middle cerebral artery occlusion. *Stroke* 2004;35:1340–44
- Kucinski T, Koch C, Eckert B, et al. Collateral circulation is an independent radiological predictor of outcome after thrombolysis in acute ischemic stroke. *Neuroradiology* 2003;45:11–18
- Tan JC, Dillon WP, Liu S, et al. Systemic comparison of perfusion-CT and CT-angiography in acute stroke patients. *Ann Neurol* 2007;61:533–43
- Barber PA, Demchuk AM, Zhang J, et al. Validity and reliability of a quantitative computed tomography score in predicting outcome of hyperacute stroke before thrombolytic therapy. *Lancet* 2000;355:1670–74
- Puetz V, Dzialowski I, Hill MD, et al. Intracranial thrombus extent predicts clinical outcome, final infarct size and hemorrhagic transformation in ischemic stroke: the Clot Burden Score. *Int J Stroke* 2008;3:230–36
- Johnson JA, Wilson TA. A model for capillary exchange. *Am J Physiol* 1966;210:1299–303
- Cenic A, Nabavi DG, Craen RA, et al. Dynamic CT measurement of cerebral blood flow: a validation study. *AJNR Am J Neuroradiology* 1999;20:63–73
- Hossman K-A. Viability thresholds and the penumbra of focal ischemia. *Ann Neurol* 1994;36:557–65
- Hacke W, Albers G, Al-Rawi Y, et al. The Desmoteplase in acute Ischemic Stroke Trial (DIAS): a phase II MRI-based 9-hour window acute stroke thrombolysis trial with intravenous desmoteplase. *Stroke* 2005;36:66–73. Epub 2004 Nov 29
- Albers GW, Thijs VN, Wechsler L, et al, for the DEFUSE investigators. Magnetic resonance imaging profiles predict clinical response to early reperfusion: the diffusion and perfusion imaging evaluation for understanding stroke evaluation (DEFUSE) study. *Ann Neurol* 2006;60:508–17
- Torres-Mozqueda F, He J, Yeh IB, et al. An acute ischemic stroke classification instrument that includes CT or MR angiography: The Boston Acute Stroke Imaging Scale. *AJNR Am J Neuroradiology* 2008;29:1111–17. Epub 2008 May 8
- Smith WS, Tsao JW, Billings ME, et al. Prognostic significance of angiographically confirmed large vessel intracranial occlusion in patients presenting with acute brain ischemia. *Neurocrit Care* 2006;4:14–17
- Linfaite I, Rafael HL, Magdy S, et al. Clinical and vascular outcome in internal carotid artery versus middle cerebral artery occlusions after intravenous tissue plasminogen activator. *Stroke* 2002;33:2066–71
- Bastianello S, Pierallini A, Colonnese C, et al. Hyperdense middle cerebral artery CT sign. *Neuroradiology* 1991;33:207–11
- Kaste M, Waltimo O. Prognosis of patients with middle cerebral artery occlusion. *Stroke* 1976;7:482–85
- Flint AC, Duckwiler GR, Budzik RF, et al, for MERCI and Multi Merci Writing Committee. Mechanical Thrombectomy of Intracranial Internal Carotid Occlusion: Pooled results of the MERCI and Multi MERCI Part I Trials. *Stroke* 2007;38:1274–80. Epub 2007 Mar 1
- Molina CA, Ribo M, Rubiera M, et al. Microbubble administration accelerates clot lysis during continuous 2-MH ultrasound monitoring in stroke patients treated with intravenous tissue plasminogen activator. *Stroke* 2006;37:425–429. Epub 2005 Dec 22
- Furlan A, Higashida R, Wechsler L, et al. Intra-arterial prourokinase for acute ischemic stroke: The PROACT II study—A randomized controlled trial. *Prolyse in Acute Cerebral Thromboembolism*. *JAMA* 1999;282:2003–11
- Smith WS, Sung G, Starkman S, et al. Safety and efficacy of mechanical embolectomy in acute ischemic stroke: Results of the MERCI trial. *Stroke* 2005;36:1432–38
- Harrison MJ, Marshall J. The variable clinical and CT findings after carotid occlusion: the role of collateral supply. *J Neurol Neurosurg Psychiatry* 1988;51:269–72
- Henderson RD, Eliasziw M, Fox AJ, et al. Angiographically defined collateral circulation and risk of stroke in patients with severe carotid artery stenosis: North American Symptomatic Carotid Endarterectomy Trial (NASCET) Group. *Stroke* 2000;31:128–32
- Astrup J, Siesjo BK, Symon L. Thresholds in cerebral ischemia: the ischemic penumbra. *Stroke* 1981;12:723–25
- Schramm P, Schellinger PD, Klotz E, et al. Comparison of perfusion computed tomography angiography source images with perfusion-weighted imaging and diffusion-weighted imaging in patients with acute stroke of less than 6 hours' duration. *Stroke* 2004;35:1652–8
- Wintermark M, Reichhart M, Cuisenaire O, et al. Comparison of admission perfusion computed tomography and qualitative diffusion- and perfusion-weighted magnetic resonance imaging in acute stroke patients. *Stroke* 2002;33:2025–31
- Jorgensen HS, Reith J, Nakayama H, et al. What determines good recovery in patients with the most severe strokes? The Copenhagen Stroke Study. *Stroke* 1999;30:2008–12
- Demchuk AM, Buchan AM. Predictors of stroke outcome. *Neurol Clin* 2000;19:455–73
- Tei H, Uchiyama S, Usui T. Predictors of good prognosis in total anterior circulation infarction within 6 hours after onset under conventional therapy. *Acta Neurol Scand* 2006;113:301–06