



## Get Clarity On Generics

Cost-Effective CT & MRI Contrast Agents

 **FRESENIUS  
KABI**

[WATCH VIDEO](#)

# AJNR

## **Diagnostic Value of Multidetector-Row CT Angiography in the Evaluation of Thrombosis of the Cerebral Venous Sinuses**

J. Linn, B. Ertl-Wagner, K.C. Seelos, M. Strupp, M. Reiser, H. Brückmann and R. Brünig

This information is current as of August 9, 2025.

*AJNR Am J Neuroradiol* 2007, 28 (5) 946-952  
<http://www.ajnr.org/content/28/5/946>

ORIGINAL  
RESEARCH

J. Linn  
B. Ertl-Wagner  
K.C. Seelos  
M. Strupp  
M. Reiser  
H. Brückmann  
R. Brüning

# Diagnostic Value of Multidetector-Row CT Angiography in the Evaluation of Thrombosis of the Cerebral Venous Sinuses

**BACKGROUND AND PURPOSE:** The diagnosis of cerebral venous and sinus thrombosis (CVST) as a rare but important cause of stroke is challenging. We aimed to investigate the diagnostic value of multidetector-row CT angiography (MDCTA) as a fast and cost-effective imaging tool in diagnosing CVST.

**MATERIALS AND METHODS:** Nineteen patients who presented with clinical symptoms of a possible CVST were included. All patients had received both MDCTA and MR imaging with venous MR-angiography. Three blinded readers were asked to identify the cerebral sinuses and veins in MDCTA and to evaluate the presence of CVST in MDCTA. Consensus reading with interpretation of the MR imaging served to establish the definite diagnosis.

**RESULTS:** The consensus reading revealed CVST in 10 of the 19 patients. With MDCTA, the venous sinuses could be identified in 99.2% and the cerebral veins in 87.6% of cases. The sensitivity and specificity of MDCTA for the diagnosis of CVST were 100%.

**CONCLUSION:** Our study demonstrates that MDCTA provides excellent sensitivity and specificity for the diagnosis of CVST. Further studies are needed to evaluate the diagnostic potential of MDCTA in specific subsets of the general entity of CVST such as cortical venous thrombosis, thrombosis of the cavernous sinus, and thrombosis of the internal cerebral veins.

Cerebral venous and sinus thrombosis (CVST) is a rare but important cause of stroke mostly affecting young adults.<sup>1</sup> The clinical presentation and course of CVST are highly variable.<sup>2</sup> Patients may present with signs and symptoms of an elevated intracranial pressure—such as headache, dizziness, nausea, visual disturbances<sup>3,4</sup>—with focal neurologic deficits including cranial nerve palsies or with seizures.<sup>5,6</sup> In contrast to arterial strokes, symptoms in CVST often develop subacutely and slowly.<sup>7–9</sup> Severe headache often constitutes the first symptom, occurring in 74%–90% of all patients<sup>6</sup>; however, the specificity of this symptom is low.<sup>2</sup> CVST should always be considered as a potential differential diagnosis in young and middle-aged patients with unusual or severe headache or with strokelike symptoms in the absence of the usual vascular risk factors, in patients with intracranial hypertension, and in patients with evidence of hemorrhagic infarcts on CT. The most commonly affected sinuses are the superior sagittal sinus, the transverse sinus, and the sigmoid sinus.<sup>1,4,5</sup>

During the past decade, greater awareness of the diagnosis, improved neuroimaging techniques, and more effective treatment have improved the outcome. However, the average delay from the onset of symptoms to the diagnosis is still 7 days.<sup>2,6</sup>

MR imaging with MR venography is currently considered the most sensitive noninvasive technique<sup>2,10,11</sup> for diagnosing CVST. However, MR imaging has several disadvantages, in that it requires expert radiologic judgment to avoid common diagnostic and technical pitfalls,<sup>12</sup> and moreover it is time consuming and not widely available, especially in the emergency setting. Cerebral catheter digital subtraction angiography (DSA) is not generally used in the primary diagnostic

decision-making process and is usually performed only if local thrombolysis is to be considered.<sup>2,3</sup>

The development of spiral CT has introduced CT angiographic imaging with possible acquisition during peak arterial or venous enhancement.<sup>12–14</sup> Spiral CT venography with single section systems, however, was limited with regard to both spatial and temporal resolutions. More recently, the introduction of multidetector-row CT has opened new frontiers for CT angiography offering higher spatial and temporal resolution.<sup>15–18</sup>

We therefore aimed to investigate the diagnostic value of multidetector-row CT angiography (MDCTA) in diagnosing CVST and compared it with MR venography as the reference standard that most closely reflects current practice.

## Methods

### Subjects

A data base search was performed to identify all patients who presented at our hospital with clinical signs and symptoms suggestive of a thrombotic occlusion of the cerebral veins or sinuses between June 2002 and December 2005. Inclusion criteria were signs and symptoms of suggestive CVST as stated by the referring neurologist (Table 1) and the performance of unenhanced CT, MDCTA, and MR imaging with venous MR angiography within 48 hours of symptom onset. Exclusion criteria were age less than 18 years, an inability to comply with either imaging method, and incomplete imaging protocols. Nineteen adult patients were identified. In 7 patients, an additional catheter DSA was also available. The average age of the patients included in the study was  $50.1 \pm 17.9$  years (range, 22–81 years). Thirteen patients were female and 6 were male.

### Imaging

Unenhanced CT and MDCTA were performed on a 4-, 16-, or 64-section multislice CT (Sensation 4, Sensation 16 or Sensation 64; Siemens Medical Solutions, Erlangen, Germany) under clinical routine conditions. Nine patients were investigated on the 4-detector system, 6 on the 16-row detector, and 4 on the 64-row detector system. As a standardized

Received May 2, 2006; accepted after revision August 13.

From the Departments of Neuroradiology (J.L., K.C.S., H.B.), Diagnostic Radiology (B.E.-W., M.R.), and Neurology (M.S.), University Hospital Munich, Grosshadern, Munich, Germany; and Department of Radiology (R.B.), Asklepios Klinik Barmbek, Hamburg, Germany.

Address correspondence to Jennifer Linn, Department for Neuroradiology, University Hospital Munich Grosshadern, Marchioninistrasse 15, 81377 Munich, Germany; e-mail: linn@nrad.de.

**Table 1: Demographic data, imaging, and diagnosis**

Patient	Age/Sex	Clinical Symptoms	Diagnosis	Site of Thrombosis	Venous Edema or Intracerebral Hemorrhage
1	37/f	Hemiparesis and sensory symptoms (l)	Infarction right middle cerebri artery		
2*	83/f	Headache	Sinus thrombosis	LTS; LSS	
3	47/f	Headache	Sinus thrombosis; drowsiness	SSS; RTS	
4	23/m	Headache; visual disturbances; aphasia	Sinus thrombosis	LTS; LSS	Edema
5	63/f	Headache; aphasia; hemiparesis (r)	Sinus thrombosis; postoperative state; cerebral amyloid angiopathy	SSS	Edema
6	42/m	Headache	Normal		
7	29/f	Headache	Sinus thrombosis; seizures	LTS; LSS	Edema; ICH
8	43/m	Headache	Normal		
9	35/f	Headache; drowsiness	Normal		
10	54/f	Headache; seizures	Sinus thrombosis	SSS; LTS	
11	22/f	Drowsiness; aphasia	Normal; seizures		
12	81/f	Headache; drowsiness	Postoperative state		
13	76/f	Headache; aphasia; drowsiness	Normal		
14	50/m	Seizures; headache	Sinus thrombosis	SSS; SS; RTS; LTS	Edema
15	74/f	Confusion; seizures	Normal		
16	52/m	Mental-status disorder	Sinus thrombosis	SSS; RTS; RSS	
17	62/m	Headache; sensory symptoms (l)	Sinus thrombosis	RTS	
18	62/f	Seizure	Infarction right middle cerebri artery		
19	36/f	Headache	Sinus thrombosis	SSS	

**Note:**—f indicates female; m, male; l, left-sided; r, right-sided; SSS, superior sagittal sinus; SS, straight sinus; RTS, right transverse sinus; LTS, left transverse sinus; RSS, right sigmoid sinus; LTS, left sigmoid sinus; ICH, intracerebral hemorrhage.

\*Excluded from analysis due to significant motion artifacts.

MDCTA protocol, the following parameters were used: 120 kV, 120–140 mAs, collimation =  $4 \times 1.0$  mm,  $16 \times 0.75$  mm, or  $64 \times 0.62$  mm, respectively. Venous catheters (18 gauge) were placed in the antecubital vein in all patients. Contrast agent (120 mL) with an iodine concentration of 300 mg/mL was applied after a delay of 35 seconds. Depending on the size of the catheter, a flow rate between 3 and 5 mL/s was chosen. Care was taken to avoid catheter rupture, and a physician was present during the injection. Maximum intensity projections (MIPs) were created for the entire region of interest in axial, coronal, and sagittal orientations with an increment of 3 mm.

MR imaging was performed on a 1.5T scanner (Magnetom Vision; Siemens Medical Solutions), including diffusion-weighted images (TR, 4200 ms; TE, 139 ms; section thickness, 5 mm; B-value, 1000), axial proton attenuation- and T2-weighted images, acquired as a dual-echo acquisition (TR, 2210 ms; TE1, 85 ms; TE2, 14 ms; section thickness, 6 mm), T1-weighted (TR, 665 ms; TE, 14 ms; section thickness, 6 mm), coronal fluid-attenuated inversion recovery (FLAIR) (TR, 7500 ms; TE, 74 ms; TI, 2500 ms; section thickness, 5 mm) sequence, and venous 2D time-of-flight (TOF) MR angiography (TR, 24 ms; TE, 5.6 ms; flip angle, 50°; section thickness, 3 mm) with superior arterial saturation pulses.

DSA series were performed on a biplanar DSA-unit with an image matrix of  $1024 \times 1024$  (Neurostar; Siemens Medical Solutions) including selective catheterizations of both internal carotid arteries and the dominant vertebral artery. Late venous phases were available in all DSA examinations.

### Image Interpretation

A standardized evaluation of the datasets was performed independently by 3 experienced readers, masked to all clinical data and patient identifying information except date of birth and examination date. Image interpretation was performed on a standard PACS workstation (Magic View VE42; Siemens Medical Solutions). Reading orders were randomized and a standardized evaluation form was used.

First, the readers were asked to assess the cases regarding the pres-

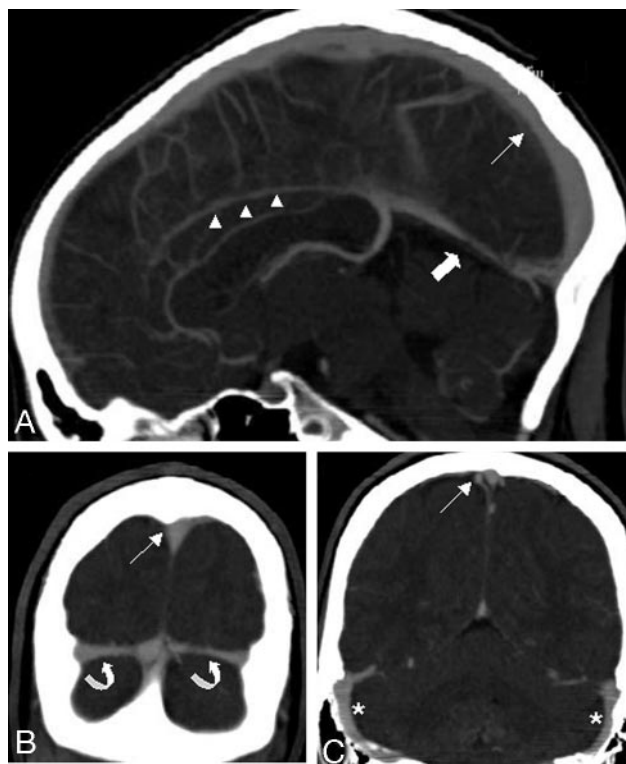
ence of artifacts and the quality of contrast enhancement in the venous vasculature on a 5-point scale (5, no artifacts/excellent contrast; 4, few artifacts/good contrast; 3, moderate amount of artifacts/moderate contrast; 2, pronounced artifacts/poor contrast; 1, images uninterpretable because of artifacts/insufficient contrast). The readers were then required to state whether the overall quality of the images was sufficient for diagnostic evaluation. Subsequently, they were asked to identify and evaluate the following venous structures: superior and inferior sagittal sinus, straight sinus, transverse and sigmoid sinuses, internal cerebral veins, vein of Galen, anastomotic veins of Labbé, and basal veins of Rosenthal. In addition, the presence of prominent arachnoid granulations in the sinuses was noted as well, based on their typical appearance as round, well-circumscribed structures with the same attenuation as CSF.

Next, the readers evaluated the dataset for the presence or absence of CVST. When a thrombosis was suspected by a reader, the involved sinuses and cerebral veins and, in addition, the presence of intracerebral venous infarction or venous hemorrhage, were noted. Moreover, other diagnoses were documented, if present. Finally, the diagnostic confidence about the presence or absence of a venous thrombosis was rated on a 5-point scale (5, absolutely certain; 4, very certain; 3, certain; 2, not very certain; 1, uncertain). In addition, readers were asked to state whether an additional imaging examination was required (yes/no) and, if yes, which technique they preferred (DSA or MR imaging).

After having evaluated all MDCTA datasets, all readers performed a consensus reading of the unenhanced CT scan, MR imaging, and, if available, DSA with full clinical and outcome information on the patient to obtain a reference standard.

### Statistical Analysis

All patient and image interpretation data were collected in a data base and analyzed with standard software (Excel and Access, Microsoft, Redmond, Wash). The consensus reading was used as a reference standard. Sensitivity and specificity parameters of MDCTA for the diagnosis of CVST were calculated.



**Fig 1.** Sagittal (A) and coronal (B, C) sections of MIP reformations in a 22-year-old woman (patient 11) demonstrate the normal venous anatomy: superior sagittal sinus (*thin arrow*), the inferior sagittal sinus (*arrowheads*), the straight sinus (*thick arrow*), and the transverse sinuses (*curved arrows*). No venous pathologic condition was present in this patient. The MDCTA was performed on a 64-row-detector system.

## Results

The reference standard consensus reading identified CVST in 10 patients. In 9 patients, no definite abnormalities were found in the cerebral veins or sinuses. Six patients had no pathologic intracerebral findings at all, 2 patients suffered from arterial infarctions, and 1 patient had undergone a previous craniotomy (for details concerning demographic data, clinical symptoms, and diagnosis, see Table 1).

The overall image quality of the MDCTA examinations and their 3D reconstructions was rated suitable for diagnostic interpretation in 18 patients. One case was deemed insufficient by all 3 readers because of pronounced motion artifacts and was excluded from further analyses. Eighteen patients (54 readings) were judged suitable for further evaluation. The presence of artifacts was generally judged as low, with a mean score of 4.0 (ie, few artifacts). The vessel contrast in the veins was generally assessed as good with a mean score of 4.1 (ie, good contrast).

On MDCTA, the readers were able to identify and evaluate the superior and inferior sagittal sinuses, the right and left transverse sinus, and the straight sinus in 100% (54/54 readings), the left sigmoid sinus in 96.3% (52/54 readings), and the right sigmoid sinus in 98.1% (53/54 readings; Fig 1). The internal cerebral veins could be identified and evaluated in 92.6% (50/54 readings), the vein of Galen in 98.1% (53/54 readings), the left vein of Labbé in 81.5% (44/54 readings), the right vein of Labbé in 79.6% (43/54 readings), and the left and right basal veins of Rosenthal in 90.7 (49/54 readings) and 88.9% (48/54 readings), respectively (Table 2).

In the blinded evaluation of the MDCTA, a CVST was di-

agnosed by the readers in 27 of 54 readings. In most cases, more than one sinus was affected (Table 2); involvement of the superior sagittal sinus was noted in 18 of 54 readings (Fig 2) and involvement of the straight sinus in 2 of 54 readings. Thrombosis of the left transverse sinus was found in 10 of 54 readings, of the left sigmoid sinus in 3 of 54 readings (Figs 2, 3, and 4). The right transverse and sigmoid sinuses were found to be affected in 10 of 54 and 2 of 54 readings, respectively. Intracerebral venous edema and/or venous hemorrhage were noted in 7 of 54 readings (Table 3).

There were no false-negative or -positive readings concerning the presence of a CVST in a patient. Thus, the sensitivity and specificity of MDCTA for the presence of a CVST was 100%. Although the readers agreed on the overall presence of a CVST, they varied in some cases in the evaluation of the extent of the CVST (Tables 2 and 4): 9 of a total of 741 evaluated veins and sinuses were rated false-negative, and 4 of 741 were rated false-positive concerning the involvement in a CVST. A CVST was correctly identified in 45 of the 741 evaluated veins and sinuses.

The mean diagnostic confidence about the presence or absence of a CVST was rated as 4.4 (very certain). Readers desired an additional imaging examination in 8 of 54 readings (Table 3).

In 9 readings (3 patients), the readers found diagnoses other than CVST (infarction in the territory of the right middle cerebral artery in 2 cases and postoperative state with osteoplastic trepanation in 1 case). Eighteen of 54 studies were rated as normal; prominent arachnoid granulations as normal variants were noted in 16 of 54 readings (Table 3).

## Discussion

The diagnosis of CVST has traditionally been made with conventional angiography (DSA).<sup>13,19</sup> More recently, DSA has been superseded by MR imaging techniques as the method of choice. MR imaging with MR venography is now commonly considered the noninvasive “gold standard” in diagnosing thrombosis of the cerebral venous sinuses<sup>2,5,7,8,20-23</sup> and also dominates the diagnostic arms in large international trials.<sup>6</sup> However, because CT is still the technique of choice to rule out intracranial hemorrhage in most institutions, it is tempting to assess a CVST by using the same technique. Therefore, we propose MDCTA as an alternative diagnostic measure in CVST, which is faster, more widely accessible, and more cost-effective than MR imaging.

With the development of helical CT technology, CTA offered a new imaging technique to visualize the cerebral vascular circulation. CTA allowed the visualization of the cerebral venous structures<sup>10,11,24-27</sup> and has been shown to have a high sensitivity for depicting the cerebral veins and sinuses compared with DSA.<sup>25</sup>

In the last decade, the role of CTA has increased tremendously with the advent of MDCTA, which enables a high spatial as well as a high temporal resolution.<sup>16-18,28-30</sup> Because of an increased spatial resolution in the z-plane, the acquisition of isotropic voxels became feasible, thus offering the option of high quality multiplanar and 3D reformations.

So far, the role of CTA in the diagnosis of CVST has only been evaluated in a few small series.<sup>14,24-27,31</sup> To the best of our knowledge, the diagnostic value of MDCTA in this disease has not been studied systematically and in a blinded fashion before.

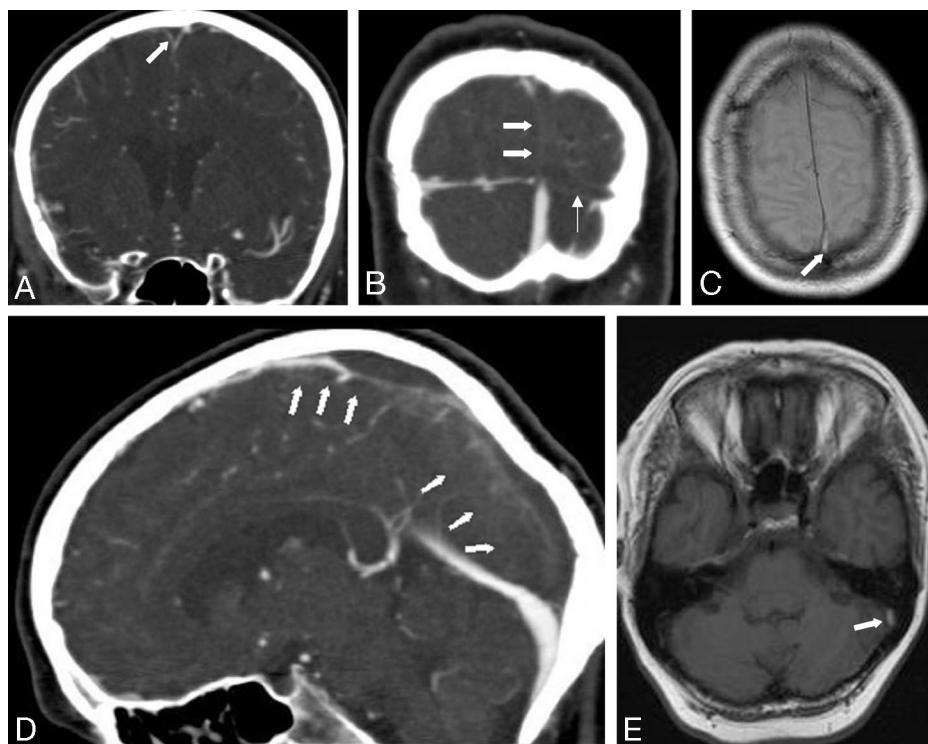
In our study, we demonstrated that the cerebral venous si-



**Table 2: Identification of venous sinus and cerebral veins in MSCTA and initial diagnosis of thrombosis made by the readers**

Sinus or Vein	Identified and Evaluated (n)		Thrombosis Diagnosed (n)			
	n	Positive (%)	True-Positive Total (R1/2/3)	False-Positive Total (R1/2/3)	True-Negative Total (R1/2/3)	False-Negative Total (R1/2/3)
Superior sagittal sinus	54	100	18 (6/6/6)	0 (0/0/0)	36 (12/12/12)	0 (0/0/0)
Inferior sagittal sinus	54	100	0 (0/0/0)	0 (0/0/0)	54 (18/18/18)	0 (0/0/0)
Straight sinus	54	100	2 (0/1/1)	0 (0/0/0)	51 (17/17/17)	1 (1/0/0)
Left transverse sinus	54	100	10 (3/4/3)	3 (1/2/0)	39 (13/12/14)	2 (1/0/1)
Right transverse sinus	54	100	10 (3/4/3)	0 (0/0/0)	42 (14/14/14)	2 (1/0/1)
Left sigmoid sinus	52	96.3	3 (1/2/0)	1 (1/0/0)	45 (14/16/15)	3 (1/0/2)
Right sigmoid sinus	53	98.1	2 (1/0/1)	0 (0/0/0)	50 (17/17/16)	1 (0/1/0)
Vein of Galen	53	98.1	0 (0/0/0)	0 (0/0/0)	53 (18/18/17)	0 (0/0/0)
Internal cerebral veins	50	92.6	0 (0/0/0)	0 (0/0/0)	50 (18/17/15)	0 (0/0/0)
Left basal vein of Rosenthal	49	90.7	0 (0/0/0)	0 (0/0/0)	49 (18/15/16)	0 (0/0/0)
Right basal vein of Rosenthal	48	88.9	0 (0/0/0)	0 (0/0/0)	48 (18/14/16)	0 (0/0/0)
Left vein of Labbé	44	81.5	0 (0/0/0)	0 (0/0/0)	44 (15/14/15)	0 (0/0/0)
Right vein of Labbé	43	79.6	0 (0/0/0)	0 (0/0/0)	43 (12/14/17)	0 (0/0/0)

**Note:**—n indicates number of readings; R, reader.



**Fig 2.** Coronal (A, B) and sagittal (D) sections of MIP reformations of a MDCTA performed on a 4-row-detector system in a 54-year old woman (patient 10) with an acute thrombosis of the superior sagittal sinus (thick arrows) and the left transverse sinus (thin arrow) show filling defects in the respective sinuses. Axial T1- (C) and PD-weighted (E) MR images demonstrate hyperintense signal intensity in the thrombosed left transverse sinus (C, arrow) and the superior sagittal sinus (E, arrow).

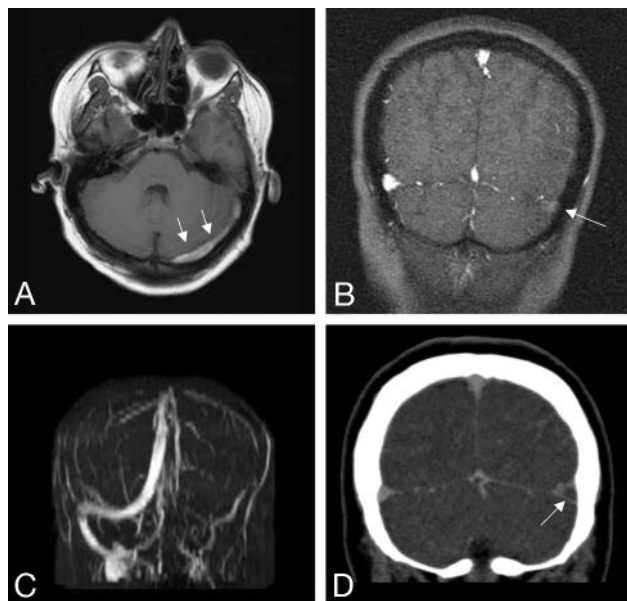
nuses could be easily and confidently visualized with MDCTA. In every MDCTA examination, there was complete visualization of the superior and inferior sagittal sinuses, the straight sinus, and the transverse sinuses in all patients. Furthermore, the sigmoid sinuses could also be visualized in more than 95% of the cases. These data suggest that MDCTA is at least equivalent to MR imaging with MR venography in the visualization of the cerebral sinuses.<sup>32</sup> Moreover, concerning the visualization of the inferior sagittal sinus and the nondominant transverse sinus, it seems to be even superior to MR venography. In our study, both transverse sinuses could be evaluated in each patient, whereas, according to the literature, MR venography shows flow gaps in the nondominant transverse sinus in more than 30%.<sup>32</sup>

Flow gaps in 2D TOF MR venography are mainly related to artifacts resulting from slow intravascular blood flow and in-plane flow and can potentially lead to difficulties in diagnosing

CVST. In contrast to MR venography, CT venography is not affected by flow artifacts and should therefore be superior to MR venography in identification of cerebral venous sinuses with slow flow or in-plane flow.<sup>33</sup>

In our study, MDCTA depicted the deep cerebral veins in 87.6%, a slightly lower percentage than that for the venous sinuses. Data on single-section helical CTA suggest that the sensitivity of CTA in the evaluation of these veins can be increased by using multiplanar reformations (MPR) instead of MIP reformations.<sup>25</sup> In the study by Wetzel et al,<sup>25</sup> MPR showed even higher sensitivity than DSA in depicting the basal veins of Rosenthal. The sensitivity of the MIP reformations in evaluation of the cerebral veins was comparable with our results, as was the reported frequency of depicting the basal veins of Rosenthal in DSA as found in the literature.<sup>34,35</sup>

We used sliding-thin-slab maximum intensity projections



**Fig 3.** A 23-year-old male patient presenting with headache, amnesic aphasia, and visual disturbances (patient 4). MR imaging and MDCTA, performed on a 4-row-detector system, demonstrate a thrombosis of the left transverse (arrows) and sigmoid sinuses.

A, Axial T1-weighted MR depicts hyperintense, thrombotic material in the left transverse sinus.

B, C, 2D time-of-flight MR venography shows no flow void in the left transverse and sigmoid sinuses.

D, Coronal sections of MIP reformations demonstrate a filling defect in the left transverse sinus.

(STS-MIP) in the postprocessing because recent data on MDCTA recommend this reformation technique for the evaluation of cerebral veins and arteries.<sup>36</sup> 3D reformation techniques, such as volume-rendering techniques might further increase the diagnostic value of the MS-CTA.<sup>36,37</sup> However, we propose STS-MIP reformations for routine clinical settings because they are widely available and can be created directly at the scanner console in a short time span.<sup>36</sup> Moreover, the cross-sectional nature of the data remain preserved in the STS approach. In addition, this approach facilitates the viewing of the entire dataset by scrolling through the cross-sectional slabs, whereas data are lost in the cleavage process of volume-rendering techniques.

Published data on MR evaluation of the cerebral veins are conflicting. While Ayanzen et al<sup>32</sup> found the vein of Galen and the internal cerebral veins in every MR venography and the basal veins of Rosenthal and the anastomotic veins of Labbé in more than 90%, others found a low sensitivity of TOF-MR venography for small vessels, especially those with slow flow.<sup>33,38,39</sup> We performed 2D-TOF MR venography in our study because it is most widely used in clinical routine settings. Promising new MR and MR angiography techniques such as multiphase contrast enhanced MR angiography at 3T<sup>40</sup> might further improve the value of MR in the evaluation of the cerebral veins and sinuses.

In our study, MDCTA reached 100% sensitivity and specificity in the diagnosis of a CVST. These data suggest that MDCTA might be at least equivalent to MR imaging with MR venography in the diagnosis of a thrombosis of the cerebral sinuses.<sup>5,14</sup> We included no cases with CVST involving the deep cerebral veins in this study. Furthermore, the cortical veins were not analyzed in this study. Thus, further studies are now needed to evaluate the diagnostic potential of MDCTA in specific subsets of the general

entity of CVST, such as cortical venous thrombosis, thrombosis of the cavernous sinus, and thrombosis of the deep cerebral veins.

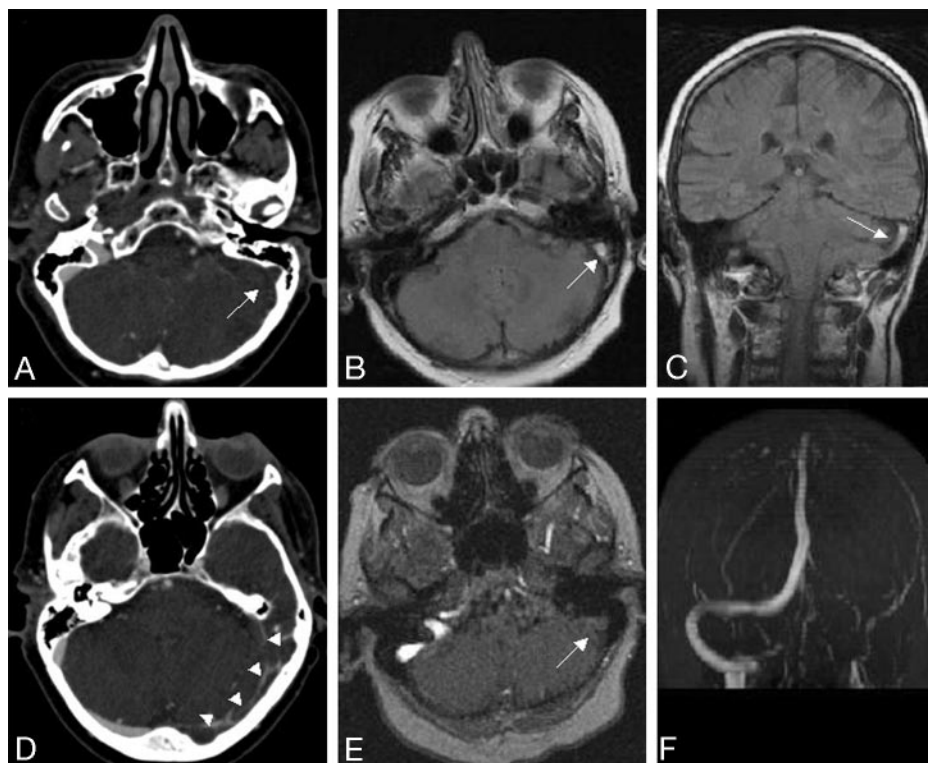
Major advantages of MDCTA are the very short duration of the examination and the possibility of simultaneous visualization of the cerebral arterial and venous system by application of a single bolus of contrast medium.<sup>27,41</sup> This is of benefit especially in the emergency setting, if the diagnosis is unclear. MR imaging and MR angiographic techniques require long examination times and good cooperation of patients to avoid serious motion artifacts. Thus, they are difficult to use in patients with impaired consciousness, as is common in CVST.<sup>12</sup>

Furthermore, MR imaging of cerebral venous structures is associated with several diagnostic pitfalls that make the diagnosis of CVST<sup>5,12</sup> difficult: first, a subacute, hyperintense thrombus could potentially simulate flow in T1-weighted TOF MR venography.<sup>10</sup> Second, lack of flow in a vessel might be caused by acute thrombosis, but might also be due to hypoplasia or aplasia of the respective vessel.<sup>5,12,32</sup> Therefore, a multisequence, time-consuming MR protocol is often needed to demonstrate a thrombosis. As thrombotic material has very complex signal intensity characteristics in MR imaging, expert knowledge is required to interpret these data correctly.<sup>12</sup> MDCTA, conversely, visualizes thrombotic material indirectly by demonstration of contrast-filling defects, and it is therefore much less prone to flow artifacts. Other potential causes of filling defects such as prominent arachnoid granulations could be identified reliably by the readers and did not lead to false-positive results concerning the diagnosis of CVST. Venous edema and intracerebral hemorrhage as sequelae of a thrombosis were recognized in 4 patients on our MDCTA datasets. Less pronounced, smaller edema was missed by all readers in 2 cases. The additional evaluation of the unenhanced CT scan might help to improve the detection rate of parenchymal changes, though parenchymal changes are seen more readily on MR imaging than on CT.<sup>5,42,43</sup>

Drawbacks of MDCTA are the irradiation doses arising from this examination and the risks of contrast nephropathy. However, analysis of radiation doses have shown that the radiation dose of a MDCTA performed with 120 kV is less than 1 mSv (less than the mean effective dose of an unenhanced CT scan).<sup>44</sup> Special attention must be drawn to contraindications to iodinated contrast media, such as a known allergy to iodinated contrast agents, elevated renal function tests, or hyperthyroidism.

Special attention must be drawn to 2 possible sources of false-negative results in detecting a CVST in MDCTA. First, in the acute setting, a spontaneously hyperattenuated clot could be mistaken for an enhanced sinus; this phenomenon is referred to as the "cord sign." Data in the literature concerning the presence of this "cord sign" are somewhat contradictory. Although some investigators found the cord sign signifying acute thrombus in 56% patients with CVST who underwent unenhanced head CT,<sup>12</sup> in a similar study, the thrombus was demonstrated in only 25% cases on unenhanced CT scans.<sup>45</sup> To assess this problem as a source of false-negative results, it should be absolutely recommended to analyze the unenhanced CT as well as the MDCTA images to establish the diagnosis of a CVST. Second, in the chronic state of a CVST an older, organized clot can show enhancement after contrast administration and may not produce a filling defect and might thus be missed.

Some limitations of our study need to be taken into account when interpreting the data. First, the sample size of our study was



**Fig 4.** MDCTA and MR images of a 29-year-old female patient (patient 7) presenting with headache and seizures. Transversal sections of MIP reformations of the MDCTA (A, D) demonstrate filling defects in the left transverse (arrowheads) and sigmoid sinuses (arrow). Axial PD-weighted (B) and coronal fluid-attenuated inversion recovery (FLAIR) images (C) depict hyperintense, thrombotic material in the left sigmoid sinus.

E, F, 2D time-of-flight MR venography shows no flow void in the left transverse and sigmoid sinuses.

**Table 3: Presence of venous edema, intracerebral hemorrhage, and prominent Pacchioni granulations and diagnostic confidence**

Patient	Venous edema and/or ICH diagnosed (n readings)				Prominent Pacchioni Granulations Found (in n of n readings)	Diagnostic Confidence* (R 1/2/3)	Additional Imaging Wanted** (R 1/2/3)
	True-Pos.	False-Pos.	True-Neg.	False-Neg.			
1	0	0	3	0	Yes (2/3)	5/4/3	-/-/-
2†							
3	3	0	0	0	Yes (2/3)	5/4/5	-/-/-
4	2	0	0	1	No	5/5/4	-/-/-
5	0	0	0	3	No	4/5/4	-/-/-
6	0	0	3	0	Yes (2/3)	5/4/4	-/-/-
7	2	0	0	1	No	5/5/2	-/-/ MRI
8	0	0	3	0	Yes (2/3)	5/5/4	-/-/-
9	0	0	3	0	Yes (2/3)	5/5/5	-/-/-
10	0	0	3	0	No	5/3/4	-/-/-
11	0	0	3	0	No	5/3/4	-/ MRI/-
12	0	0	3	0	Yes (1/3)	5/5/4	-/-/-
13	0	0	3	0	Yes (1/3)	5/3/4	-/-/ MRI
14	0	0	0	3	No	3/5/4	MRI/-/ MRI
15	0	0	3	0	Yes (2/3)	5/5/4	-/-/-
16	3	0	0	0	Yes (1/3)	5/5/5	-/-/-
17	0	0	3	0	No	3/5/3	MRI/-/ cCT
18	0	0	3	0	No	5/4/5	-/ MRI/-
19	0	0	3	0	Yes (1/3)	4/4/4	-/-/-

**Note:**—n indicates number; R, reader; cCT native cranial CT.

\* Rated on a 5-point scale (1, absolutely; 2, very; 3, intermediate; 4, not very certain; 5, uncertain).

\*\* No additional imaging wanted.

† Excluded from analysis due to significant motion artifacts.

relatively small. Because of this limited number of patients, we could not compare the different scanners or look for significant differences between 4-, 16-, and 64-MDCTA examinations. However, CVST is a rare disease, thus rendering the recruitment of large patient populations difficult, and because the 19 patients were assessed by multiple blinded reads, this may not necessarily limit the scope of our observations. Our data should serve as the basis for larger, possibly multicenter studies.

In addition, all readings were performed using only the MDCTA and not a corresponding unenhanced cranial scan. We chose this approach to concentrate on the relative diagnostic value of the CTA itself and to minimize potential confounding factors. However, in the routine clinical situation, an unenhanced cranial CT scan is usually available as well, which may further enhance the diagnostic potential of MDCTA and minimize the number of false-negative results.



**Table 4: Detailed synopsis of false-positive and false-negative readings**

Patient	False-Positive Readings			False-Negative Readings		
	R1	R2	R3	R1	R2	R3
1						
2*						
3						
4						LSS
5	LTS, LSS	LTS				
6						
7				LSS		LSS
8						
9						
10				LTS		
11						
12						
13						
14				SS, RTS		RTS, LTS
15						
16						
17		LTS			RSS	
18						
19						

**Note:**—No entry indicates no false-positive or -negative readings; R, reader; SS, straight sinus; RTS, right transverse sinus; LTS, left transverse sinus; RSS, right sigmoid sinus; LSS, left sigmoid sinus.

\* Excluded from analysis due to significant motion artifacts.

## Conclusion

This study demonstrates that the cerebral venous sinuses can be easily and confidently visualized with MDCTA. MDCTA was found to have high sensitivity and specificity parameters in diagnosing thrombosis of the cerebral sinuses. We propose that MDCTA is a fast, widely accessible, and cost-effective alternative to MR imaging, especially in the emergency setting, if MR is not feasible or in cases in which the results of MR are ambiguous and there is still a clinical suspicion of CVST.

## References

- Bogousslavsky J, Pierre P. Ischaemic stroke in patients under age 45. *Neurol Clin* 1992;10:113–24
- Stam J. Thrombosis of the cerebral veins and sinuses. *N Engl J Med* 2005;352:1791–98
- Tehindrazanarivelo AD, Bousser MG. Idiopathic intracranial hypertension and cerebral dural sinus thrombosis. *Am J Med* 1994;97:200–01
- Leker RR, Steiner I. Features of dural sinus thrombosis simulating pseudotumour cerebri. *Eur J Neurol* 1999;6:601–04
- Renowden S. Cerebral venous sinus thrombosis. *Eur Radiol* 2004;14:215–26
- Ferro JM, Canhao P, Stam J, et al. Prognosis of cerebral vein and dural sinus thrombosis: results of the International Study on Cerebral Vein and Dural Sinus Thrombosis (ISCVT). *Stroke* 2004;35:664–70
- Einhaupl KM, Villringer A, Meister W, et al. Heparin treatment in sinus venous thrombosis. *Lancet* 1991;338:597–600
- Strupp M, Einhaupl KM, Bousser M-G. Cerebral venous and sinus thrombosis. In: Brandt T, Caplan L, Dichgans J, et al, eds. *Neurological Disorders: Course and Treatment*, 2nd ed. San Diego, Academic Press; 2003:447–60
- Ameri A, Bousser MG. Cerebral venous thrombosis. *Neurol Clin* 1992;10:87–111
- Lafitte F, Boukobza M, Guichard JP, et al. MRI and MRA for diagnosis and follow-up of cerebral venous thrombosis (CVT). *Clin Radiol* 1997;52:672–79
- Dormont D, Anxionnat R, Evrard S, et al. MRI in cerebral venous thrombosis. *J Neuroradiol* 1994;21:81–99
- Teasdale E. Cerebral venous thrombosis: making the most of imaging. *J R Soc Med* 2000;93:234–37
- Casey SO, Alberico RA, Patel M, et al. Cerebral CT venography. *Radiology* 1996;198:163–70
- Ozsvath RR, Casey SO, Lustrin ES, et al. Cerebral venography: comparison of CT and MR projection venography. *AJR Am J Roentgenol* 1997;169:1699–707
- Fuchs T, Kachelriess M, Kalender WA. Technical advances in multi-slice spiral CT. *Eur J Radiol* 2000;36:69–73

- Dullawar VA. Multi-slice CT angiography: a practical guide to CT angiography in vascular imaging and intervention. *Br J Radiol* 2004;77:27–38
- Rubin GD. Techniques for performing multidetector-row computed tomographic angiography. *Tech Vasc Interv Radiol* 2001;4:2–14
- Prokop M. Multislice CT angiography. *Eur J Radiol* 2000;36:86–96
- Yasargil MG, Damur M. Thrombosis of the cerebral veins and dural sinuses. In: Newton TH, Potts DJ, eds. *Radiology of the Skull and Brain. Vol 2. Angiography*. St. Louis: Mosby-Year Book; 1974:2375–400
- Isensee C, Reul J, Thron A. Magnetic resonance imaging of thrombosed dural sinuses. *Stroke* 1994;25:29–34
- Vogl TJ, Bergman C, Villringer A, et al. Dural sinus thrombosis: value of venous MR angiography for diagnosis and follow-up. *AJR Am J Roentgenol* 1994;162:1191–98
- Yuh WT, Simonson TM, Wang AM, et al. Venous sinus occlusive disease: MR findings. *AJNR Am J Neuroradiol* 1994;15:309–16
- Connor SE, Jarosz JM. Magnetic resonance imaging of cerebral venous sinus thrombosis. *Clin Radiol* 2002;57:449–61
- Hagen T, Bartylla K, Waziri A, et al. The place of CT angiography in the diagnosis of cerebral sinus thrombosis. *Radiologe* 1996;36:859–66
- Wetzel SG, Kirsch E, Stock KW, et al. Cerebral veins: Comparative study of CT venography with intraarterial digital subtraction angiography. *AJNR Am J Neuroradiol* 1999;20:249–55
- Hunerbein R, Reuter P, Meyer W, et al. CT angiography of cerebral venous circulation: anatomical visualization and diagnostic pitfalls in interpretation. *Rofo* 1997;167:612–18
- Klingebiel R, Busch M, Böhner G, et al. Multi-slice CT angiography in the evaluation of patients with acute cerebrovascular disease—a promising new diagnostic tool. *J Neurol* 2002;249:43–49
- Rubin GD, Shiau MC, Schmidt AJ, et al. Computed tomographic angiography: historical perspective and new state-of-the-art using multi-row helical computed tomography. *J Comput Assist Tomogr* 1999;23(Suppl. 1):83–90
- Klingenbeck-Regn K, Schaller S, Flohr T, et al. Subsecond multi-slice-computed tomography: basics and applications. *Eur J Radiol* 1999;31:110–24
- Ertl-Wagner B, Bruening R, Blume J, et al. Prospective, multireader evaluation of image quality and vascular delineation of multislice CT angiography of the brain. *Eur Radiol* 2005;15:1051–59
- Majoie CB, van Straten M, Venema HW, et al. Multisection CT venography of dural sinuses and cerebral veins by using matched bone elimination. *AJNR Am J Neuroradiol* 2004;25:787–91
- Ayanzen RH, Bird CR, Keller PJ, et al. Cerebral MR venography: normal anatomy and potential diagnostic pitfalls. *AJNR Am J Neuroradiol* 2000;21:74–78
- Kiliç T, Ozduman K, Çavdar S, et al. The galenic venous system: Surgical anatomy and its angiographic and magnetic resonance venographic correlations. *Eur J Radiol* 2005;56:212–19
- Stein RL, Rosenbaum AE. Deep supratentorial veins. In: Newton TH, Potts DJ, eds. *Radiology of the Skull and Brain. Vol 2. Angiography*. St. Louis: Mosby-Year Book; 1974:208–11
- Huber P. *Zerebrale Angiographie für Klinik und Praxis*. 3rd ed. Stuttgart, Germany: Thieme; 1979:208–11
- Ertl-Wagner B, Bruening R, Blume J, et al. Relative value of sliding-thin-slab multiplanar reformations and sliding-thin-slab maximum intensity projections as reformatting techniques in multisection CT angiography of the cervicocranial vessels. *AJNR Am J Neuroradiol* 2006;27:107–13
- Kallmes DF, Evans AJ, Woodcock RJ, et al. Optimization of parameters for the detection of cerebral aneurysms: CT angiography of a model. *Radiology* 1996;200:403–05
- Kirchhof K, Welzel T, Jansen O, et al. More reliable noninvasive visualization of the cerebral veins and dural sinuses: comparison of three MR angiographic techniques. *Radiology* 2002;224:804–10
- Liauw L, van Buchem MA, Spilt A, et al. MR angiography of the intracranial venous system. *Radiology* 2000;214:678–82
- Cashen TA, Carr JC, Shin W, et al. Intracranial time-resolved contrast-enhanced MR angiography at 3T. *AJNR Am J Neuroradiol* 2006;27:822–29
- Klingebiel R, Zimmer C, Rogalla P, et al. Assessment of the arteriovenous cerebrovascular system by multi-slice CT. A single-bolus, monophasic protocol. *Acta Radiol* 2001;42:560–62
- Tsai FY, Wang AM, Matovich V, et al. MR staging of acute dural sinus thrombosis: correlation with venous pressure measurements and implications for treatment and prognosis. *AJNR Am J Neuroradiol* 1995;16:1021–29
- Padayachee TS, Bingham JB, Graves MJ. Dural sinus thrombosis. Diagnosis and follow up by magnetic resonance, angiography and imaging. *Neuroradiology* 1991;33:165–67
- Ertl-Wagner B, Hoffmann RT, Bruening R, et al. Multi-slice CT angiography of the brain at various kilovoltage settings. *Radiology* 2004;231:528–35
- Virapongse C, Cazenave C, Quisling R, et al. The empty delta sign: frequency and significance in 76 cases of dural sinus thrombosis. *Radiology* 1987;162:779–85