



Discover Generics

Cost-Effective CT & MRI Contrast Agents



FRESENIUS
KABI

[VIEW CATALOG](#)

AJNR

Tophaceous gout of the lumbar spine mimicking an epidural abscess: MR features.

V M Bonaldi, H Duong, M R Starr, L Sarazin and J Richardson

AJNR Am J Neuroradiol 1996, 17 (10) 1949-1952

<http://www.ajnr.org/content/17/10/1949>

This information is current as
of September 1, 2025.

Tophaceous Gout of the Lumbar Spine Mimicking an Epidural Abscess: MR Features

Vincent M. Bonaldi, Hoang Duong, Michael R. Starr, Laurent Sarazin, and John Richardson

Summary: We present the MR findings in a case of tophaceous gout of the lumbar spine with cauda equina compression, mimicking an epidural abscess. The diagnosis was clinically unsuspected and confirmed at laminectomy. Tophus material in the paraspinal soft tissues appeared intermediate in signal intensity and showed heterogeneous contrast enhancement.

Index terms: Spine, abscess; Spine, magnetic resonance

Involvement of the spine by tophaceous gout is an uncommon occurrence; we found 23 reported cases (1–23), of which 16 resulted in spinal cord or radicular compression, necessitating surgical decompression (2, 6–11, 13–16, 18–21, 23). In many instances, the preoperative diagnosis was unsuspected despite the fact that the majority of patients had chronic polyarticular gouty arthritis. Two previous publications have documented cord compression by gouty tophus on magnetic resonance (MR) images (21, 23). Our case demonstrates cauda equina compression with MR features that simulate an epidural abscess.

Case Report

A 76-year-old man with long-standing peripheral gouty arthritis had a 1-week history of persistent fever and severe lower back pain. Physical examination revealed a fever of 40°C and marked tenderness to palpation on the right side of the lower back and flank. Multiple tophi were also noted over the elbows, hands, left knee, and both big toes. Purulent discharge emanated from the right big toe, raising the possibility of sepsis from this source. Blood cultures were found to be positive for staphylococcus species and the patient was subsequently started on intravenous ampicillin and gentamicin. Computed tomography (CT) of the lumbar spine showed spinal stenosis at the L3-4 and L4-5 levels. Laboratory investigations revealed leukocytosis (cell count of $11.4 \times 10^9/L$) and a serum uric acid level

of 491 $\mu\text{mol/L}$ (normal range, 202 to 416 $\mu\text{mol/L}$). Seventeen days after admission, despite continued antibiotic treatment and repeated negative cultures, the patient still had severe back pain and a low-grade fever but was neurologically intact.

A lumbar spine MR study showed an abnormal anterior epidural collection extending from the L-3 to the L-4 levels, compromising the spinal canal and causing cauda equina compression (Fig 1A and B). This collection was of soft-tissue intensity on the T1-weighted sequence and appeared relatively hyperintense on the T2-weighted images, particularly posterior to the L-3 vertebral body. Both L3-4 and L4-5 disks as well as the adjacent L-4 and L-5 vertebral endplates were abnormally hyperintense on the long-repetition-time sequence (Fig 1B). The intervertebral disk space at L3-4 was maintained, whereas at L4-5 it was moderately narrowed. After administration of contrast material, the collection appeared multiloculated with several zones showing marginal enhancement (Fig 1C and D). Focal enhancement was also noted at the posterior aspect of the L4-5 disk and in the adjacent vertebral endplates. These findings were highly suggestive of an infectious spondylodiskitis with an epidural abscess.

A laminectomy at the L3-4 and L4-5 levels did not reveal an abscess. Rather, a chalky granular sandlike substance was found scattered diffusely in the epidural and paraspinal soft tissues, including the bones, muscles, and ligaments. An L3-4 discectomy was performed and multiple open biopsy samples were taken from the adjacent locations. Gram stain of this material did not reveal bacteria, but polarizing microscopy later showed the presence of negatively birefringent uric acid crystals. Histologic examination disclosed a granulomatous infiltrate consisting of multinucleated giant cells and histiocytes surrounding an amorphous material, consistent with tophaceous gout (Fig 1E). The patient was subsequently treated with colchicine followed by allopurinol. The fever subsided and all antibiotics were discontinued. No further episode of fever was noted and the patient was discharged in stable condition.

Received October 5, 1995; accepted after revision February 27, 1996.

From the Department of Diagnostic Radiology, Montreal General Hospital, McGill University (V.M.B., H.D., L.S., J.R.), and the Department of Rheumatology, Anna Laberge Hospital (M.R.S.), Quebec, Canada.

Address reprint requests to H. Duong, MD, Department of Radiology, Columbia-Presbyterian Medical Center, Milstein Hospital Bldg, 8 S Knuckle, 177 Fort Washington Ave, New York, NY 10032.

AJNR 17:1949–1952, Nov 1996 0195-6108/96/1710–1949 © American Society of Neuroradiology

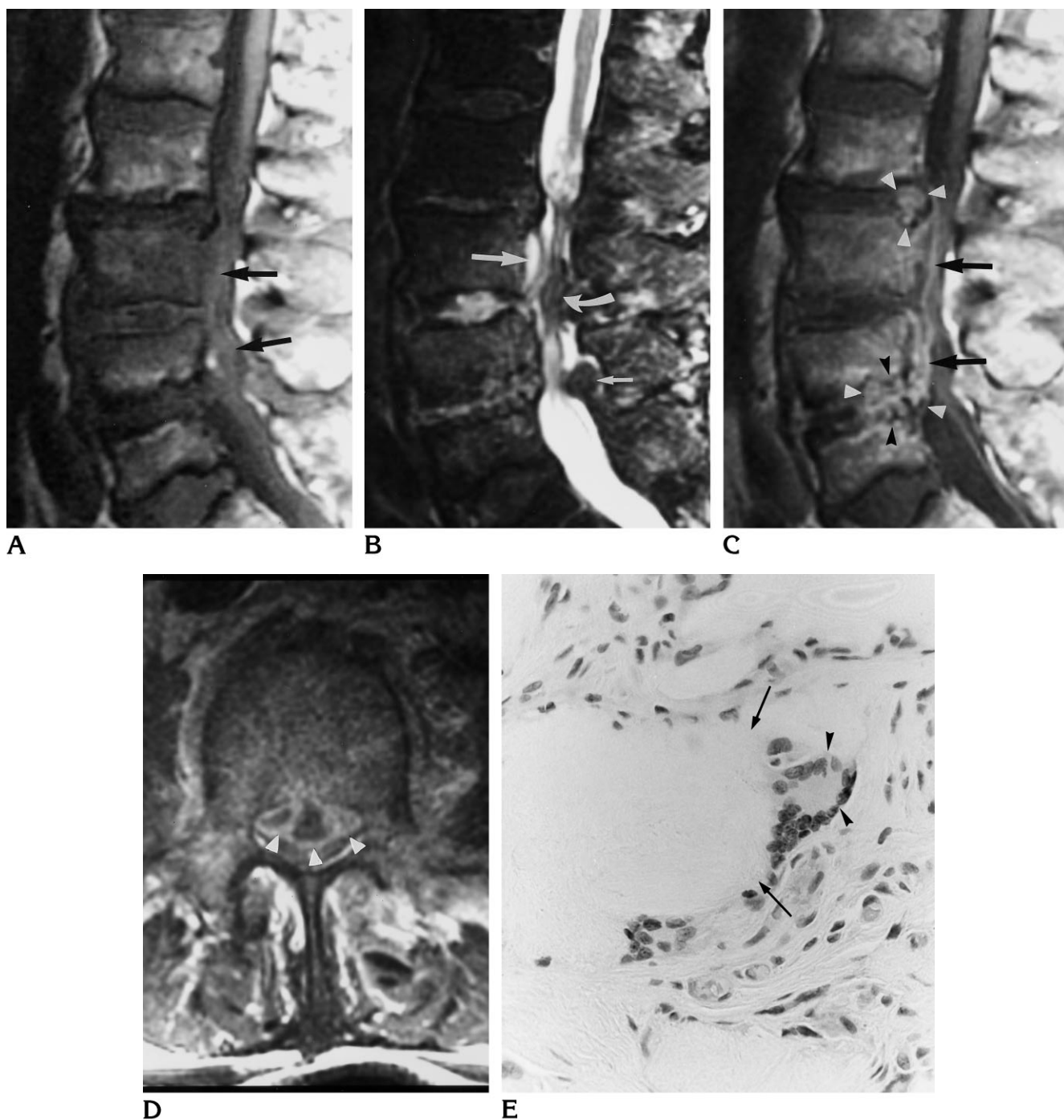


Fig 1. Seventy-six-year-old man with long-standing peripheral gouty arthritis and 1-week history of persistent fever and severe lower back pain.

A, Sagittal spin-echo T1-weighted (500/20 [repetition time/echo time]) MR image of the lumbar spine shows cauda equina compression by an epidural soft-tissue-intensity lesion at L-3 and L-4 (arrows). Note also herniation of the L2-3 and L4-5 disk and erosive changes at the L-4 and L-5 vertebral endplates.

B, Sagittal fast spin-echo T2-weighted (4000/102) MR image (echo train length, 8) of the lumbar spine shows abnormal hyperintense signal of the epidural collection at L-3 (long arrow) and of the L3-4 and L4-5 intervertebral disks. Note the hypointense appearance of the compressed roots of the cauda equina (curved arrow). The hypointense structure at the posterior aspect of the spinal canal at L4-5 represents partial volume averaging of the posterior elements (short arrow).

C, Contrast-enhanced sagittal spin-echo T1-weighted (500/20) MR image of the lumbar spine shows marginal enhancement of the epidural collection (arrows) and focal enhancement of the L2-3 and L4-5 disks and the L-4 and L-5 vertebral endplates (arrowheads). The L-5 vertebral body is mildly compressed.

D, Contrast-enhanced axial spin-echo T1-weighted (500/20) MR image of the lumbar spine at L-3 shows severe dural sac compression by the multiloculated epidural collection representing gouty tophaceous deposits (arrowheads).

E, Photomicrograph of biopsy specimen from the L2-3 disk shows a large giant cell (arrowheads) adjacent to a tophaceous deposit (arrows). Several other multinucleated giant cells are also present (original magnification $\times 200$).

Discussion

A radiologic description of gouty involvement of the spine was published in 1947 by Bauer and Klemperer (24) but the pathologic basis of these lesions was not established until the report by Kersley et al in 1950 (1). These authors described the autopsy findings of a case of cord compression due to atlantoaxial subluxation associated with bony destruction by gouty tophus. We found 22 additional cases in the literature, all proved at autopsy, by surgical laminectomy, or by percutaneous biopsy findings (2–23). Why urate crystals rarely accumulate in the spine as opposed to the appendicular skeleton is unclear. The pathogenesis of tophus deposition may relate to local tissue changes, which may differ in the spine and peripheral joints. It has been suggested that irrespective of the tissues affected, a previous injury or tissue necrosis is a prerequisite for urate deposition (25). Degenerative disease of the spine may also be a predisposing factor, as most cases involving the lumbar spine predominate at the lumbosacral junction. The prevalence of spine involvement in gout is, however, probably underestimated. Patients who may have asymptomatic tophi are not routinely imaged, and such lesions even if diagnosed are not pathognomonic. In addition, unlike peripheral gouty arthritis, the lack of readily available synovial fluid or biopsy material for demonstration of urate crystals renders the diagnosis of spinal gout more difficult.

Some inferences may be drawn from a review of the cases reported to date. The majority of patients (82%) have chronic polyarticular tophaceous gout and hyperuricemia, with a mean duration of disease of 14 years (range, 0 to 35 years). These findings are independent of age and sex. There is a wide spectrum of clinical symptoms, varying from absence of to acute quadriplegia (9). Many patients experience back pain, but this could be attributed to coexisting degenerative disease rather than direct spinal involvement by gouty arthritis. All segments of the spine are affected in approximately equal distribution. The frequency of neural compromise is 73%, and, in most cases, this leads to an acute neurologic deficit requiring emergency surgical decompression. In cases of isolated pain, colchicine therapy produces rapid relief of the symptoms (5, 22). Our case is similar to the one reported by Wald et al (8), in that the patient was neurologically intact de-

spite imaging evidence of cauda equina compression.

Radiographic features of spinal gout are well documented and include vertebral erosions (mainly at the diskovertebral junction), bone destruction causing joint subluxation, spinal deformity, pathologic fractures, and osteophyte formation. MR imaging findings have been reported in two recent cases of cord compression at the C1-2 and C3-5 levels (21, 23). In our case, epidural tophus extended beneath the posterior longitudinal ligament over two vertebral levels and also involved the intervening intervertebral disks and portions of the adjacent endplates. This is expected, as urate deposits are known to accumulate at the diskovertebral junction (12). Its multicystic appearance following administration of contrast material further suggested the diagnostic possibility of an epidural abscess resulting from spondylodiskitis. Magid et al (10) reported that even on gross inspection at surgery, gouty tophus could simulate the appearance of purulent material. Other granulomatous conditions should also be considered in the differential diagnosis, including tuberculous and fungal infections (given the pattern of subligamentous epidural extension and relative preservation of the intervertebral disk spaces) as well as rheumatoid arthritis. The latter more commonly involves the upper cervical spine and can be distinguished from gouty arthritis only by the isolation of urate crystals in the epidural tophus deposits.

Our case illustrates the MR features of intraspinal epidural tophus deposits mimicking an epidural abscess. Such demonstration in patients with peripheral gouty arthritis with no neurologic symptoms should forestall surgical intervention and prompt adequate medical treatment.

References

1. Kersley GD, Mandel L, Jeffrey MR. Gout, an unusual case with softening and subluxation of the first cervical vertebra and splenomegaly: result of ACTH administration and eventual post-mortem findings. *Ann Rheumat Dis* 1950;9:282–303
2. Koskoff YD, Morris LE, Lubic LG. Paraplegia as a complication of gout. *JAMA* 1953;152:37–38
3. Litchenstein L, Scott HW, Levin MH. Pathological changes in gout: survey of eleven necropsied cases. *Am J Pathol* 1956;32:871–895
4. Hall MC, Selin G. Spinal involvement in gout. *J Bone Joint Surg Am* 1960;42A:341–343

5. Vinstein AL, Cockerill EM. Involvement of the spine in gout. *Radiology* 1972;103:311-312
6. Litvak J, Briney W. Extradural spinal depositions of urates producing paraplegia. *J Neurosurg* 1973;39:656-658
7. Reynolds AF, Wyler AR, Norris HT. Paraparesis secondary to sodium urate deposits in the ligamentum flavum. *Arch Neurol* 1976;3:795
8. Wald SL, McLennan JE, Carroll RM, Segal H. Extradural spinal involvement by gout. *J Neurosurg* 1979;50:236-239
9. Sequeira W, Bouffard A, Salgia K, Skosey J. Quadriplegia in tophaceous gout. *Arthritis Rheum* 1981;24:1428-1430
10. Magid SK, Bray GE, Anand A. Spinal cord compression by tophi in a patient with chronic polyarthritis: case report and literature review. *Arthritis Rheum* 1981;24:1431-1434
11. Leaney BJ, Calvert JM. Tophaceous gout producing spinal cord compression. *J Neurosurg* 1983;58:580-582
12. Lagier R, Mac Gee W. Spondylodiscral erosions due to gout: anatomico-radiological study of a case. *Ann Rheum Dis* 1983;42:350-353
13. Aaron SL, Miller JDR, Percy JS. Tophaceous gout in the cervical spine. *J Rheumatol* 1984;11:862-865
14. Jacobs SR, Rubin B, DeHoratius RJ. Medically reversible quadriplegia in tophaceous gout. *Phys Med Rehabil* 1985;66:188-190
15. Varga J, Giampaolo C, Goldenberg DL. Tophaceous gout of the spine in a patient with no peripheral tophi: case report and review of the literature. *Arthritis Rheum* 1985;28:1312-1315
16. van de Laar MAFJ, van Soesbergen RM, Matricali B. Tophaceous gout of the cervical spine without peripheral tophi. *Arthritis Rheum* 1987;30:237-238
17. Alarcón GS, Reveille JD. Gouty arthritis of the axial skeleton including the sacroiliac joints. *Arch Intern Med* 1987;147:2018-2019
18. Arnold MH, Brooks PM, Savvas P, Ruff S. Tophaceous gout of the axial skeleton. *Aust NZ J Med* 1988;18:865-866
19. Vervaeck M, De Keyser J, Pauwels P, Frecourt N, D'Haens J, Ebinger G. Sudden hypotonic paraparesis caused by tophaceous gout of the lumbar spine. *Clin Neurol Neurosurg* 1991;93:233-236
20. Yasuhara K, Tomita Y, Takayama A, Fujikawa H, Otake Y, Takahashi K. Thoracic myelopathy due to compression by the epidural tophus: a case report. *J Spinal Disord* 1994;7:82-85
21. Murshid WR, Moss TH, Ettles DF, Cummins BH. Tophaceous gout of the spine causing spinal cord compression. *Br J Neurosurg* 1994;8:751-754
22. Staub-Schmidt T, Chaouat A, Rey D, Bloch JG, Christmann D. Spinal involvement in gout. *Arthritis Rheum* 1995;1:139-141
23. Duprez TP, Malghem J, Vande Berg BC, Noel HM, Munting EA, Maldague BE. Gout in the cervical spine: MR pattern mimicking diskovertebral infection. *AJNR Am J Neuroradiol* 1996;17:151-153
24. Bauer W, Klemperer F. Gout. In: Duncan GC, ed. *Diseases of Metabolism*. Philadelphia, Pa: Saunders; 1947:611-616
25. Tkach S. Gouty arthritis of the spine. *Clinical Orthop* 1970;71:81-86