



Get Clarity On Generics

Cost-Effective CT & MRI Contrast Agents



FRESENIUS
KABI

WATCH VIDEO

AJNR

A simple practical classification of cerebral infarcts on CT and its interobserver reliability.

J M Wardlaw and R Sellar

AJNR Am J Neuroradiol 1994, 15 (10) 1933-1939

<http://www.ajnr.org/content/15/10/1933>

This information is current as
of August 24, 2025.

A Simple Practical Classification of Cerebral Infarcts on CT and Its Interobserver Reliability

J. M. Wardlaw and R. Sellar

PURPOSE: To test the interobserver reliability of a simple method of classifying cerebral infarcts as seen on CT brain scans, which might allow differentiation of the site and size of the infarct from infarct swelling and hemorrhagic transformation. **METHOD:** Two experienced neuroradiologists independently reviewed 119 CT brain scans showing recent small to large cortical and subcortical cerebral infarcts and classified each for site and size, amount of swelling, and hemorrhagic transformation blind to clinical information. Six less experienced general radiologists in training classified 33 of the CT scans blind to clinical information. Interobserver agreement was calculated using unweighted κ statistics. **RESULTS:** The κ statistics between the two experienced neuroradiologists were: (a) 0.78 for site and size (95% confidence interval, 0.69–0.87); (b) 0.8 for swelling (95% confidence interval, 0.68–0.92); and (c) 0.3 for hemorrhagic transformation (95% confidence interval, 0–0.77); indicating “good,” “excellent,” and “fair” agreement, respectively. Agreement for the less experienced radiologists was fair to excellent. **CONCLUSION:** The cerebral infarct morphologic classification is simple, quick, and reliable and therefore practical. It usefully distinguishes between infarcts of similar site and size but with different amounts of swelling and hemorrhagic transformation, thus facilitating study of factors such as the influence of drug treatment on infarct swelling, which might influence clinical outcome. Although developed for CT, it could be used equally for MR imaging and has applications in research and clinical practice.

Index terms: Brain, computed tomography; Brain, edema; Brain, infarction; Cerebral hemorrhage

AJNR Am J Neuroradiol 15:1933–1939, Nov 1994

Patterns of cerebral infarction of the major arterial territories as seen on computed tomography (CT) brain scans have been described previously, but these are by necessity detailed and complex and do not include a measure of infarct swelling or hemorrhagic transformation (1–4). Although some variability occurs in the areas of the brain supplied by the major arteries, they are reasonably constant (5). Previously described methods of assessing cerebral infarcts on CT brain scans simply measured infarct vol-

ume or assessed swelling by the presence of midline shift, thereby not dissociating the site in the brain and the amount of tissue involved in the infarct (site and size) from the amount of swelling of the infarct (mass effect) or hemorrhagic transformation (6–10).

Our intention was to devise a method of classifying infarcts on CT that was not only reliable for the *presence* of an infarct (ie, its site and size) when one is blind to clinical information, but also was reliable for identifying *different amounts of infarct swelling and hemorrhagic transformation* for any given infarct size.

Method

The classification was devised after reviewing more than 100 CT brain scans showing cerebral infarction and observing that the appearance of cerebral infarcts tended to follow recurring patterns, despite the recognized variability in territories supplied by the major arteries (5). Figure 1 shows templates devised to illustrate these typical patterns of infarction: (a) site and size, (b) swelling, and (c) hemorrhagic transformation of the infarct. There were

Received December 30, 1993; accepted after revision April 5, 1994.

From the Departments of Clinical Neurosciences (J.M.W.) and Neuro-radiology (R.S.), Western General Hospital, Edinburgh, United Kingdom.

J.M.W. was a Medical Research Council Research Training Fellow in Neuroradiology.

Address reprint requests to Dr J.M. Wardlaw, Consultant Neuroradiologist, Department of Clinical Neuroradiology, Institute of Neurologic Sciences, Southern General Hospital, Govan Road, Glasgow G51 4TF, United Kingdom.

AJNR 15:1933–1939, Nov 1994 0195-6108/94/1510–1933

© American Society of Neuroradiology

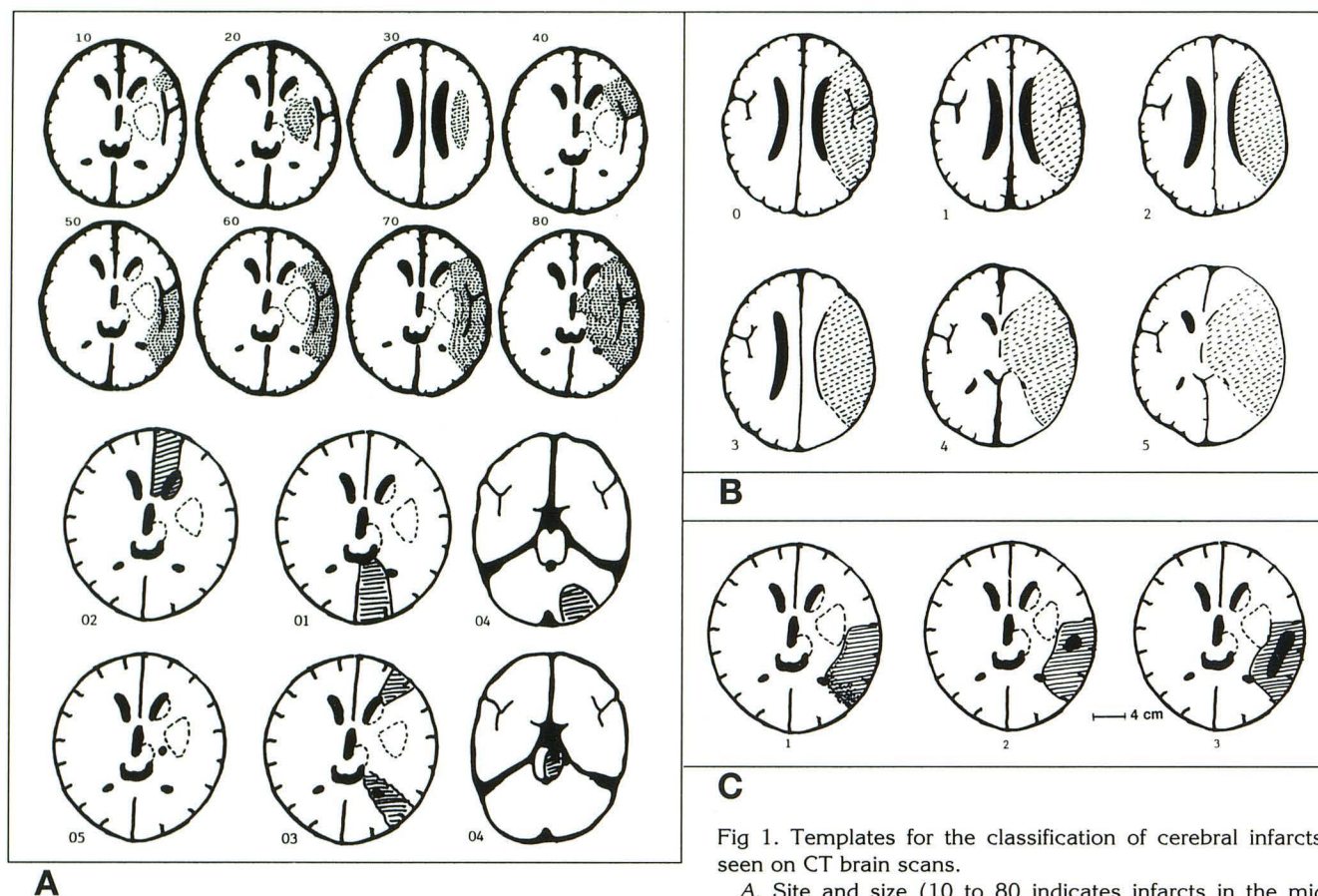


Fig 1. Templates for the classification of cerebral infarcts as seen on CT brain scans.

A, Site and size (10 to 80 indicates infarcts in the middle cerebral artery territory; 01 to 05, infarcts elsewhere in the brain and lacunar and border zone infarcts).

B, Swelling (0 indicates no swelling; 1, effacement of cortical sulci; 2, 1 + minor effacement of the ipsilateral lateral ventricle; 3, 1 + complete effacement of the ipsilateral lateral ventricle; 4, 3+ effacement of the third ventricle; 5, shift of the midline away from the side of the infarction; and 6 [not shown], 5+ effacement of basal cisterns).

C, Hemorrhagic transformation (0 indicates no hemorrhage; 1, petechial hemorrhage; 2, small hematoma less than 2 cm in diameter; and 3, hematoma greater than 2 cm in diameter).

more categories for infarcts in the middle cerebral artery territory because the middle cerebral artery supplies the largest part of the brain and is the territory most frequently involved in infarction (11).

Over a 9-month period, 180 consecutive patients with symptoms of acute stroke were admitted to our hospital and had a CT brain scan unless the attending physician did not feel that the CT was justified clinically (30 patients) or the patient died or was discharged soon after admission (5). All patients were examined by a physician with an interest in stroke to confirm that they had had a stroke clinically. Patients with a previous stroke were included. Patients whose CT brain scan showed primary intracerebral hemorrhage (30), subarachnoid hemorrhage (5), tumor (4), or abscess (2) (ie, not an infarct as the cause of recent symptoms) were excluded. Fifteen patients had 2 CT scans within the first 3 weeks of admission as part of a separate study, giving a total of 119 CT scans.

A recent infarct was defined as an area of hypodensity relative to adjacent normal brain (possibly associated with mass effect or areas of hemorrhage) whose shape indi-

cated vascular origin (whether cortical or subcortical). Density was assessed subjectively to simulate a clinical situation (Hounsfield units were not measured). Recent infarcts were distinguished from old infarcts by the latter's more marked hypodensity, lack of mass effect, and atrophy of adjacent brain (12). The 119 study CT scans were mixed with 5 scans from elderly patients who had not had a stroke and were considered healthy for their age. Two experienced neuroradiologists (J.M.W. and R.S.) independently reviewed the CT brain scans blind to all clinical information. They knew that most of the patients had had a stroke but not which ones and classified each for the presence, site, and size of infarct, amount of swelling, and hemorrhagic transformation according to the templates shown in Figure 1. Each observer was asked simply to identify any recent infarct and classify it according to the templates. Some patients had more than one CT brain scan, and these were randomly mixed so that no bias in interpretation of any one individual CT brain scan would be introduced by knowledge of the infarct's appearance in the same patient at a different time after stroke onset.

TABLE 1: Interobserver agreement between the two experienced neuroradiologists

Parameter of Infarct Examined	κ	(95% Confidence Interval)
Infarct site and extent, all scans	0.78	(0.69 to 0.87)
Infarct site and extent, medium and large cortical and subcortical infarcts	0.87	(0.77 to 0.97)
Infarct site and extent, small cortical and subcortical infarcts	0.59	(0.42 to 0.76)
Infarct swelling	0.8	(0.68 to 0.92)
Infarct hemorrhagic transformation	0.3	(0.0 to 0.77)

Six less experienced general radiologists in training (first to fifth year of a general radiology training program) were asked to apply the classification to a selection of the study CT scans showing a variety of recent small and large cerebral infarcts with variable amounts of swelling and hemorrhagic transformation mingled with some normal scans. They also were blind to the clinical information. The general radiologists were not familiar with the classification and were not given an opportunity to practice with it before reviewing the CT scans. Therefore, their results are for first-ever use.

The interobserver agreement between the two experienced neuroradiologists and between one of the two experienced neuroradiologists (J.M.W.) and the general radiologists was calculated using unweighted κ statistics (13). The κ statistic is a measure of agreement between two observers beyond that expected from chance alone. A κ

value of 0 indicates agreement no better than chance, and a value of 1 indicates perfect agreement. Values of 0 to 0.2 generally are thought to indicate poor agreement; 0.21 to 0.40, fair agreement; 0.41 to 0.6, moderate agreement; 0.61 to 0.8, good agreement; and 0.81 to 1, excellent agreement (13).

Results

There were 119 CT brain scans included in the study. The mean age of the patients was 72 years (range, 19 to 93 years). The CT scans were obtained between 2 hours and 3 months after the stroke, although the majority were obtained within the first 2 weeks.

Interobserver agreement (κ) between the two experienced neuroradiologists was "good" for infarct site and size; "excellent" for infarct swelling; and "fair" for hemorrhagic transformation of the infarct (Table 1). The poorer interobserver agreement for hemorrhagic transformation was caused by disagreement about minor amounts of petechial hemorrhage, not about the presence of focal hematomas (Fig 2). There was no disagreement about the presence of focal hematomas more than 1 cm in diameter within the infarct. The κ value for infarct site and size for the subgroup of patients with medium to large cortical and subcortical infarcts (72 CT scans) was 0.87 (95% confidence interval 0.77 to 0.97) and was 0.59 (95% confidence interval

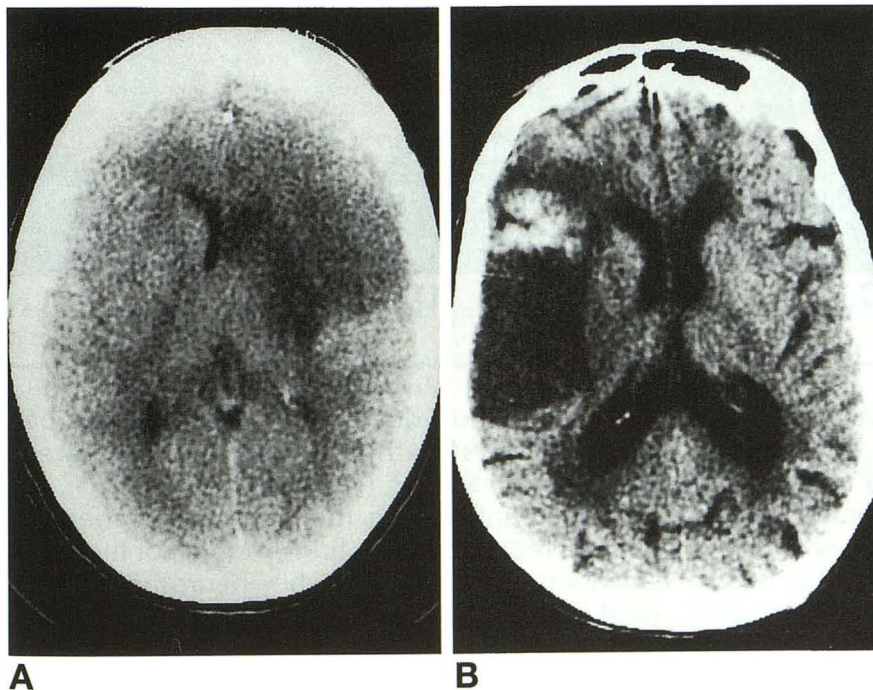


Fig 2. Examples of hemorrhagic transformation.

A, Increased density at the margin of a 40 cortical infarct (anterior half of the peripheral part of the middle cerebral artery territory not including the basal ganglia, amount of swelling is 3)—? petechial hemorrhage (code 1) or luxury perfusion.

B, Hematoma greater than 2 cm in diameter (code 3) in a 60 cortical infarct (whole of the peripheral part of the middle cerebral artery territory but not including the basal ganglia; swelling is 1).

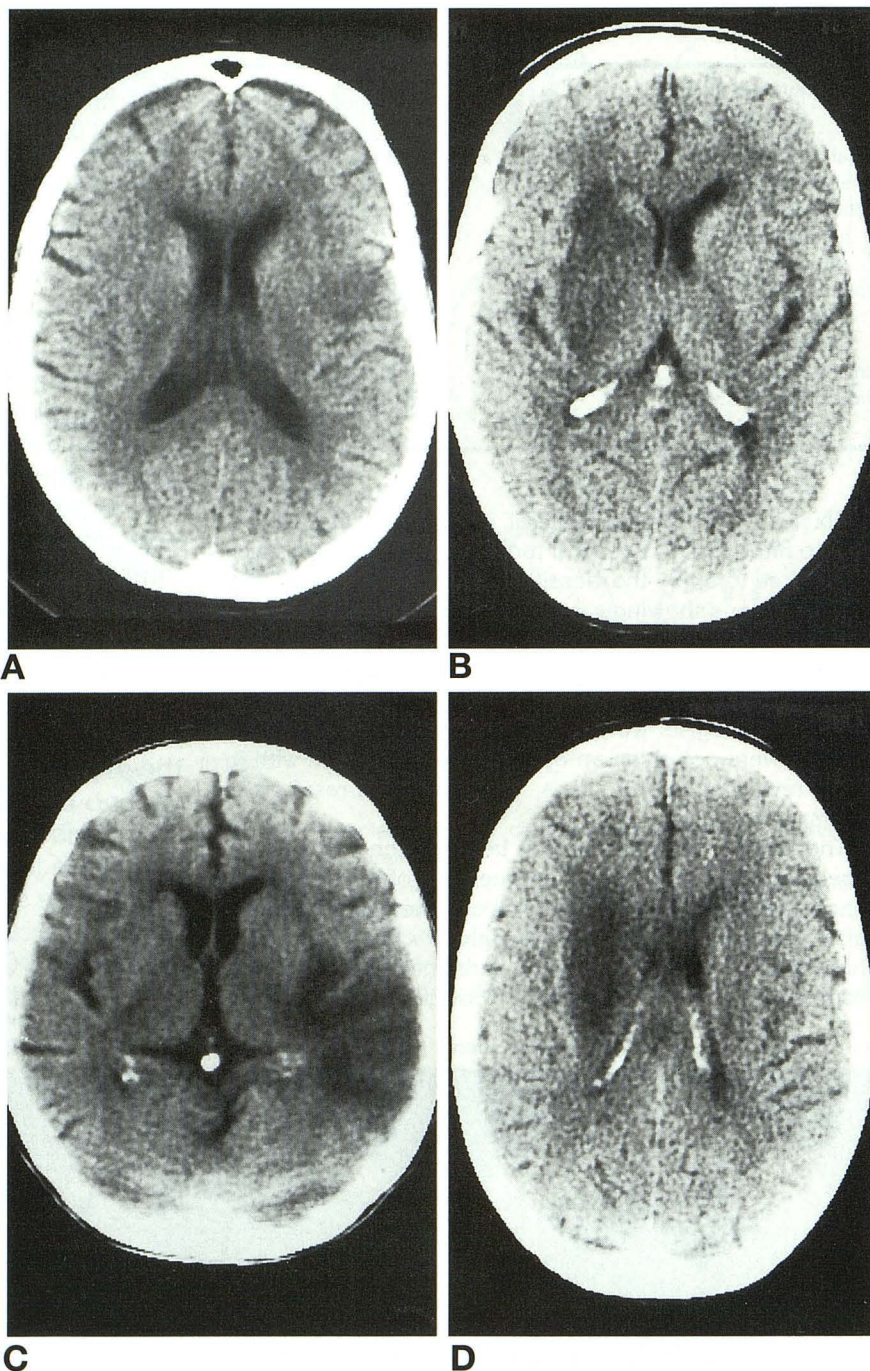
Fig 3. Other examples of infarcts in the middle cerebral artery territory.

A, A 10 small cortical infarct (swelling is 1).

B, A 20 large subcortical (striatocapsular) infarct (swelling, 2).

C, A 50 cortical infarct in the posterior half of the middle cerebral artery territory not involving the basal ganglia (swelling, 1).

D, A 30 large subcortical infarct in the white matter lateral to the lateral ventricle (swelling, 2). None of these examples shows any hemorrhage.



0.42 to 0.76) for the subgroup of patients with small to medium cortical or small subcortical infarcts (47 CT scans). Examples of middle cerebral artery infarcts are shown in Figure 3. The interobserver agreement for patients with medium to large cortical infarcts (codes 40 to 80 in Fig 1) and large subcortical infarcts (codes 20 to 30 in Fig 1) was excellent for both site and size and for swelling of the infarct, indicating

that the method does allow differentiation between infarcts of the same size but different amounts of swelling (see Fig 4).

Agreement among the six less experienced general radiologists on first-ever use of the classification and one of the neuroradiologists (J.M.W.) was moderate to good for infarct site and size, fair to moderate for infarct swelling, and poor to fair for hemorrhagic transformation

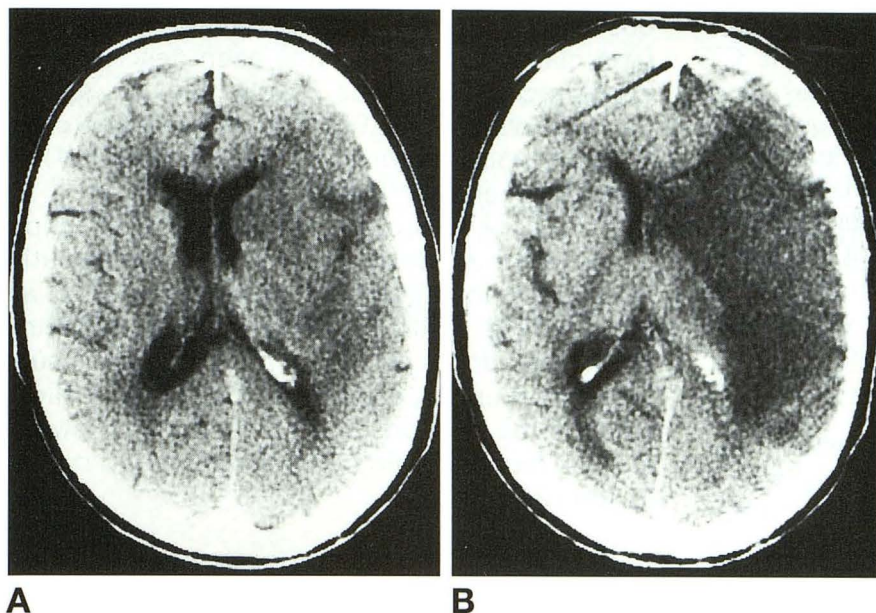


Fig 4. Example of sequential CT scans from the same patient.

A, Twelve hours after symptom onset and B, 4 days after symptom onset. Note that infarct site and size is the same (80 is whole middle cerebral artery territory), but there is a different amount of infarct swelling, 1 in A and 5 in B. Hemorrhagic transformation was 0 in both A and B.

(Table 2). The poorer agreement for infarct swelling was caused by minor disagreement about the amount of swelling (eg, coding a 2 instead of a 3), not major (eg, coding a 2 instead of a 5). When classified simply as major amounts of infarct swelling (ie, code 3 to 6) or minor (ie, code 0 to 2) the κ values improved to good to excellent (Table 2). The poor agreement for hemorrhagic transformation again was caused by disagreement about minor amounts of petechial hemorrhage. There was no disagreement about the presence of focal hematomas more than 1 cm in diameter.

Discussion

This simple classification of cerebral infarct morphology as seen on CT brain scans has good interobserver reliability, even on first-ever

use by relatively inexperienced radiologists in training. The agreement for infarct site, size, and swelling between experienced neuroradiologists was excellent. Agreement for hemorrhagic transformation was not as good, but this was attributable to disagreement about the presence of minor amounts of petechial hemorrhage, not about focal hematomas (Fig 2). The cortical margins of an infarct may appear denser than surrounding normal brain partly because of a visual effect from the low density of infarct making the adjacent normal cortex appear brighter, or there may be a genuine increase in tissue density around the margin of an infarct ascribed to "luxury perfusion" (12), or there may be true petechial hemorrhage (14). The disagreement over the presence of petechial hemorrhage, which was consistent throughout our group of observers, may explain

TABLE 2: Interobserver agreement between one of the two experienced neuroradiologists (J.M.W.) and the six general radiologists in training

Amount of CT Experience of the General Radiologists	κ for			
	Infarct Site and Extent	Infarct Swelling (Exact)	Infarct Swelling (Major or Minor)	Infarct Hemorrhagic Transformation
5 years	0.52	0.56	0.85	0.56
4 years	0.56	0.46	0.93	0.4
4 years	0.74	0.41	0.55	0.13
3 years	0.67	0.56	0.93	0.7
2 years	0.53	0.31	0.65	0.21
1 year	0.54	0.54	0.65	0.55

some of the large differences in hemorrhagic transformation rates reported in different CT (and recently MR) studies. Some studies have reported rates of petechial hemorrhage up to 45% (15, 16), whereas others found it in only 5% of patients (10). Other possible reasons for the wide variation in reported rates of hemorrhagic transformation include bias in patient selection, use of antithrombotic drugs, differences between CT scanners, and scanning at different times after the stroke, but poor interobserver agreement may have contributed. Measurement of the tissue density on the CT console would reduce error caused by visual effects but would not be practical to obtain routinely, which is why the density of the infarcts was not measured in this study. Pathologic studies show some degree of petechial hemorrhage in most infarcts (10). Similar findings are demonstrated by modern imaging techniques (16).

Interobserver reliability for site and size of the infarct for the two experienced neuroradiologists was lower for the subgroup of patients with small cortical and lacunar infarcts than for medium to large infarcts. The mean age of patients in the study was 72 years when generalized cerebral atrophy, periventricular white matter lucencies, and enlarged perivascular spaces (in the internal capsule and basal ganglia) are common (17). Although a previous study found no evidence of bias in reporting lacunar infarcts on CT brain scans from accompanying patient information (18), without any clinical information it can be difficult to discriminate small cortical infarcts from enlarged cortical sulci and if there are numerous "holes in the brain" to decide which is most likely the cause of recent symptoms.

The agreement for infarct swelling was excellent for the experienced neuroradiologists, meaning that for a given infarct site and size, the change with time in the amount of swelling in the acute phase of the infarct can be assessed reliably (Fig 4A and B). The classification of infarct swelling was intended primarily for use in describing medium to large infarcts in the middle cerebral artery territory but could be applied to small infarcts also. It was not intended to describe mass effect from large hematomas.

The interobserver agreement for the general radiologists in training, who had never seen or used the method before, was lower but was still in the moderate to excellent categories when minor disagreements were ignored. The inter-

observer agreement was better for the CT infarct classification than has been described for experienced clinicians using clinical stroke classifications (19, 20). The classification conceivably could be used to classify cerebral infarcts as seen on MR imaging.

Use of the infarct morphology classification would allow study of the effect of therapeutic maneuvers for acute ischemic stroke such as thrombolysis, neuroprotective agents, and anti-thrombotic drugs on infarct morphology as surrogate, but useful, endpoints. It also would allow study of the relationships between infarct swelling and hemorrhagic transformation and reperfusion (21).

Acknowledgments

We thank Mr Jim Slattery for advice on the use of the Kappa statistics and Miss L. Weir and Mrs G. Clark for typing the manuscript. Dr M.S. Dennis and Dr R. Lindley of the Neurosciences Trials Unit in the Western General Hospital, Edinburgh, examined all the patients.

References

1. Damasio H. A computed tomographic guide to the identification of cerebrovascular territories. *Arch Neurol* 1983;40:138-142
2. Berman SA, Hayman LA, Hinck VC. Correlation of CT cerebrovascular territories with function, 1: anterior cerebral artery. *AJNR Am J Neuroradiol* 1980;1:259-263
3. Zeumer H, Ringelstein EB. Computed tomography patterns of brain infarctions as a pathogenetic key. In: Poeck K, Ringelstein EB, Hache W, eds. *New Trends in the Diagnosis and the Management of Stroke*. Berlin, NY: Springer-Verlag, 1987:75-85
4. Graeber MC, Jordon JE, Mishra SK, Nadeau SE. Watershed infarction on computed tomographic scan: an unreliable sign of haemodynamic stroke. *Arch Neurol* 1992;49:311-313
5. van der Zwan A, Hillen B. Review of the variability of the territories of the major cerebral arteries. *Stroke* 1991;22:1078-1084
6. Brott T, Marler JR, Olinger CP, et al. Measurements of acute cerebral infarction: lesion size by computed tomography. *Stroke* 1989;20:871-875
7. Okada Y, Sadoshima S, Nakane H, et al. Early computed tomographic findings for thrombolytic therapy in patients with acute brain embolism. *Stroke* 1992;23:20-23
8. Terent A, Ronquist G, Bergstrom K, et al. Ischaemic oedema in stroke: a parallel study with computed tomography and cerebrospinal fluid markers of disturbed brain cell metabolism. *Stroke* 1981;12:33-40
9. Skriver EB, Olsen TS, McNair P. Mass effect and atrophy after stroke. *Acta Radiol* 1990;31:431-438
10. Lodder J. CT-detected haemorrhagic infarction: relation with the size of the infarct, and the presence of midline shift. *Acta Neurol Scand* 1984;70:329-335
11. Bamford J, Sandercock PAG, Dennis MS, et al. Classification and natural history of clinically identifiable subtypes of cerebral infarction. *Lancet* 1991;337:1521-1526

12. Inoue Y, Takemoto K, Miyamoto T, et al. Sequential computed tomography scans in acute cerebral infarction. *Radiology* 1980; 135:655-662
13. Brennan P, Silman A. Statistical methods for assessing observer variability in clinical measures. *Br Med J* 1992;304:1491-1494
14. Pessin MS, Teal PA, Caplan LR. Haemorrhagic infarction: guilt by association? *AJNR Am J Neuroradiol* 1991;12:1123-1236
15. Hornig CR, Dorndorf W, Agnoli AL. Haemorrhagic cerebral infarction: prospective study. *Stroke* 1986;17:179-185
16. Hornig CR, Bauer T, Simon C, et al. Haemorrhagic transformation in cardio-embolic cerebral infarction. *Stroke* 1993;24:465-468
17. Meyer JS, Kawamura J, Terayama Y. White matter lesions in the elderly. *J Neurol Sci* 1992;110:1-7
18. Bonke B, Koudstaal PJ, Dijkstra G, et al. Detection of lacunar infarction in brain CT scans: no evidence of bias from accompanying patient information. *Neuroradiology* 1989;31:170-173
19. Shinar D, Gross CR, Mohr JP, et al. Inter-observer variability in the assessment of neurologic history and examination in the Stroke Data Bank. *Arch Neurol* 1985;42:557-565
20. Lindley RI, Dennis MS, Wardlaw J, et al. Interobserver variation in the classification of subtypes of cerebral infarction. *J Neurol Neurosurg and Psychiat* 1993;56:730
21. Wardlaw JM, Dennis MS, Lindley RI, et al. Does early reperfusion of a cerebral infarct influence cerebral infarct swelling in the acute stage or the final clinical outcome? *Cerebrovasc Dis* 1993;3: 86-93.