

Get Clarity On Generics

Cost-Effective CT & MRI Contrast Agents

 **FRESENIUS
KABI**

[WATCH VIDEO](#)

AJNR

Artery Length Sensitivity in Patient-Specific Cerebral Aneurysm Simulations

S. Hodis, S. Kargar, D.F. Kallmes and D. Dragomir-Daescu

AJNR Am J Neuroradiol 2015, 36 (4) 737-743

doi: <https://doi.org/10.3174/ajnr.A4179>

<http://www.ajnr.org/content/36/4/737>

This information is current as of August 19, 2025.

Artery Length Sensitivity in Patient-Specific Cerebral Aneurysm Simulations

S. Hodis, S. Kargar, D.F. Kallmes, and D. Dragomir-Daescu

ABSTRACT

BACKGROUND AND PURPOSE: The reconstruction of aneurysm geometry is a main factor affecting the accuracy of hemodynamics simulations in patient-specific aneurysms. We analyzed the effects of the inlet artery length on intra-aneurysmal flow estimations by using 10 ophthalmic aneurysm models.

MATERIALS AND METHODS: We successively truncated the inlet artery of each model, first at the cavernous segment and second at the clinoid segment. For each aneurysm, we obtained 3 models with different artery lengths: the originally segmented geometry with the longest available inlet from scans and 2 others with successively shorter artery lengths. We analyzed the velocity, wall shear stress, and the oscillatory shear index inside the aneurysm and compared the 2 truncations with the original model.

RESULTS: We found that eliminating 1 arterial turn resulted in root mean square errors of <18% with no visual differences for the contours of the flow parameters in 8 of the 10 models. In contrast, truncating at the second turn led to root mean square errors between 18% and 32%, with consistently large errors for wall shear stress and the oscillatory shear index in 5 of the 10 models and visual differences for the contours of the flow parameters. For 3 other models, the largest errors were between 43% and 55%, with large visual differences in the contour plots.

CONCLUSIONS: Excluding 2 arterial turns from the inlet artery length of the ophthalmic aneurysm resulted in large quantitative differences in the calculated velocity, wall shear stress, and oscillatory shear index distributions, which could lead to erroneous conclusions if used clinically.

ABBREVIATIONS: BV = bleb volume; BW = aneurysmal bleb walls; CFD = computational fluid dynamics; OSI = oscillatory shear index; PN = a cross-section plane at the aneurysm neck; PO = a cross-section plane parallel with the PN and offset toward the middle of the aneurysm; PP = a plane perpendicular to the PN and passing near the middle of the aneurysm; PU = a cross-section plane located approximately 2 inlet diameters upstream from the aneurysm; RMS = root mean square; WSS = wall shear stress

Computational fluid dynamics (CFD) simulations of patient-specific cerebral aneurysms provides a valuable tool for understanding the hemodynamic environment. The geometry of the aneurysm needs to be accurately represented, and the computational model needs to account for the main properties of blood flow physics to obtain realistic and accurate flow solutions. When one reconstructs the computational geometry from imaging data, such as CT angiography or MR angiography, the extent of the surrounding vasculature that must be included to obtain rigorous flow solutions is not a priori

known. Inclusion of small-diameter surrounding vessels usually does not affect the flow solution results but could add significant computational effort.¹ On the other hand, exclusion or severe truncation of larger vessels might change the flow estimations, usually resulting in nonrealistic flow patterns. The operator-dependent segmentation of radiologic images of aneurysms leads to model geometries that showed errors as large as 60% in the estimated hemodynamic parameters.²⁻⁵ However, there is no published sensitivity study designed to analyze the effect of the arterial inlet length on the intra-aneurysmal flow estimates, to our knowledge. Due to the lack of accurate, clinically measured velocity profiles and cross-sectional geometries, many current studies use generic, mathematically generated blood flow boundary conditions and short arterial lengths.

As a rule of thumb, an inlet length of at least 10 artery diameters upstream of the aneurysm must be used in hemodynamic CFD simulations. In addition, the inlet boundary conditions used

Received June 30, 2014; accepted after revision September 29.

From the Department of Mathematics (S.H.), Texas A&M University, Kingsville, Texas; and College of Medicine (S.K., D.F.K., D.D.-D.), Department of Radiology (S.H., D.F.K.), and Division of Engineering (D.D.-D.), Mayo Clinic, Rochester, Minnesota.

Please address correspondence to Dan Dragomir-Daescu, PhD, Division of Engineering, Mayo Clinic, 200 First St SW, Rochester, MN 55905; e-mail: DragomirDaescu.Dan@mayo.edu

<http://dx.doi.org/10.3174/ajnr.A4179>

in the literature, usually velocity profiles, are taken as fully developed and axisymmetric.^{1,4,6-8} These assumptions are valid only for flow in straight tubes, which is very different from flow in patient arteries, where the flow is not fully developed even in the common carotid artery, the location where measurements are more readily available. Therefore, using the fully developed axisymmetric velocity profile on a short artery inlet may result in unrealistic flow estimates in the aneurysm. In the absence of physiologic measurements of arterial cross-sectional velocity distributions, it is generally safer to include a longer anatomic inlet artery to let the flow solution develop realistically on the basis of the tortuosity of the arterial geometry.⁹ Thus, we hypothesized that including a longer inlet artery will minimize the effect of the inlet boundary conditions.

The aim of this study was to assess the effect of truncating the arterial inlet length proximal to the aneurysm on the local intra-aneurysmal hemodynamics of ophthalmic aneurysms. The goal was to find a sufficient artery length such that the values of velocity, wall shear stress (WSS), and oscillatory shear index (OSI) in the aneurysm are less affected by the arterial length when using the same boundary conditions and fluid properties.

MATERIALS AND METHODS

Geometries

Ten cerebral aneurysms located on the ophthalmic segment with a feeding artery starting around the lacerum segment were included in the study. The computational geometries were segmented from the 3D rotational angiography data by using Mimics (Materialise, Leuven, Belgium). For each aneurysm model, we generated 3 model truncations (T): T_0 had the longest possible inlet artery obtained from the scan imaging data, T_1 was truncated orthogonal to the artery axis after the first major arterial turn at the cavernous segment, and T_2 was truncated after the second major arterial turn, at the clinoid segment. For each patient model, the arterial outlets lengths were kept constant at >5 times the artery diameter^{7,10,11} for each of the 3 arterial inlet truncations. When the outlet was near a bifurcation, we truncated even further to allow a more remote outlet boundary condition.

CFD Simulation

For each truncation, we generated uniform hex-core grids by using ICEM CFD (ANSYS, Canonsburg, Pennsylvania) with an average node-spacing of 0.12 mm and we used 5 layers in the boundary layer with a first layer thickness of 0.01 mm and an inflation factor of 1.25. These values were previously shown to lead to grid-independent velocity and pressure estimations.⁷ Pulsatile flow solutions were generated with Fluent 14.0 (ANSYS) by using a second-order implicit solver. The Quadratic Upstream Interpolation for Convective Kinematics scheme was used for the convective term, with the Least Squares Cell-Based method for gradient estimation of the diffusion term at the cell faces. To handle pressure-velocity coupling, we adopted the Semi-Implicit Method for Pressure-Linked Equations algorithm. Iterative convergence was achieved when the normalized root mean square residuals for continuity and momentum equations became less than 10^{-5} . For the inlet boundary conditions, we specified a fully developed Womersley velocity profile¹¹ at the

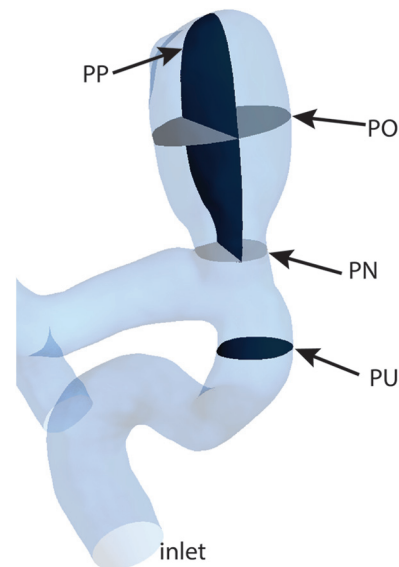


FIG 1. Aneurysm geometry showing the 4 planes chosen for velocity distributions analysis: upstream plane, neck plane, offset plane, and perpendicular plane.

morphed circular inlet surface with the transient waveform given by Zamir¹² and used in Naughton et al⁸ and Hodis et al,^{7,10,13-15} with an average flow rate of 4 mL/s^{1,5} and a maximum value of approximately 8 mL/s at peak systole. A viscosity of 0.035 poise and a density of 1050 kg/m³ were used for physical properties. At the outlets, we applied the outflow boundary conditions derived from the stress continuity at outlet surfaces by specifying zero pressure.¹⁶ At the lumen boundaries, we imposed a no-slip boundary condition, with zero velocity. The period of the cardiac cycle was assumed to be 1 second. To eliminate transient numeric errors, we solved the equations for 4 cardiac cycles by using 10,000 time-steps per cardiac cycle. We observed that third and fourth cardiac cycles produced almost identical results, thus confirming that the results were mathematically converged.

Hemodynamic Parameters

In this study, we compared the 3 main parameters used by researchers to describe the intra-aneurysmal flow: velocity, WSS, and OSI.^{1,5,17-19} Velocity and pressure are the 2 primary hemodynamic parameters that are determined from the incompressible Navier-Stokes equations in vector form¹²:

$$1) \quad \begin{cases} \nabla \cdot \vec{v} = 0 \\ \rho \left(\frac{\partial \vec{v}}{\partial t} + \vec{v} \cdot \nabla \vec{v} \right) = -\nabla p + \mu \Delta \vec{v}, \end{cases}$$

where \vec{v} is the velocity vector, p is the pressure scalar, and the symbols \cdot , ∇ , and Δ are dot product, gradient, and Laplacian vector operators, respectively.

In a Newtonian fluid, the WSS vector is the force that acts tangential to the wall surface and is defined as the gradient at the wall of the tangential velocity^{12,16,19,20}:

$$2) \quad \vec{WSS} = \mu \frac{\partial (\vec{v} - (\vec{v} \cdot \vec{n})\vec{n})}{\partial \vec{n}},$$

where \vec{n} is the wall outward normal.

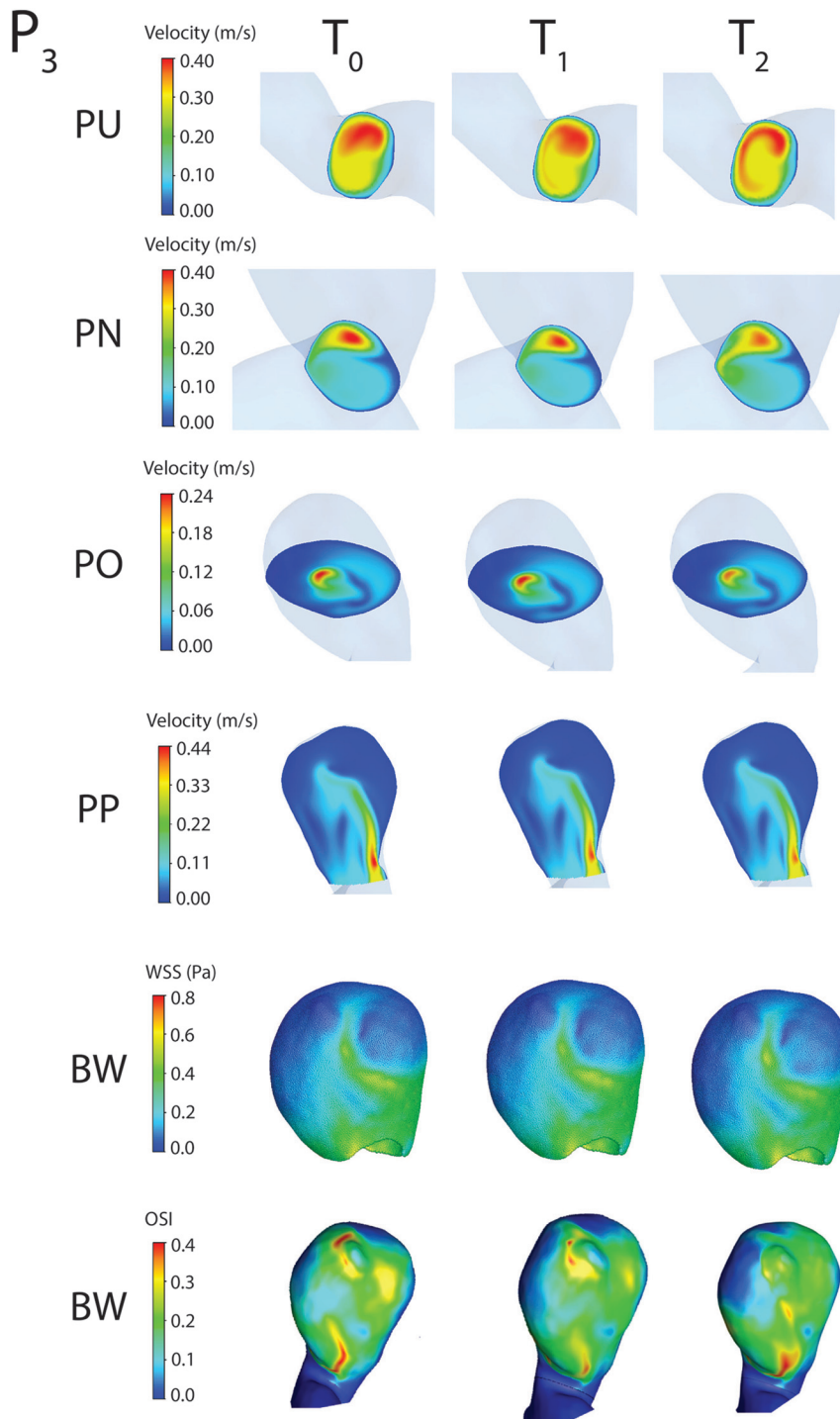


FIG 2. Velocity magnitude contour plots on the 4 planes: PU, PN, PO, and PP and WSS and OSI magnitude contours on BW for model P_3 .

The OSI parameter was defined as in Ku et al.²⁰ A maximum value of 0.5, shows that \vec{WSS} is fully changing the direction during the cardiac cycle, which usually describes a complex pulsatile flow.²¹ We analyzed the velocity and WSS parameters at peak systole in the fourth cardiac cycle and the OSI during the entire fourth cycle. We chose the peak systole for the error analysis because of the larger errors compared with other time points in the cardiac cycle.¹² To compare the results for the 3 truncations, we considered 6 locations. First, we evaluated the

velocity distributions in the entire aneurysm bleb volume (BV, location 1). Second, we calculated the velocity distributions on 4 cross-section planes: a cross-section plane located approximately 2 inlet diameters upstream from the aneurysm (PU), a cross-section plane at the aneurysm neck (PN), a cross-section plane parallel with PN and offset toward the middle of the aneurysm (PO), and a plane perpendicular to PN and passing near the middle of the aneurysm (PP, locations 2–5) (Fig 1). Third, WSS and OSI were both evaluated at all points on the aneurysmal bleb walls (BW, location 6). WSS and OSI are, along with vorticity, gradient oscillatory number, or relative residence time, some of the most frequently analyzed quantities in recent CFD literature of cerebral aneurysm blood flow.²²

Quantitative Analysis

To better quantify the differences among the 3 truncations, we used a normalized error that measures the difference between 2 parameters with respect to the mean value of the 2 parameters, defined as follows:

$$3) \quad \epsilon_n^{(i)} = 100 \times \frac{2|v_0^{(i)} - v_n^{(i)}|}{v_0^{(i)} + v_n^{(i)}},$$

for $n = 1, 2$ and $i = 1, \dots, N$,

where $v_0^{(i)}$ is the hemodynamic variable v at the grid point i , for the truncation T_0 , N is the total number of grid points on a sample plane or surface, and $v_n^{(i)}$ is the hemodynamic variable V , at the grid point i for the truncation T_n , $n = 1, 2$.

Therefore, $\epsilon_n^{(i)}$ is an unbiased error measure relative to the mean value of T_0 and T_n ($n = 1, 2$) truncations.²³ In the results to follow, we calculated the root mean square (RMS) of the errors, over all points in the sample plane, surface, or volume, as follows:

$$4) \quad \text{RMS} = \sqrt{\frac{1}{N} \sum_{i=1}^N (\epsilon_n^{(i)})^2}, \quad n = 1, 2.$$

To avoid calculating errors for parameters on a specific location with magnitudes that can approach zero, we expressly eliminated from the analysis all the grid points on which the magnitudes were $<10\%$ of the maximum value. Therefore, the errors for velocity, WSS, and OSI were not recorded when their absolute values were too small.

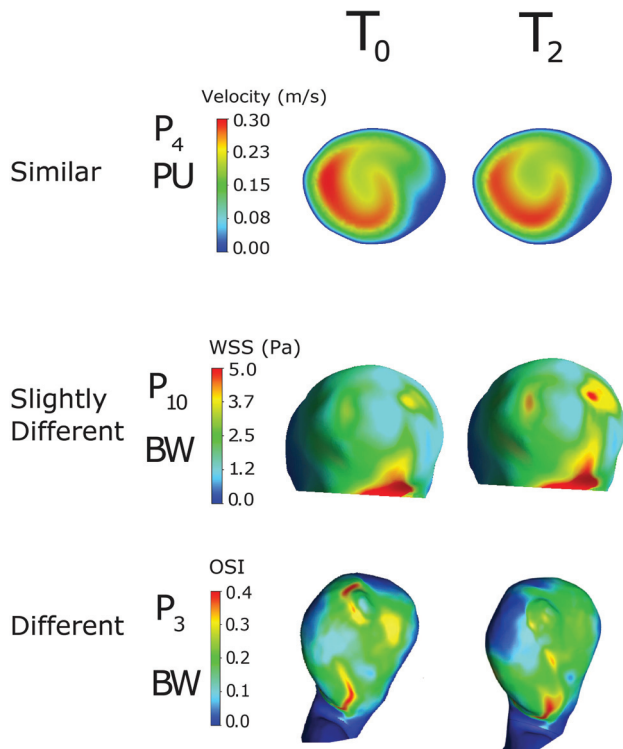


FIG 3. T_0 versus T_2 comparison illustrating similar contours (velocity on PU in P_4), slightly different contours (WSS on BW in P_{10}), and different contours (OSI on BW in P_3).

Qualitative Analysis

Most of the CFD analysis results presented in the literature use direct observations of isosurfaces or contour plots for a specific hemodynamic parameter. To compare observations of generated isosurfaces, we also plotted velocity contours on the 4 cross-section planes, the WSS contours on the aneurysm wall, all at peak systole, and the distributions of OSI on BW for the fourth cardiac cycle (Fig 2). Next we assessed the graphic results by visually comparing the contours between T_0 and T_1 and between T_0 and T_2 by using a trichotomous scale: similar, slightly different (Fig 3), and different and associated the qualitative results with the errors defined in Equations 3 and 4.

RESULTS

Model Truncations

The 10 segmented ophthalmic aneurysm models showing the 3 locations of inlet artery truncations are presented in Fig 4. The original model truncation, T_0 , included the entire arterial length segmented from the acquired images and, depending on patient blood vessel geometry, resulted in arterial lengths ranging from 58 to 86 mm. The first user truncation, T_1 , was made at the cavernous segment after the major ICA turn and resulted in arterial lengths of 33–58 mm, whereas the second user truncation, T_2 , was made at the clinoid segment after the next arterial turn, with inlet arterial lengths ranging from 21 to 37 mm. The arterial inlet lengths were approximately between 14 and 18 mean arterial diameters for T_0 , between 8 and 12 diameters for T_1 , and between 5 and 8 diameters for T_2 .

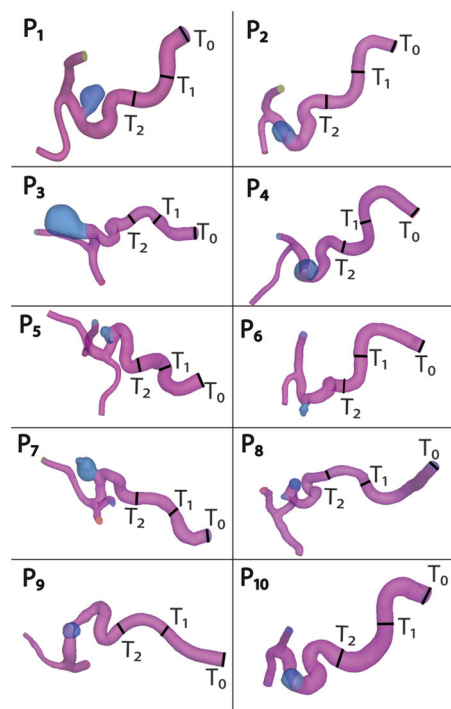


FIG 4. Ten ophthalmic aneurysm geometries showing the locations of the truncation planes: T_0 is the original model obtained from the patient clinical images (full FOV), T_1 is the first truncation at the cavernous segment, and T_2 is the second truncation, at the clinoid segment.

Quantitative Analysis

For the quantitative analysis, we used the errors defined in Equations 3 and 4 for the velocity vector, the WSS, and the OSI magnitudes. The results for the error RMS (Equation 4) are shown in the Table for the 6 locations: planes PU, PN, PO, and PP; the BW; and the BV. In general, the errors for the T_2 truncations were higher than the errors for the T_1 truncations, and the larger errors were observed in the PU plane and the BW location.

For 8 models ($P_2, P_4, P_5, P_6, P_7, P_8, P_9$, and P_{10}), the error RMS values for the T_1 to T_0 comparison were $<18\%$ (which was the threshold value for which most of the graphic plots started to look dissimilar). For the other 2 models (P_1 and P_3), the errors were as large as 32%.

In contrast, the error RMS values between the T_2 and T_0 truncations were $<18\%$ for all quantities in only 2 models (P_4 and P_8). For 5 models (P_2, P_6, P_7, P_9 , and P_{10}), the errors were between 18% and 32%. In the remaining 3 models (P_1, P_3 , and P_5), some of the errors were even larger, reaching 43%–55% for OSI on the BW as shown in the Table.

Overall, the T_2 truncation errors are significantly larger than T_1 truncation errors for all 10 models, as shown by a Bland-Altman plot in Fig 5.

Meaningful Error

To associate the quantitative description with the qualitative observations and define a meaningful error, we compared the contours plots with the error RMS (Equation 4) of the scatterplots representing the magnitudes of T_0 versus T_1 and T_0 versus T_2 . As an example, Fig 6 shows the results of the WSS on BW for model

Percent error RMS values calculated with Equation 4 for the 10 models^a

Models	PU		PN		PO		PP		BV		BW		BW	
	Velocity		Velocity		Velocity		Velocity		Velocity		WSS		OSI	
	ϵ_1	ϵ_2	ϵ_1	ϵ_2	ϵ_1	ϵ_2	ϵ_1	ϵ_2	ϵ_1	ϵ_2	ϵ_1	ϵ_2	ϵ_1	ϵ_2
P_1	10	19	4	13	9	22	5	26	13	26	17	31	23	43
P_2	3	20	3	3	3	4	3	3	4	4	6	7	7	15
P_3	10	18	12	33	7	20	7	17	6	16	5	11	32	55
P_4	1	10	1	2	1	2	1	1	2	2	7	8	4	7
P_5	14	23	4	22	3	14	4	23	4	18	5	23	18	54
P_6	4	6	2	2	2	2	2	2	2	3	2	3	18	26
P_7	5	20	4	25	1	15	2	10	3	31	8	20	4	28
P_8	2	2	<1	1	<1	1	<1	1	<1	1	<1	2	2	2
P_9	3	52	<1	10	<1	9	<1	8	<1	11	<1	18	2	21
P_{10}	3	25	6	16	3	21	2	12	3	17	9	25	18	26

^a ϵ_1 is the error between T_0 and T_1 truncations, while ϵ_2 is the error between T_0 and T_2 truncations, both calculated with Equation 3. The values for ϵ_1 and ϵ_2 shown in the table are the percent RMS values of the errors.

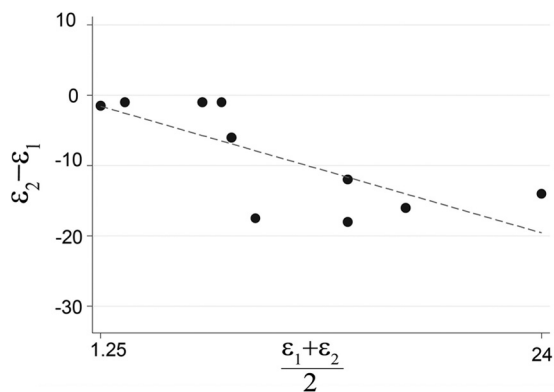


FIG 5. Bland-Altman plots of the WSS on BW for the T_0 versus T_2 and T_0 versus T_1 comparison, illustrating significantly higher error for the T_2 truncation compared with T_1 truncation for all 10 models.

P_1 . Here, the contours are visually similar between the T_0 and T_1 truncations, but slightly different (almost at the border of being different) for the T_0 and T_2 truncations. In addition, the scatterplot for the aneurysm bleb surface WSS magnitude for the T_0 to T_1 comparison (Fig 6, lower left) is spread along the 45° diagonal starting from the origin with an error RMS of approximately 17%. The scatterplot for the T_0 to T_2 comparison for WSS magnitudes on BW (Fig 6, lower right) is more spread out about the diagonal, with an error RMS value of 31%.

Another quantitative-qualitative analysis is presented in Fig 7, which shows the contour plots of OSI on BW for model P_5 and the scatterplot of OSI values for T_0 versus T_1 and T_0 versus T_2 comparisons. In this example, the contours are only borderline slightly different for the T_0 to T_1 comparison, which is also confirmed quantitatively by the tighter scatterplot of the T_0 versus T_1 comparison (lower left), with an error RMS of approximately 18%. However, the T_2 contour plot is visually different from the T_0 contour plot difference, which was more precisely quantified in the scatterplot (lower right), where the points are more widely spread out for higher OSI values with an error RMS value of approximately 54%. The large error RMS could be explained by the location of maximum OSI shifting from the area between the 2 aneurysm blebs in the T_0 truncation to an area near the common neck location of the 2 blebs in the T_2 truncation (shown with the arrows in Fig 7).

To find the numeric value of a visually observed meaningful

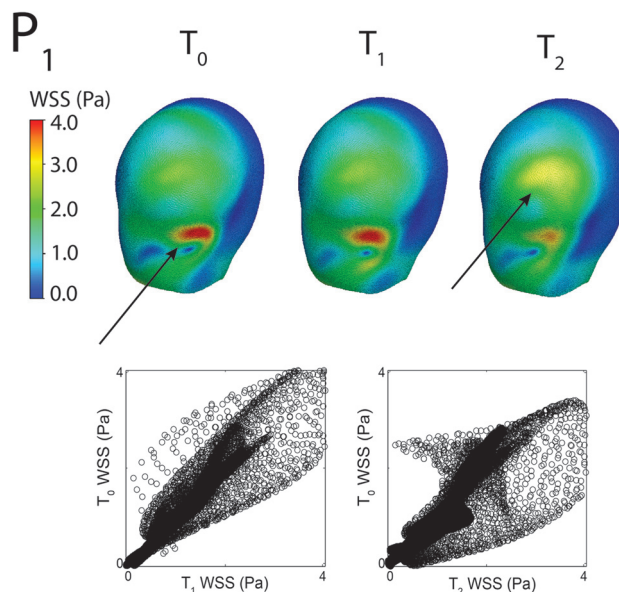


FIG 6. WSS magnitude contour plots for the 3 truncations (upper panel) and WSS magnitude scatterplots for the T_0 versus T_1 comparison and for the T_0 versus T_2 comparison, respectively (lower panels) for the model P_1 . The error RMSs defined by Equation 4 corresponding to the 2 scatterplots are 17% and 31%, respectively. The arrows indicate the locations where the area with maximum WSS values diminishes from truncation T_0 to truncation T_2 and a new area with a local maximum forms in truncation T_2 .

error for all 10 aneurysms, we compared the contour plot results with the error RMS defined in Equation 4, and we found that contour plots with a relative error RMS of <18% could be generally considered qualitatively similar, whereas those with a relative error RMS >32% were associated with qualitatively different contours. Errors between truncations with magnitudes between 18% and 32% were observed to lead to slightly different contours.

DISCUSSION

This is the first study to assess the quantitative differences in the intra-aneurysmal blood flow parameters when truncating the length of the main artery leading to the aneurysm bleb in models of ophthalmic aneurysms and to provide a meaningful error, by associating the quantitative analysis with the qualitative description of hemodynamics results. Usually, visual observations are the standard

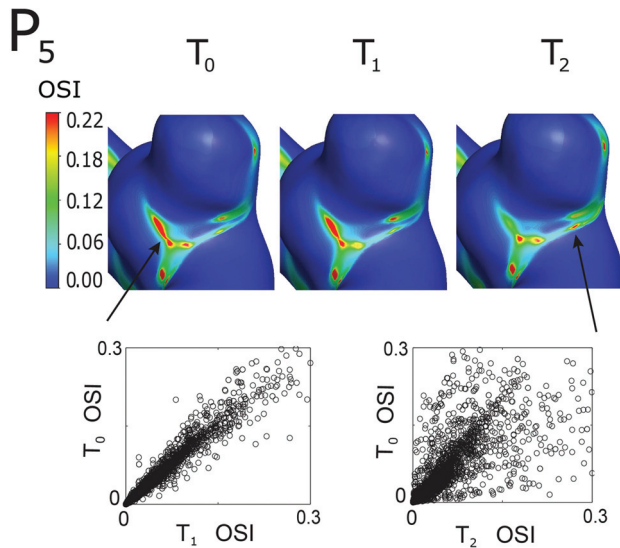


FIG 7. OSI magnitude contour plots on the aneurysm bleb surface for the 3 truncations (upper panels) and OSI magnitude scatterplots on the aneurysm bleb (lower panels). The error RMS defined by Equation 4 corresponding to the 2 scatterplots are 18% and 54%, respectively. The arrow on the T_0 contour plot indicates the location of the maximum OSI values, which shifts from the area between the 2 aneurysm blebs in the T_0 truncation to an area near the common neck location of the 2 blebs in the T_2 truncation.

way to compare the CFD results between models, which can potentially obscure important quantitative differences. To estimate the effect of the arterial length on the flow behavior in the aneurysm bleb, we analyzed the main flow parameters for 10 models, each with 3 truncations: the original maximum length obtained from the patient medical images and 2 user-defined truncations obtained by cutting the ICA artery after each of 2 major turns.

Qualitatively, the visual differences were observed to be small for most of the models when the ICA artery was truncated at the cavernous site (T_1 truncations). As such, a simple comparison of the contour plots with our quantitative results showed that the contours could be visually similar for the T_0 to T_1 comparison, but quantitatively, the average errors could still be relatively large, for example 17% different for WSS in P_1 (Fig 6). Because the quantitative differences account for both the location and the magnitude of the hemodynamic parameter investigated, a shifting location of the maximum value on the contour map can be much better assessed with a quantitative description of errors, but it can be sometimes misjudged by visual observation.

When the qualitative differences in the contour plots were compared with the quantitative errors presented in the Table, we observed that errors of less than approximately 18% resulted in visually similar contours for 8 models for the T_0 to T_1 comparisons. In contrast, for the T_0 to T_2 comparisons, larger errors were observed for 8 of the 10 models, which resulted in slightly different or different contour plots of the hemodynamic parameters.

In summary, we found that a short arterial truncation, such as T_2 , at the clinoid segment could generate large quantitative errors and qualitative differences. However, an inlet artery starting at the cavernous segment, as in the T_1 truncation, seems to produce qualitatively similar flow behavior, but even for this more modest truncation, the quantitative errors can be too large compared with the flow parameters analyzed for the original model, T_0 .

CONCLUSIONS

When one assesses the accuracy of a computational model for patient-specific aneurysms, quantitative analysis of the hemodynamic parameters must be considered along with visual analysis of the graphic representation of flow quantities. The present study showed that excluding 2 arterial turns from the artery resulted, most of the time, in large quantitative differences of the hemodynamics parameters inside the ophthalmic aneurysm blebs, which could lead to erroneous conclusions if used clinically.

Disclosures: David F. Kallmes—UNRELATED: Board Membership: GE Healthcare, Comments: Cost Effectiveness Board; Consultancy: ev3, Medtronic, Comments: planning and implementation of clinical trials; Grants/Grants Pending: ev3,* Sequent,* Surmodics,* Codman,* MicroVenting*; Royalties: University of Virginia Patent Foundation (Spine Fusion). *Money paid to the institution.

REFERENCES

- Cebral JR, Castro MA, Appanaboyina S, et al. Efficient pipeline for image-based patient-specific analysis of cerebral aneurysm hemodynamics: technique and sensitivity. *IEEE Trans Med Imaging* 2005;24:457–67
- Harmonik C, Diaz O, Klucznik R, et al. Quantitative comparison of hemodynamic parameters from steady and transient CFD simulations in cerebral aneurysms with focus on the aneurysm ostium. *J Neurointerv Surg* 2014 April 10. [Epub ahead of print]
- Ernemann UU, Gronewaller E, Duffner FB, et al. Influence of geometric and hemodynamic parameters on aneurysm visualization during three-dimensional rotational angiography: an in vitro study. *AJNR Am J Neuroradiol* 2003;24:597–603
- Hoi Y, Woodward S, Kim M, et al. Validation of CFD simulations of cerebral aneurysms with implication of geometric variations. *J Biomech Eng* 2006;128:844–51
- Moore JA, Steinman DA, Ethier CR. Computational blood flow modelling: errors associated with reconstructing finite element models from magnetic resonance images. *J Biomech* 1998;31:179–84
- Cebral JR, Lohner R. Efficient simulation of blood flow past complex endovascular devices using an adaptive embedding technique. *IEEE Trans Med Imaging* 2005;24:468–76
- Hodis S, Uthamaraj S, Smith AL, et al. Grid convergence errors in hemodynamic solution of patient-specific cerebral aneurysms. *J Biomech* 2012;45:2907–13
- Naughton NM, Plourde BD, Stark JR, et al. Impacts of waveforms on the fluid flow, wall shear stress, and flow distribution in cerebral aneurysms and the development of a universal reduced pressure. *J Biomed Sci Eng* 2014;71002:7–14
- Moyle KR, Antiga L, Steinman DA. Inlet conditions for image-based CFD models of the carotid bifurcation: is it reasonable to assume fully developed flow? *J Biomech Eng* 2006;128:371–79
- Hodis S, Kallmes DF, Dragomir-Daescu D. Adaptive grid generation in a patient-specific cerebral aneurysm. *Phys Rev E Stat Nonlin Soft Matter Phys* 2013;88:052720
- Womersley JR. Oscillatory flow in arteries: the constrained elastic tube as a model of arterial flow and pulse transmission. *Phys Med Biol* 1957;2:178–87
- Zamir M. *The Physics of Coronary Blood Flow*. New York: Springer-Verlag; 2005
- Hodis S, Uthamaraj S, Lanzino G, et al. Computational fluid dynamics simulation of an anterior communicating artery ruptured during angiography. *J Neurointerv Surg* 2014;6:e14
- Hodis S, Zamir M. Pulse wave velocity as a diagnostic index: the pitfalls of tethering versus stiffening of the arterial wall. *J Biomech* 2011;44:1367–73
- Hodis S, Zamir M. Mechanical events within the arterial wall under the forces of pulsatile flow: a review. *J Mech Behav Biomed Mater* 2011;4:1595–602

16. Versteeg H, Malalaseker W. *An Introduction to Computational Fluid Dynamics: The Finite Volume Method*. London: Pearson PLC; 2007
17. Shojima M, Oshima M, Takagi K, et al. **Magnitude and role of wall shear stress on cerebral aneurysm: computational fluid dynamic study of 20 middle cerebral artery aneurysms**. *Stroke* 2004;35:2500–05
18. Valen-Sendstad K, Steinman DA. **Mind the gap: impact of computational fluid dynamics solution strategy on prediction of intracranial aneurysm hemodynamics and rupture status indicators**. *AJNR Am J Neuroradiol* 2014;35:536–43
19. Cebral JR, Putman CM, Alley MT, et al. **Hemodynamics in normal cerebral arteries: qualitative comparison of 4D phase-contrast magnetic resonance and image-based computational fluid dynamics**. *J Eng Math* 2009;64:367–78
20. Ku DN, Giddens DP, Zarins CK, et al. **Pulsatile flow and atherosclerosis in the human carotid bifurcation: positive correlation between plaque location and low oscillating shear stress**. *Arteriosclerosis* 1985;5:293–302
21. Nordgaard H, Swillens A, Nordhaug D, et al. **Impact of competitive flow on wall shear stress in coronary surgery: computational fluid dynamics of a LIMA-LAD model**. *Cardiovasc Res* 2010;88: 512–19
22. Cebral JR, Raschi M. **Suggested connections between risk factors of intracranial aneurysms: a review**. *Ann Biomed Eng* 2013;41:1366–83
23. Van Houten EE, Viviers D, McGarry MD, et al. **Subzone based magnetic resonance elastography using a Rayleigh damped material model**. *Med Phys* 2011;38:1993–2004